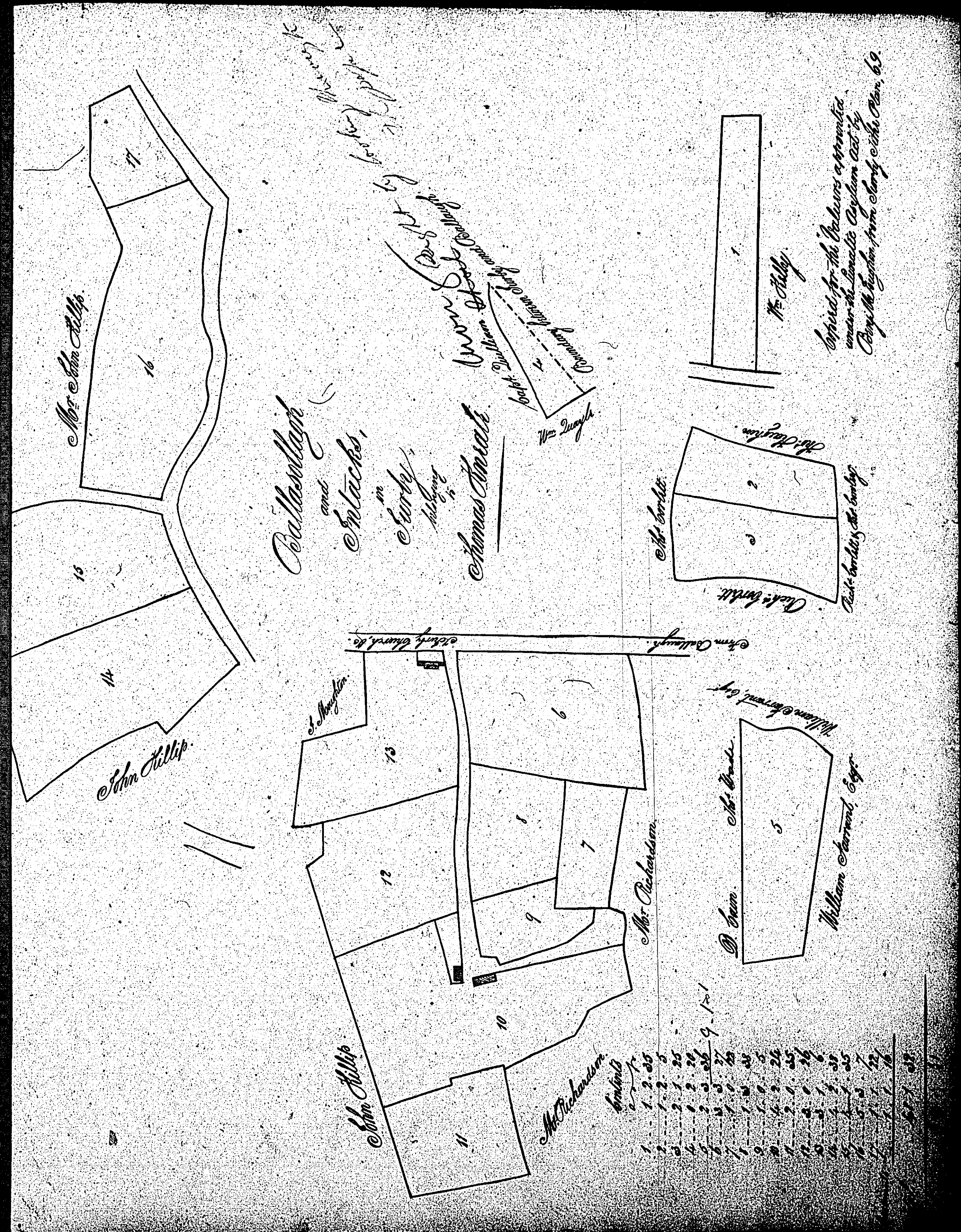


ISLE OF MAN GOVERNMENT: GENERAL REGISTRY

ASYLUM PLANS: PARISH OF JURBY

Original monotone

1:23

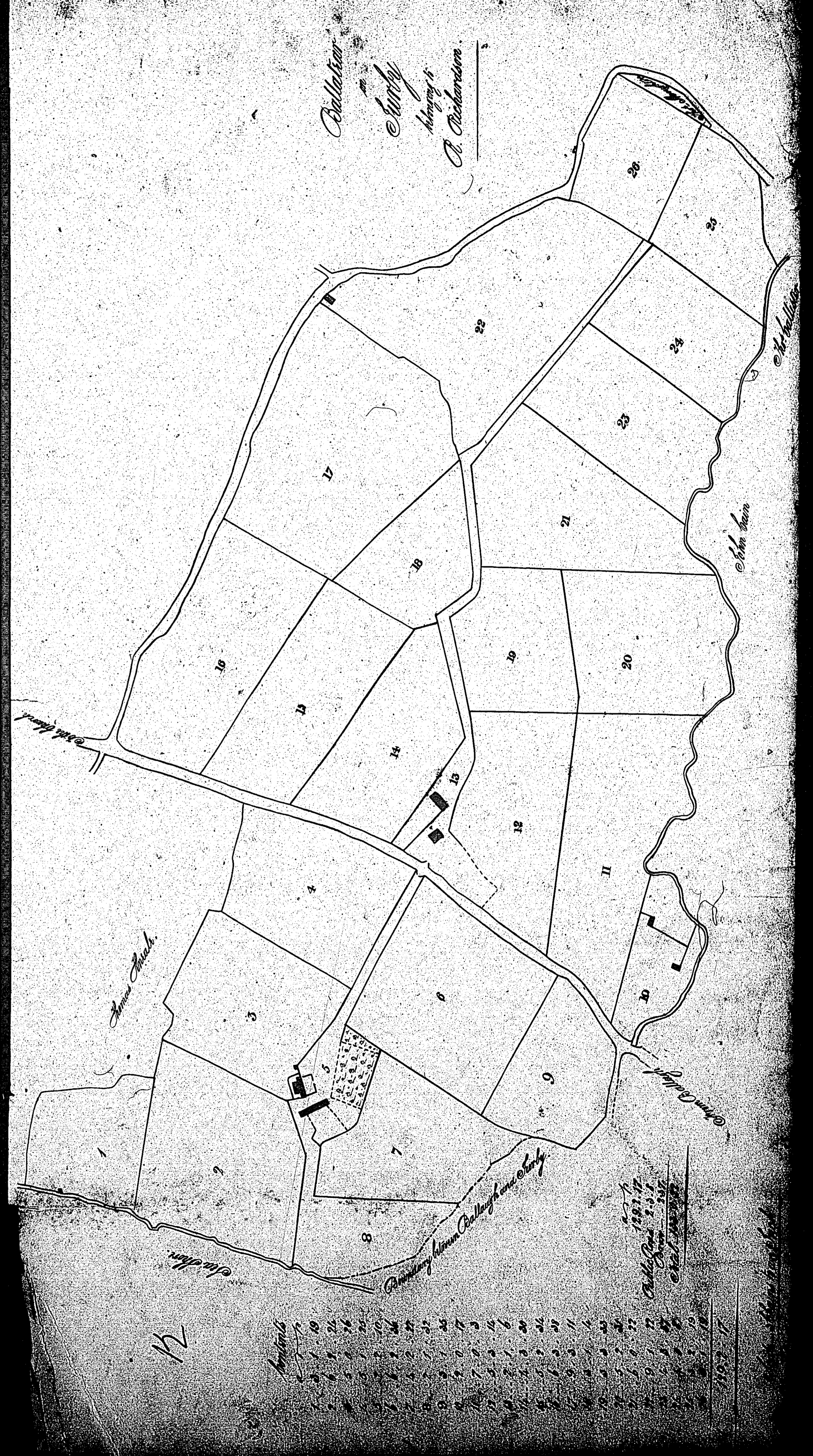


ISLE OF MAN GOVERNMENT: GENERAL REGISTRY

ASYLUM PLANS: PARISH OF JURBY

Original monotone

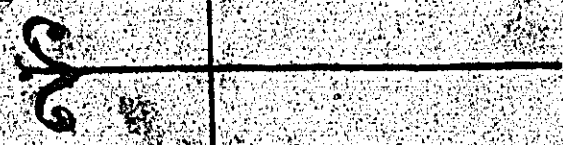
1:23



A Plan and Survey  
 of  
 Ballacaire Farm  
 in the Parish of  
 Jurby  
 the property of  
 Lewis D. Caine

taken 1841  
 by John Caine Esq  
 this the 14<sup>th</sup> of January 1842

13



A.R.P. 7 1/2  
 Fields 17th B. 7 1/2  
 Plantation 18th B. 1 1/2  
 Woods 19th B. 1 1/2  
 1830 - 0 - 2794

John Caine to L. Caine

ISLE OF MAN GOVERNMENT: GENERAL REGISTRY

ASYLUM PLANS: PARISH OF JURBY

Original monotone

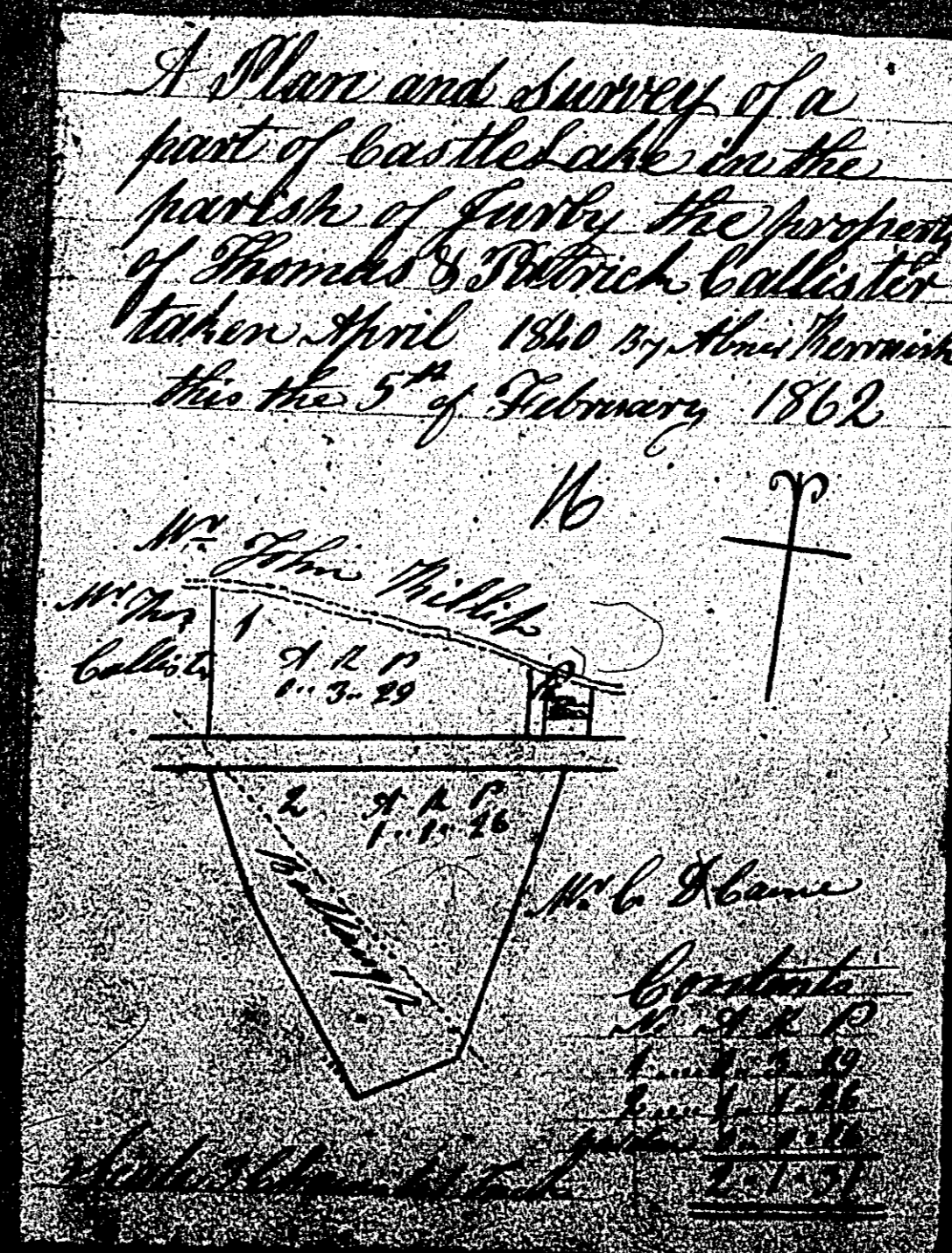
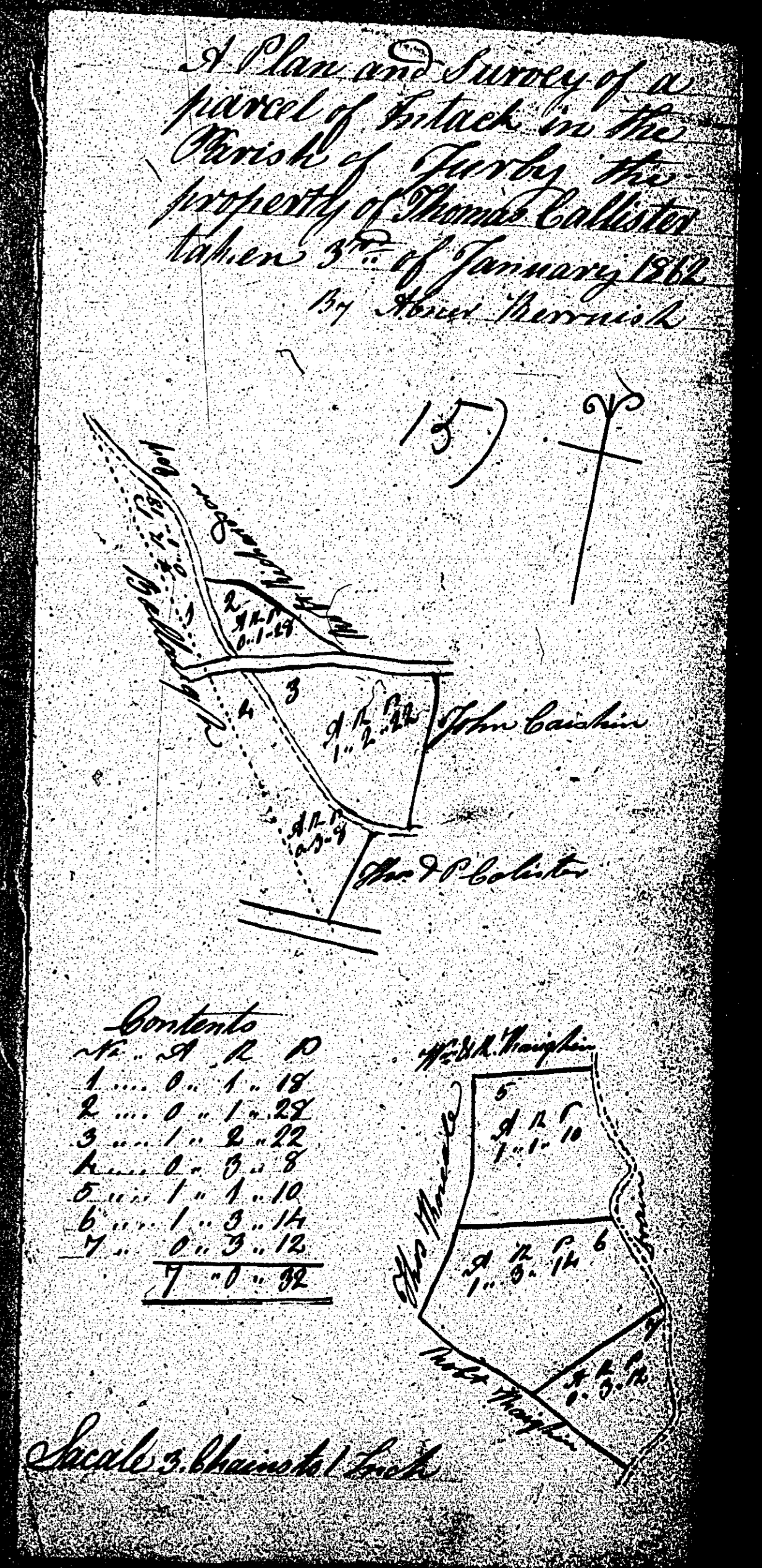
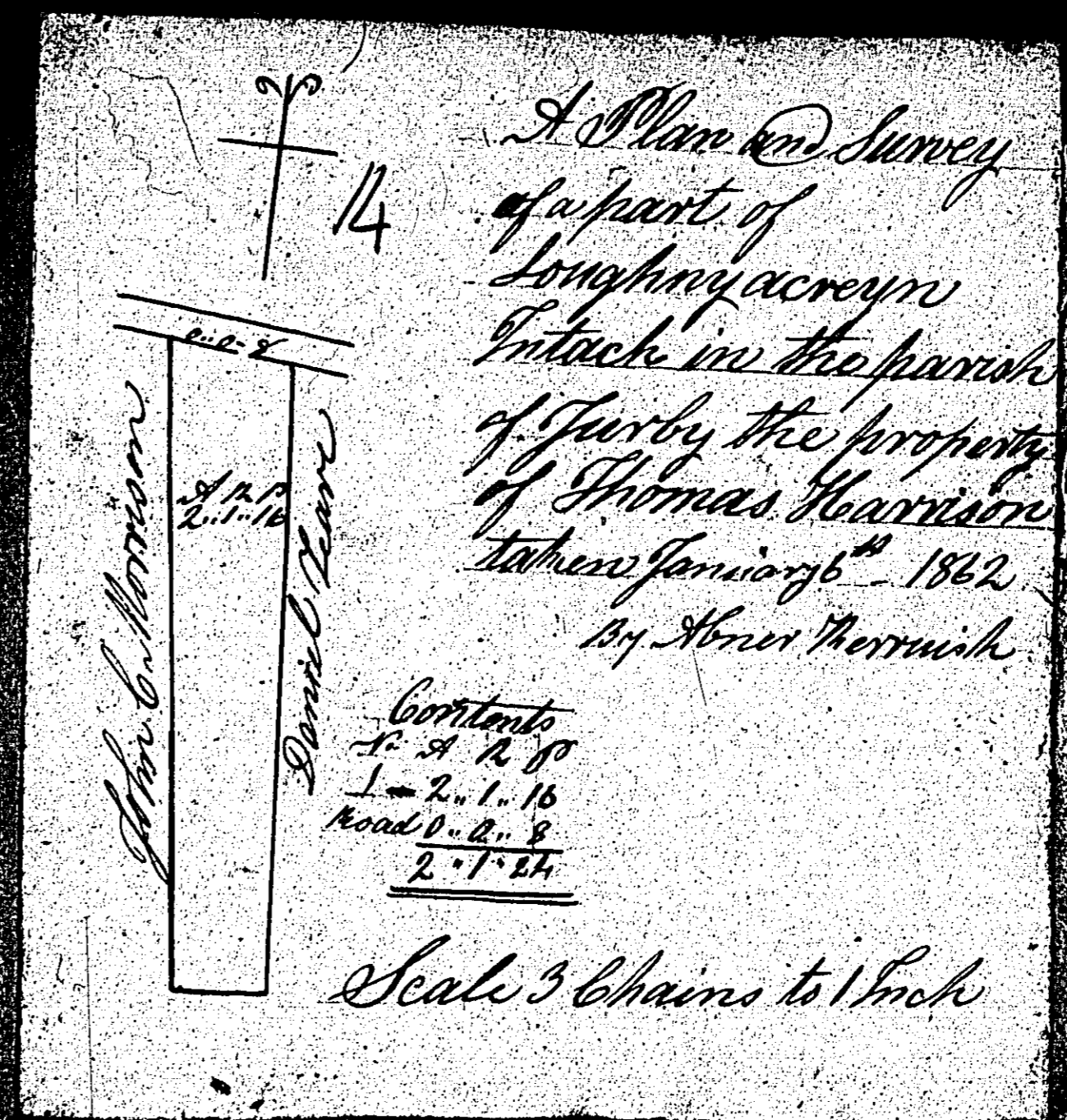
1:23

ISLE OF MAN GOVERNMENT: GENERAL REGISTRY

ASYLUM PLANS: PARISH OF JURBY

Originals monotone

1:23

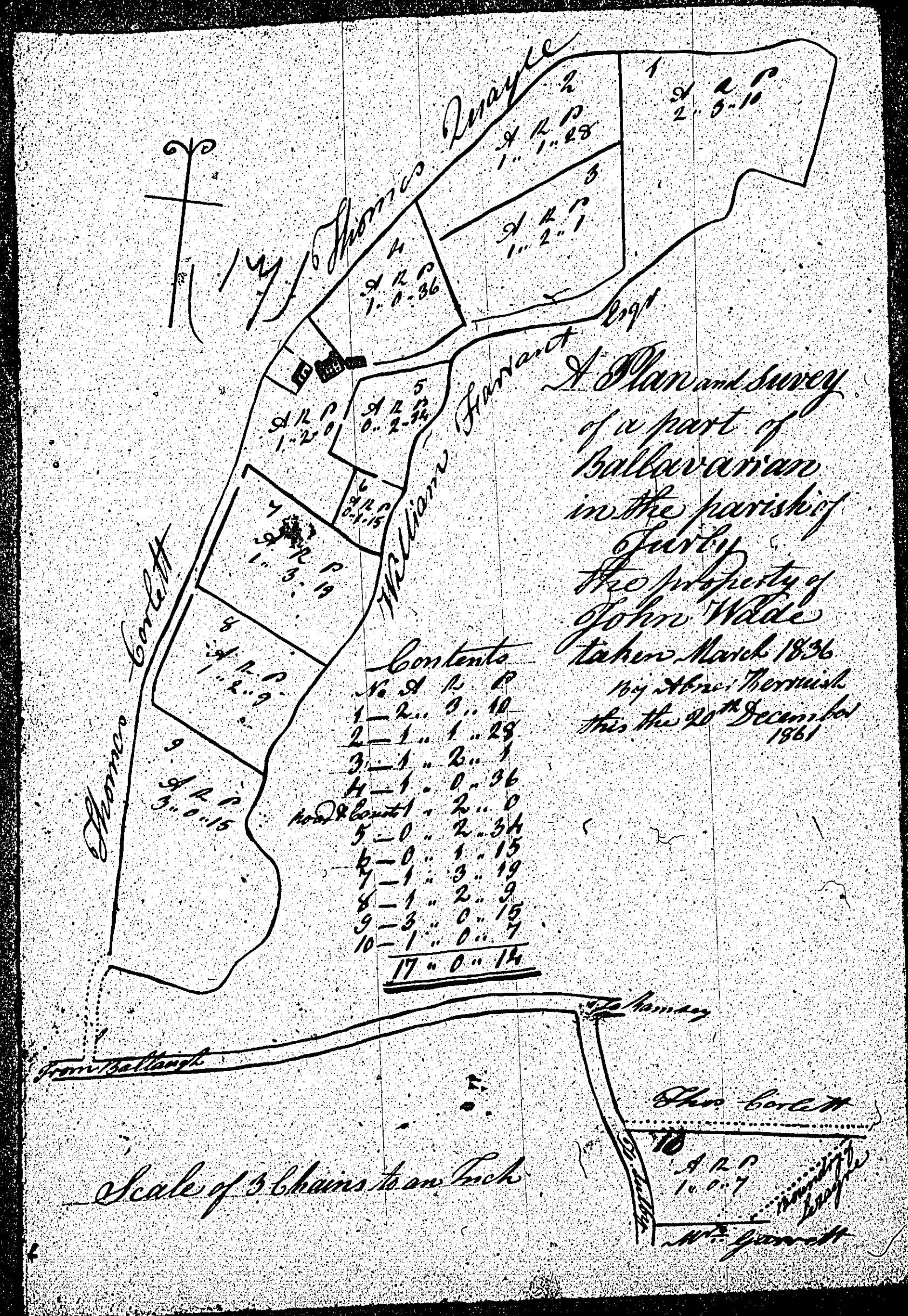


ISLE OF MAN GOVERNMENT: GENERAL REGISTRY

ASYLUM PLANS: PARISH OF JURBY

Original monotone

1:23



The following two  
plans are both  
numbered

18