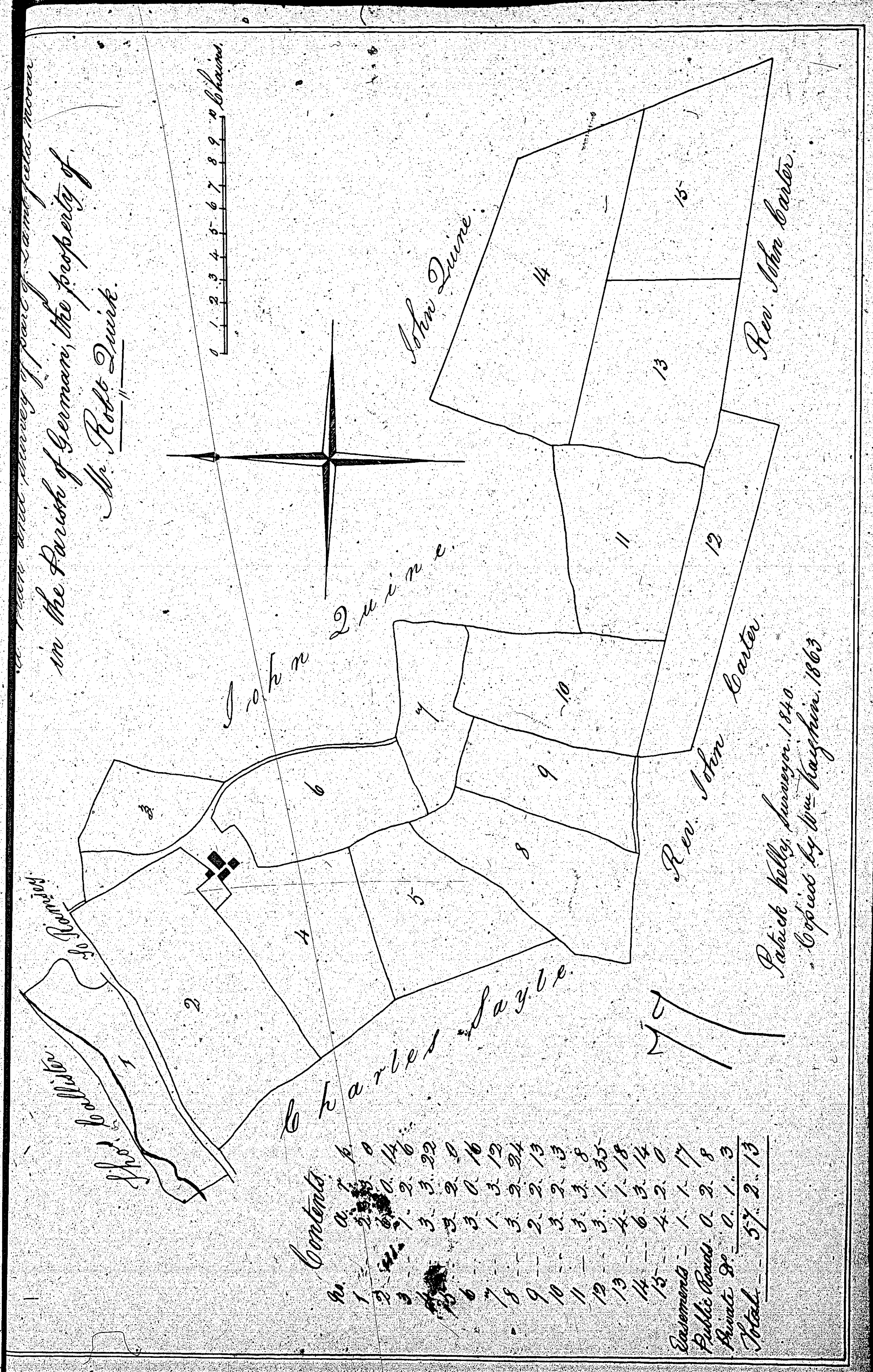


ISLE OF MAN GOVERNMENT: GENERAL REGISTRY

ASYLUM PLANS: PARISH OF GERMAN

Original coloured

1:23

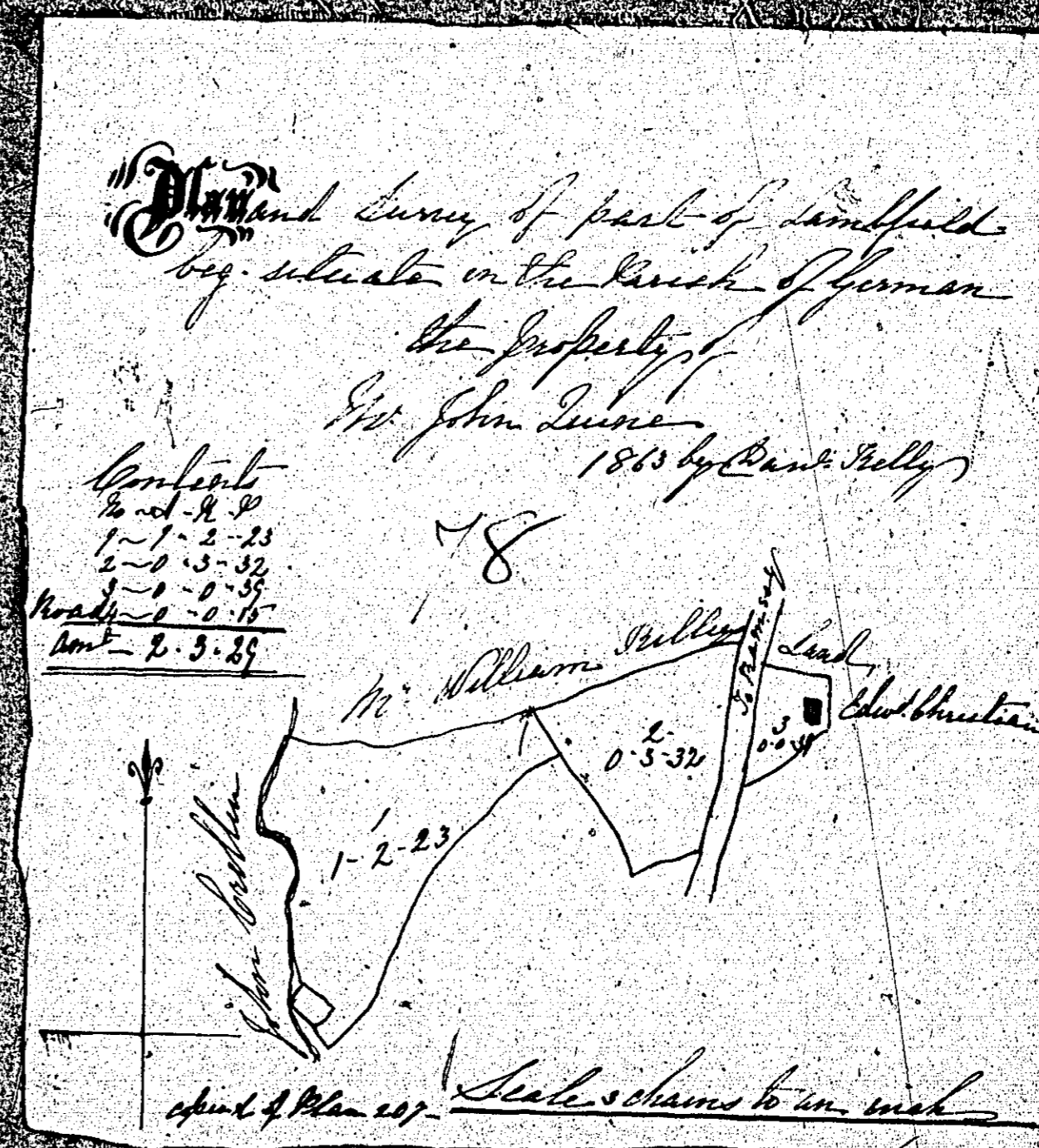


ISLE OF MAN GOVERNMENT: GENERAL REGISTRY

ASYLUM PLANS: PARISH OF GERMAN

Original monotone

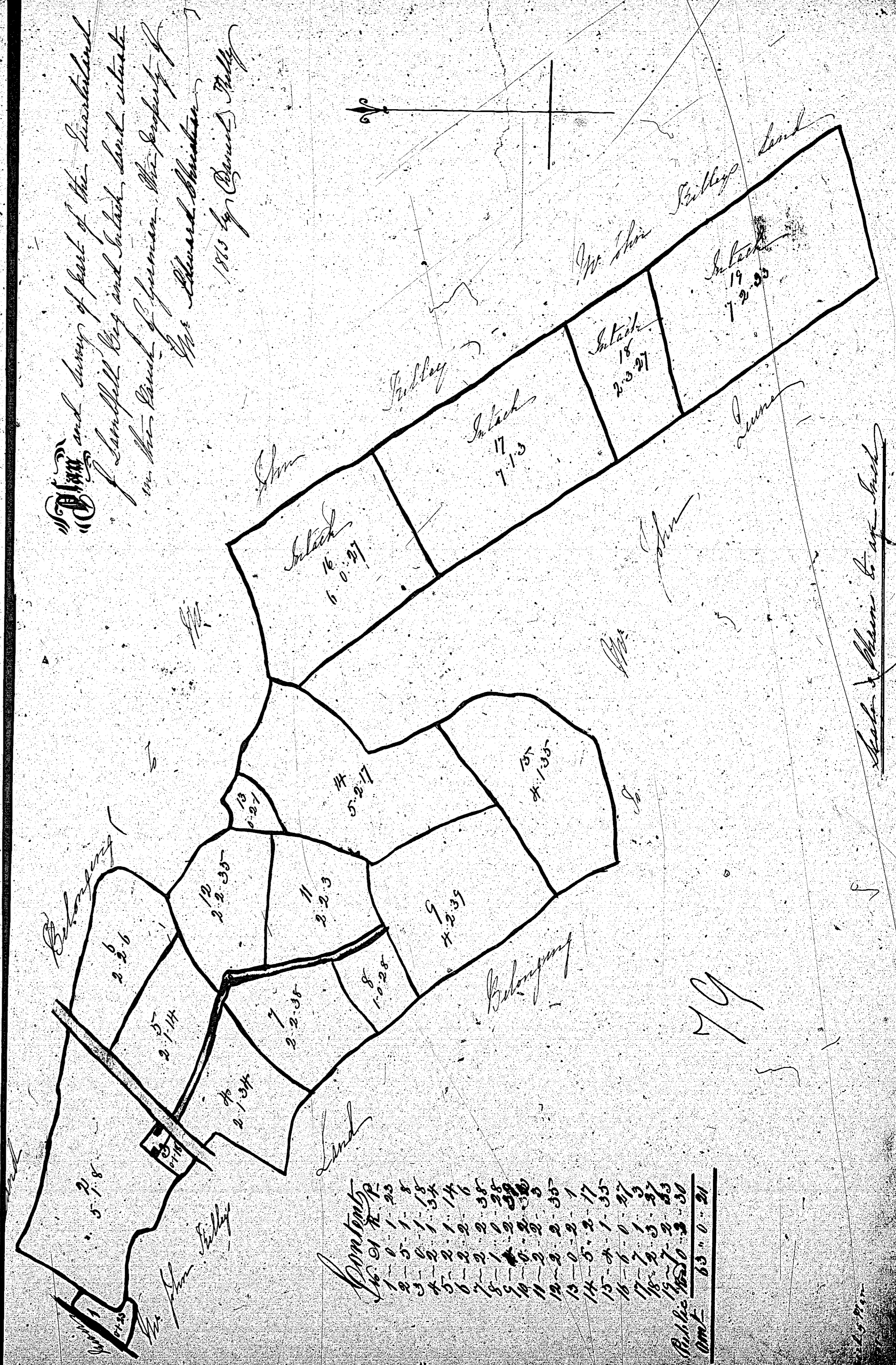
1:23



ISLE OF MAN GOVERNMENT: GENERAL REGISTRY
 ASYLUM PLANS: PARISH OF GERMAN

Original coloured

1:23

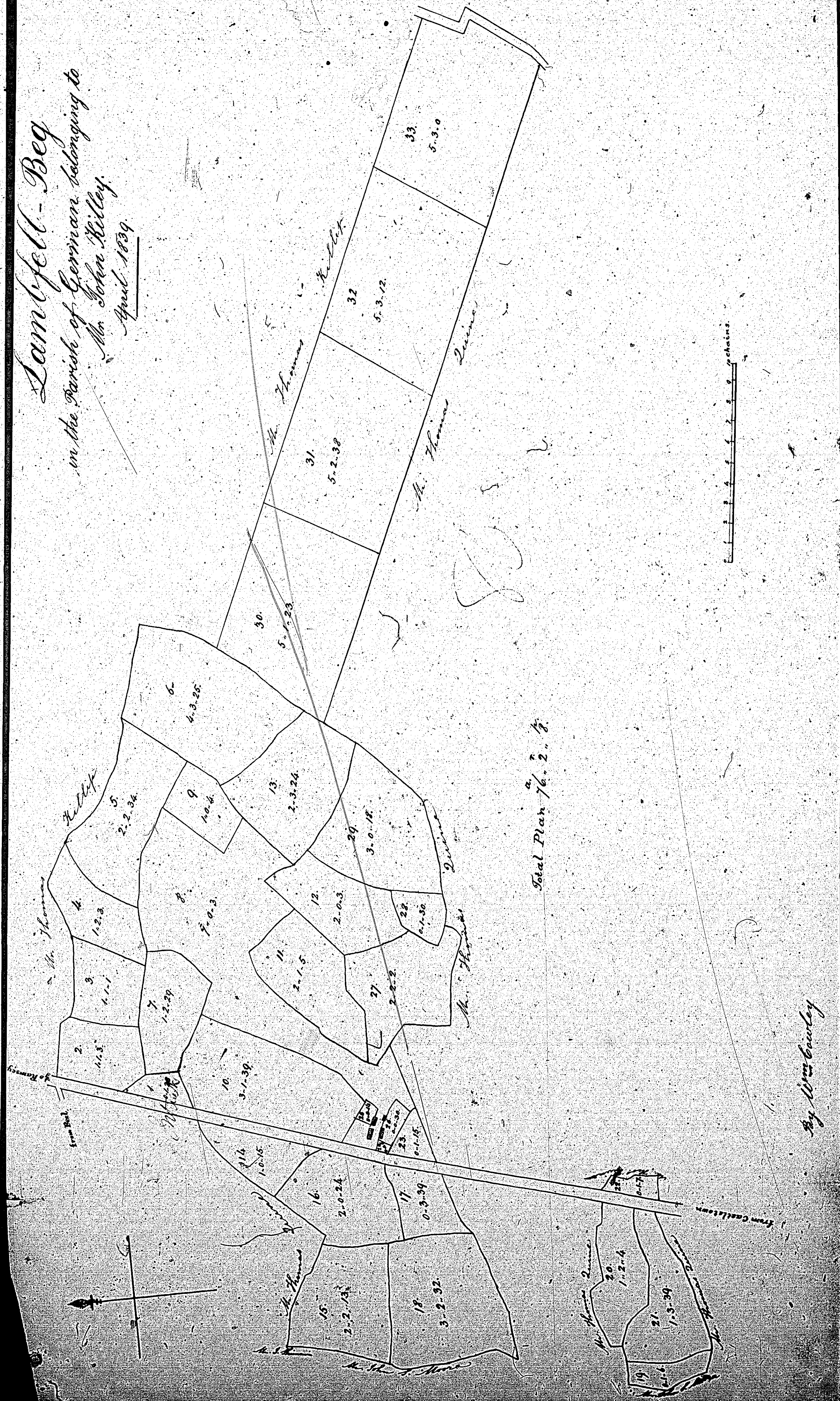


ISLE OF MAN GOVERNMENT: GENERAL REGISTRY

ASYLUM PLANS: PARISH OF GERMAN

Original monotone

1:23



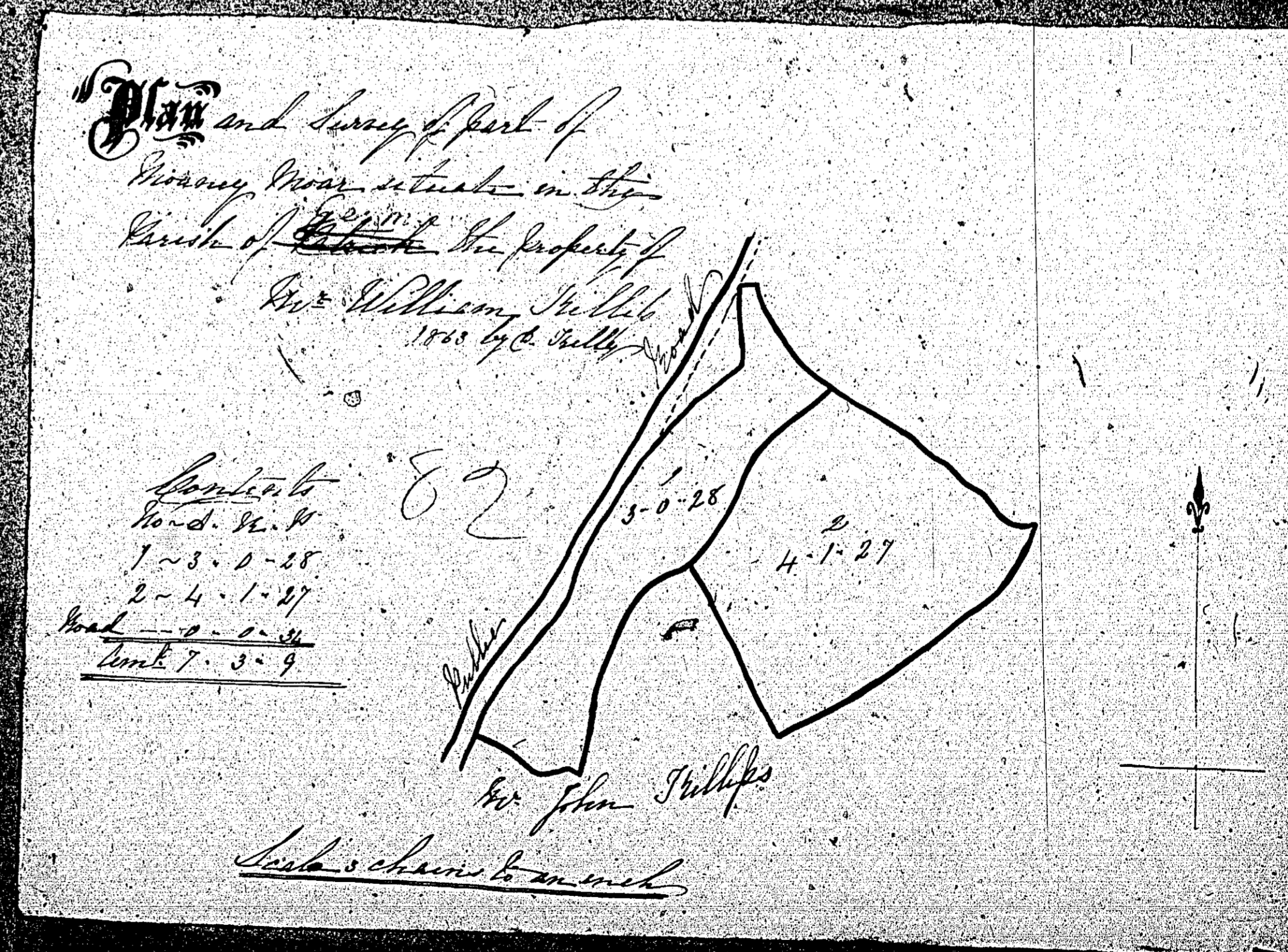
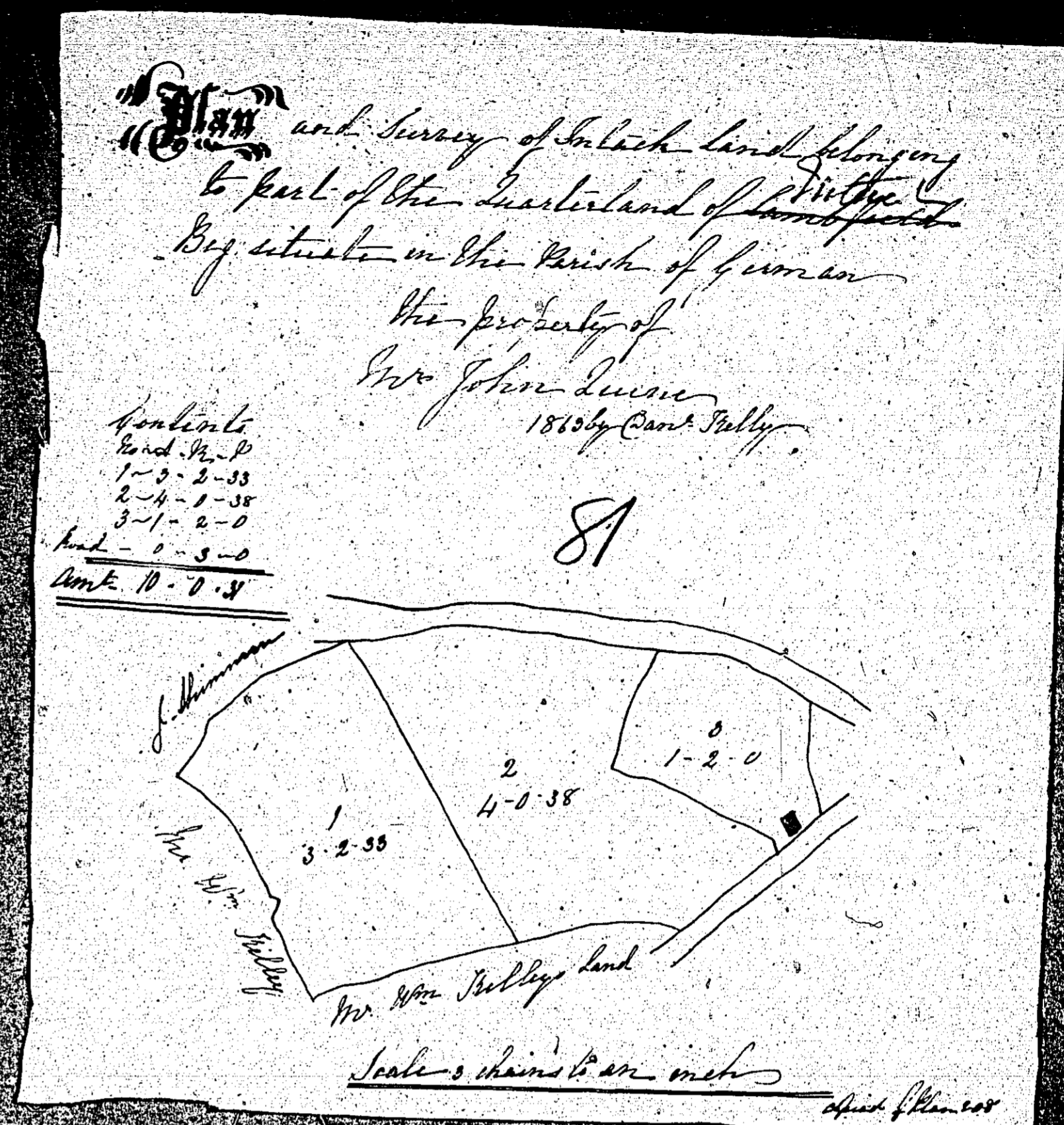
ISLE OF MAN GOVERNMENT: GENERAL REGISTRY

ASYLUM PLANS: PARISH OF GERMAN

81 Original monotone

82 Original coloured (decorative)

1:23

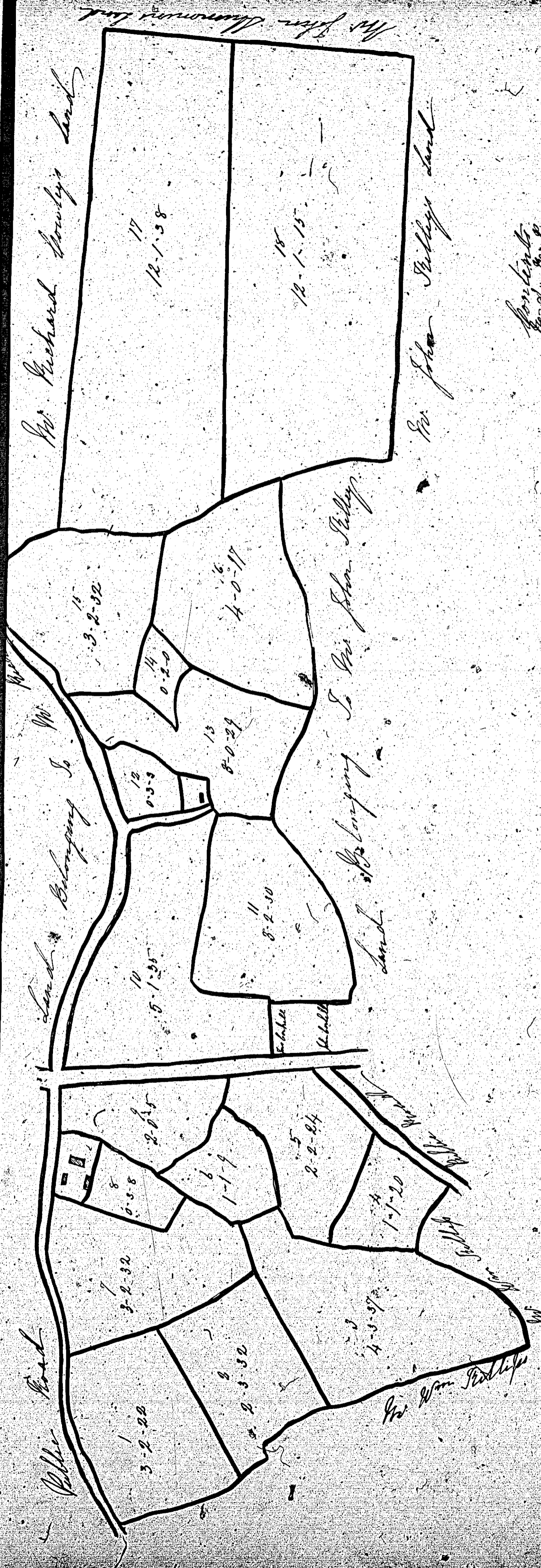


ISLE OF MAN GOVERNMENT: GENERAL REGISTRY

ASYLUM PLANS: PARISH OF GERMAN

Original coloured (decorative)

1:23



Plot No.	Area
1	0.0.0
2	0.0.0
3	0.0.0
4	0.0.0
5	0.0.0
6	0.0.0
7	0.0.0
8	0.0.0
9	0.0.0
10	0.0.0
11	0.0.0
12	0.0.0
13	0.0.0
14	0.0.0
15	0.0.0
16	0.0.0
17	0.0.0
18	0.0.0
19	0.0.0
20	0.0.0
21	0.0.0
22	0.0.0
23	0.0.0
24	0.0.0
25	0.0.0
26	0.0.0
27	0.0.0
28	0.0.0
29	0.0.0
30	0.0.0
31	0.0.0
32	0.0.0
33	0.0.0
34	0.0.0
35	0.0.0
36	0.0.0
37	0.0.0
38	0.0.0
39	0.0.0
40	0.0.0
41	0.0.0
42	0.0.0
43	0.0.0
44	0.0.0
45	0.0.0
46	0.0.0
47	0.0.0
48	0.0.0
49	0.0.0
50	0.0.0
51	0.0.0
52	0.0.0
53	0.0.0
54	0.0.0
55	0.0.0
56	0.0.0
57	0.0.0
58	0.0.0
59	0.0.0
60	0.0.0
61	0.0.0
62	0.0.0
63	0.0.0
64	0.0.0
65	0.0.0
66	0.0.0
67	0.0.0
68	0.0.0
69	0.0.0
70	0.0.0
71	0.0.0
72	0.0.0
73	0.0.0
74	0.0.0
75	0.0.0
76	0.0.0
77	0.0.0
78	0.0.0
79	0.0.0
80	0.0.0
81	0.0.0
82	0.0.0
83	0.0.0
84	0.0.0
85	0.0.0
86	0.0.0
87	0.0.0
88	0.0.0
89	0.0.0
90	0.0.0
91	0.0.0
92	0.0.0
93	0.0.0
94	0.0.0
95	0.0.0
96	0.0.0
97	0.0.0
98	0.0.0
99	0.0.0
100	0.0.0

Part and survey of part of the landward of Manx Moor, situated in the Parish of German, the property of Mr. John Parry, 1813 by James Parry

83

John Parry to an end

1813