

ISLE OF MAN GOVERNMENT: GENERAL REGISTRY

ASYLUM PLANS: PARISH OF BALLAUGH

Original coloured

1:23

frame 2 of 2

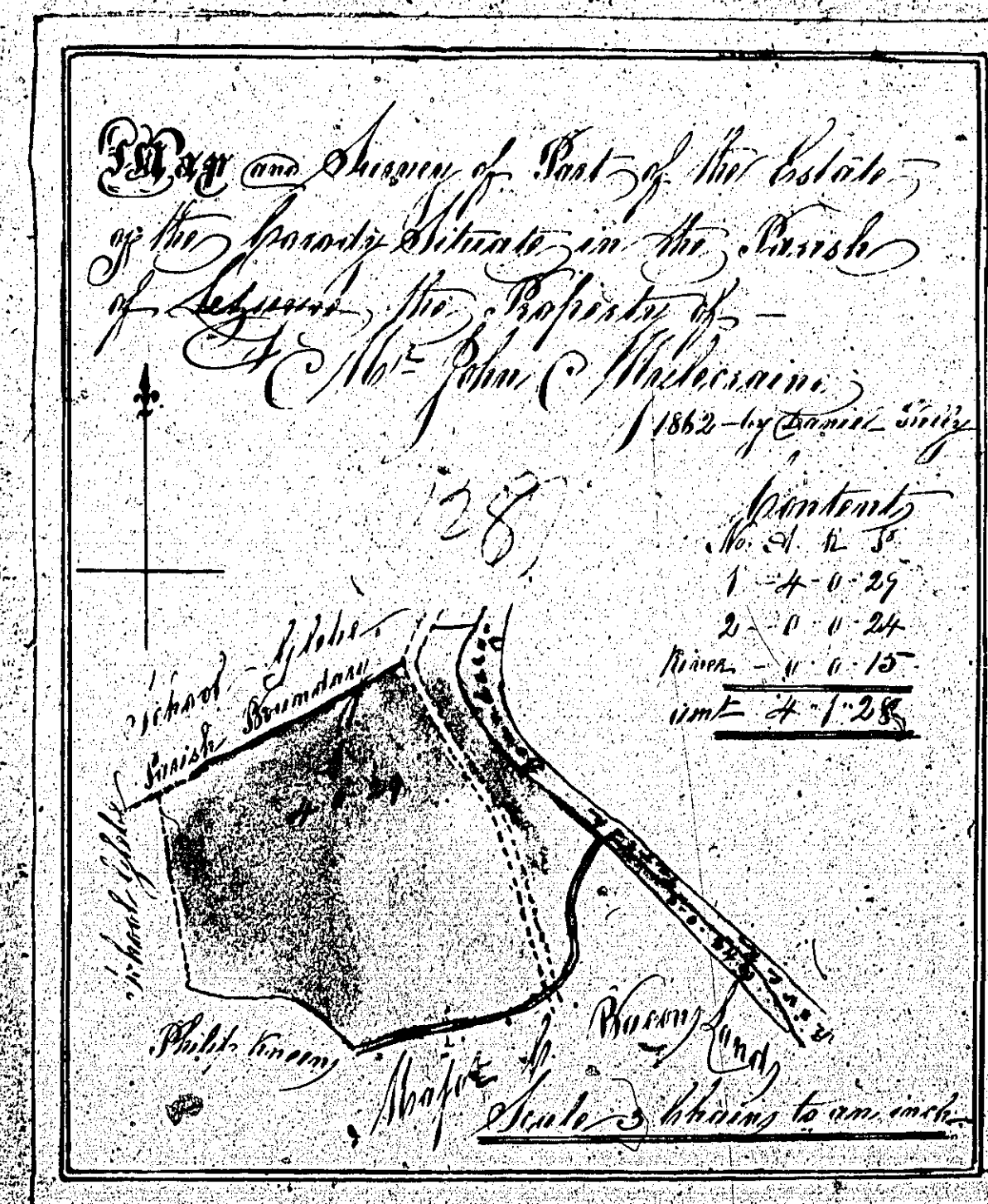
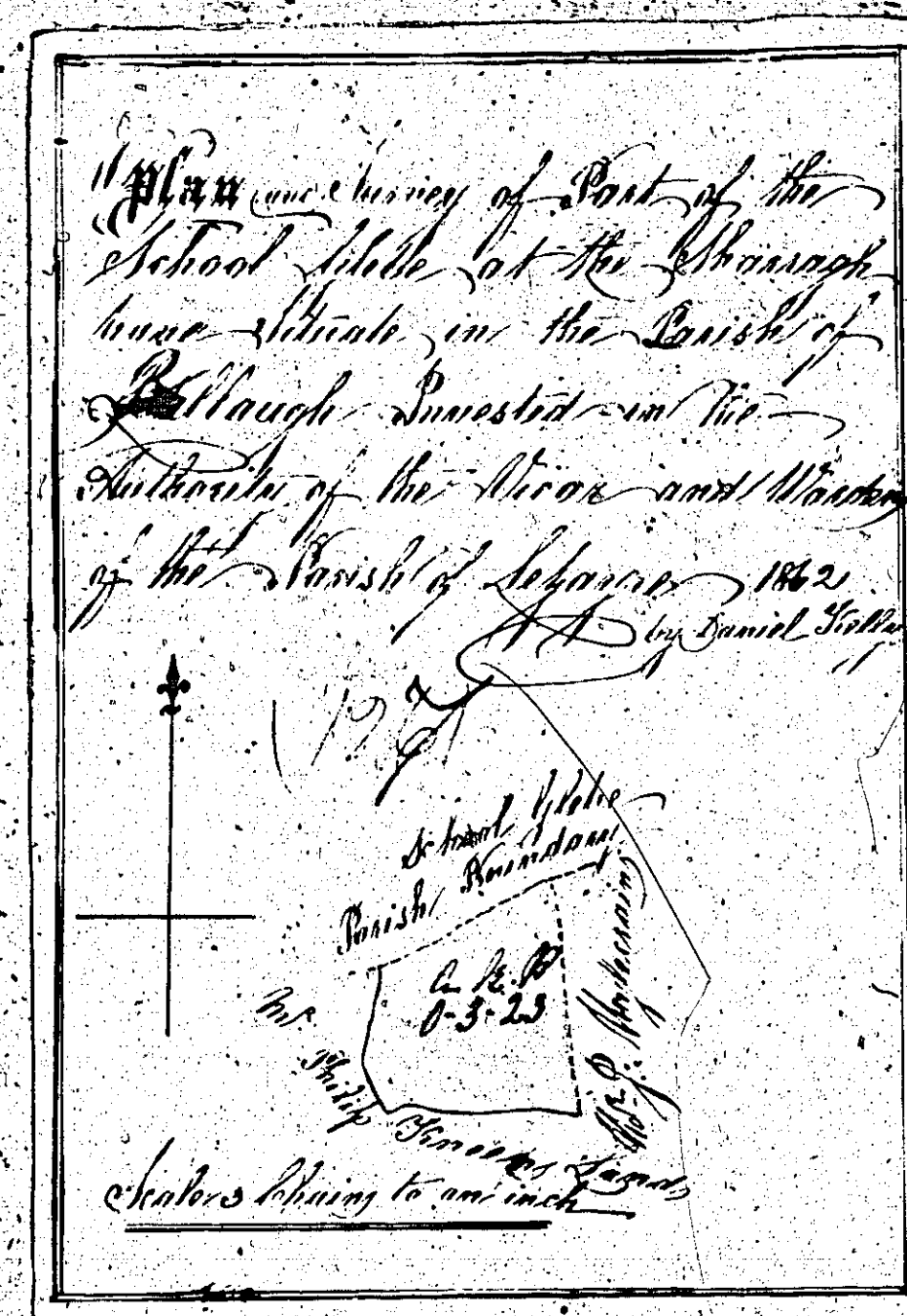


ISLE OF MAN GOVERNMENT: GENERAL REGISTRY

ASYLUM PLANS: PARISH OF BALLAUGH

Originals coloured (decorative)

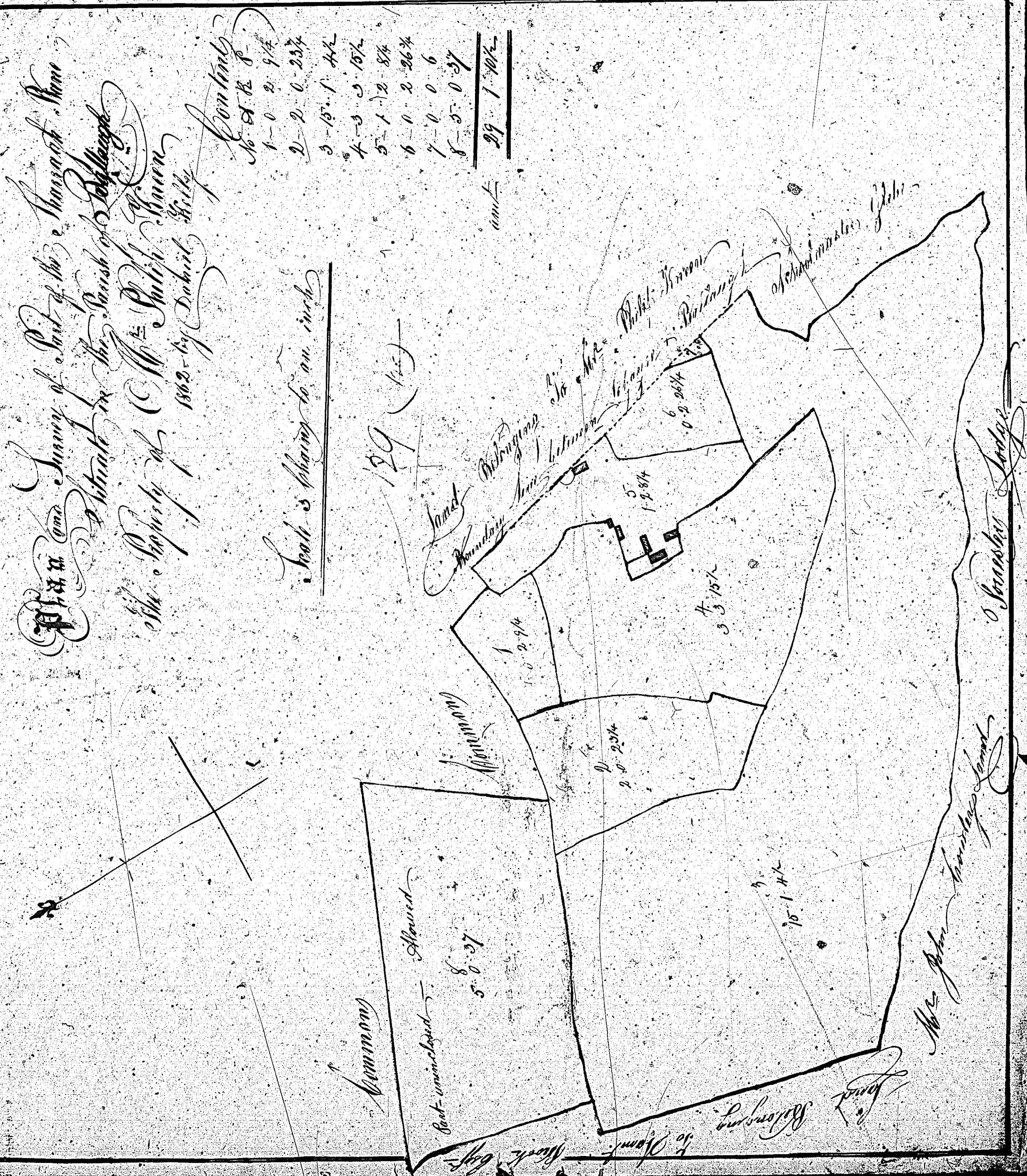
1:23



ISLE OF MAN GOVERNMENT: GENERAL REGISTRY
ASYLUM PLANS: PARISH OF BALLAUGH

Original coloured

1:23

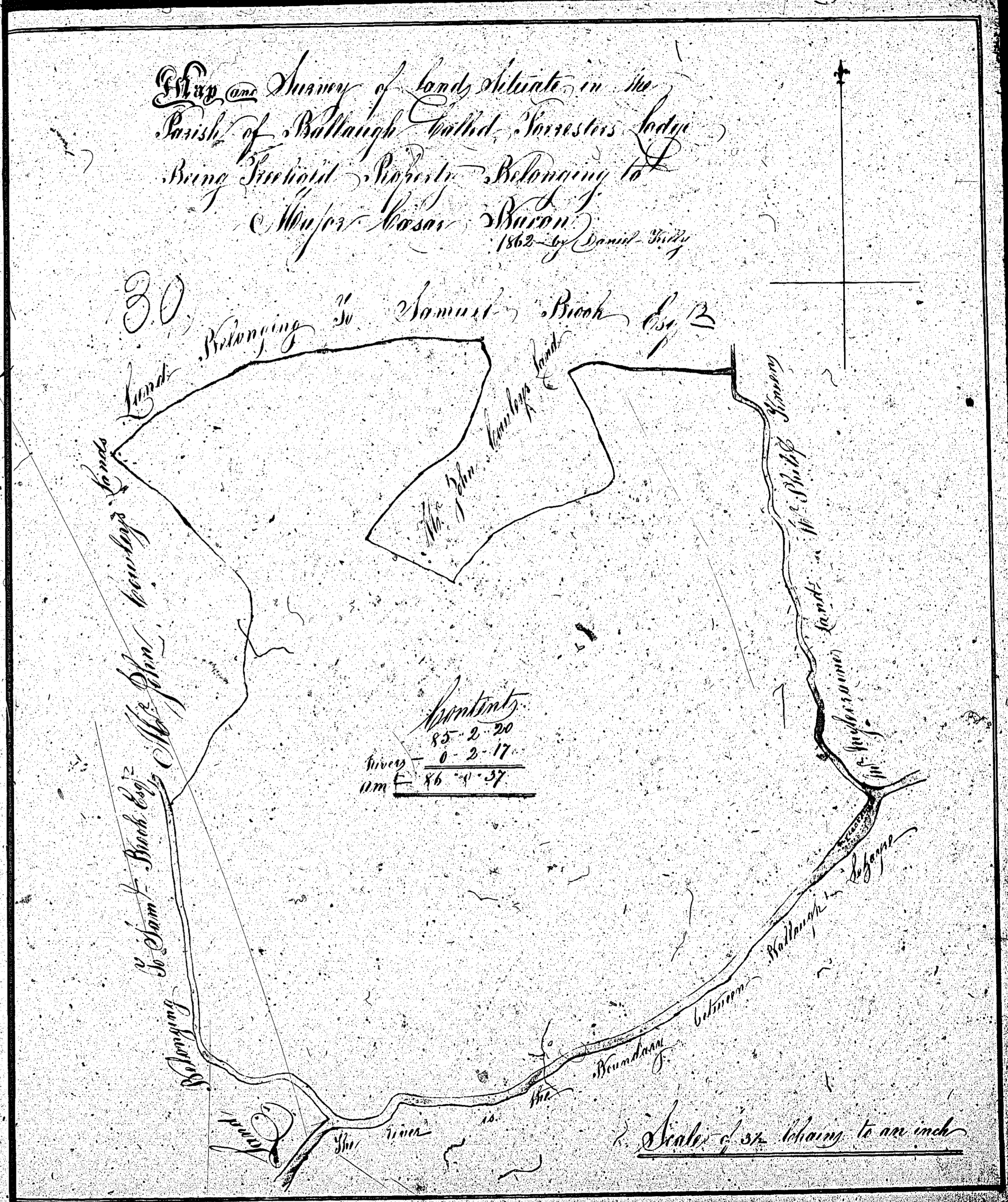


ISLE OF MAN GOVERNMENT: GENERAL REGISTRY

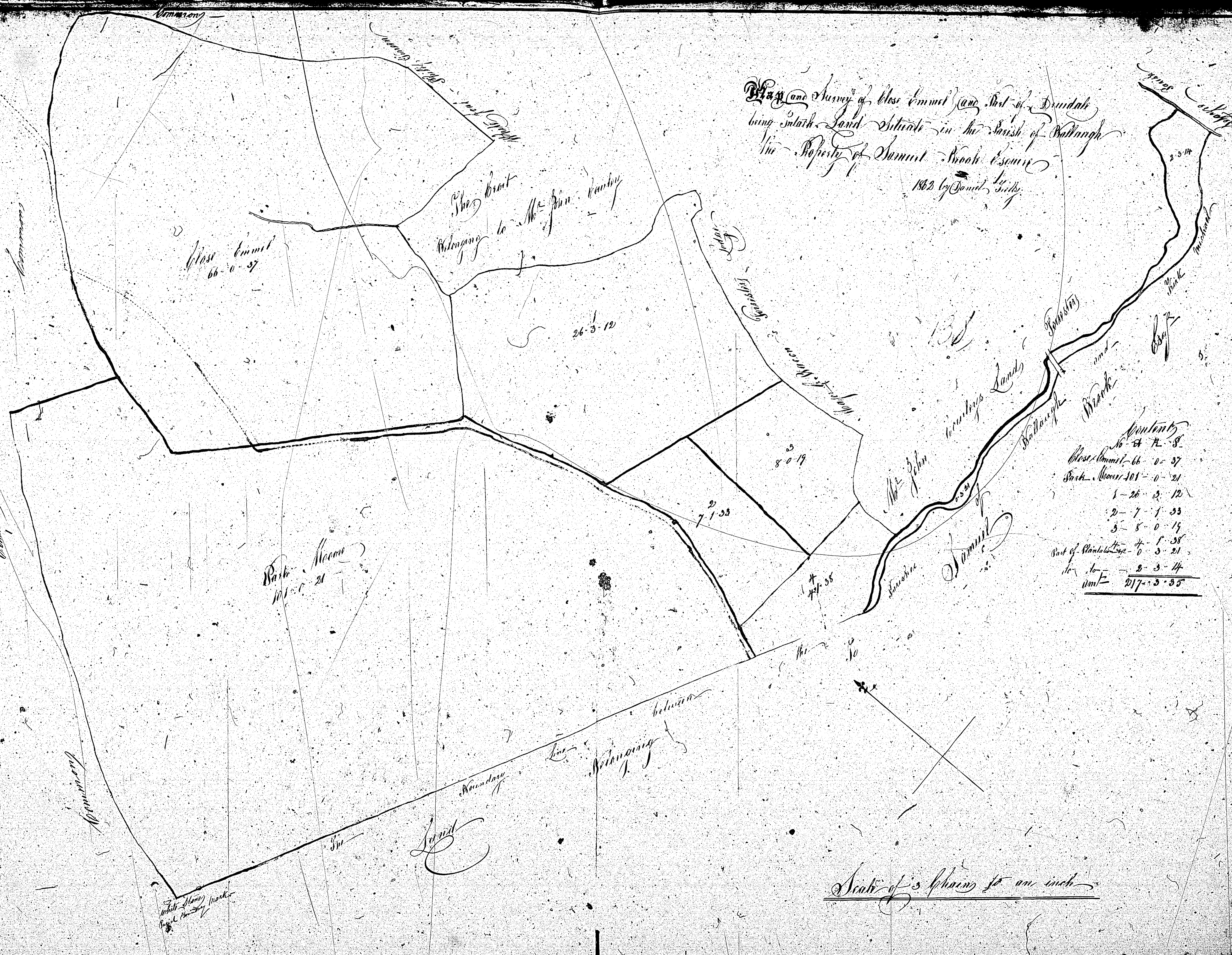
ASYLUM PLANS: PARISH OF BALLAUGH

Original coloured

1:23



Plan and Survey of those Emmet (and Part of) Daidale
 being Inland Land Situate in the Parish of Ballaugh
 the Property of Samuel Crooke Esquire
 1862 by David Sills.



Acreage	
16-4-8	8
Emmet-66-0-37	37
Part of Moor-101-0-21	21
1-26-3-12	12
2-7-1-33	33
3-8-0-14	14
Part of Rink-4-5-38	38
do do-2-3-14	14
Sum	217-3-35

ISLE OF MAN GOVERNMENT: GENERAL REGISTRY
 ASYLUM PLANS: PARISH OF BALLAUGH

Original coloured

1:23

END OF VOLUME