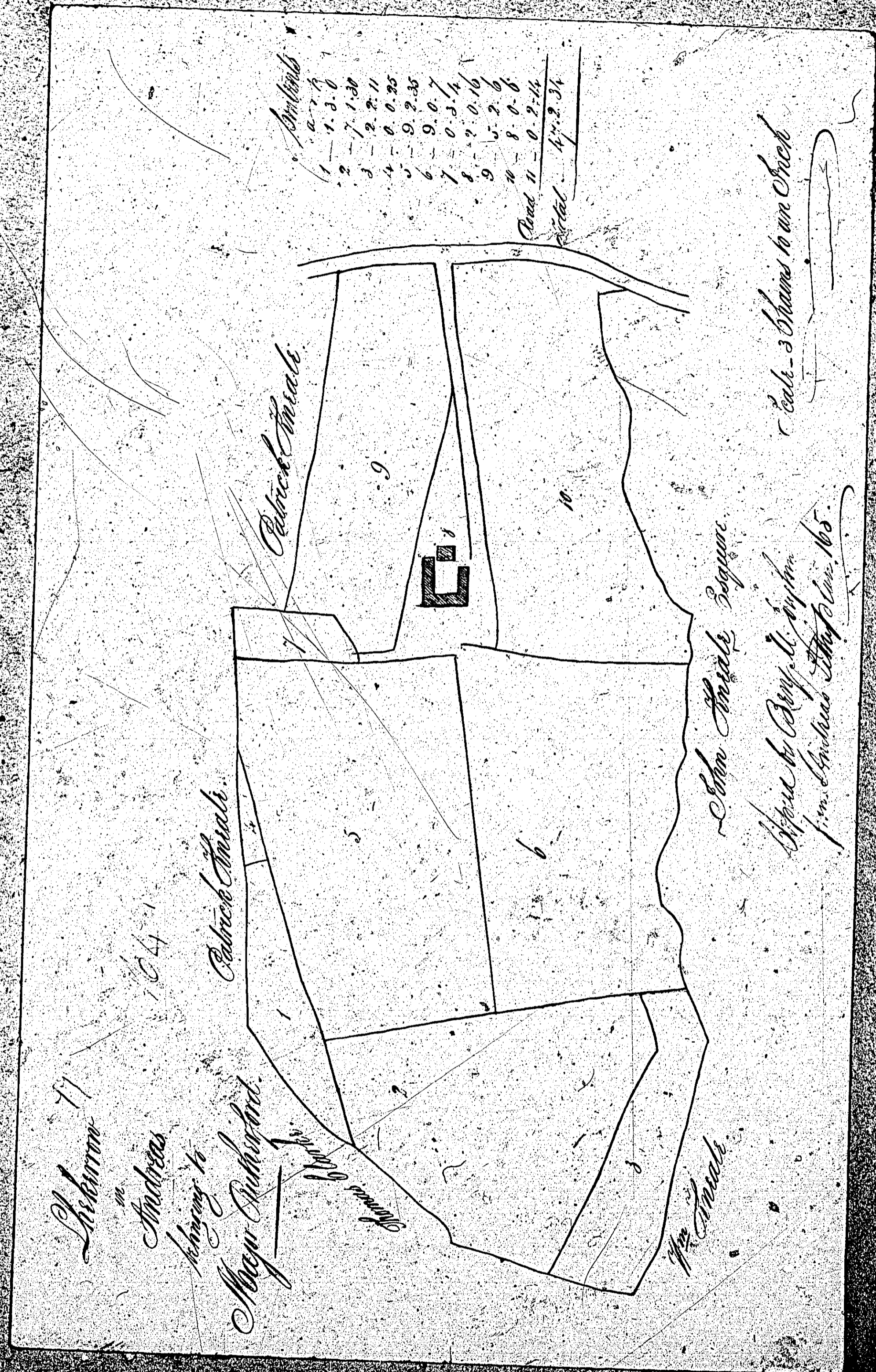


ISLE OF MAN GOVERNMENT: GENERAL REGISTRY
ASYLUM PLANS: PARISH OF ANDREAS

Original monotone

1:23

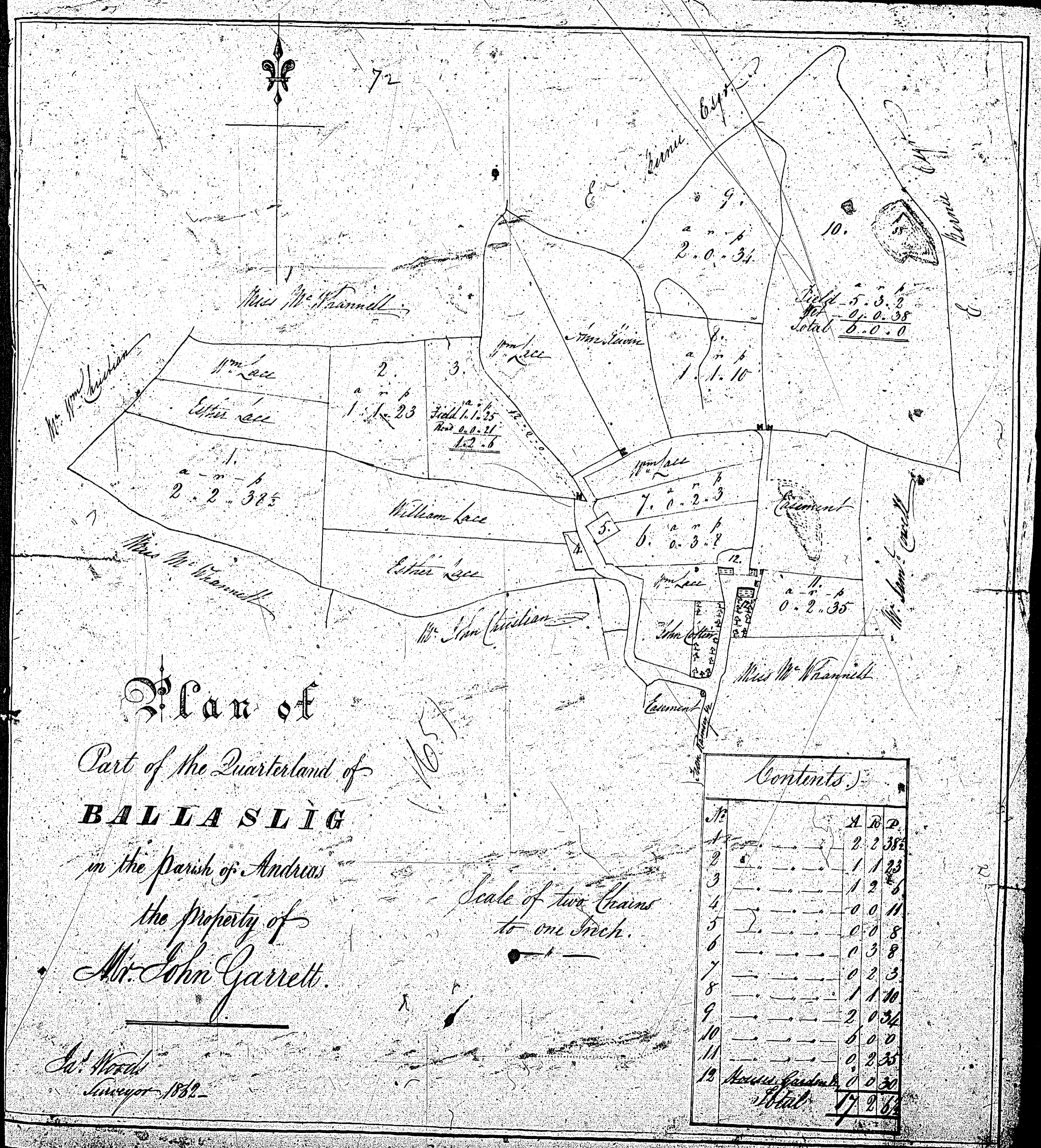


ISLE OF MAN GOVERNMENT: GENERAL REGISTRY

ASYLUM PLANS: PARISH OF ANDREAS

Original monotone

1:23



ISLE OF MAN GOVERNMENT: GENERAL REGISTRY

ASYLUM PLANS: PARISH OF ANDREAS

Original monotone

1:23

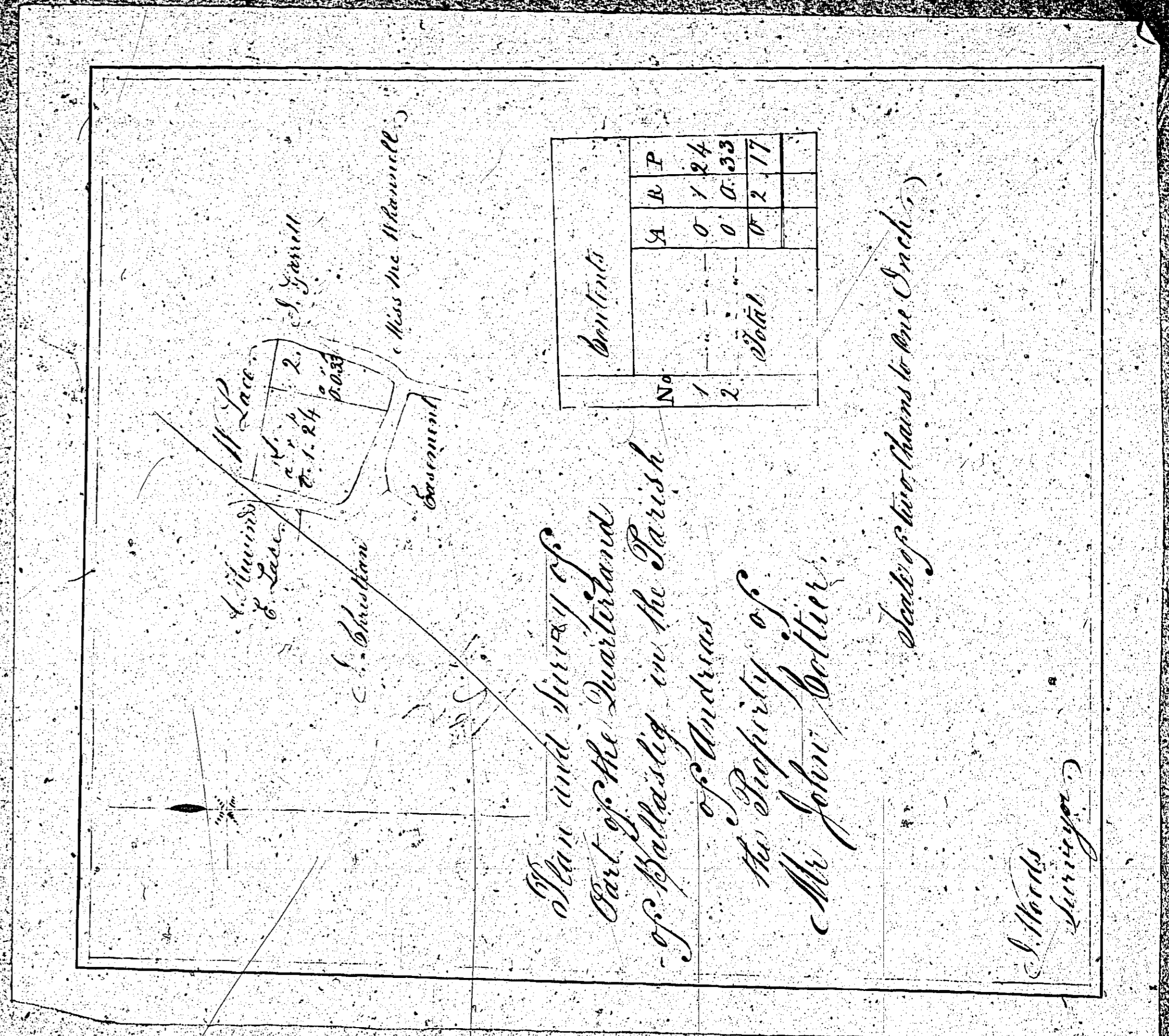
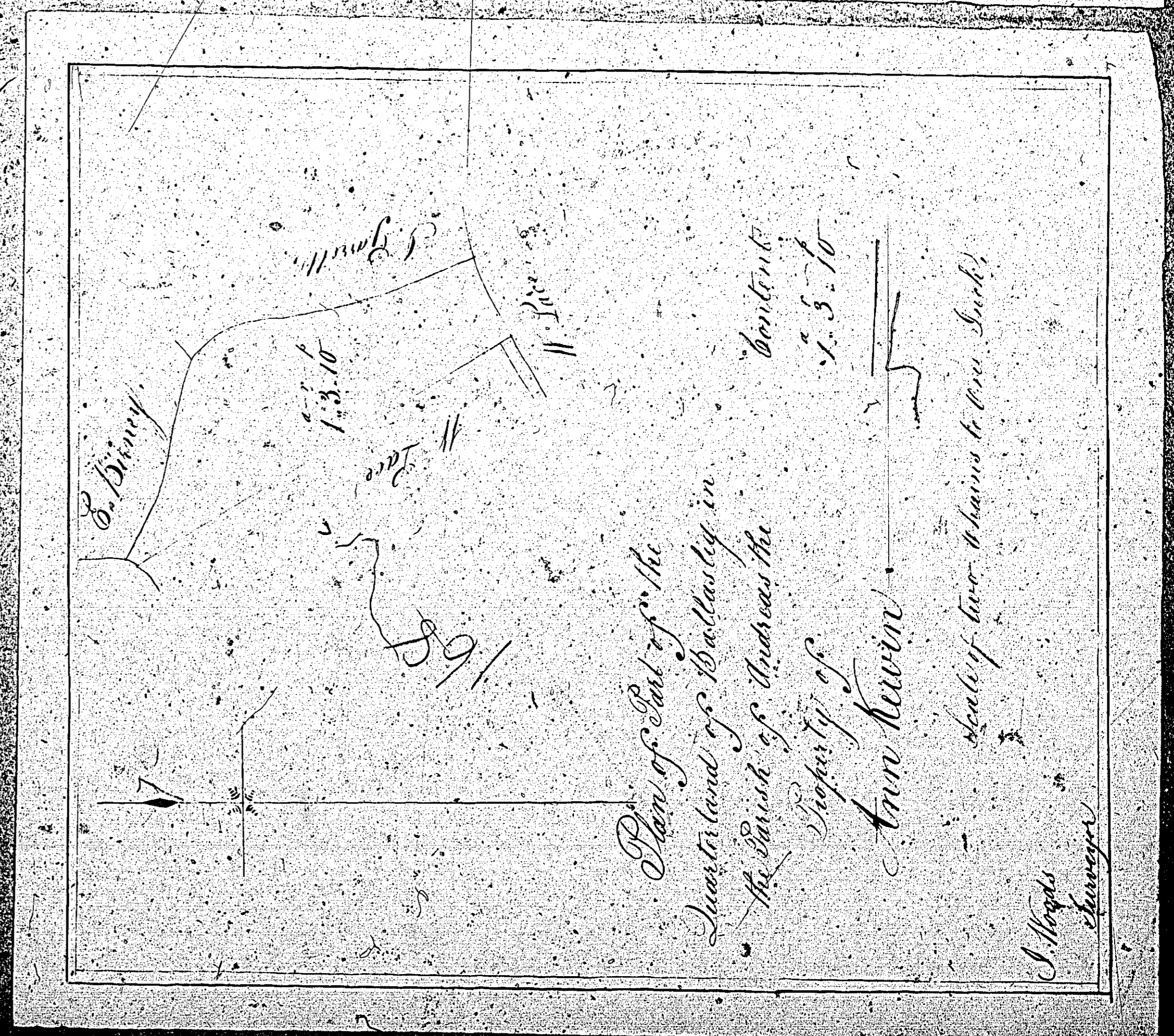


ISLE OF MAN GOVERNMENT: GENERAL REGISTRY

ASYLUM PLANS: PARISH OF ANDREAS

Originals monotone

1:23

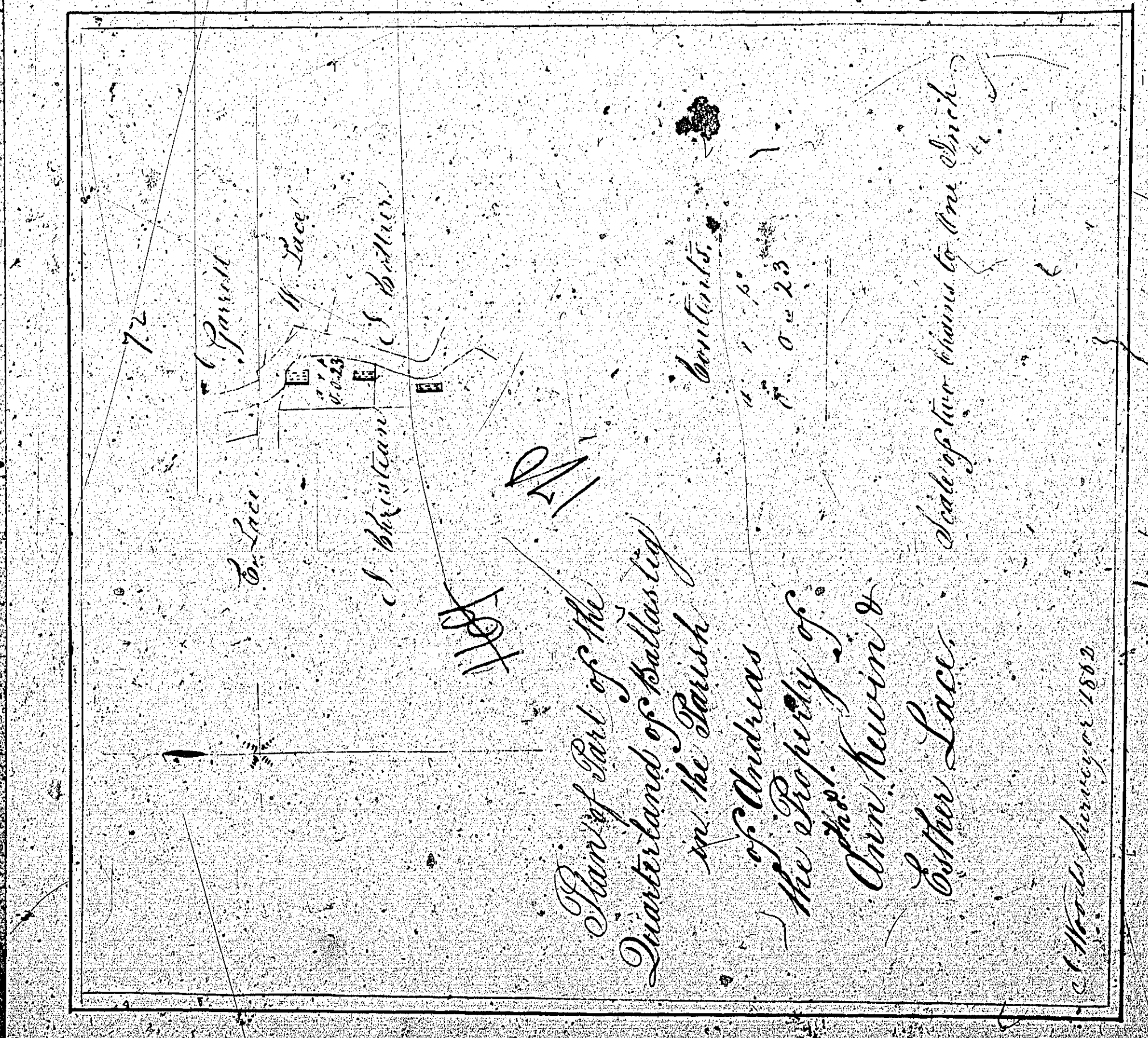
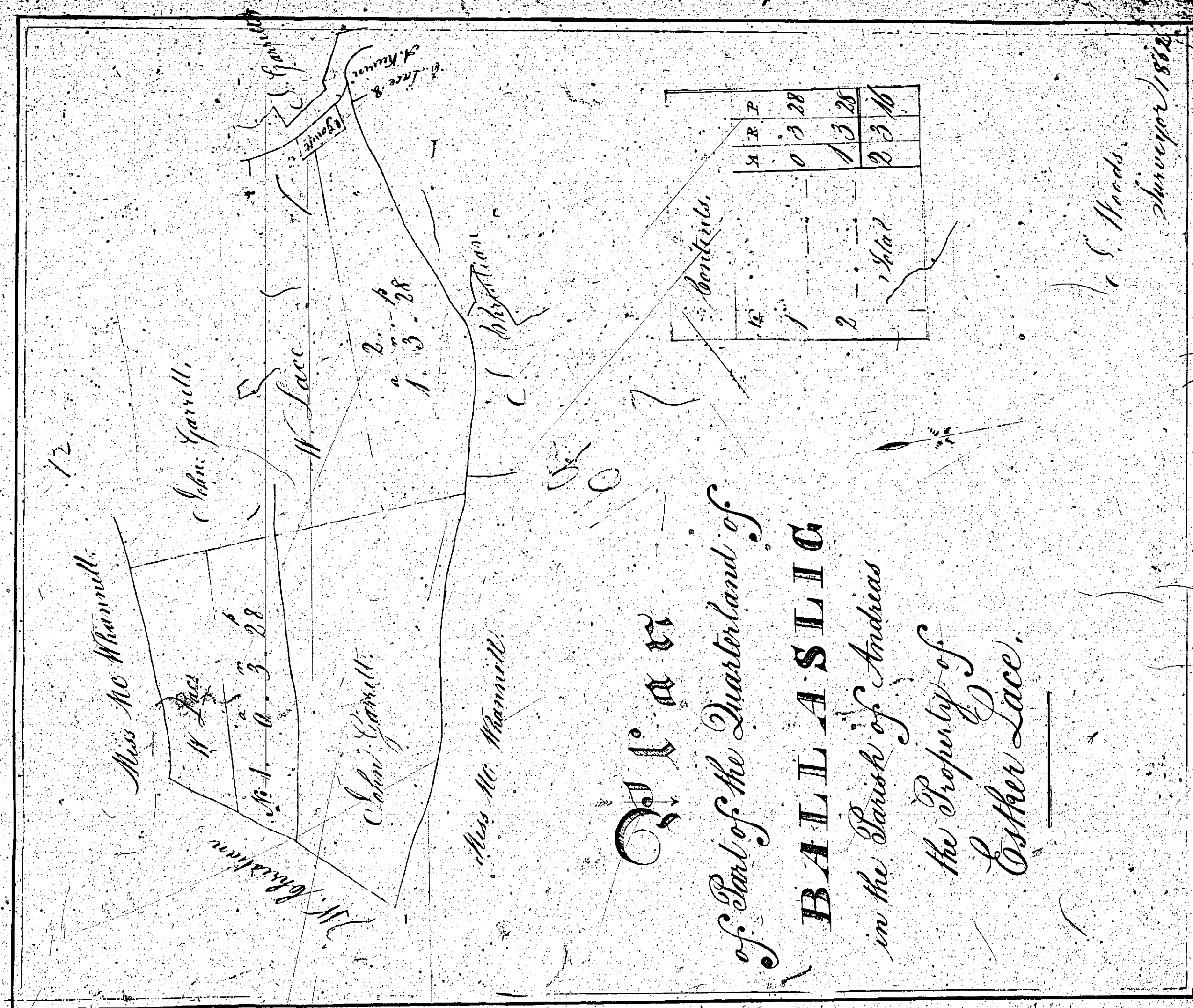


ISLE OF MAN GOVERNMENT: GENERAL REGISTRY

ASYLUM PLANS: PARISH OF ANDREAS

Originals monotone

1:23

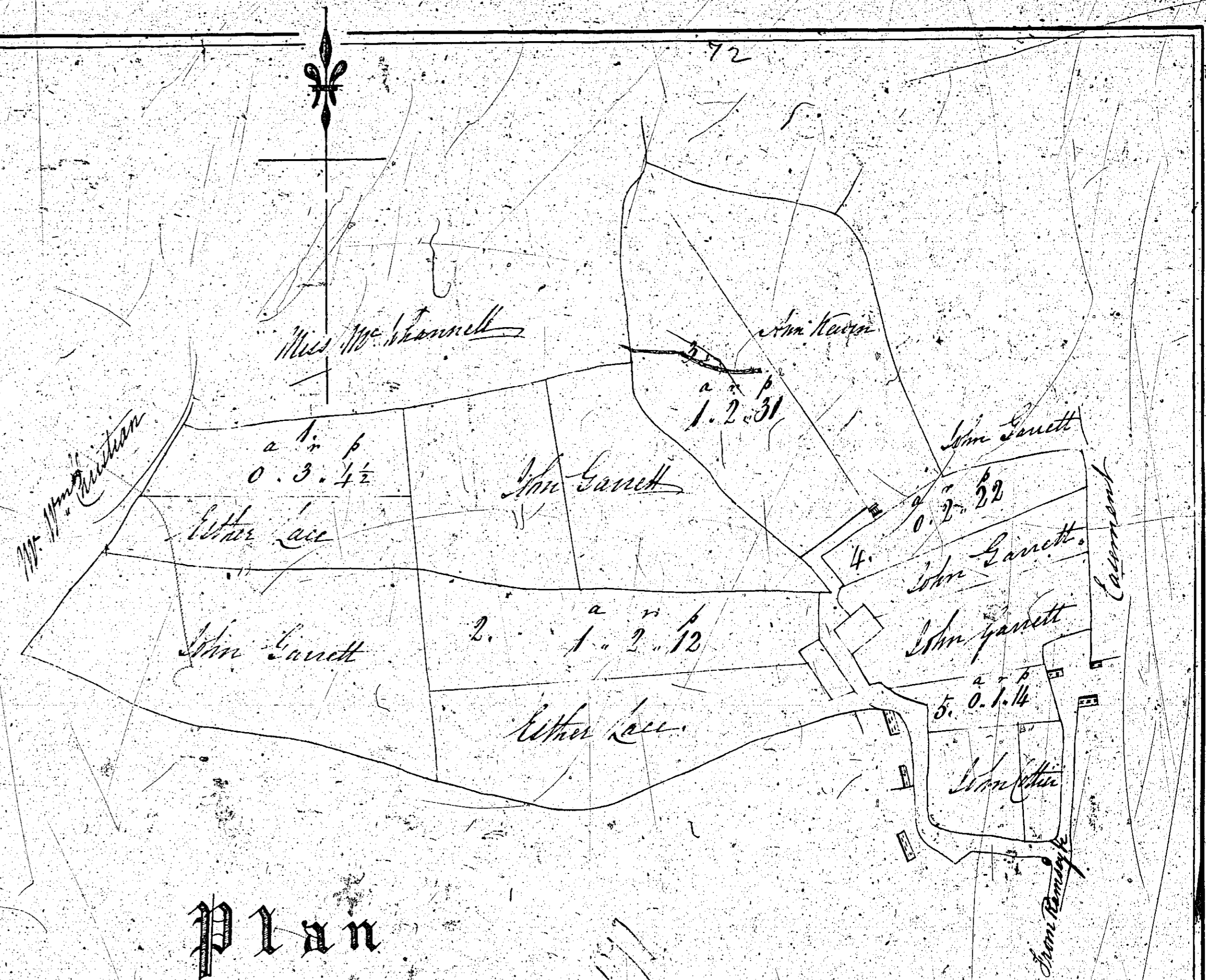


ISLE OF MAN GOVERNMENT: GENERAL REGISTRY

ASYLUM PLANS: PARISH OF ANDREAS

(Original monotone)

1:23



Plan
of part of the Quarterland of
BALLASLIG
in the Parish of Andreas
the property of
Mr. Wm. Lacey.

Contents.			
No.	A	R	P
1	0	3	44
2	1	2	12
3	1	2	31
4	0	2	22
5	0	1	14
Total	5	0	34

Scale of 2 Chains to one Inch.

S. Woods
Surveyor 1862.