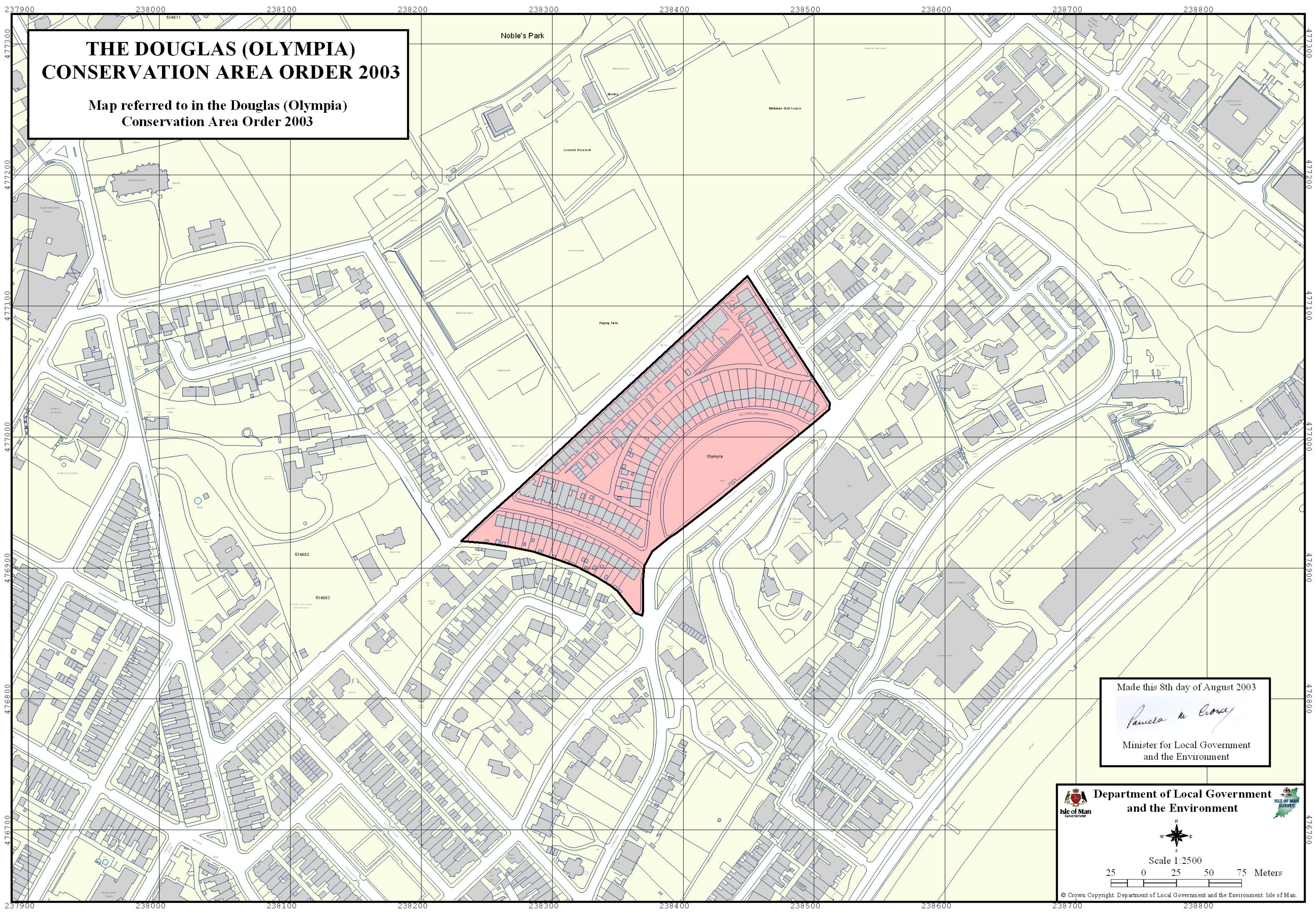


**THE DOUGLAS (OLYMPIA)
CONSERVATION AREA ORDER 2003**



Map referred to in the Douglas (Olympia)
Conservation Area Order 2003

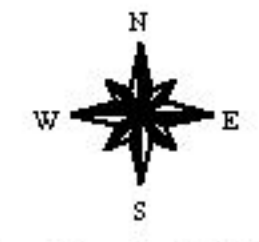


Made this 8th day of August 2003

Paula M. Croxall

Minister for Local Government
and the Environment

 **Department of Local Government
and the Environment** 



Scale 1:2500

25 0 25 50 75 Meters

© Crown Copyright. Department of Local Government and the Environment, Isle of Man.