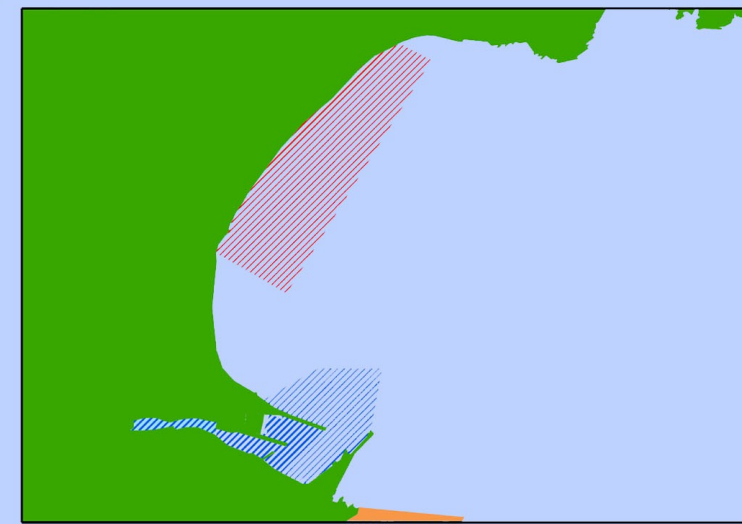
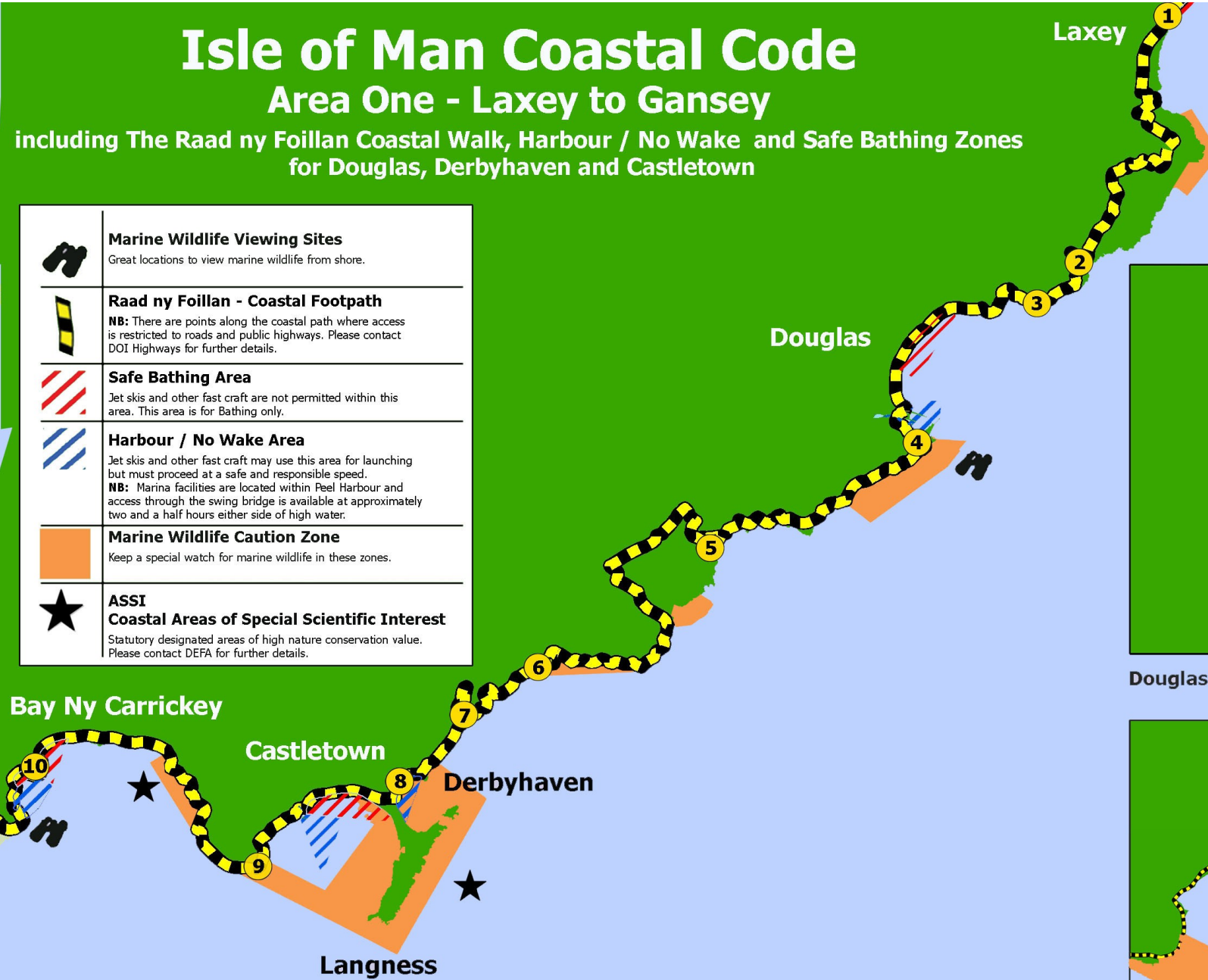


# Isle of Man Coastal Code

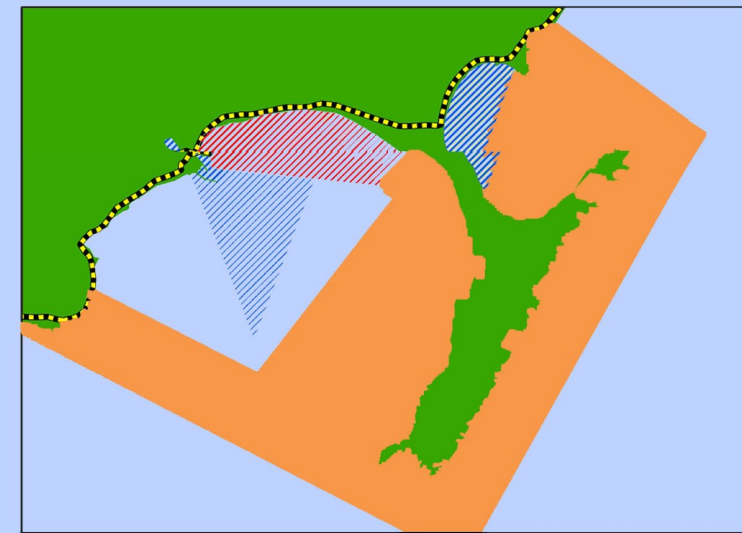
## Area One - Laxey to Gansey

including The Raad ny Foillan Coastal Walk, Harbour / No Wake and Safe Bathing Zones for Douglas, Derbyhaven and Castletown

	<b>Marine Wildlife Viewing Sites</b> Great locations to view marine wildlife from shore.
	<b>Raad ny Foillan - Coastal Footpath</b> <b>NB:</b> There are points along the coastal path where access is restricted to roads and public highways. Please contact DOI Highways for further details.
	<b>Safe Bathing Area</b> Jet skis and other fast craft are not permitted within this area. This area is for Bathing only.
	<b>Harbour / No Wake Area</b> Jet skis and other fast craft may use this area for launching but must proceed at a safe and responsible speed. <b>NB:</b> Marina facilities are located within Peel Harbour and access through the swing bridge is available at approximately two and a half hours either side of high water.
	<b>Marine Wildlife Caution Zone</b> Keep a special watch for marine wildlife in these zones.
	<b>ASSI Coastal Areas of Special Scientific Interest</b> Statutory designated areas of high nature conservation value. Please contact DEFA for further details.



Douglas Harbour / No Wake and Safe Bathing Areas



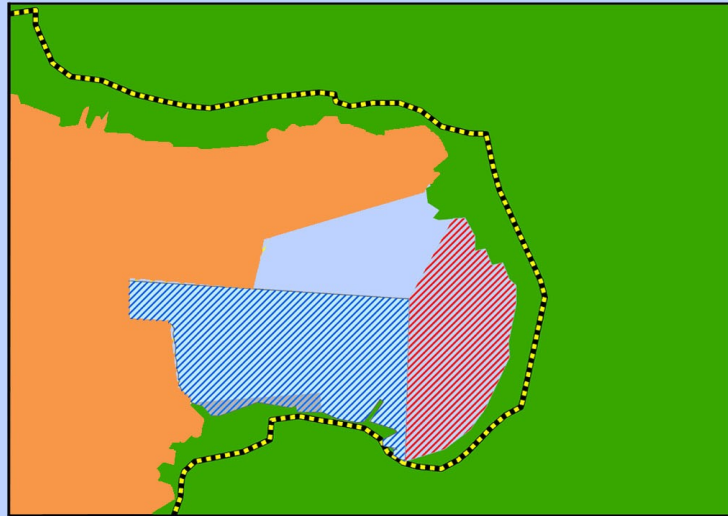
Castletown and Derbyhaven Harbour / No Wake and Safe Bathing Areas

**Basking Shark season runs from May until September  
but keep a look out at all times as marine wildlife visit Manx waters all year round**

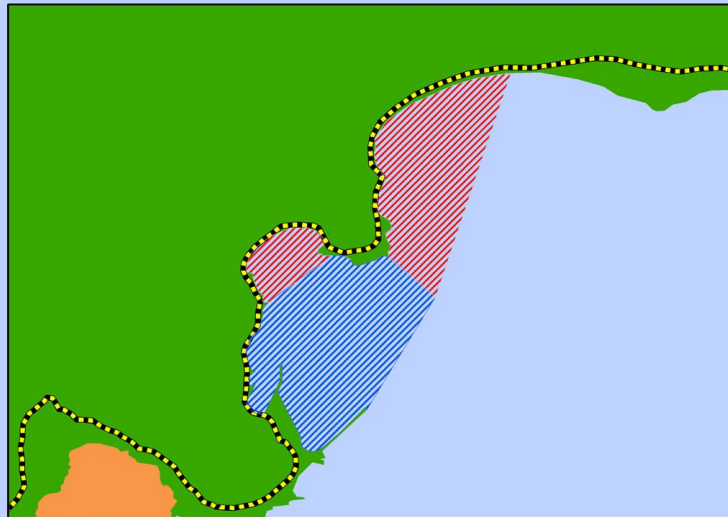
# Isle of Man Coastal Code

## Area Two - Gansey to Niarbyl

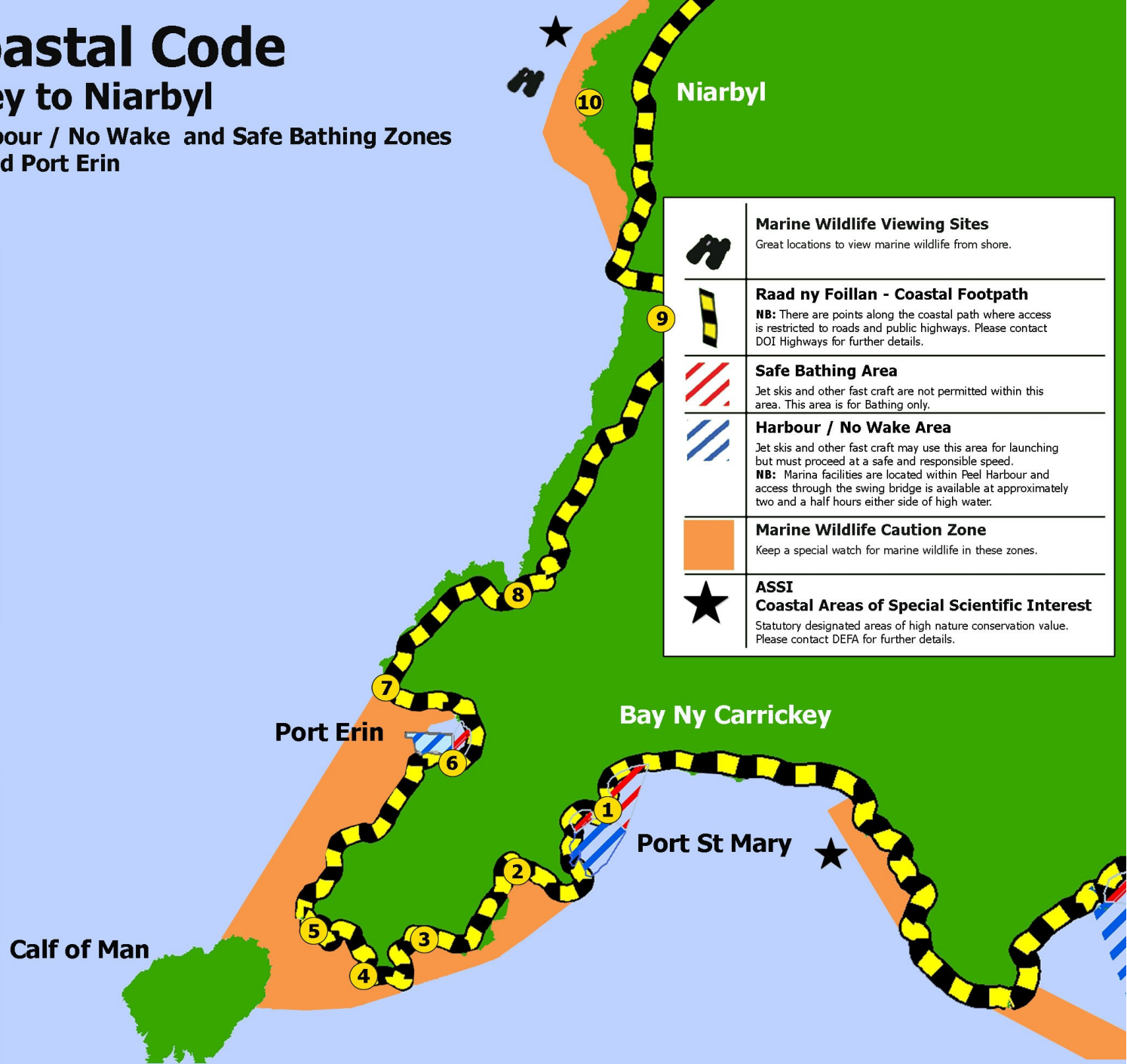
including The Raad ny Foillan Coastal Walk, Harbour / No Wake and Safe Bathing Zones for Port St Mary and Port Erin



Port Erin Harbour / No Wake and Safe Bathing Areas



Port St Mary Harbour / No Wake and Safe Bathing Areas including Gansey Bay



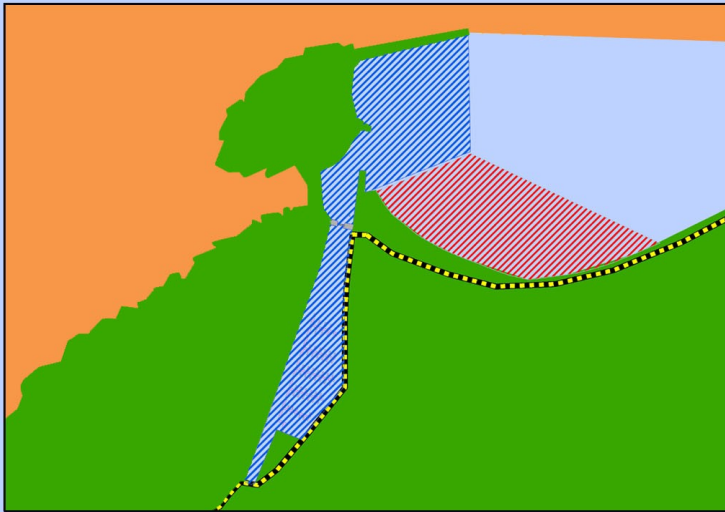
	<b>Marine Wildlife Viewing Sites</b> Great locations to view marine wildlife from shore.
	<b>Raad ny Foillan - Coastal Footpath</b> <b>NB:</b> There are points along the coastal path where access is restricted to roads and public highways. Please contact DOI Highways for further details.
	<b>Safe Bathing Area</b> Jet skis and other fast craft are not permitted within this area. This area is for Bathing only.
	<b>Harbour / No Wake Area</b> Jet skis and other fast craft may use this area for launching but must proceed at a safe and responsible speed. <b>NB:</b> Marina facilities are located within Peel Harbour and access through the swing bridge is available at approximately two and a half hours either side of high water.
	<b>Marine Wildlife Caution Zone</b> Keep a special watch for marine wildlife in these zones.
	<b>ASSI Coastal Areas of Special Scientific Interest</b> Statutory designated areas of high nature conservation value. Please contact DEFA for further details.

**Basking Shark season runs from May until September but keep a look out at all times as marine wildlife visit Manx waters all year round**

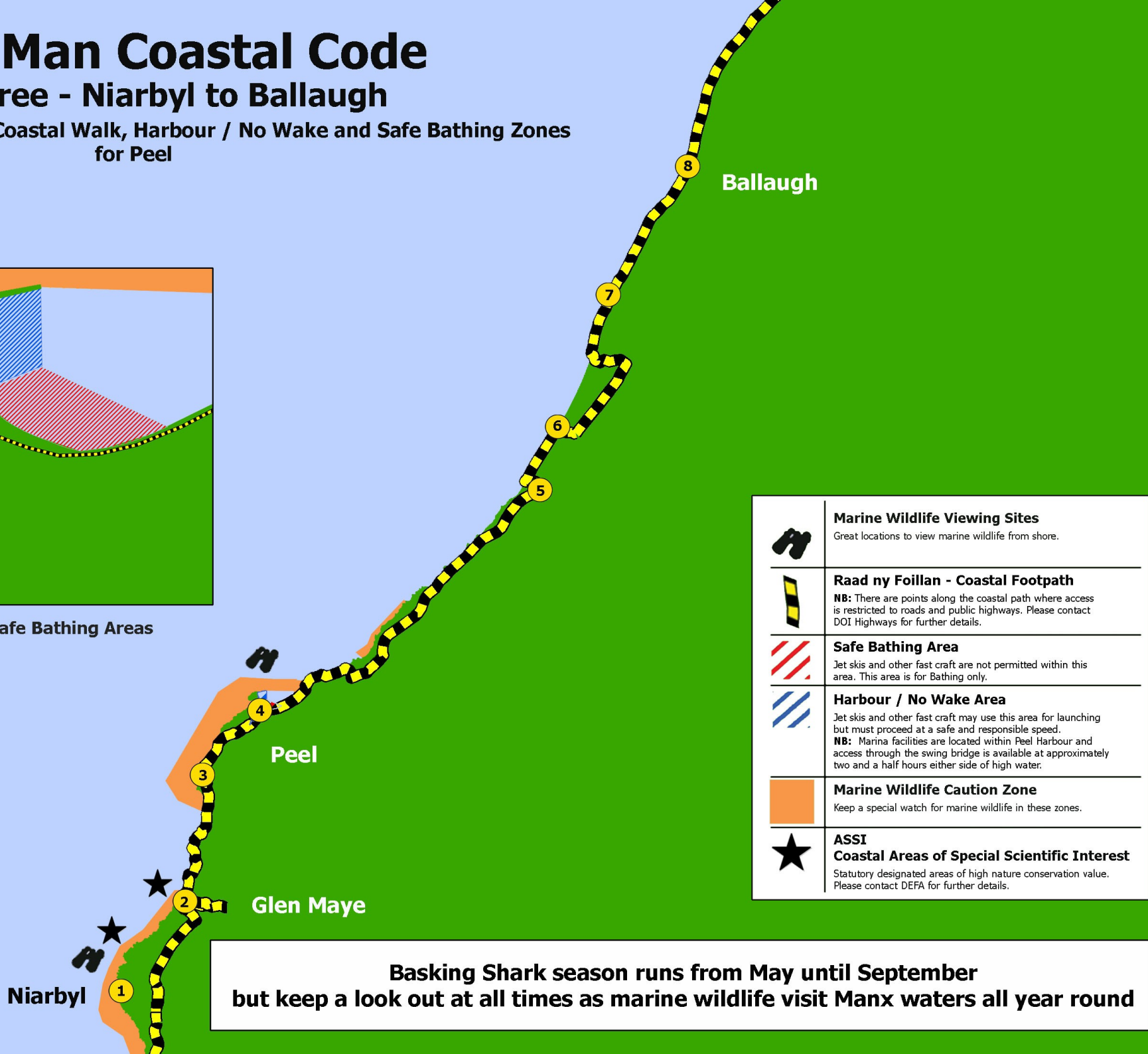
# Isle of Man Coastal Code

## Area Three - Niarbyl to Ballaugh

including The Raad ny Foillan Coastal Walk, Harbour / No Wake and Safe Bathing Zones for Peel



Peel Harbour / No Wake and Safe Bathing Areas



	<b>Marine Wildlife Viewing Sites</b> Great locations to view marine wildlife from shore.
	<b>Raad ny Foillan - Coastal Footpath</b> <b>NB:</b> There are points along the coastal path where access is restricted to roads and public highways. Please contact DOI Highways for further details.
	<b>Safe Bathing Area</b> Jet skis and other fast craft are not permitted within this area. This area is for Bathing only.
	<b>Harbour / No Wake Area</b> Jet skis and other fast craft may use this area for launching but must proceed at a safe and responsible speed. <b>NB:</b> Marina facilities are located within Peel Harbour and access through the swing bridge is available at approximately two and a half hours either side of high water.
	<b>Marine Wildlife Caution Zone</b> Keep a special watch for marine wildlife in these zones.
	<b>ASSI Coastal Areas of Special Scientific Interest</b> Statutory designated areas of high nature conservation value. Please contact DEFA for further details.

**Basking Shark season runs from May until September but keep a look out at all times as marine wildlife visit Manx waters all year round**

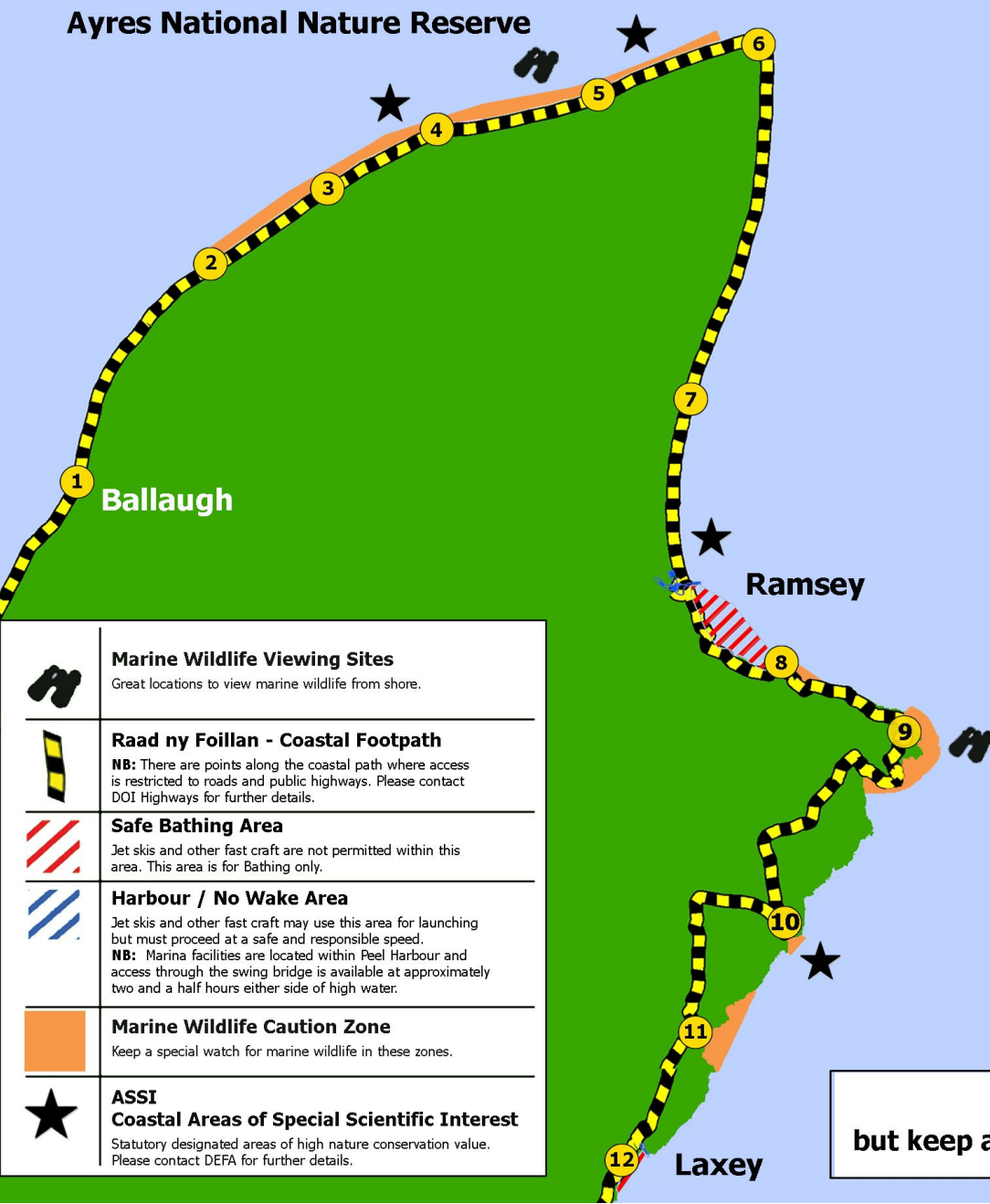


# Isle of Man Coastal Code

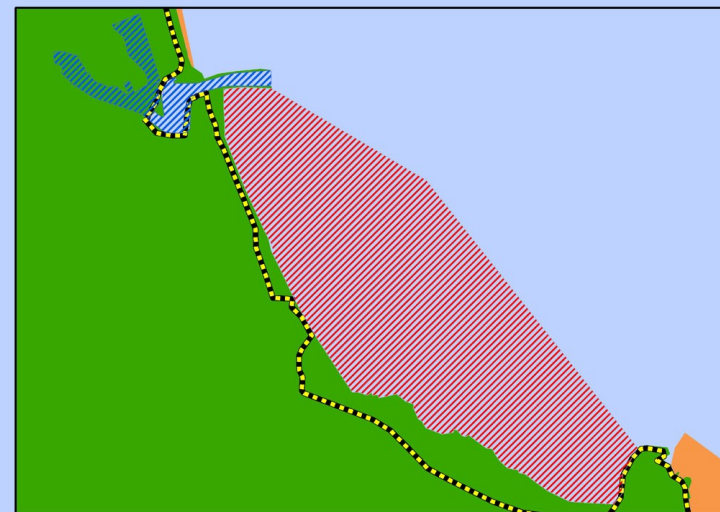
## Area Four - Ballaugh to Laxey

including The Raad ny Foillan Coastal Walk, Harbour / No Wake and Safe Bathing Zones for Ramsey and Laxey

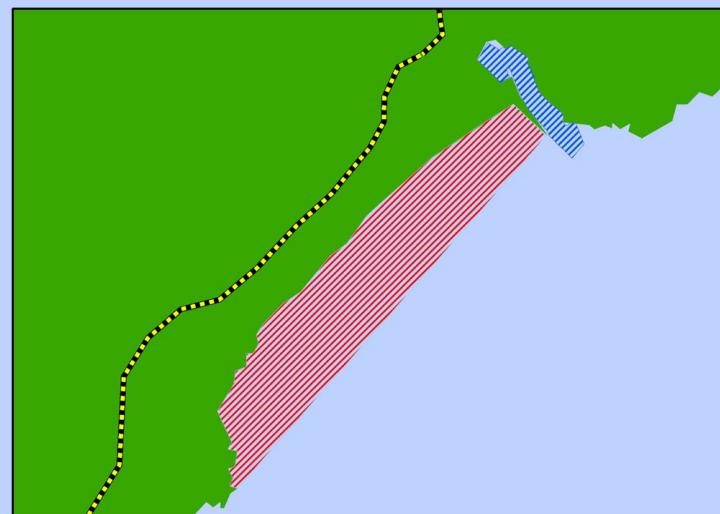
Ayres National Nature Reserve



	<b>Marine Wildlife Viewing Sites</b> Great locations to view marine wildlife from shore.
	<b>Raad ny Foillan - Coastal Footpath</b> <b>NB:</b> There are points along the coastal path where access is restricted to roads and public highways. Please contact DOI Highways for further details.
	<b>Safe Bathing Area</b> Jet skis and other fast craft are not permitted within this area. This area is for Bathing only.
	<b>Harbour / No Wake Area</b> Jet skis and other fast craft may use this area for launching but must proceed at a safe and responsible speed. <b>NB:</b> Marina facilities are located within Peel Harbour and access through the swing bridge is available at approximately two and a half hours either side of high water.
	<b>Marine Wildlife Caution Zone</b> Keep a special watch for marine wildlife in these zones.
	<b>ASSEI Coastal Areas of Special Scientific Interest</b> Statutory designated areas of high nature conservation value. Please contact DEFA for further details.



Ramsey Harbour / No Wake and Safe Bathing Areas



Laxey Harbour / No Wake and Safe Bathing Areas

**Basking Shark season runs from May until September but keep a look out at all times as marine wildlife visit Manx waters all year round**