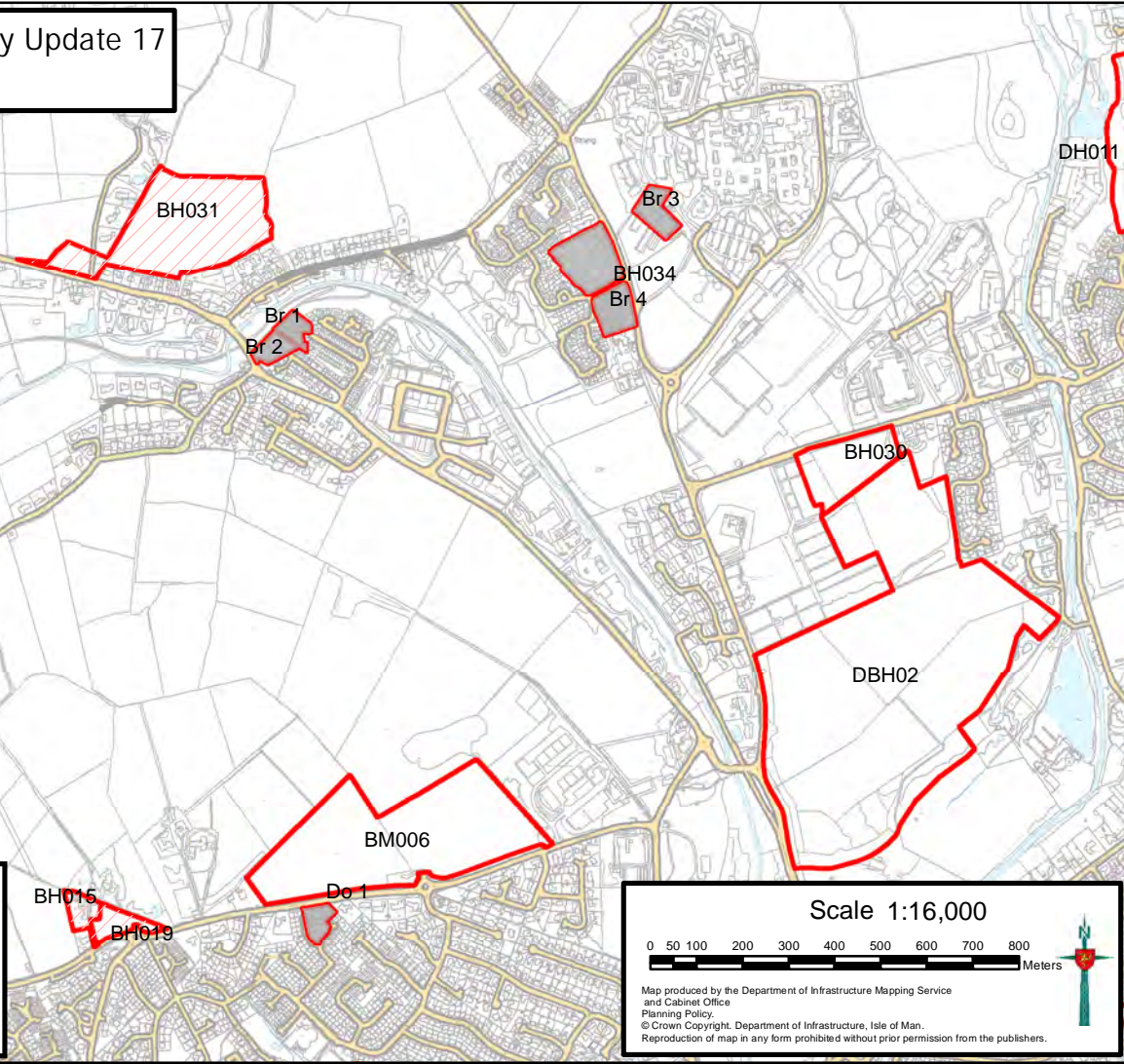



Residential Land Availability Update 17

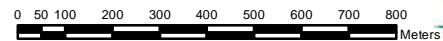
East Map 1: Braddan



Legend

-  Strategic Reserve
-  Residential Land Availability 2024
-  Land No Longer Available

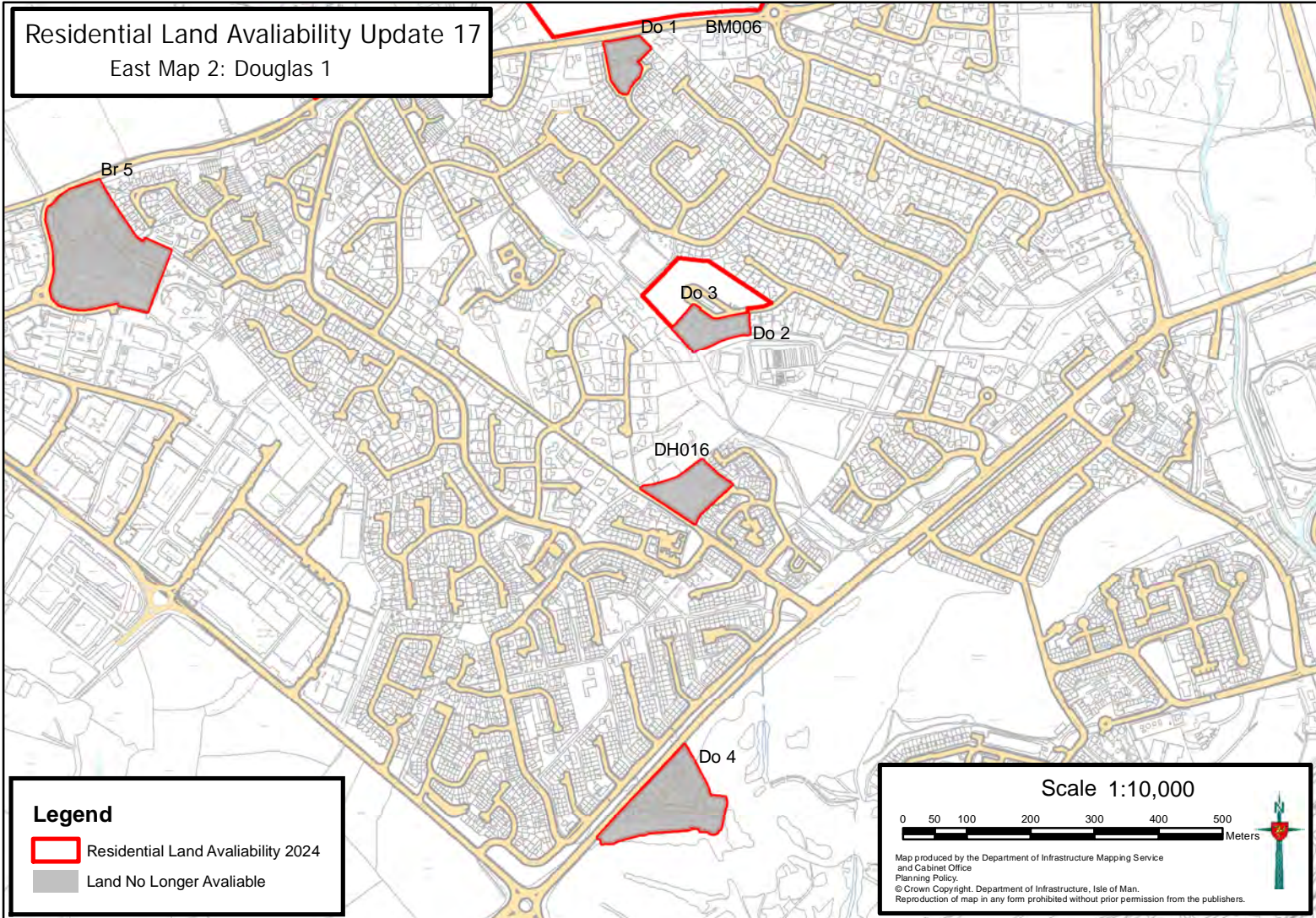
Scale 1:16,000



Map produced by the Department of Infrastructure Mapping Service and Cabinet Office Planning Policy.
© Crown Copyright, Department of Infrastructure, Isle of Man.
Reproduction of map in any form prohibited without prior permission from the publishers.

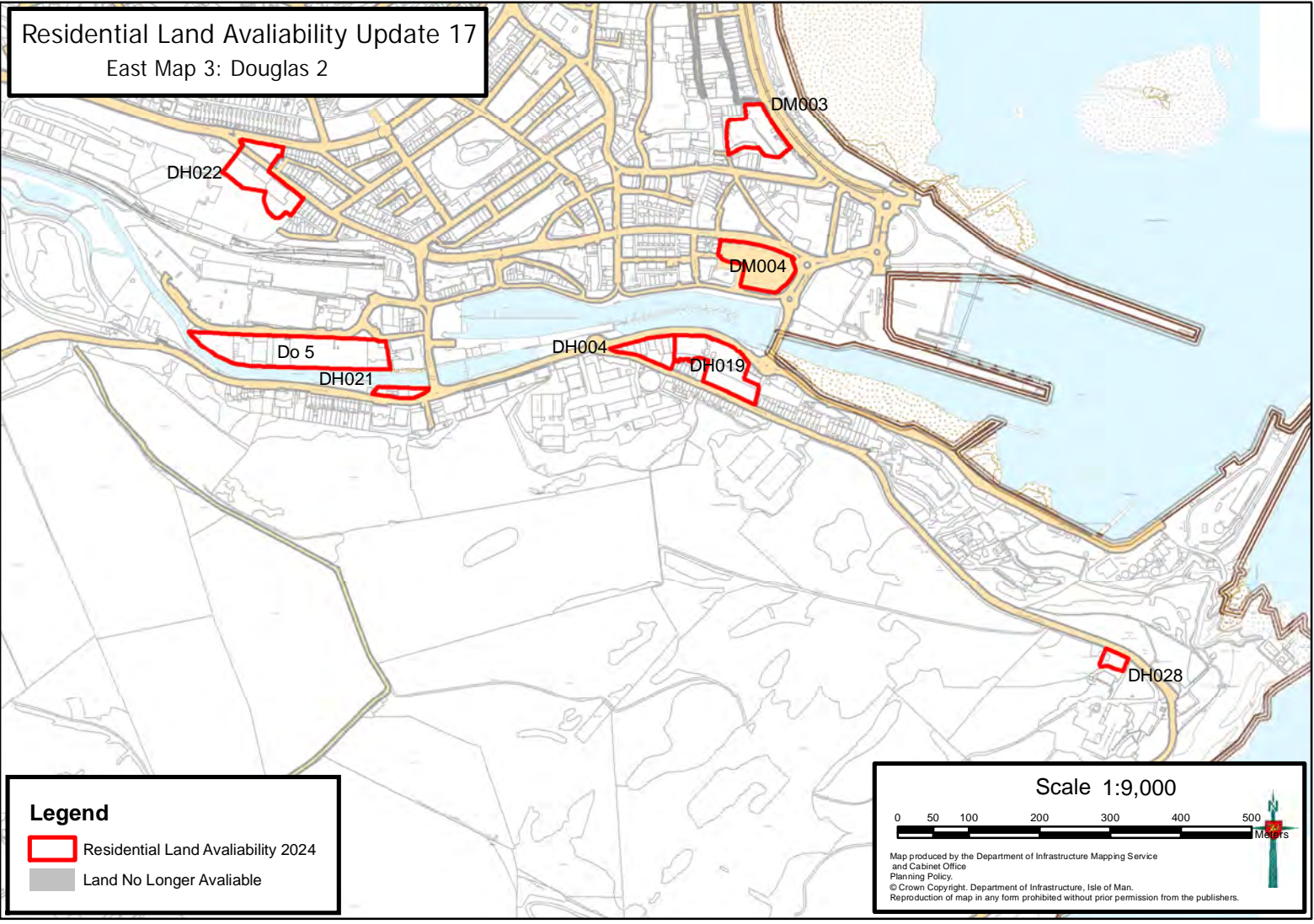
Residential Land Availability Update 17

East Map 2: Douglas 1





Residential Land Availability Update 17

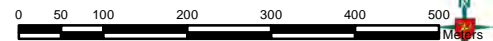
East Map 3: Douglas 2



Legend

-  Residential Land Availability 2024
-  Land No Longer Available

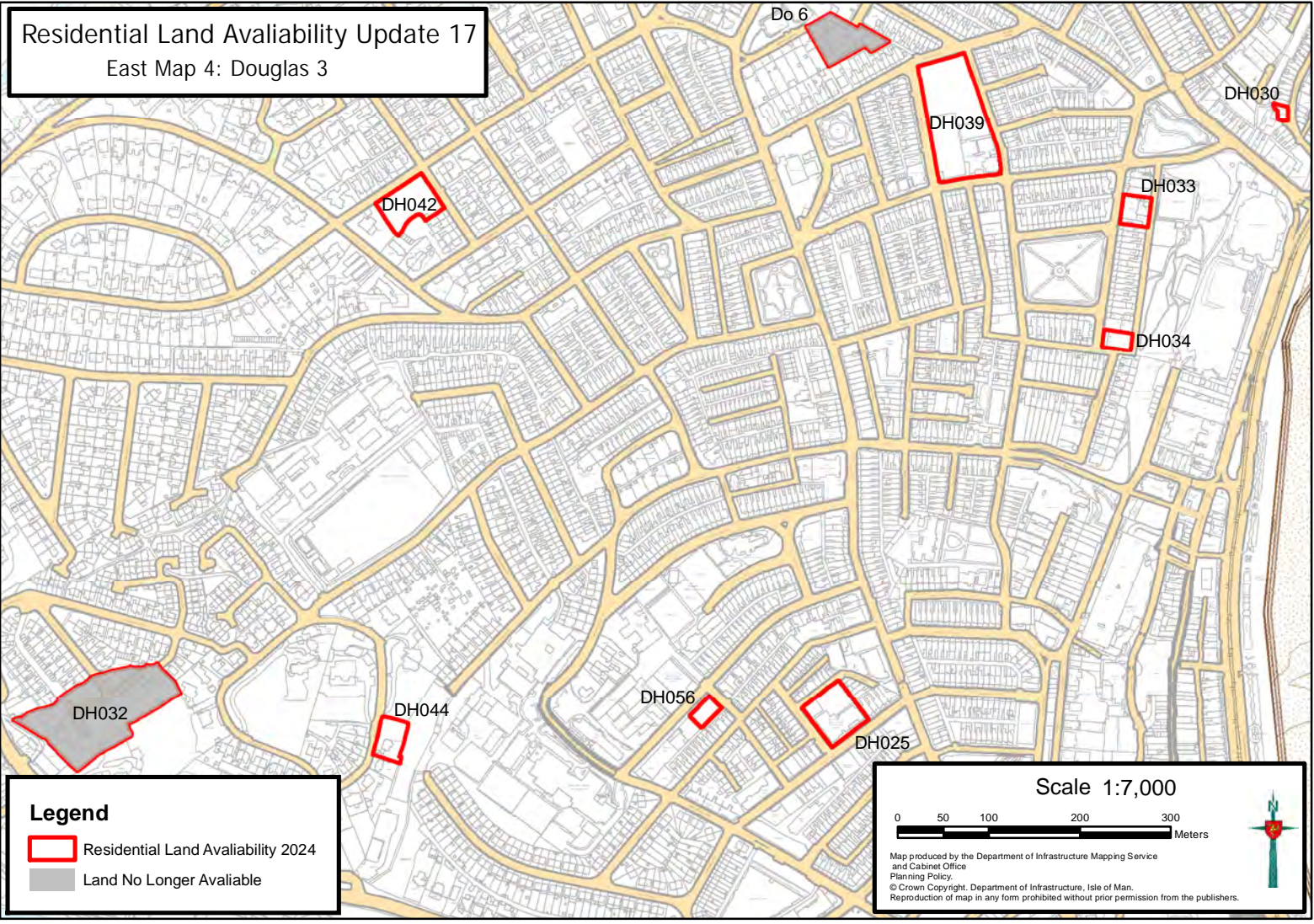
Scale 1:9,000





Map produced by the Department of Infrastructure Mapping Service and Cabinet Office Planning Policy.
© Crown Copyright, Department of Infrastructure, Isle of Man.
Reproduction of map in any form prohibited without prior permission from the publishers.

Residential Land Availability Update 17

East Map 4: Douglas 3



Legend

-  Residential Land Availability 2024
-  Land No Longer Available

Scale 1:7,000

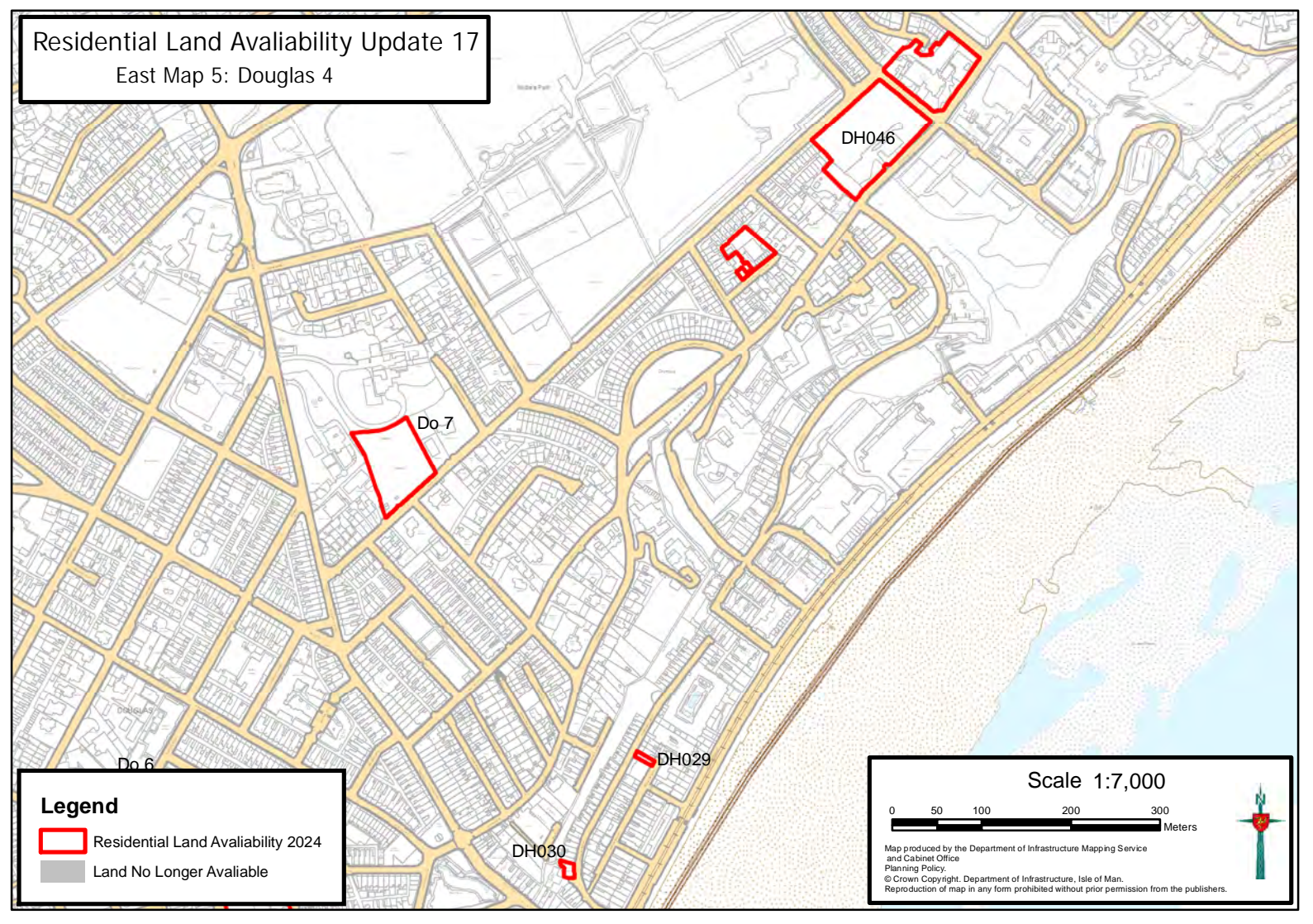


Map produced by the Department of Infrastructure Mapping Service and Cabinet Office Planning Policy.
© Crown Copyright, Department of Infrastructure, Isle of Man.
Reproduction of map in any form prohibited without prior permission from the publishers.





Residential Land Availability Update 17

East Map 5: Douglas 4



Legend

-  Residential Land Availability 2024
-  Land No Longer Available

Scale 1:7,000

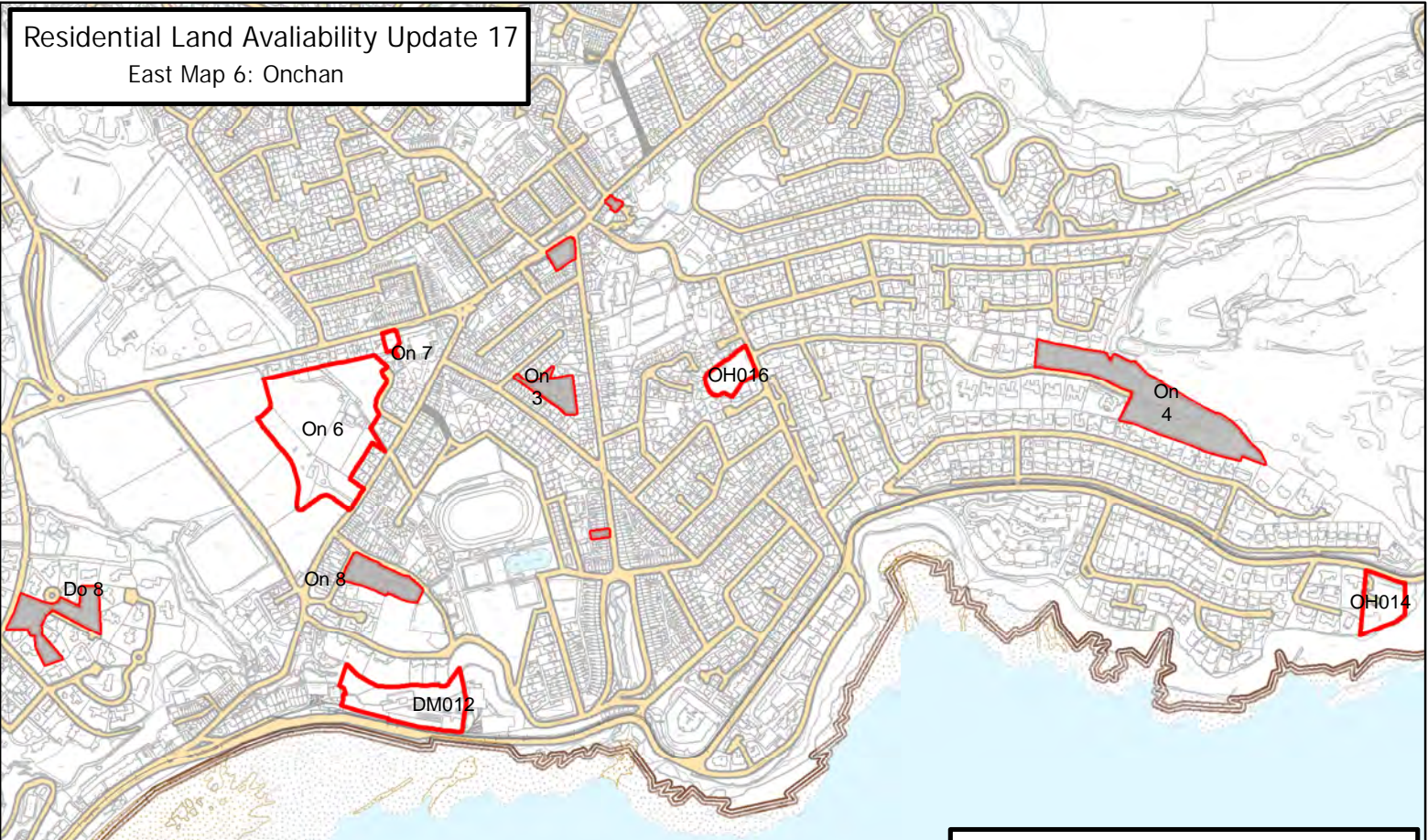


Map produced by the Department of Infrastructure Mapping Service
and Cabinet Office
Planning Policy.
© Crown Copyright, Department of Infrastructure, Isle of Man.
Reproduction of map in any form prohibited without prior permission from the publishers.





Residential Land Availability Update 17

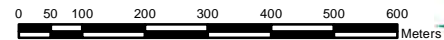
East Map 6: Onchan



Legend

-  Residential Land Availability 2024
-  Land No Longer Available

Scale 1:12,000

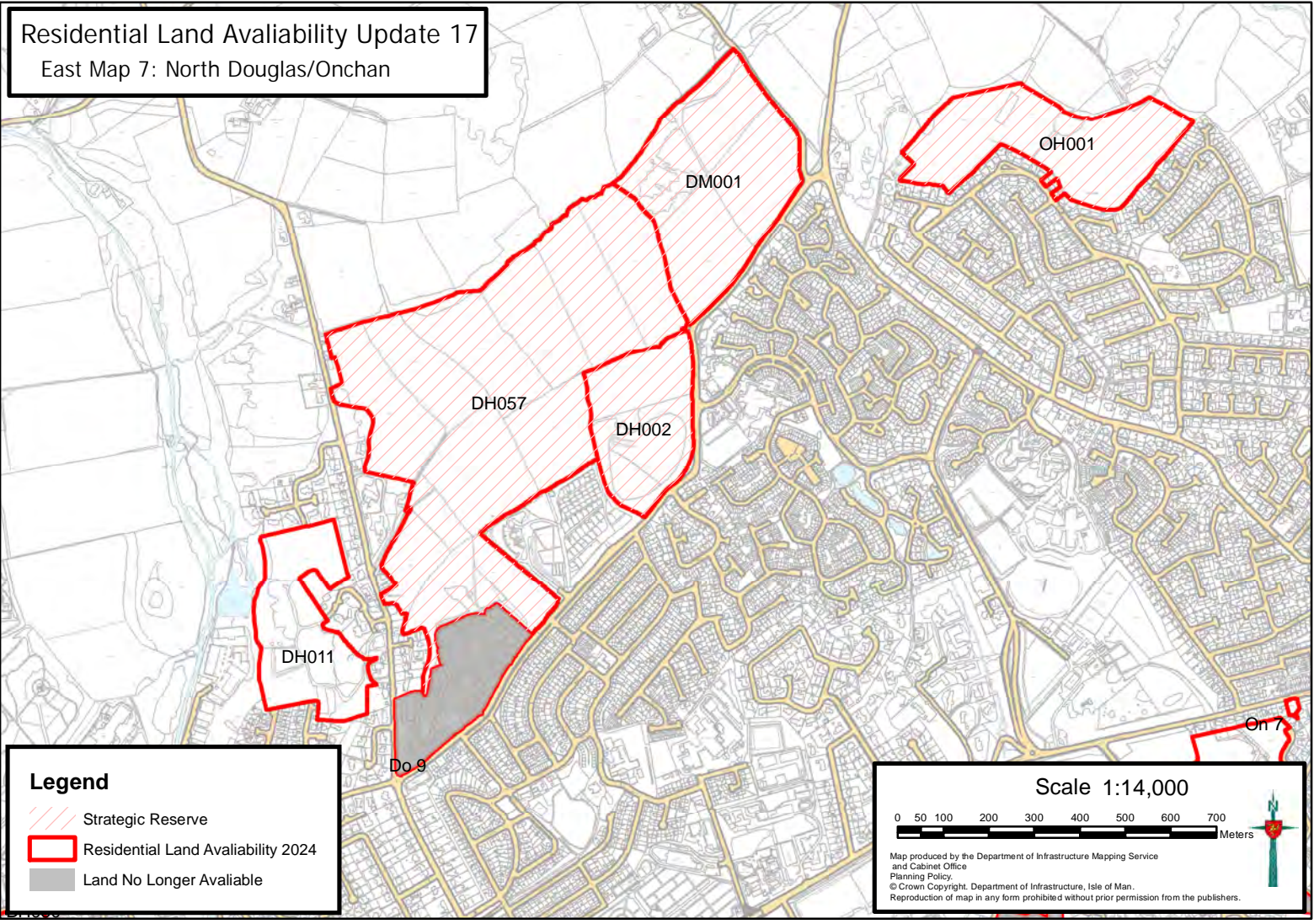


Map produced by the Department of Infrastructure Mapping Service and Cabinet Office Planning Policy.
© Crown Copyright, Department of Infrastructure, Isle of Man.
Reproduction of map in any form prohibited without prior permission from the publishers.






Residential Land Availability Update 17

East Map 7: North Douglas/Onchan



Legend

-  Strategic Reserve
-  Residential Land Availability 2024
-  Land No Longer Available

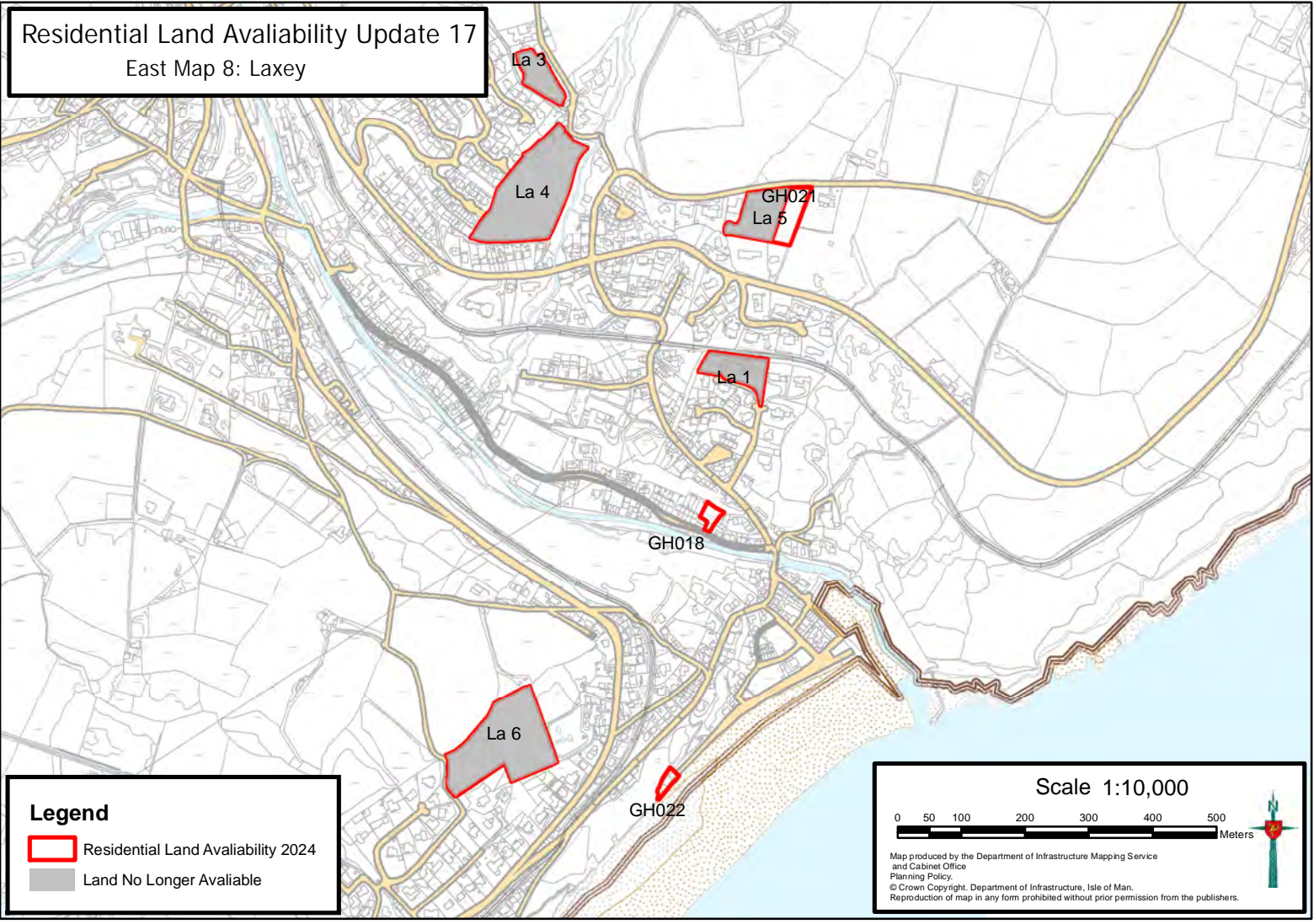
Scale 1:14,000





Map produced by the Department of Infrastructure Mapping Service and Cabinet Office Planning Policy.
© Crown Copyright, Department of Infrastructure, Isle of Man.
Reproduction of map in any form prohibited without prior permission from the publishers.

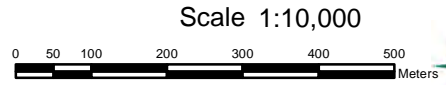
Residential Land Availability Update 17

East Map 8: Laxey



Legend

-  Residential Land Availability 2024
-  Land No Longer Available

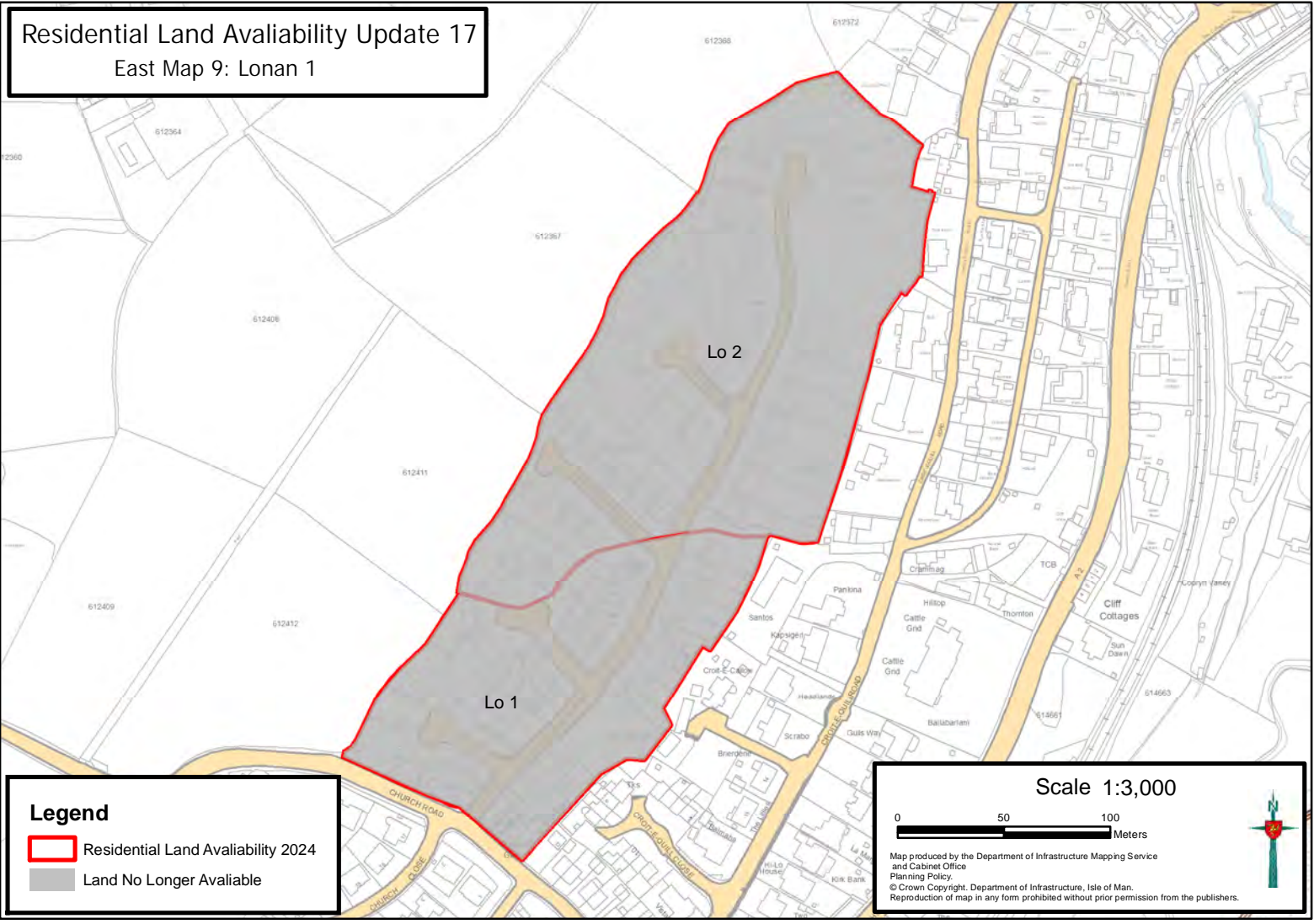


Map produced by the Department of Infrastructure Mapping Service and Cabinet Office Planning Policy.
© Crown Copyright, Department of Infrastructure, Isle of Man.
Reproduction of map in any form prohibited without prior permission from the publishers.





Residential Land Availability Update 17

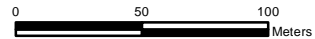
East Map 9: Lonan 1



Legend

-  Residential Land Availability 2024
-  Land No Longer Available

Scale 1:3,000

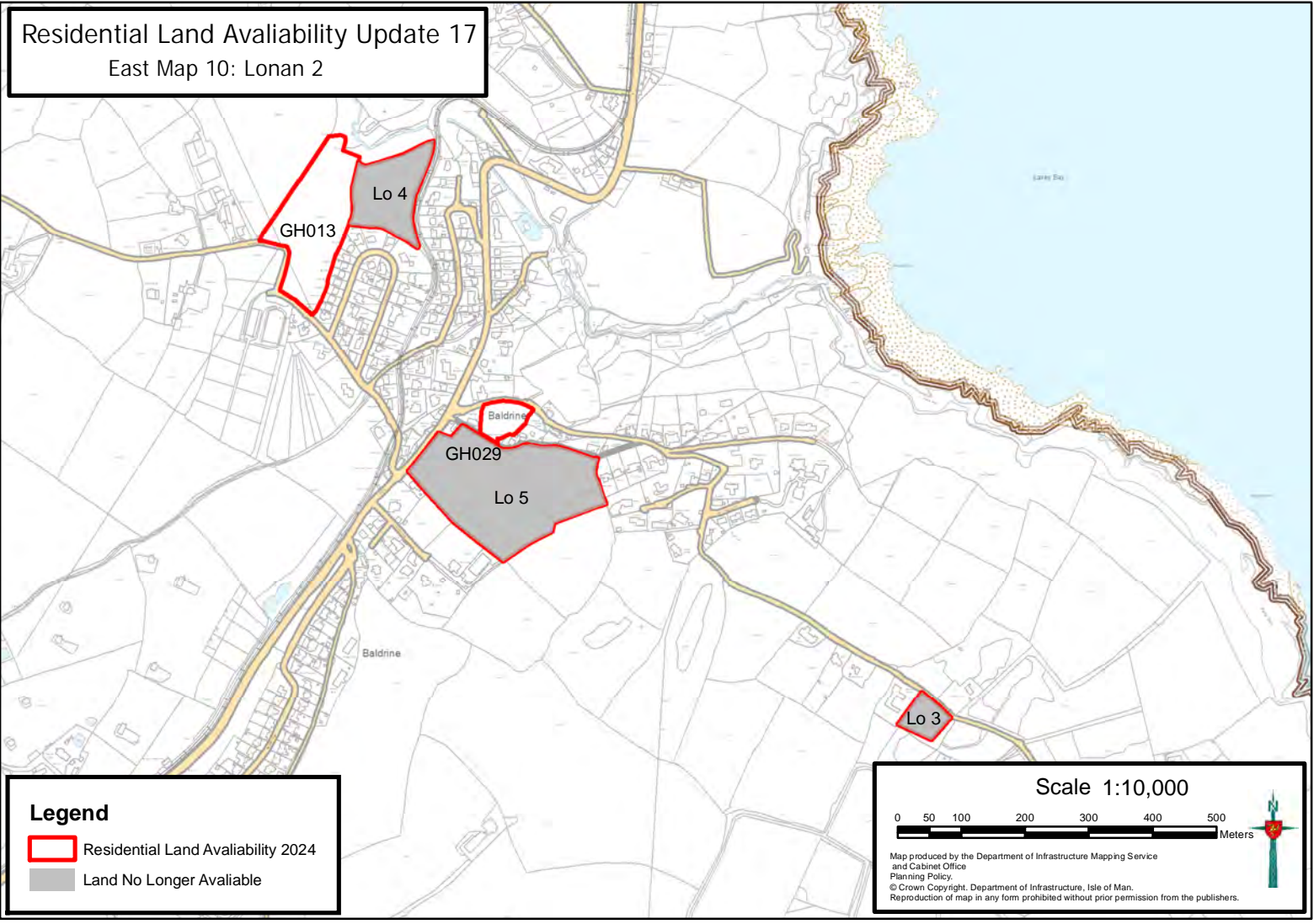


Map produced by the Department of Infrastructure Mapping Service and Cabinet Office Planning Policy.
© Crown Copyright, Department of Infrastructure, Isle of Man.
Reproduction of map in any form prohibited without prior permission from the publishers.





Residential Land Availability Update 17

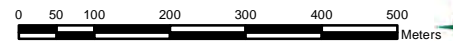
East Map 10: Lonan 2



Legend

-  Residential Land Availability 2024
-  Land No Longer Available

Scale 1:10,000

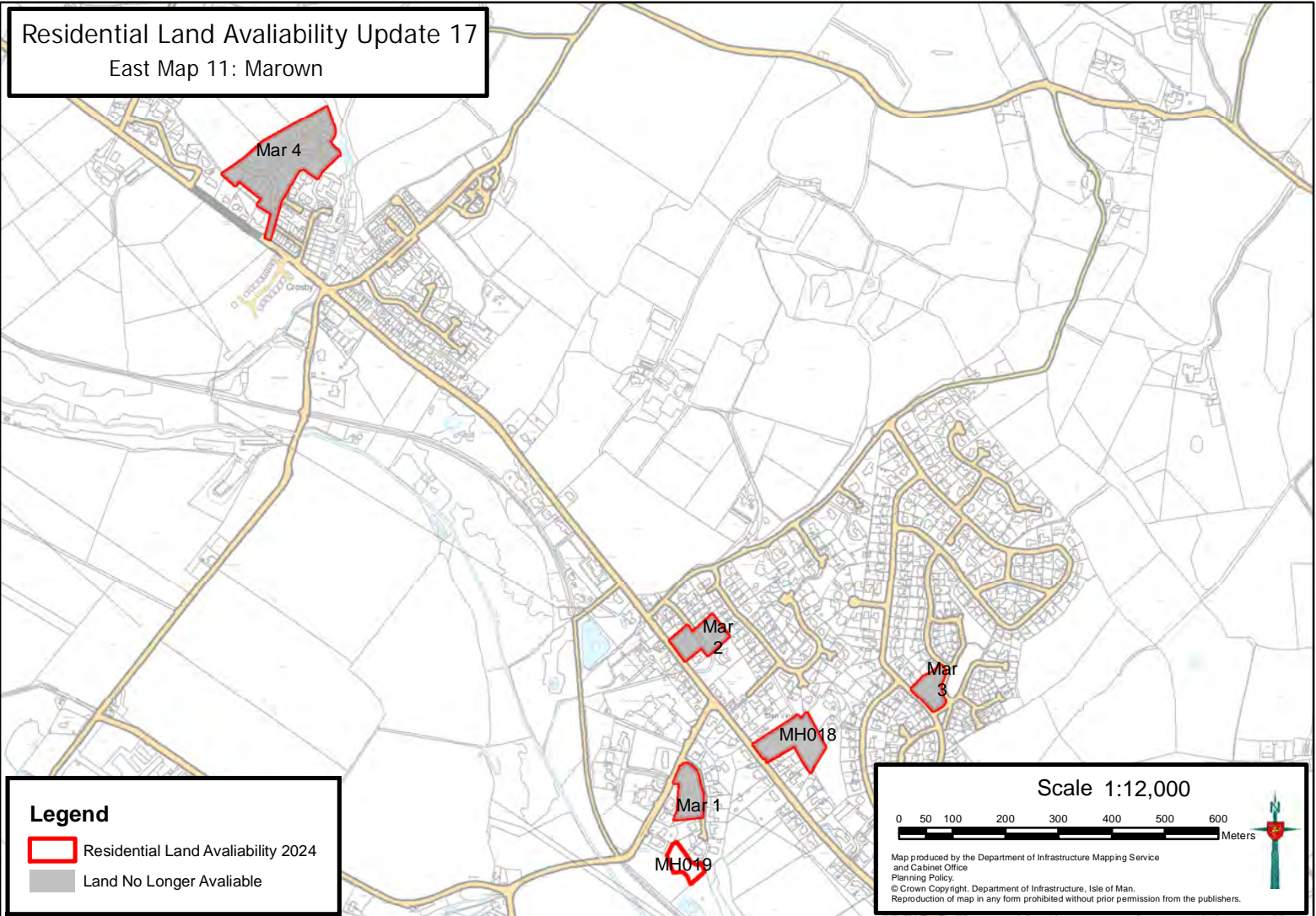


Map produced by the Department of Infrastructure Mapping Service and Cabinet Office Planning Policy.
© Crown Copyright, Department of Infrastructure, Isle of Man.
Reproduction of map in any form prohibited without prior permission from the publishers.





Residential Land Availability Update 17

East Map 11: Marown



Legend

-  Residential Land Availability 2024
-  Land No Longer Available

Scale 1:12,000

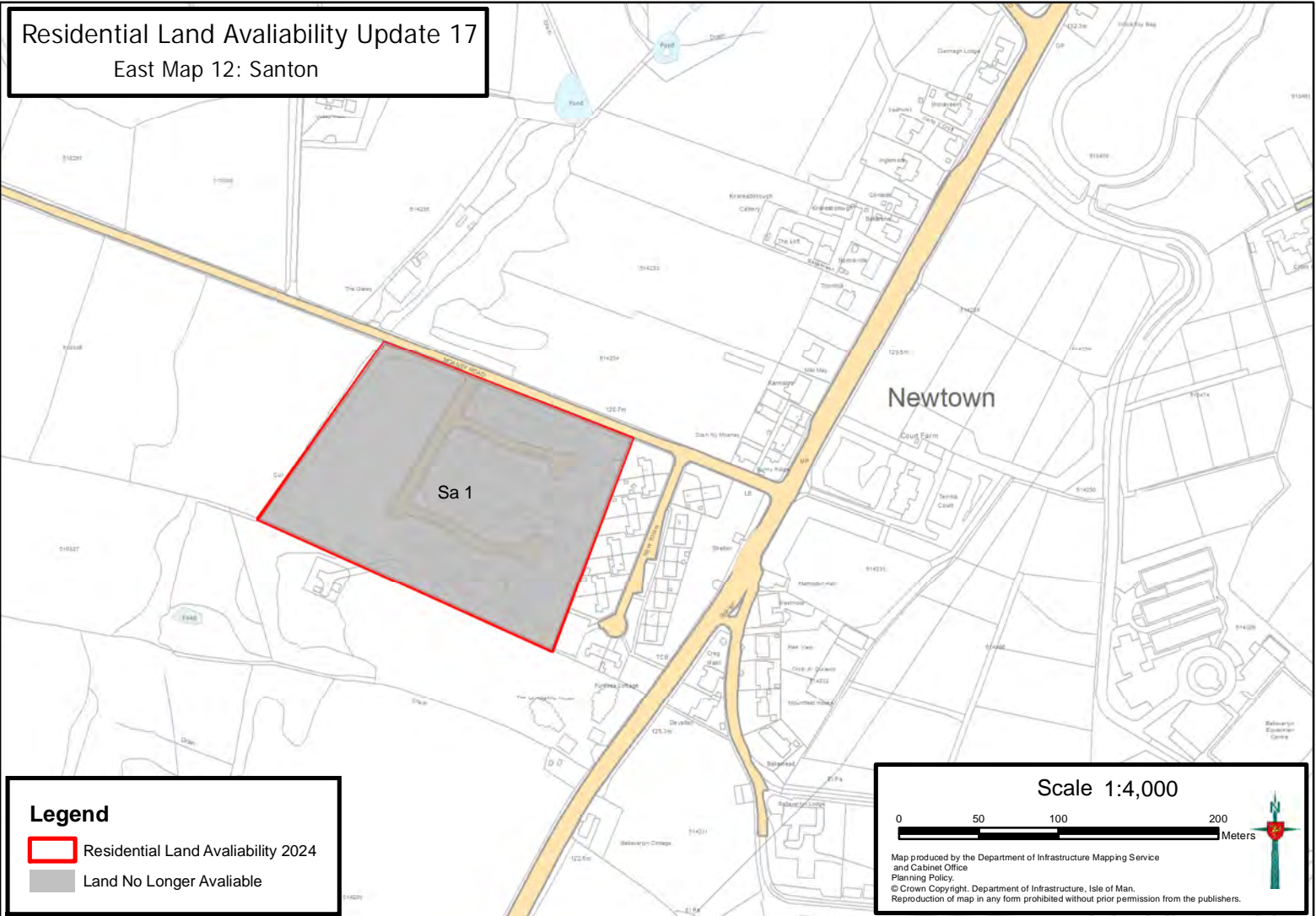


Map produced by the Department of Infrastructure Mapping Service and Cabinet Office Planning Policy.
© Crown Copyright, Department of Infrastructure, Isle of Man.
Reproduction of map in any form prohibited without prior permission from the publishers.





Residential Land Availability Update 17

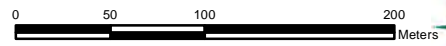
East Map 12: Santon



Legend

-  Residential Land Availability 2024
-  Land No Longer Available

Scale 1:4,000



Map produced by the Department of Infrastructure Mapping Service and Cabinet Office Planning Policy.
© Crown Copyright, Department of Infrastructure, Isle of Man.
Reproduction of map in any form prohibited without prior permission from the publishers.

