

Agri-Environment Initiatives

Handbook Briefing

Launching our New Initiatives 2021

6.30pm – 8.00pm



Isle of Man
Government

Reillys Ellan Vannin

Why are we doing this?

This meeting is for you “the industry” and
because you are the

custodians

of the Manx Countryside



**Isle of Man
Government**

Reillys Ellan Vannin

In 2016 I made a commitment to change the way agricultural support is delivered; particularly in relation to supporting active farmers and production, to ensure that economic activity is maximised and the processors, are viable.



The Agricultural Strategy Consultation which ran from 26th Feb'19 – 9th April'19 demonstrated strong support for active farming and the environment aspect of the new scheme; headage was discounted as an option.



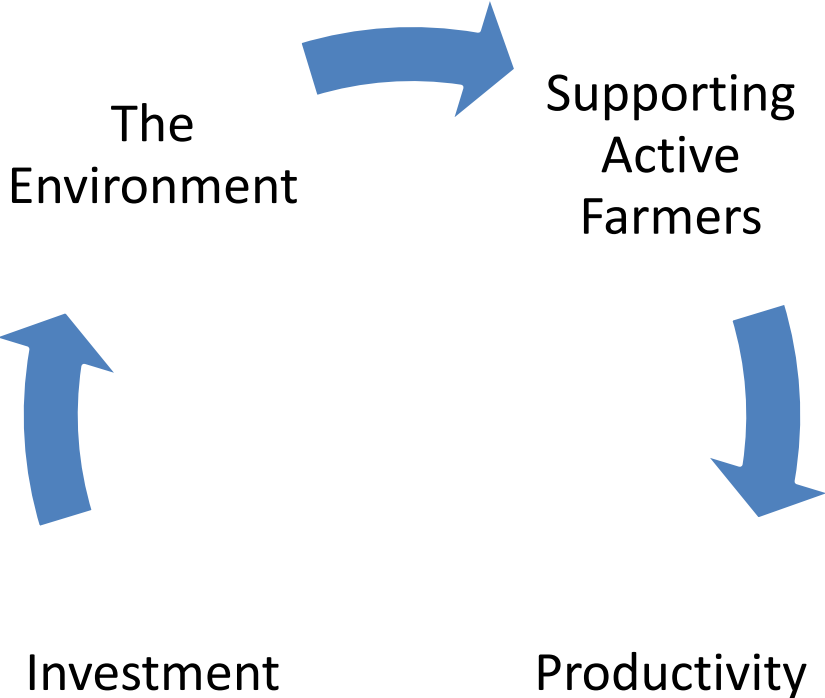
Isle of Man
Government

Reillys Ellan Vannin

Key Objectives



Department of Environment, Food and Agriculture

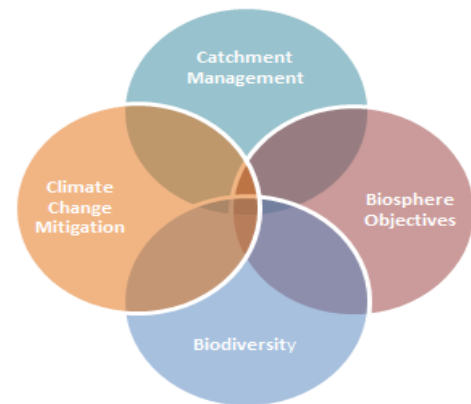


**Isle of Man
Government**

Reillys Ellan Vannin

Why Now?

- In preparation for the new scheme year
 - So the sector can start planning
- The scheme is already clearly laid out to embrace future environmental changes.
- It targets support towards those actively farming
- Supports Climate Change through;
 - Tree planting
 - Peat enhancement
 - More work on emissions required
- Bathing water quality
 - Catchment management
 - Slurry & Soil
 - Land Management



Developing a scheme for the future of the Isle of Man



Isle of Man
Government

Reillys Ellan Vannin

Journey

- 2008 - the single-farm payment model was introduced Countryside Care Scheme (CCS).
- 2016-2029) – Agricultural Development Scheme (ADS). Replacing the (CCS)
- 2020 Agri-Environment Initiatives Scheme.



Additional Annual £1 Million Budget

- Treasury agreed an enhanced budget of annual rolling £1M for the Agricultural Sector.
 - This funding was conditional on Agriculture delivering Environmental benefits.
 - The Agri-Environment handbook has been designed to deliver these goals.
 - Due to COVID-19 full acreage payment was made plus £700K from treasury spent on Capital Grants etc.



Department of Environment, Food and Agriculture

- The Agricultural Strategy is to assist you and your business.
 - This additional funding is for you as an active farmer to benefit from.
 - The Agri-Environment Scheme is to assist you to claim for additional funding.
 - You manage your businesses and the scheme has been set up for you to benefit from the scheme.
 - Unlike the current English proposals we have preserved a significant proportion of the area payment.



Isle of Man
Government
Reillys Ellan Vannin

The Environment

Providing support for targeted initiatives that produce conserved and cherished landscapes:

- Enhance biodiversity
- Sequester carbon
- Tree planting and Peat enhancement.
- Improve bathing water quality
- Reduce flood risk
- Address the land management components of the imminent Climate Change Action Plan.



Winter Fodder Crops



Payment for growing winter fodder crops e.g. forage rape, kale or turnips



Purpose: to provide cover and feeding areas for birds such as, yellowhammer, skylark, and flocks of finches, including linnet.



Isle of Man
Government
Reillys Ellan Vannin

Agri-Environment Handbook

- What does it look like?
- **The Creation of Desirable Transient Habitats (5/01b)**

Winter Stubbles

Purpose: To provide foraging and feeding areas for birds such as yellowhammer, skylark, flocks of finches and tree and house sparrows.

Schedule / Number
5/01b(i)

Payment Rate:

£58/acre

Minimum area 2.5 acres per farm

Maximum 20% of cereal acreage

Eligible land: Any cereal growing land in grass/crop rotation or where crops have been grown continuously. The area can be moved from field to field with rotations but not under sown. It may be necessary to exclude a field from the winter stubble option for a year if under sowing is essential. Forage Maize stubble is ineligible.

Management Conditions:

- After cereal crop has been harvested the stubble must be kept until 15th February the following year;
- Straw must be removed immediately after harvest;
- Do not burn residues;
- Do not under sow;
- Do not use herbicides, pesticides or fungicides between harvest and ploughing (i.e. while in stubble);
- Spread no more than 10 tonnes/ac of Farm Yard Manure (FYM), if necessary, but only from 15th February onwards;
- No slurry to be applied from harvest until after 15th February;
- FYM and Slurry MUST be incorporated into the soil within one day of spreading;
- It is acceptable to store manure on the field, but such middens must be more than 100m from ditches and watercourses.

Who will deliver?

DEFA to engage the services of a professional third party to implement specific agreed Agri-Environment Initiatives.

- This will be advertised out for any interested professional businesses to submit a tender application to run the scheme in conjunction with DEFA, to be funded out of the overall DEFA budget.
- DEFA will be the authorising body and maintain **full control** of the scheme.
- The successful business will carry out 1-2-1 on farm consultations to assist with the completion of application forms and offer professional advice at no cost to the farmer; i.e. assistance with
 - KPIs
 - Benchmarking
 - Creation of Management plans



Isle of Man
Government

Reillys Ellan Vannin

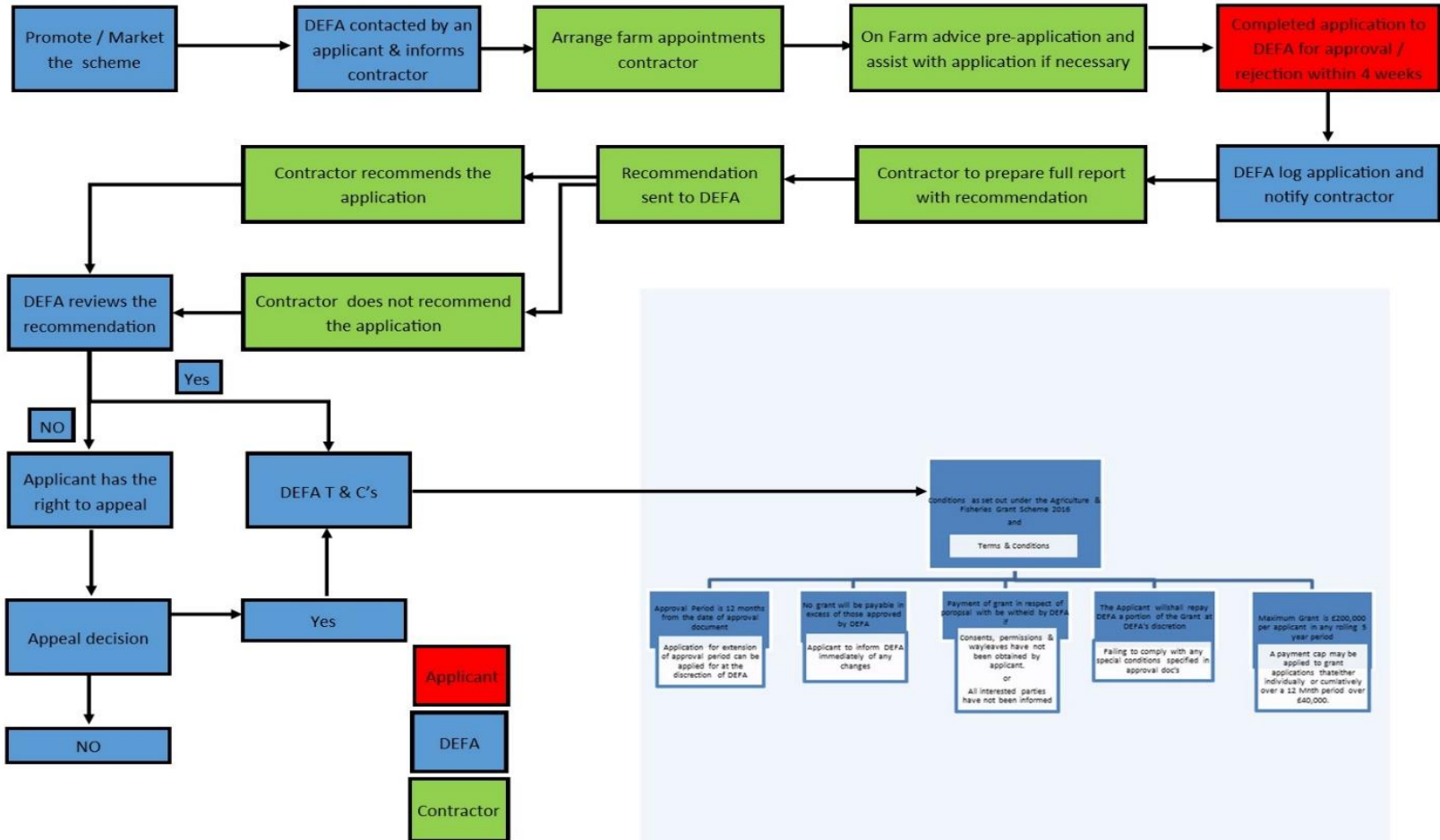
Application Process

- Application forms and guidance notes will be made available for each initiative and there will be a dedicated webpage for the Scheme.
- Each initiative will be listed on the webpage and you will be guided through the process which will be the same as the AFGS process.
- Online applications will be encouraged.
- Paper application forms will be made available on request.

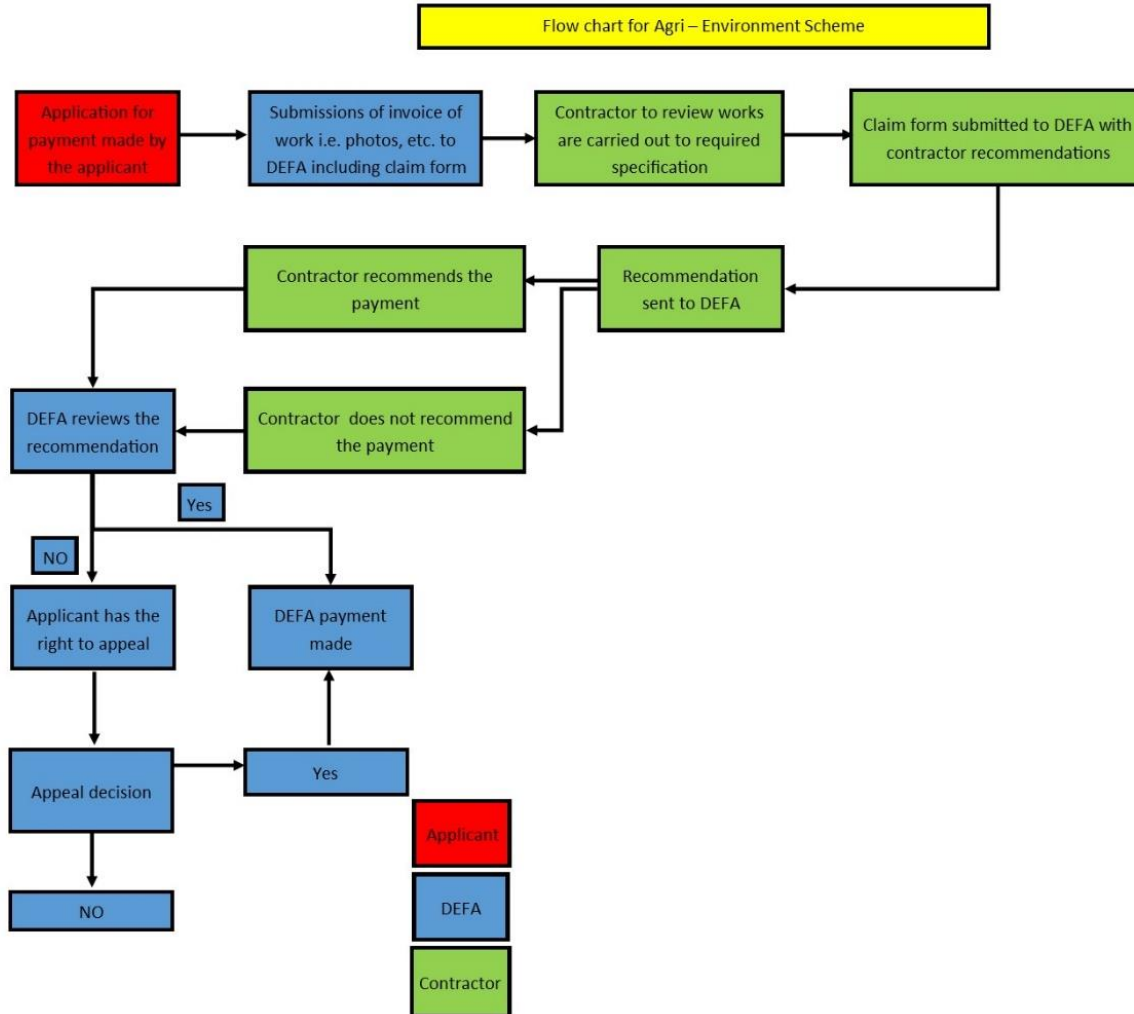
Department of Environment, Food and Agriculture

How this will work

Flow chart for Agri – Environment Scheme



Claim forms and payments



Knowledge Exchange Programme (KEP)

DEFA will be employing the services of a Agricultural Consultant/s to deliver KEP

– Suitable Agricultural Consultants will be encouraged to apply to deliver the programme and will be selected through a tender process in line with Government Financial Regulations.

- KEP will be a four year programme, separated into two phases involving four development farms.



Road Shows

- Roadshows are to be held around the Island
 - more detail regarding the initiatives will be available for individual discussion at the roadshows.
- When would you like these to take place?
- What location/venue would you like these to be held?



Isle of Man
Government

Reillys Ellan Vannin

Department of Environment, Food and Agriculture

What does this mean for me?

What you get now

What you will get

100 acre farm	2020/2021	2021/2022		
	Flat rate	Flat rate	Active Farmer initiatives	Total
Dairy	£78.20	£64.52	£13.30	£77.82
Beef	£78.20	£64.52	£13.30	£77.82
Sheep	£78.20	£64.52	£13.30	£77.82
Arable	£78.20	£64.52	£11.30	£75.82



Isle of Man
Government

Reillys Ellan Vannin

Thank you!

Questions?



**Isle of Man
Government**

Reilys Ellan Vannin