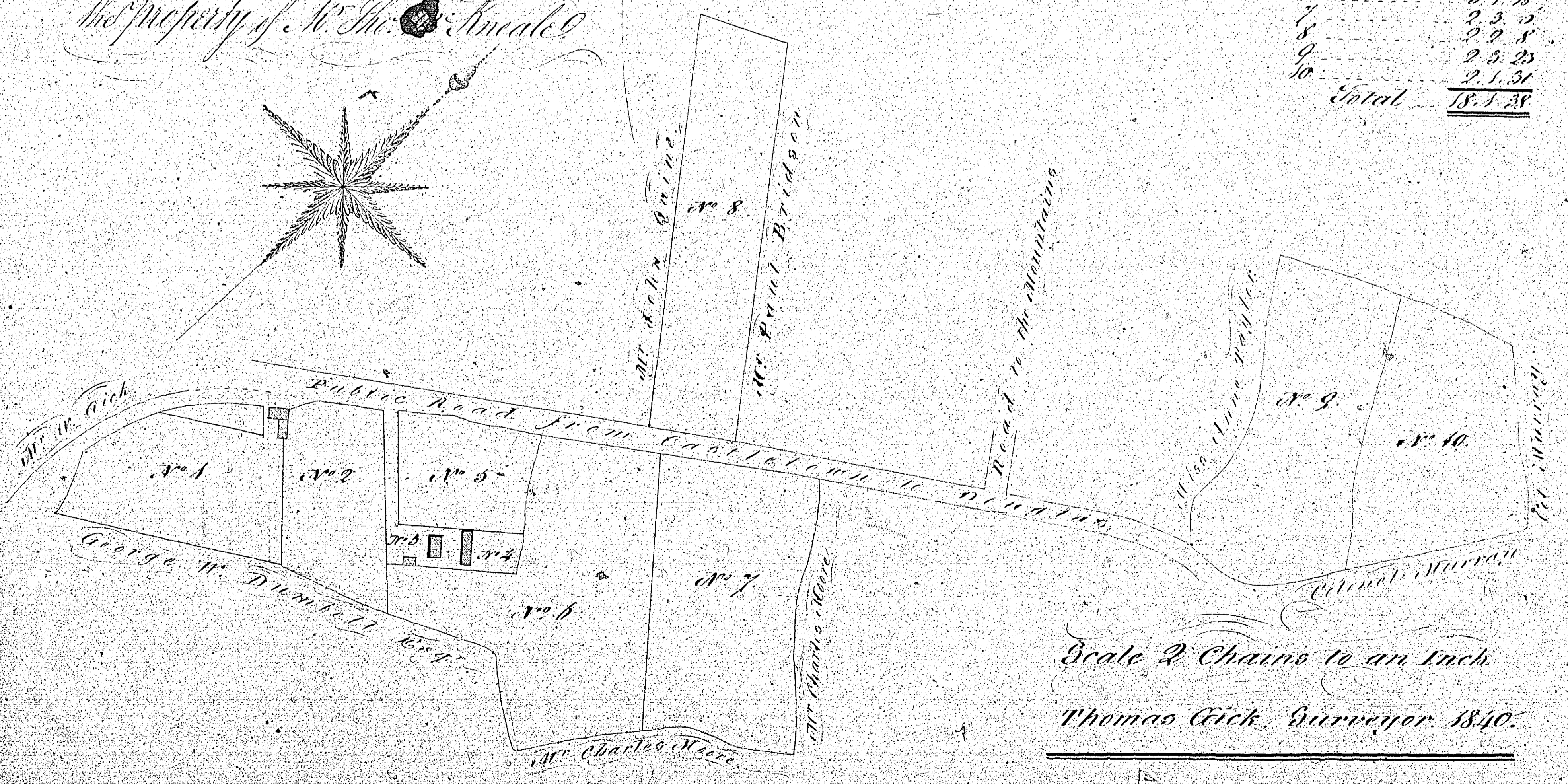


Plan and Survey  
 of the Estate of the Court,  
 in the Parish of St. Anne, Isle of Man.  
 the property of W. M. & A. Ansell.

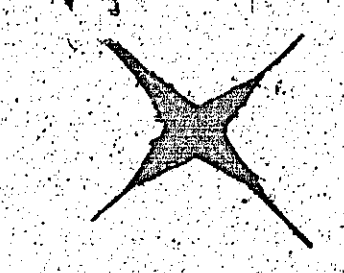
Contents

No.	A. R. P.
1 Contains	1. 2. 28
2	1. 4. 13
3	1. 6
4	1. 11
5	1. 0
6	5. 1. 18
7	2. 3. 2
8	2. 2. 8
9	2. 5. 23
10	2. 1. 31
Total	<u>18. 5. 38</u>

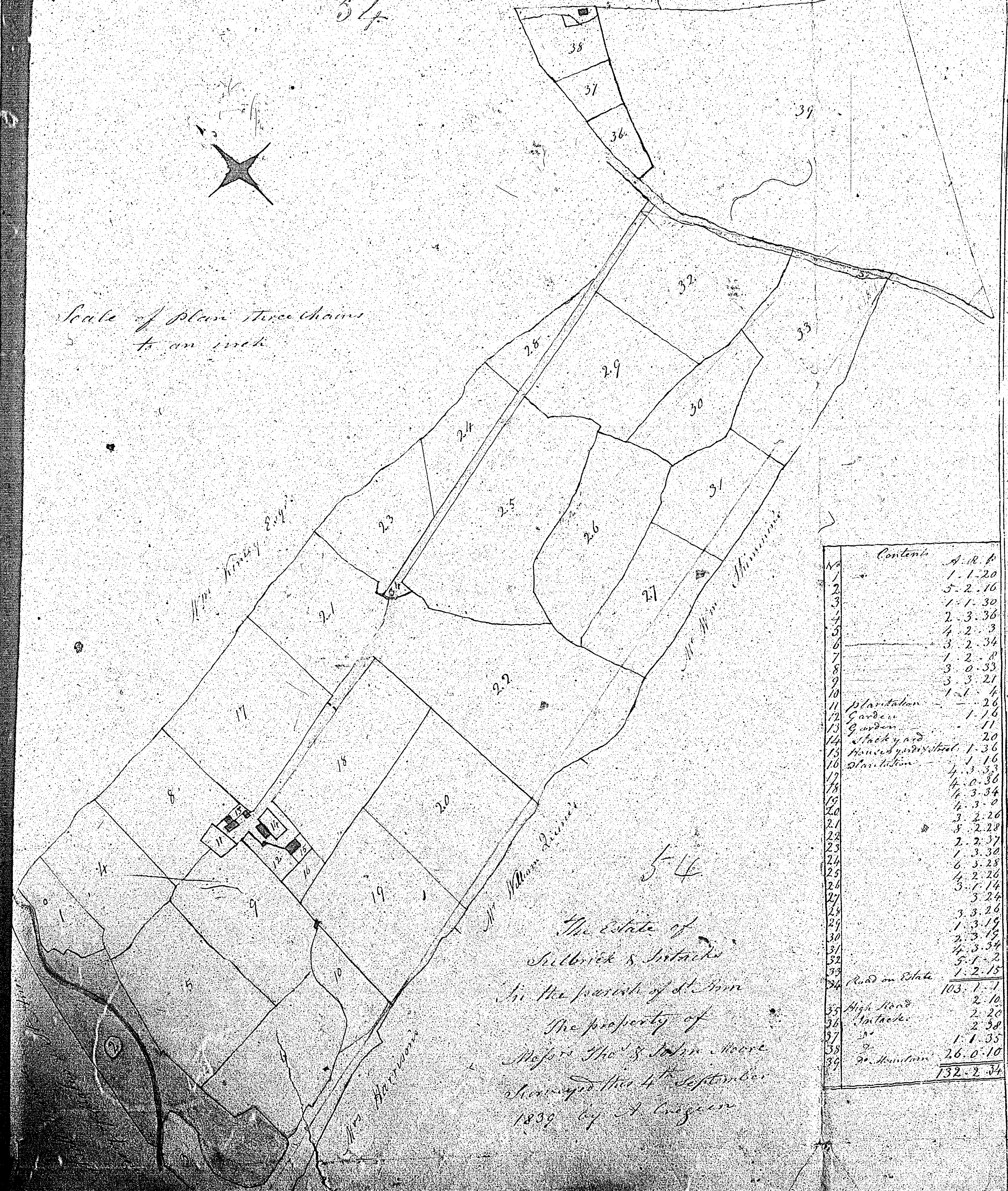


Scale 2 Chains to an Inch  
 Thomas Gick, Surveyor. 1810.

54



Scale of Plain Three chains  
to an inch



The Estate of  
Silbrick & Intacks  
in the parish of St. Ann  
The property of  
Messrs Tho<sup>s</sup> & John Moore  
Surveyed this 4<sup>th</sup> September  
1839 by A. Crozier

No.	Contents	A. R. P.
1		1.1.20
2		5.2.16
3		1.1.30
4		2.3.36
5		4.2.3
6		3.2.34
7		1.2.8
8		3.0.33
9		3.3.21
10		1.1.4
11	Plantation	2.2
12	Garden	1.16
13	Garden	1.11
14	Stack yard	2.0
15	House & garden	1.36
16	Plantation	1.16
17		4.3.36
18		4.0.36
19		4.3.34
20		4.3.0
21		3.2.26
22		8.2.28
23		2.2.37
24		1.3.30
25		6.3.28
26		4.2.26
27		3.1.14
28		5.2.4
29		3.3.26
30		1.3.19
31		2.3.19
32		4.3.34
33		5.1.2
34	Road on Estate	1.2.15
35	High Road	103.1.1
36	Intacks	2.10
37		2.20
38		2.58
39		1.1.35
	So. Intacks	26.0.10
		132.2.34



Contents	
1	4 R. 4
2	4 0 7
3	3 1 3
4	2 1 22
5	2 3 6
6	4 1 15
7	3 0 30
8	3 1 1
9	3 0 22
10	4 3 26
11	2 3 0
12	3 3 30
13	2 0 12
14	1 3 5
15	Half of Encumbr 2 22
16	2 3 22
17	1 1 20
18	1 3 0
19	1 2 16
20	3 6
21	Stackyard &c 32
22	Garden 20
23	House Street &c 1 14
24	47 1 1
25	Ballachury 2 0 10
	2 1 26
	4 1 36
25	Church field &c 3 4
	not included
Total	52 2 1

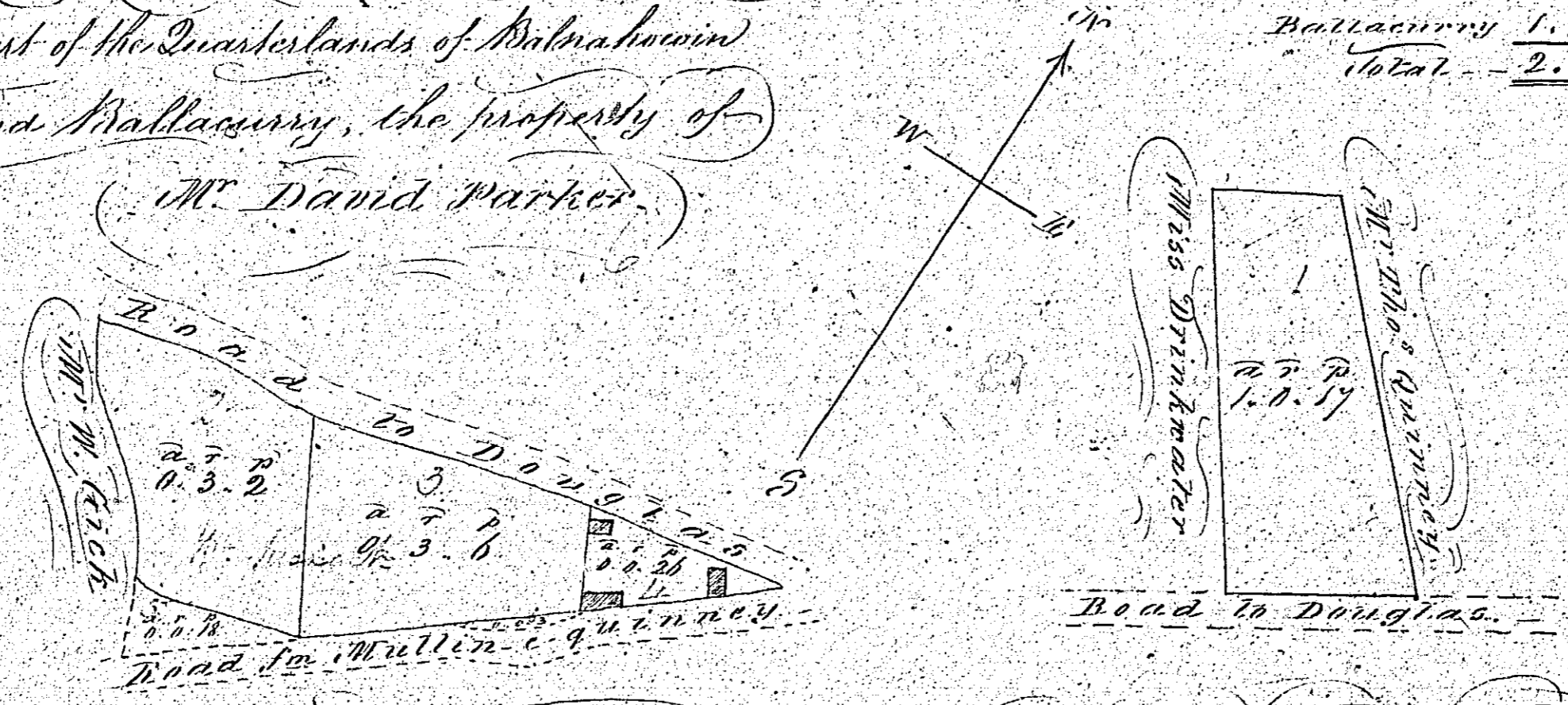
Scale three chains to an inch

The Estate of Ballachury  
 In the parish of St. Ann  
 The property of  
 Mr. Thomas Coats  
 Surveyed the 23<sup>rd</sup> July  
 1839 by A. Cresser

*Plan of detached premises  
in the Parish of Saint Anne, Isle of Man,  
part of the Quarterlands of Malrahouin  
and Mallacurry, the property of  
Mr. David Parker.*

*Contents*

Balnahowin	0.3.2
D'	0.3.8
D'	0.0.26
D' Baacurra	0.0.18
D' de	0.0.3
Ballacurry	1.0.17
<b>Total</b>	<b>2.3.32</b>



*Scale 2 Chains to an Inch.*

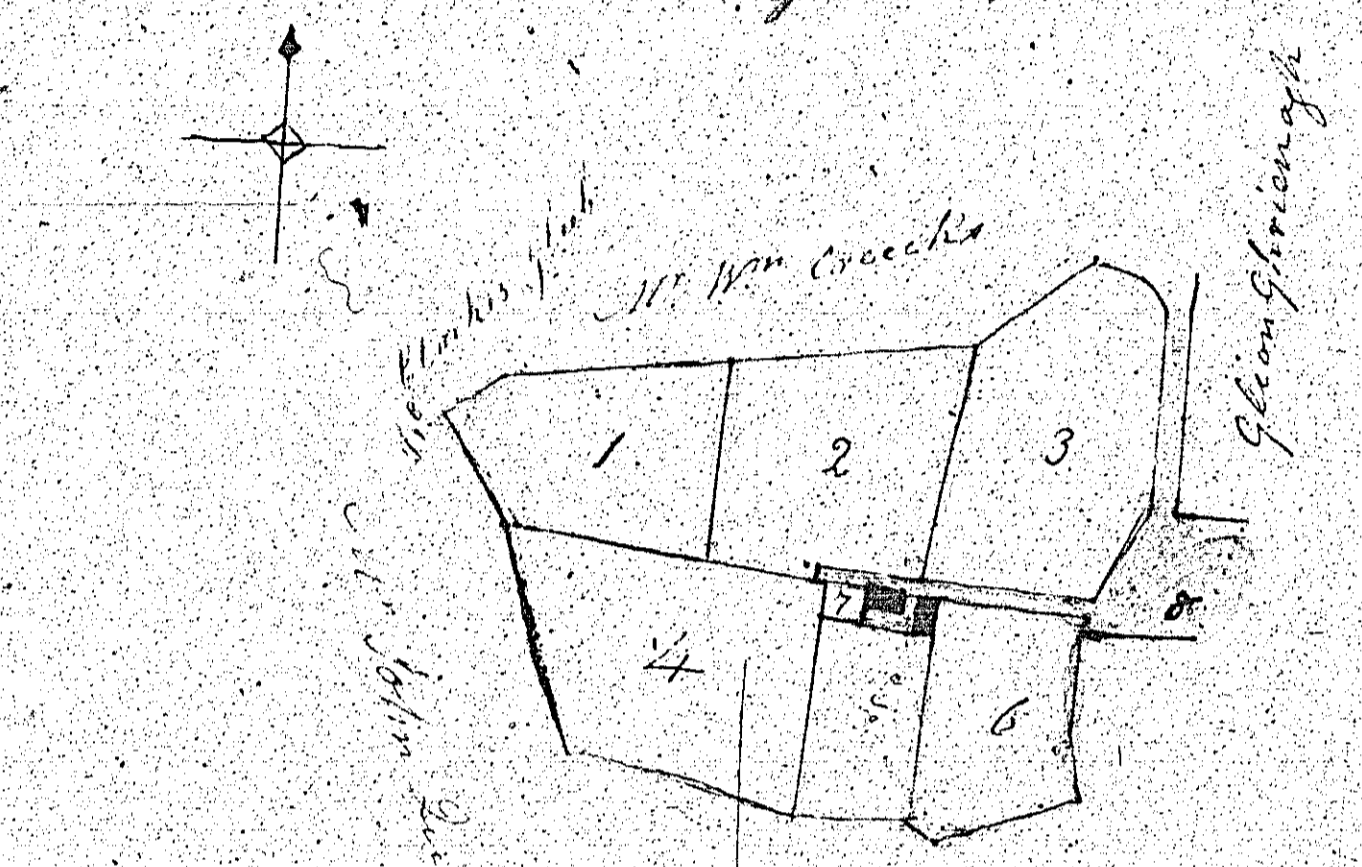
*Thos. Kirk Surveyor 1839.*

*Notes  
56*

ISLE OF MAN GOVERNMENT: GENERAL REGISTRY  
TITHE PLANS: PARISH OF SANTON  
Original coloured (decorative), faint 1:30



57



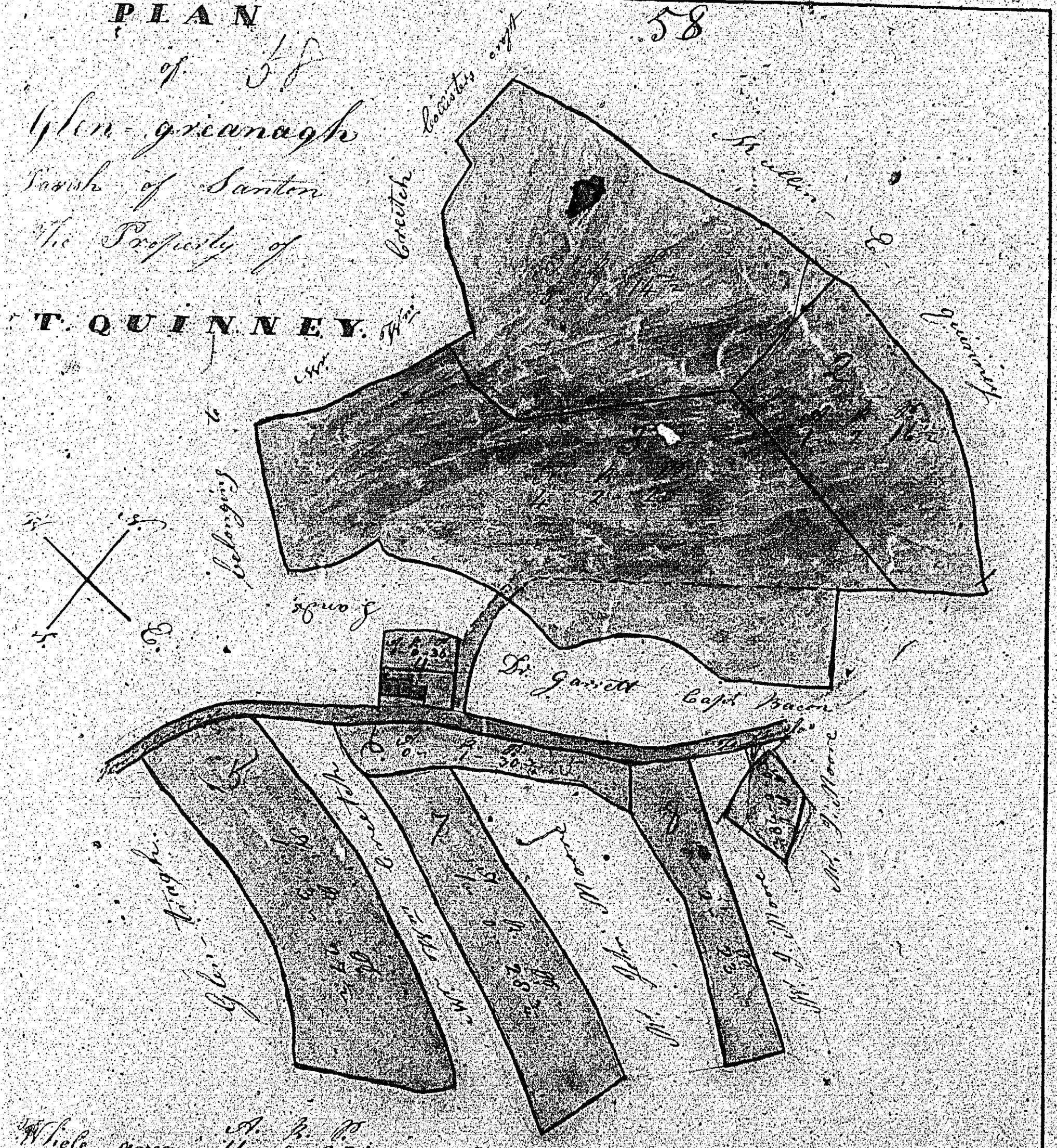
Scale 5  
 Three chains to an  
 inch  
 part of Glenharrow  
 The land of John Quinn  
 of the Hill in the parish  
 of St. Ann surveyed  
 this 4<sup>th</sup> July 1839  
 By A. Creegan

No.	Contents	A. R. P.
1		1.0.11
2		1.0.30
3		1.1.35
4		1.1.30
5		2.15
6		3.5
7	Road House	32
8	Garden Yard	1.20
	$\frac{1}{2}$ of Carr	1.20
	Total	7.0.18

PLAN

of 58  
Glen-grianagh  
Parish of Santon  
The Property of  
**T. QUINNEY.**

Advised  
58



Whole area  $11. 0. 25. 2$

Scale of Chains two to an Inch

Copied by John Greig 4th Decr 1840