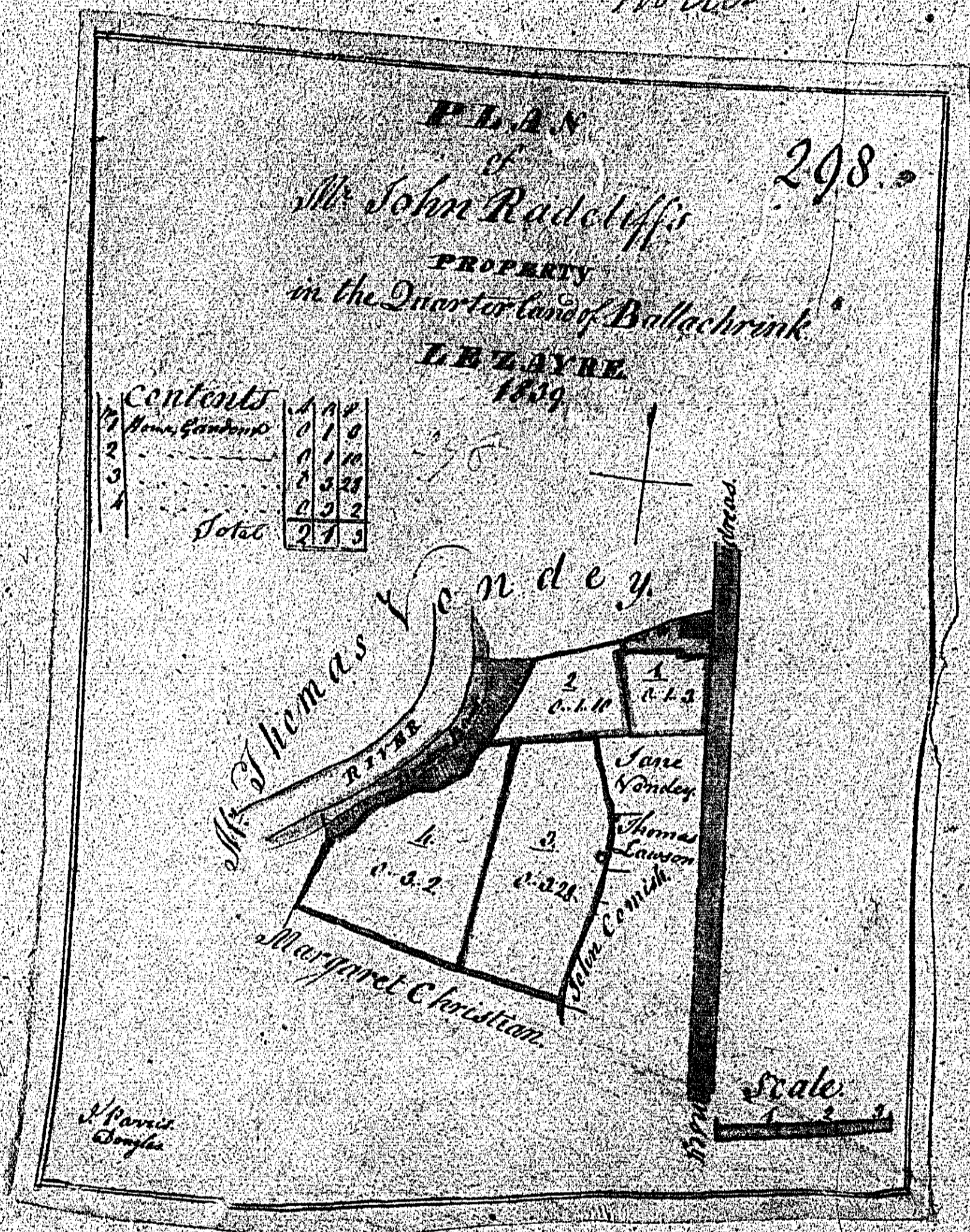




Noticed



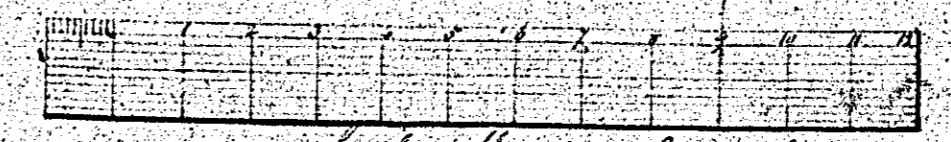
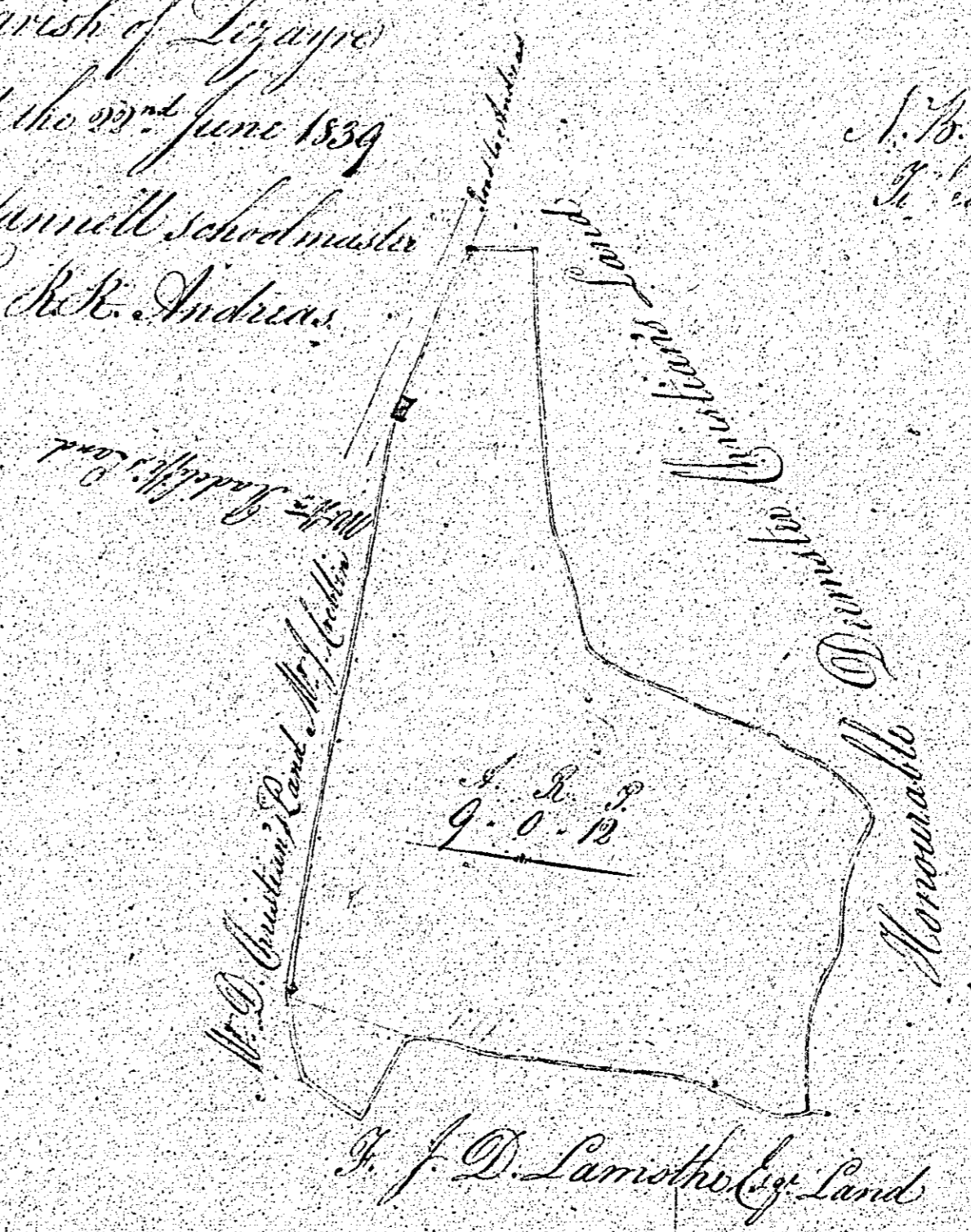
2-27  
2-2  
0-29  
16-2  
-27  
-32  
3-3  
3-10  
2-10  
3-3  
-2  
-2  
3-22  
2-15  
-22  
1-15  
1-1  
1-30  
2-20  
2-20  
2-5  
2-12  
-30  
2-15  
1-16  
3-19  
3-30  
3-15  
2

Not used

299.

A  
Map and Survey  
of Bullard's Liff Surrage  
the property of  
Tho: Radcliffe  
in the Parish of Lissaye  
Surveyed the 27<sup>th</sup> June 1859  
by John Cannell Schoolmaster  
St. St. Andrew.

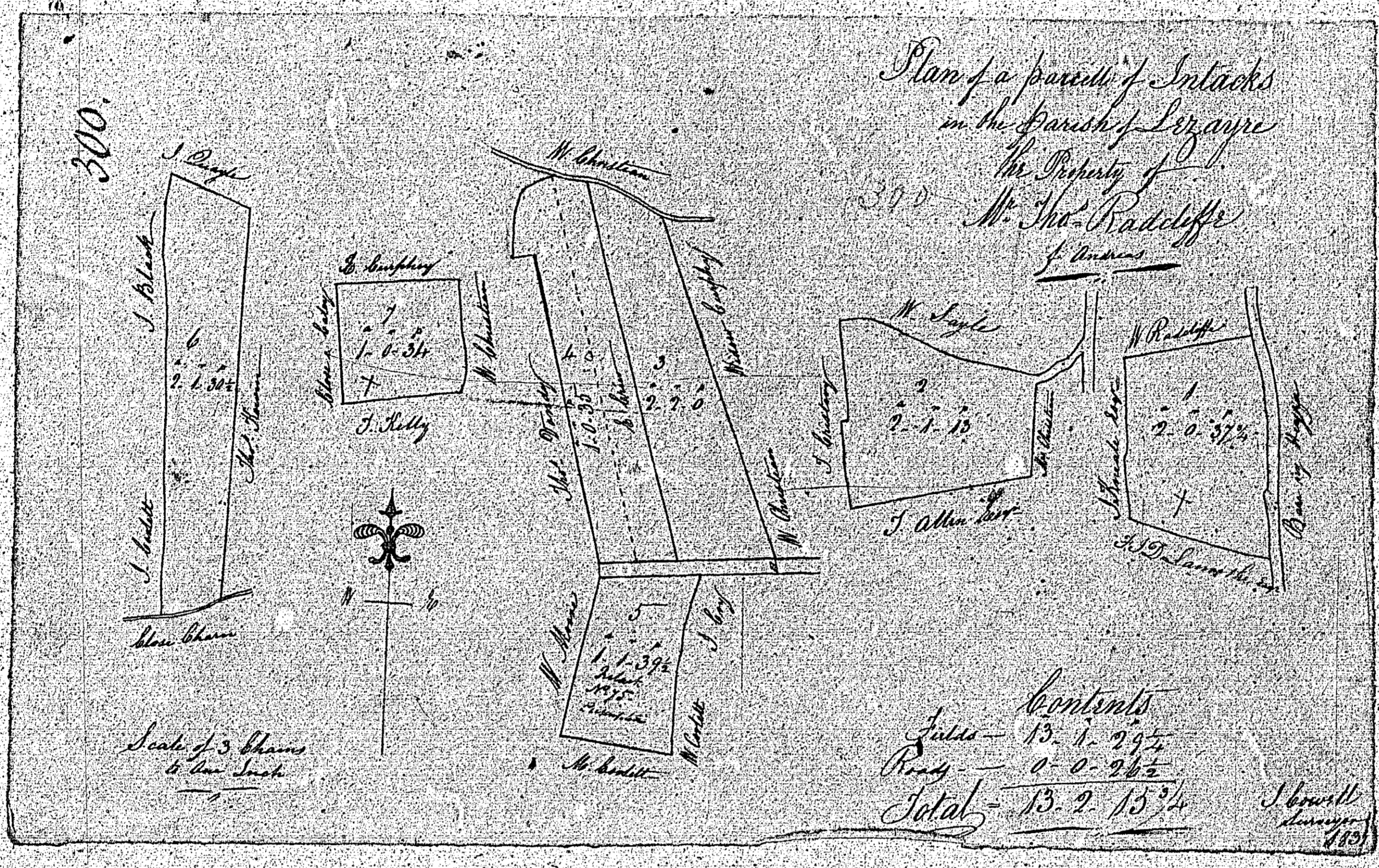
S. B. This meadow is only  
to be mowed once in three years



Scale 5 Quirrs to the inch

2	3
2	2
0	2
12	12
1	12
1	32
3	3
3	12
2	10
3	2
2	2
1	2
3	22
2	15
1	20
1	15
1	30
2	20
2	20
2	5
2	12
2	12
1	16
3	19
3	30
3	19
2	2

Not used



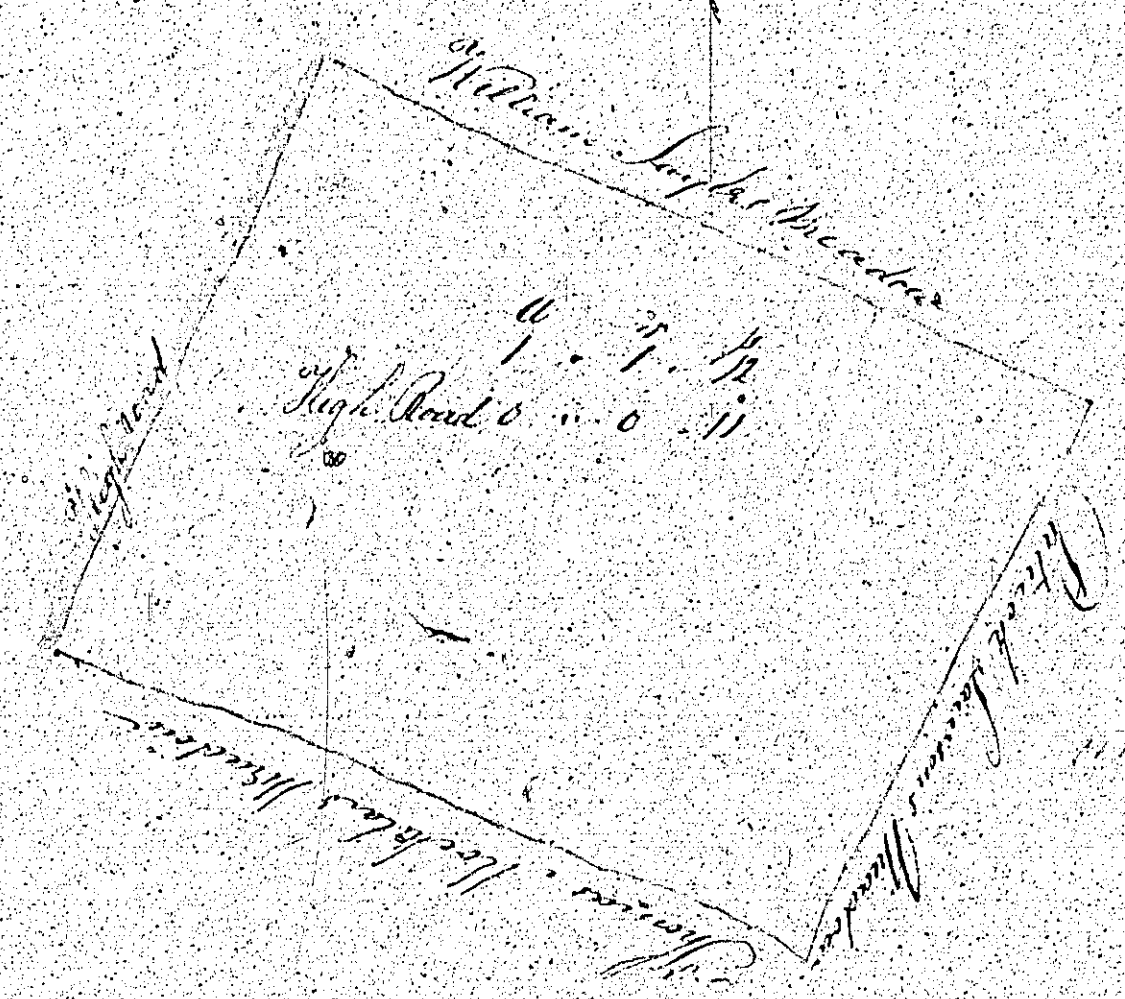
ISLE OF MAN GOVERNMENT: GENERAL REGISTRY  
TITHE PLANS: PARISH OF LEZAYRE

Original monotone

1:30

Map and Survey of a meadow part of Close  
Chisen in the parish of Lymington the Property of  
Lynn Bate Esq of Andover by John Smith

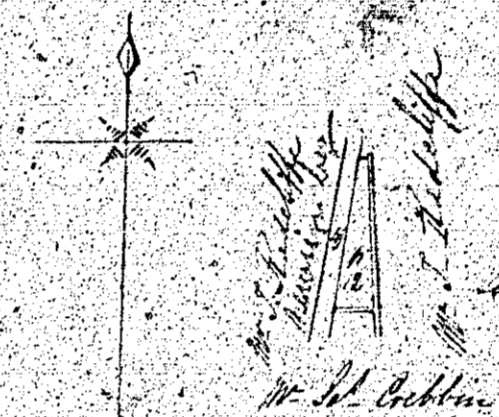
301.



South of the Close to the Sea

2 27  
2 28  
0 29  
1 30  
2 31  
3 32  
4 33  
5 34  
6 35  
7 36  
8 37  
9 38  
10 39  
11 40  
12 41  
13 42  
14 43  
15 44  
16 45  
17 46  
18 47  
19 48  
20 49  
21 50  
22 51  
23 52  
24 53  
25 54  
26 55  
27 56  
28 57  
29 58  
30 59  
31 60

302.



Course 0-0-10  
Dist 0-0-4  
Addum 0-0-0

This and Survey of an  
lot in the parish of  
Coyne the Property of

Mr. William Fardiffe  
As above

Lot of 3 Chains to an Inch

Surveyed by  
John Pease  
1840

3-27
2-2
0-27
1-0
1-27
1-32
3-5
3-10
2-10
3-5
2-12
1-3
3-22
1-10
1-24
1-15
1-15
1-30
2-20
2-20
2-5
2-12
1-30
1-12
1-15
1-15
3-19
3-30
3-12
2-6