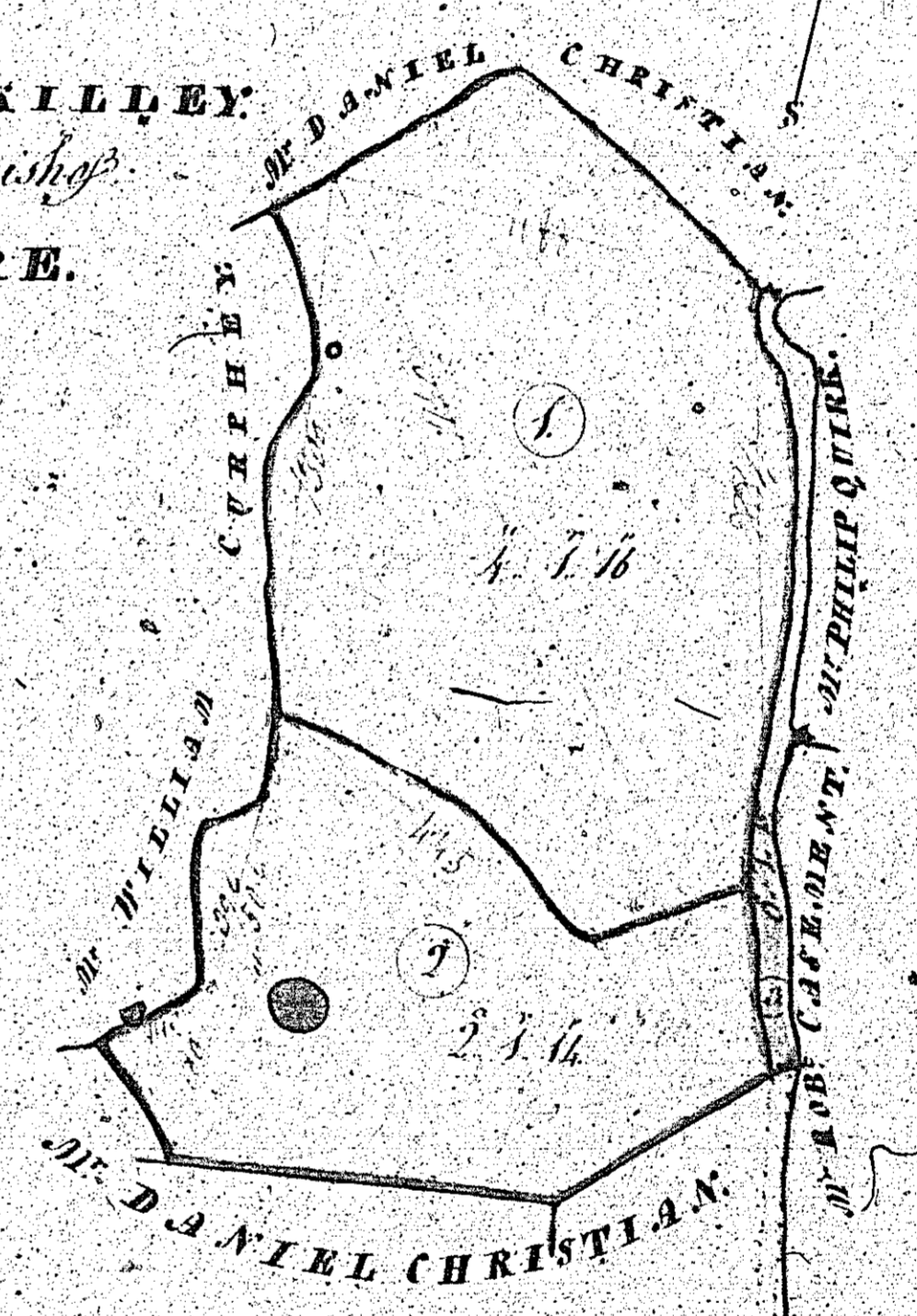


PLAN  
 of  
 CRONK. NOO  
 part of the  
 QUARTERLAND of BALLEL.  
 The property of  
 MISS MARGARET KILLEY  
 Lying in the Parish of  
 LEZAYRE.  
 1839.

CONTENTS

No. 1 & 2 Two Fields	5	2	50
3 The Road	2	1	10
Total	7	0	60



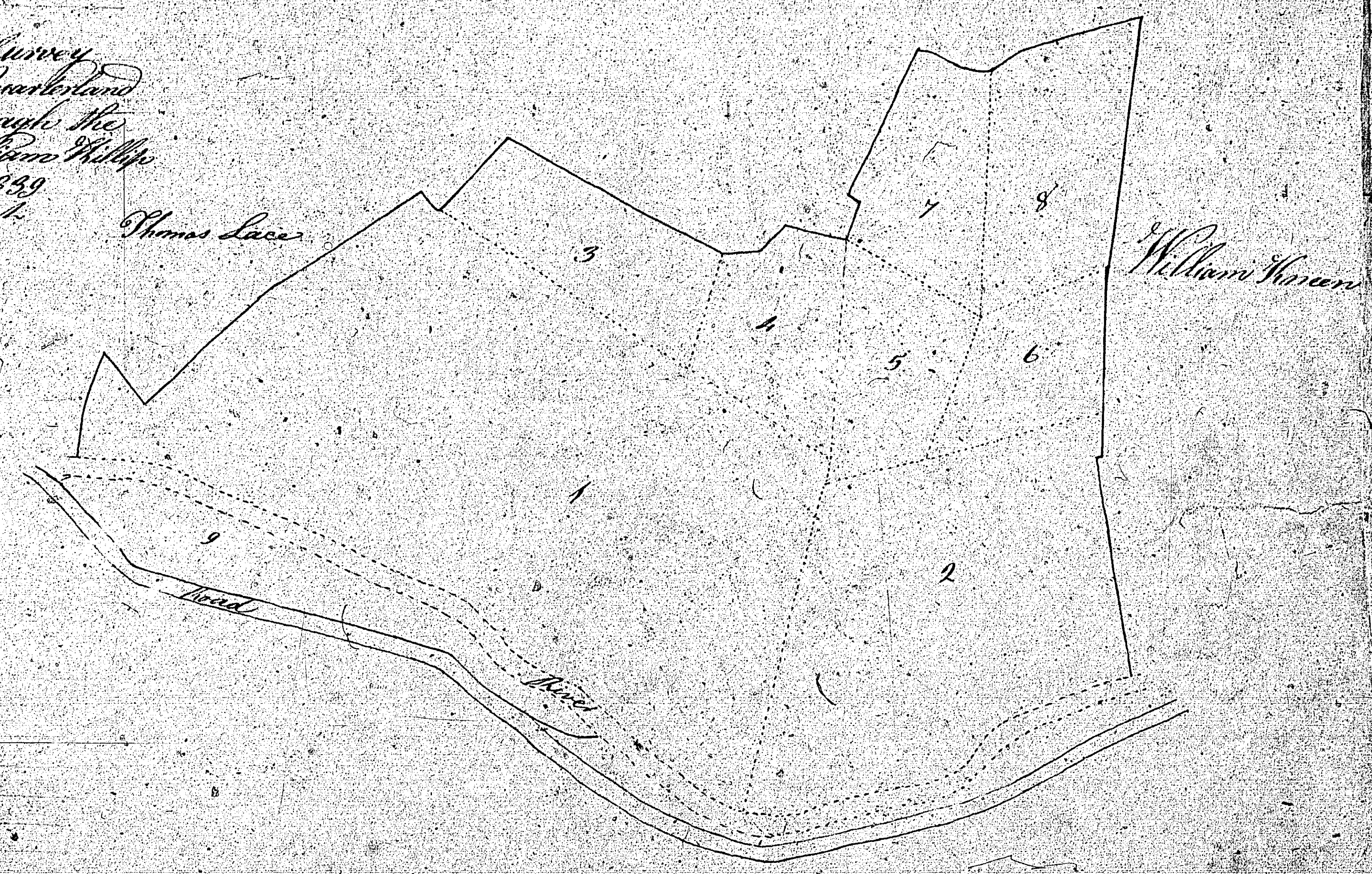
SCALE of CHAINS

Surveyed by J. H. ...  
 and the ...

*Lezayre*  
*A Plan and Survey*  
*of a part of the Downland*  
*of the Manx Islands the*  
*property of William Haines*  
*taken May 3<sup>rd</sup> 1839*  
*by Thos. Lacey*

*William Haines*

226



*Contents*

<i>No.</i>	<i>A.</i>	<i>R.</i>	<i>P.</i>
1	25	2	13
2	12	1	31
3	3	3	2
4	2	3	2
5	2	1	21
6	3	1	39
7	2	3	56
8	1	0	1
9	2	2	33

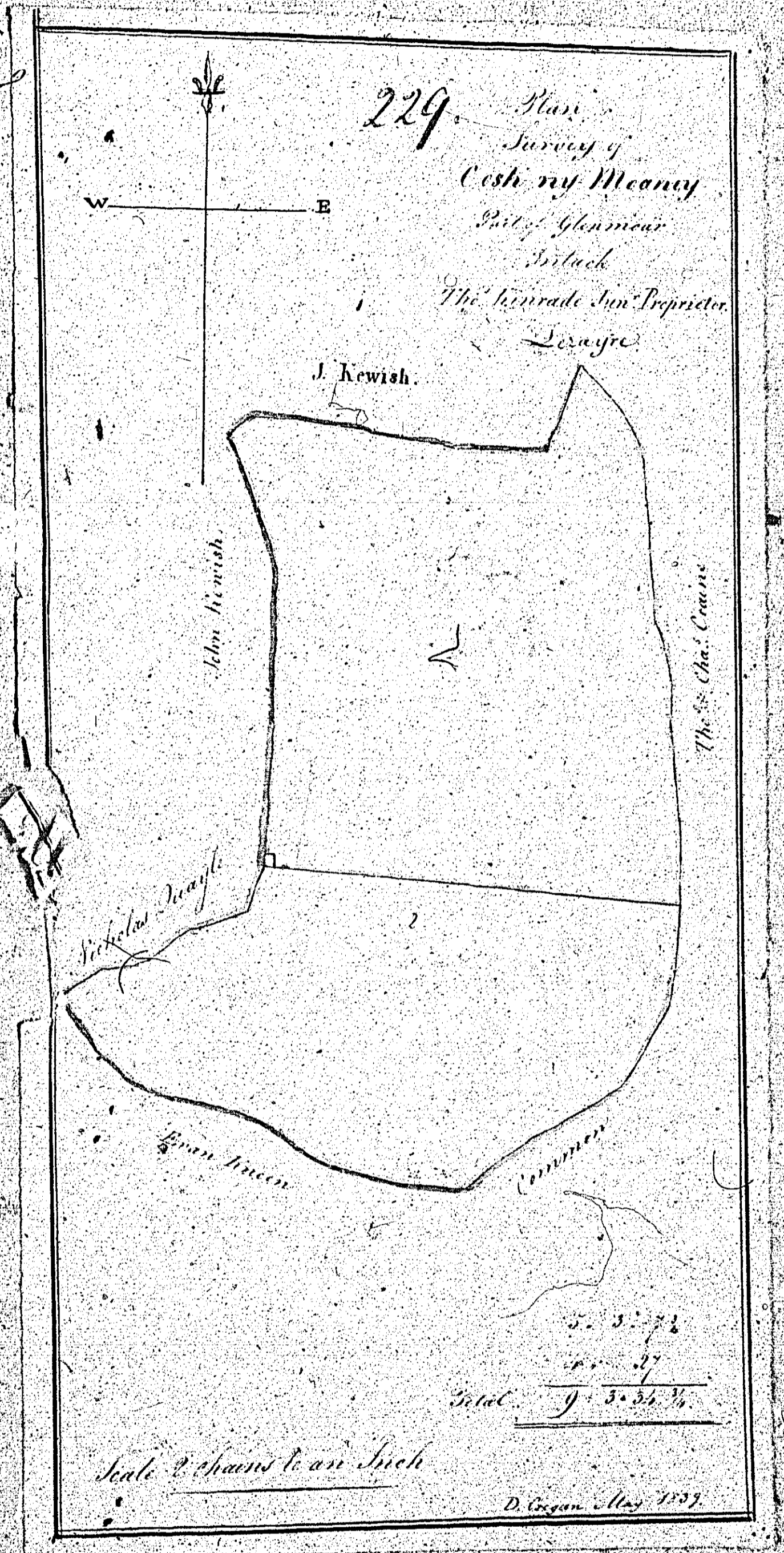
ISLE OF MAN GOVERNMENT: GENERAL REGISTRY

TITHE PLANS: PARISH OF LEZAYRE

Original monotone

1:30





END OF VOLUME