

41

Part of Cutchogit Quarterland
Belongs to the Property of
Mr John Cowley
By Deed Dated Aug 15th 1780

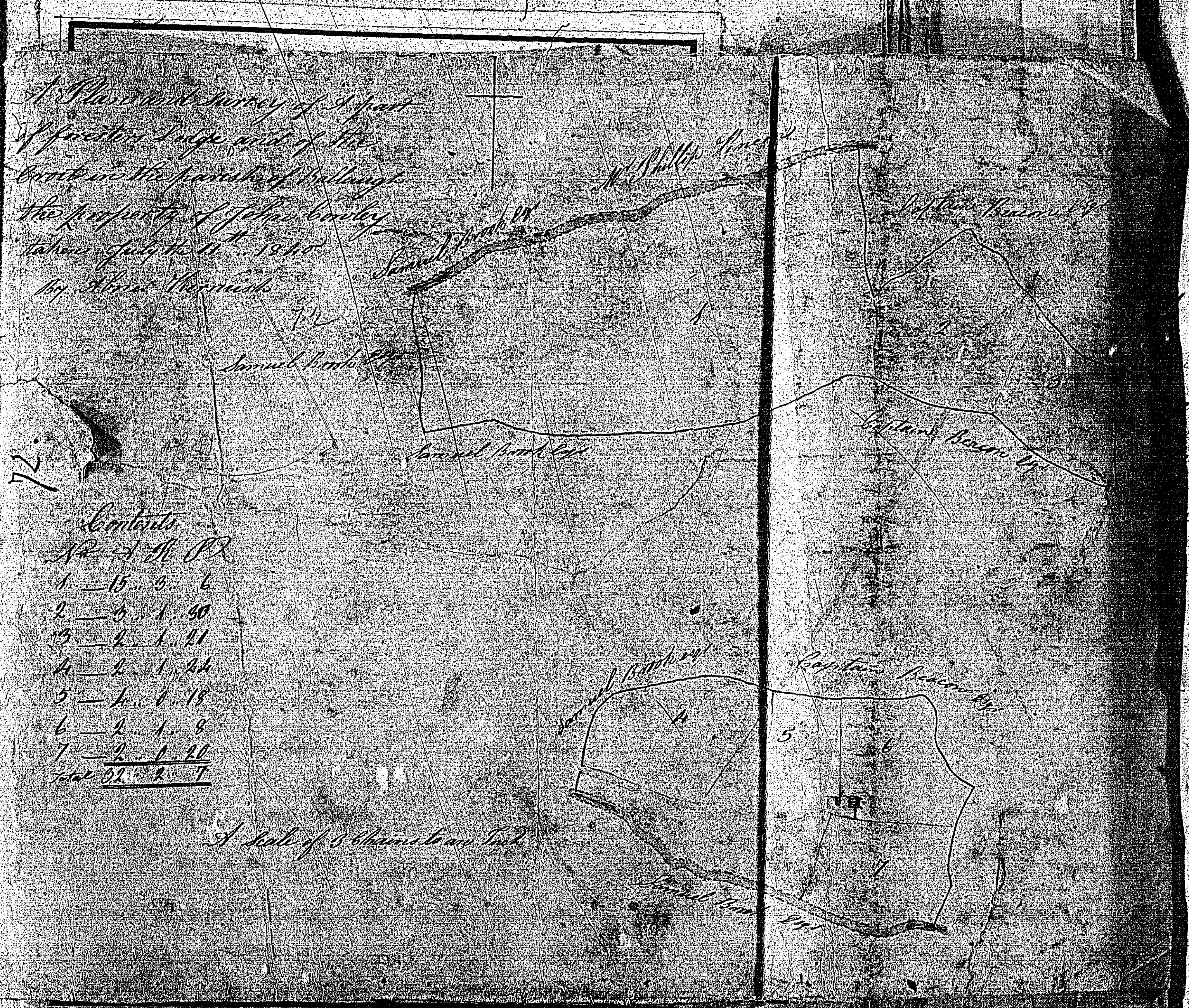
C

N	A	R	P

C

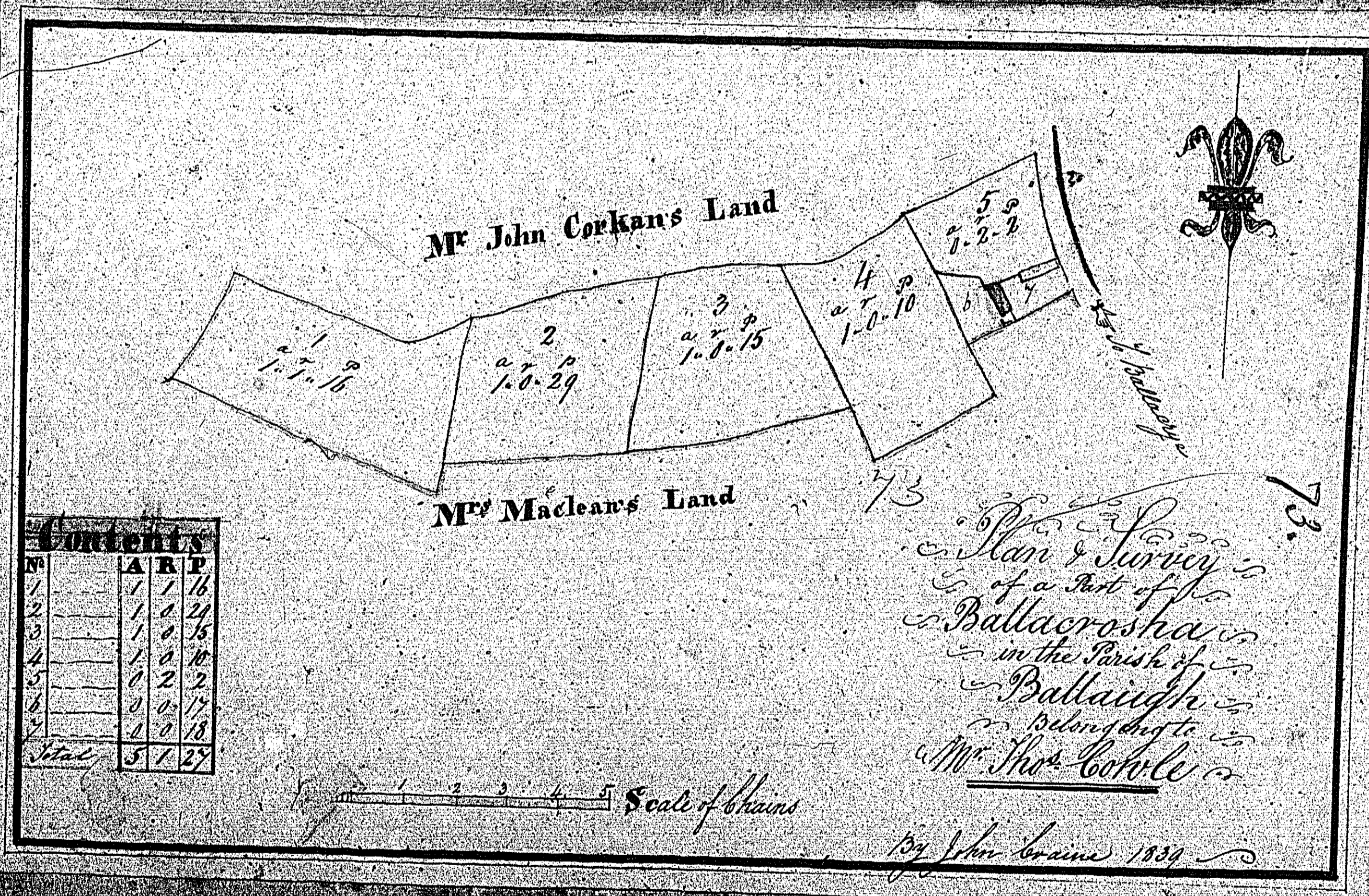
Sheet 30

A Plan and Survey of a part
of several large and of the
tract in the parish of Ballinacorney
the property of John Conroy
taken July the 11th 1840
by John Wrenn



Contents

No.	Acres	sq. Rds.	sq. Poles
1	15	0	6
2	5	1	50
3	2	1	21
4	2	1	24
5	1	1	18
6	2	1	8
7	2	1	26
Total	32	2	77

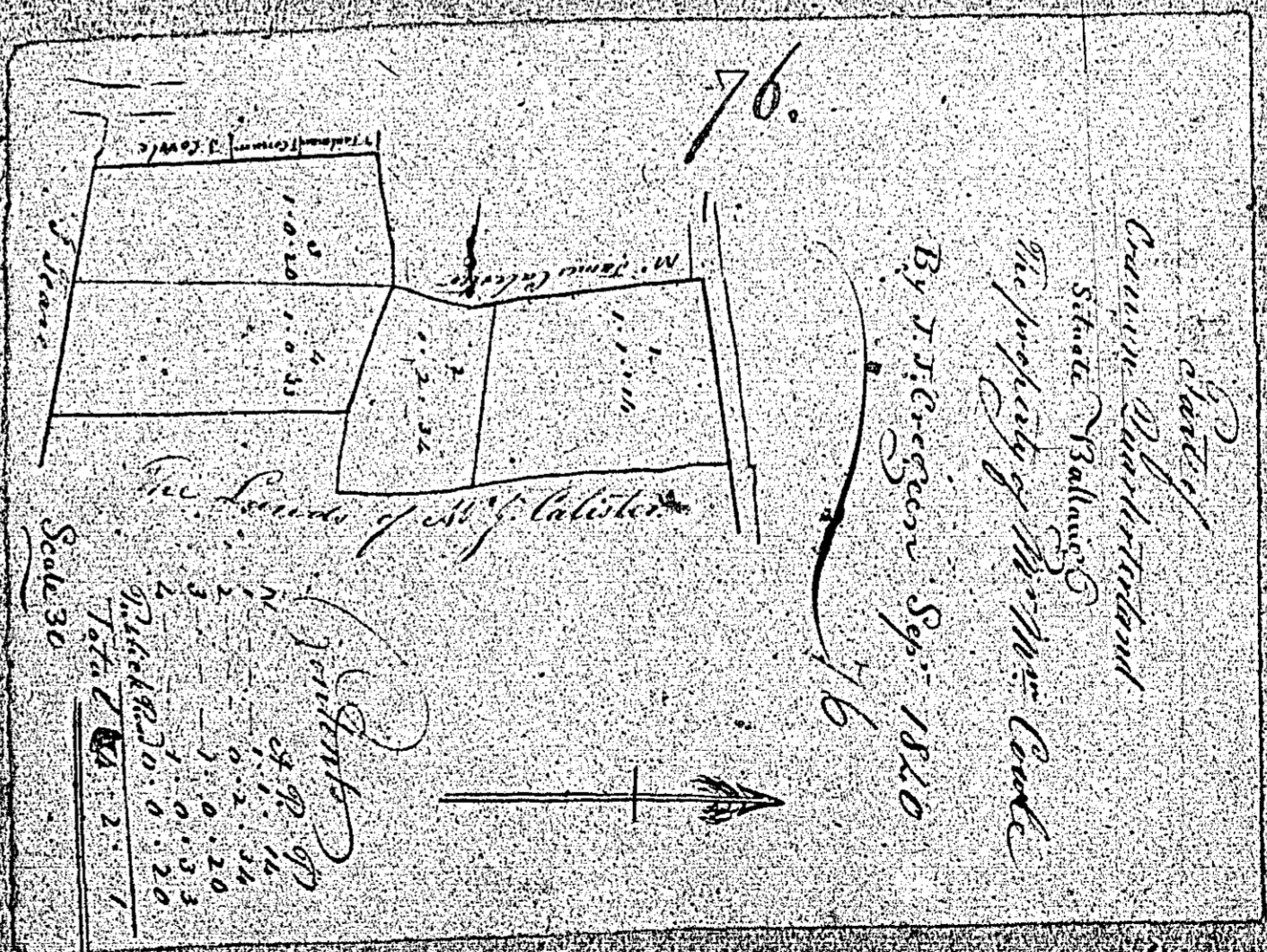
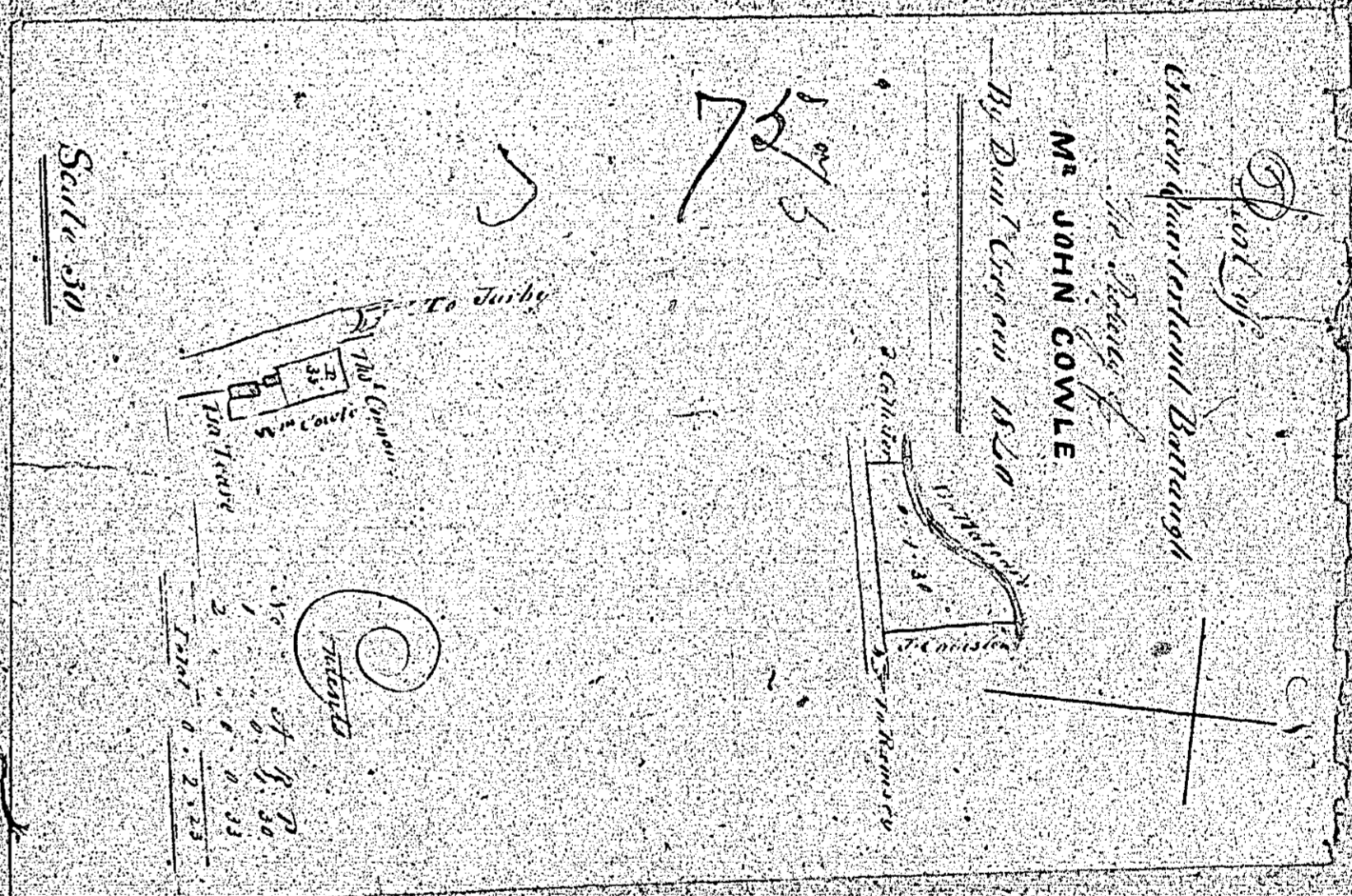
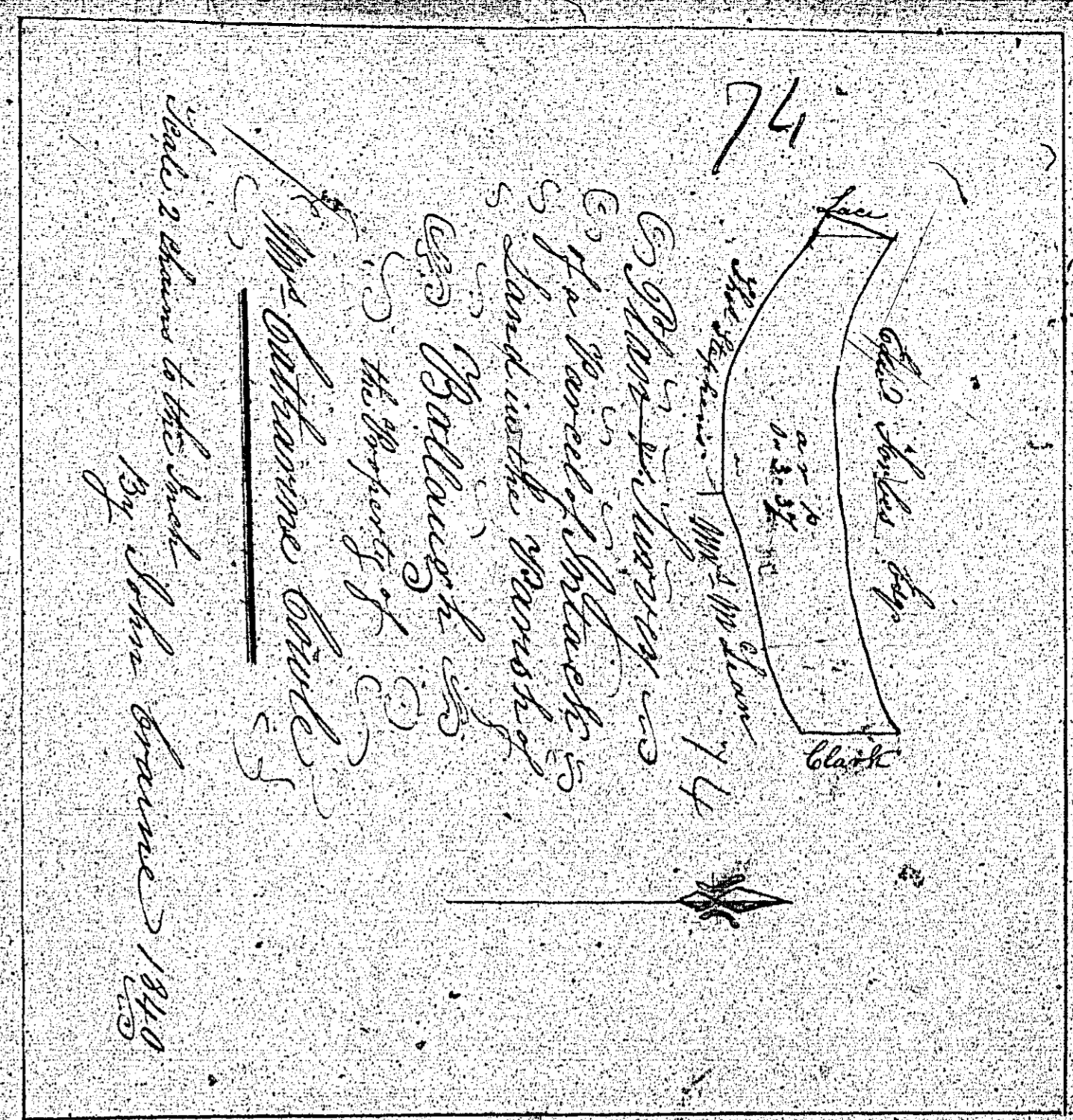


Contents			
No	A	R	P
1	1	5	16
2	1	0	29
3	1	0	15
4	1	0	10
5	0	2	2
6	0	0	18
Total	5	7	29

ISLE OF MAN GOVERNMENT: GENERAL REGISTRY
 TITHE PLANS: PARISH OF BALLAUGH

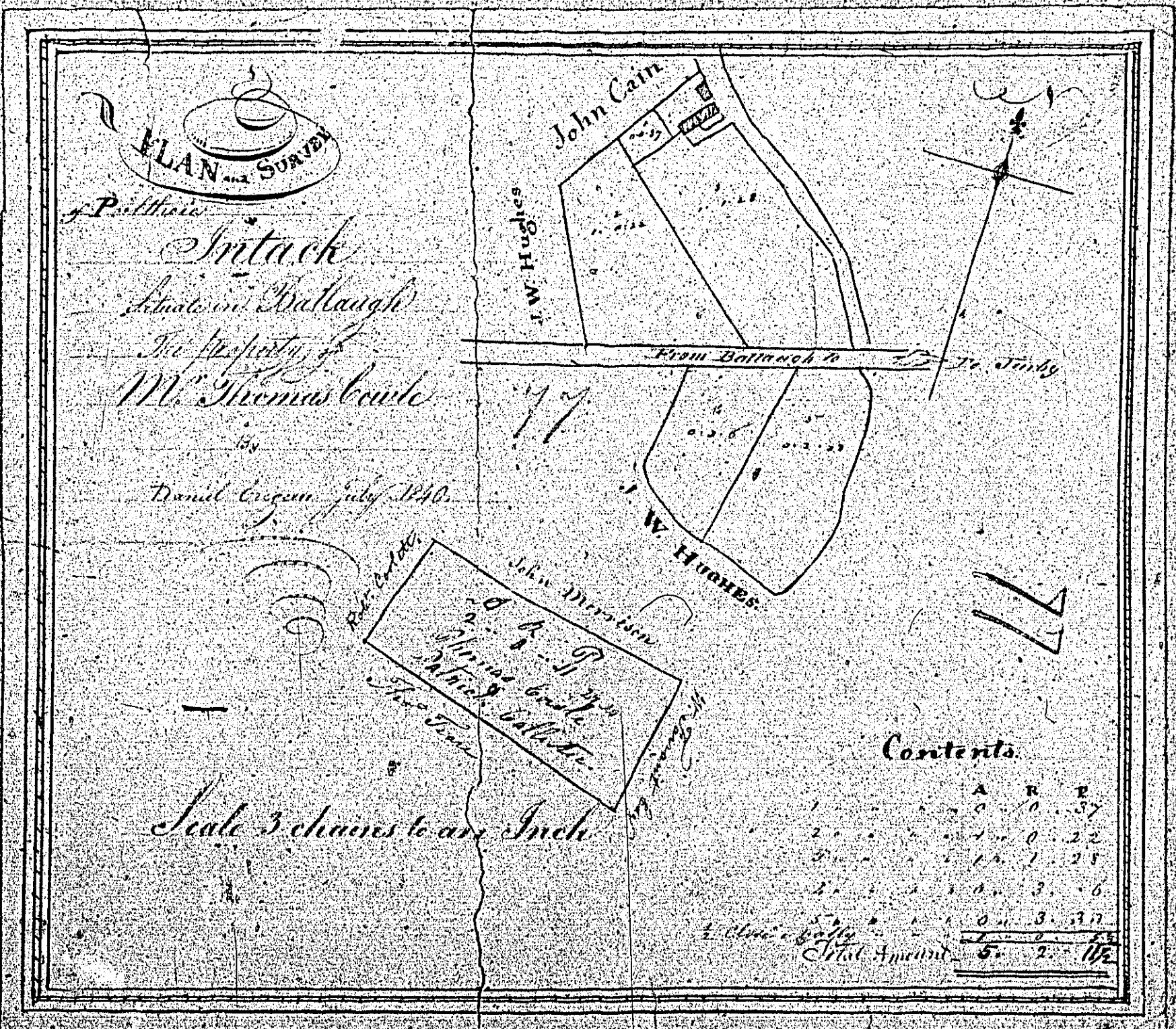
Originals monotone

1:30

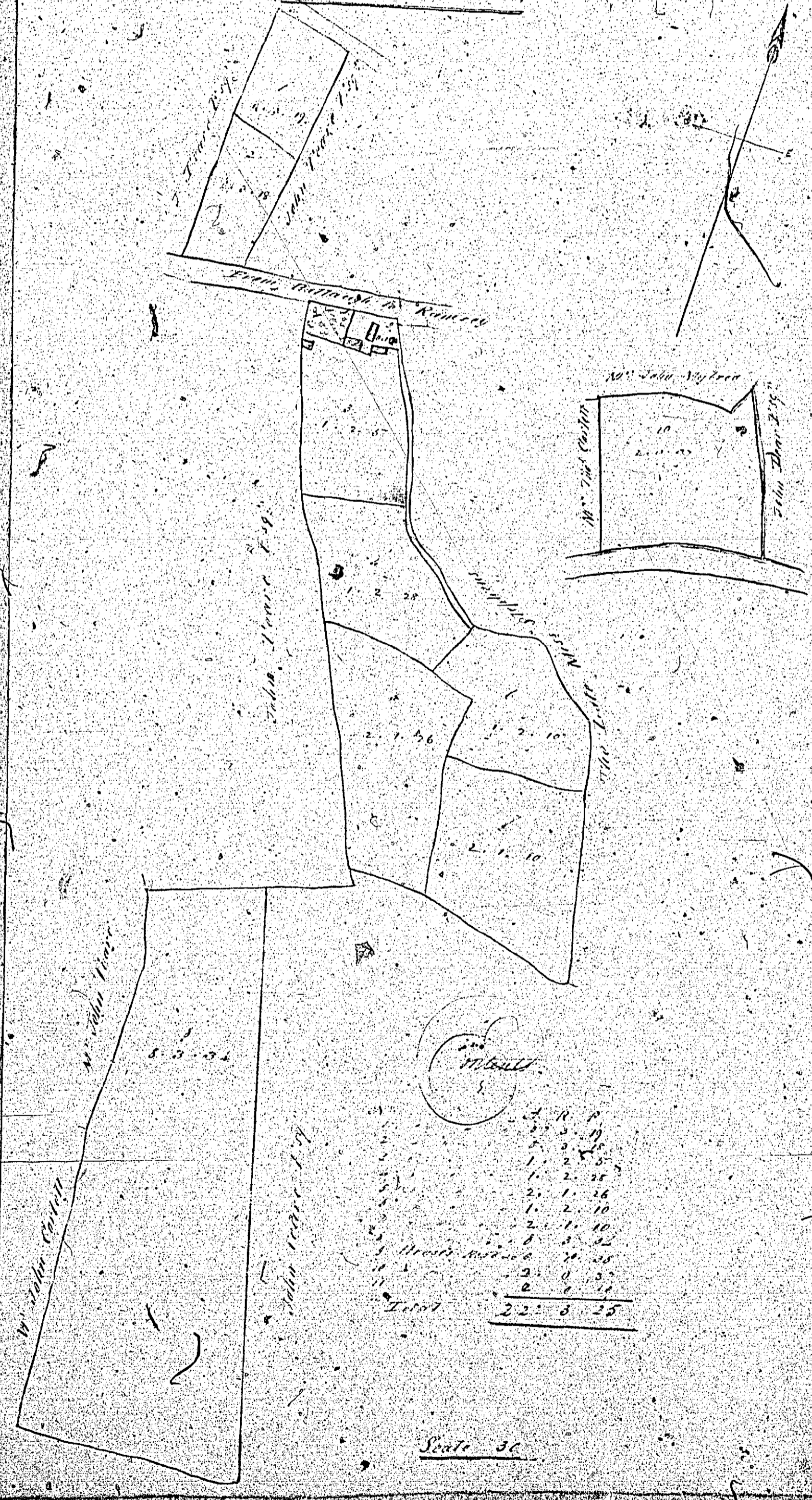


9

5



Part of
 Ballacry Quarterland 78.
 and Suback
 Ballacry
 the Property of
 Wm. Oliver Cowen
 By Daniel Cooper Sep. 1850



Scale 30