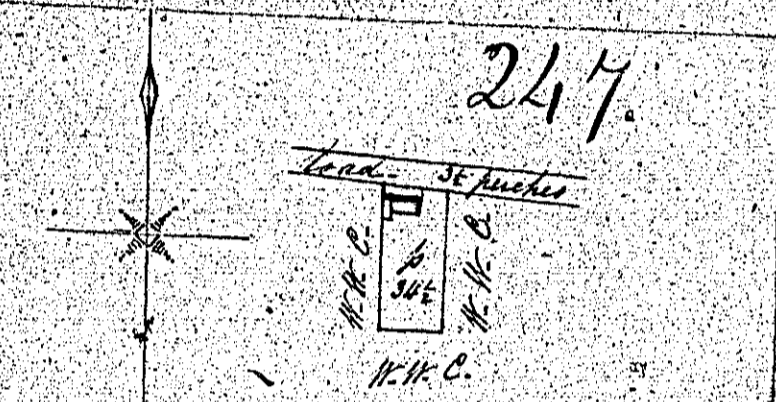


247.



South side ... 52
 East side ... 32

 20

247

Plan of a small garden or
 out-plot in the parish of
 Andover the Property of

Mr. John L. Hoyle

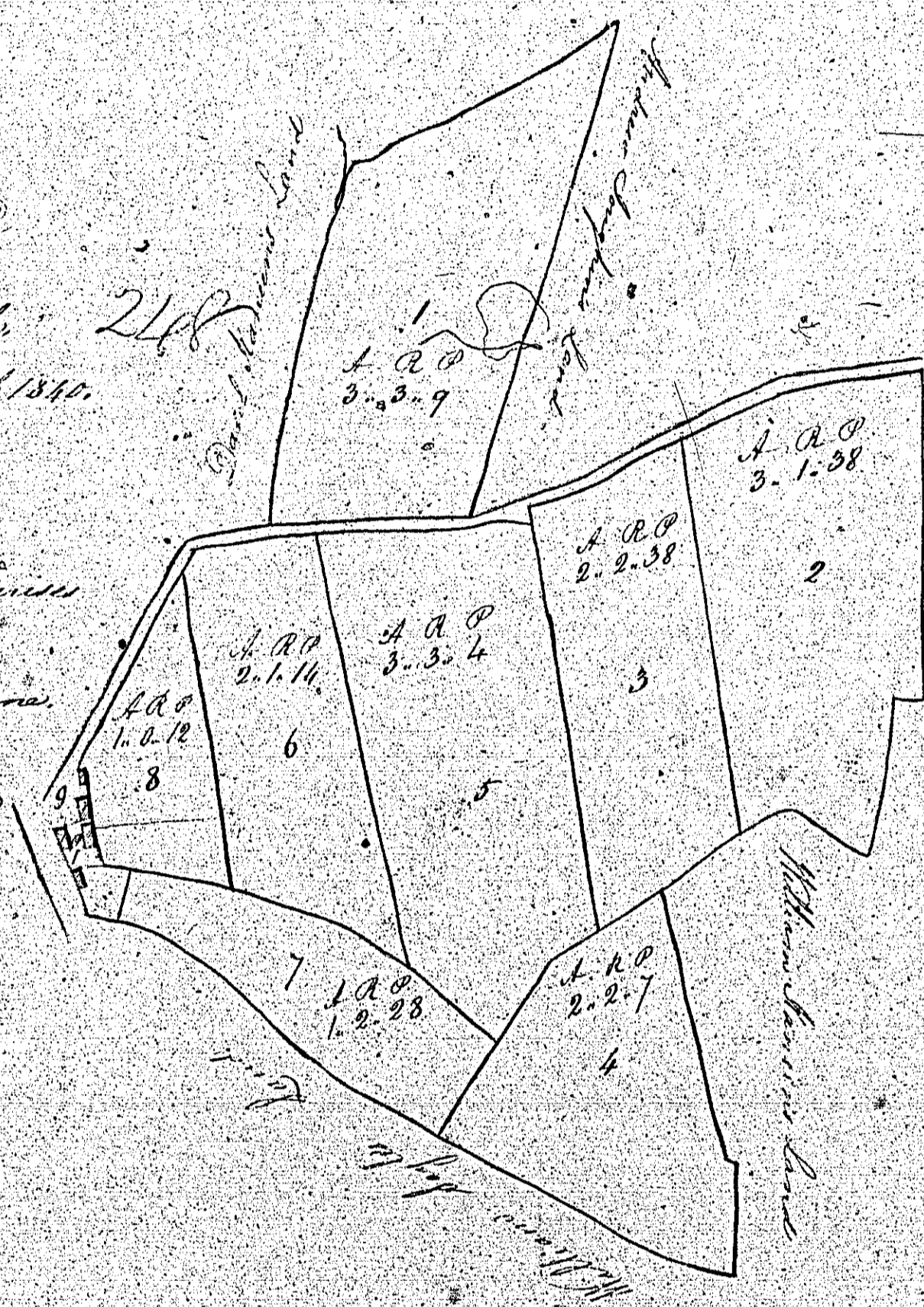
Containing 3 Chains to an Inch

Surveyed by
John L. Hoyle

1745

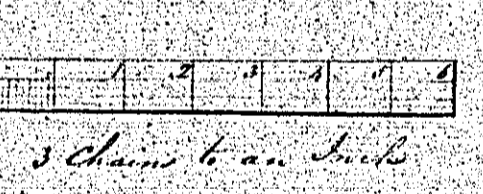
248.
MAP
 and Survey of
an ESTATE
 the Parish of Andreas,
 the Property of Mr. John Doyle
 Surveyed by Mr. Martin April 1840.

Part of Land No. 1-9. Confers
 part of the Decretal Land of
 Ballinastyn, Ballin and Larimar.
 The Decretal Land Boundaries of
 which cannot be exactly ascertained
 No. 10. is a part of the
 Decretal Land of the Decretal.

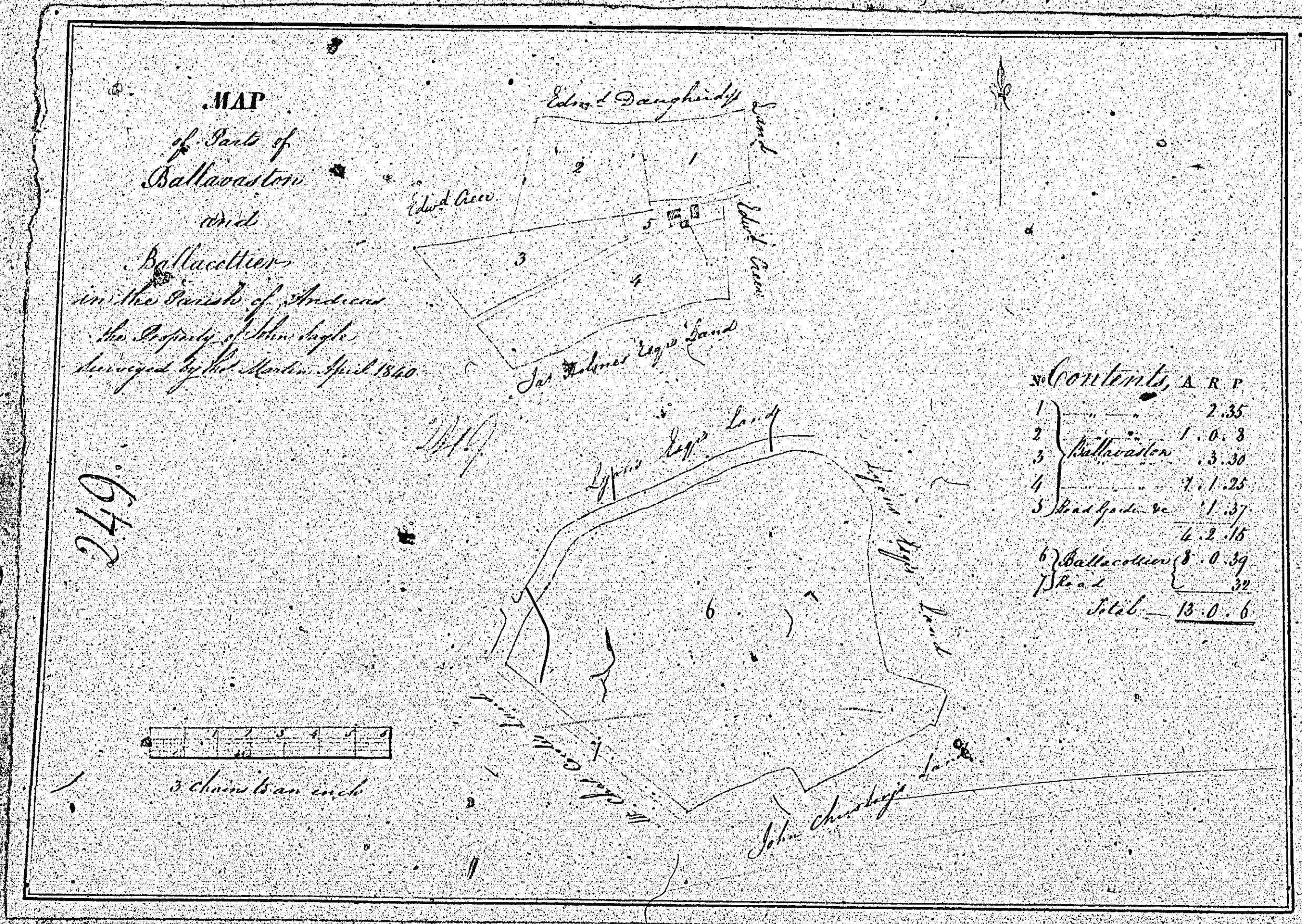


Contents

No.	A R P
1	3.3.9
2	3.1.38
3	2.2.38
4	2.2.7
5	3.3.4
6	2.1.4
7	1.2.28
8	1.5.18
9 Buildings &c	5.1.0
10	1.2.35
Total 28.1.25	



ISLE OF MAN GOVERNMENT: GENERAL REGISTRY
 TITHE PLANS: PARISH OF ANDREAS
 Original coloured (decorative) 1:30

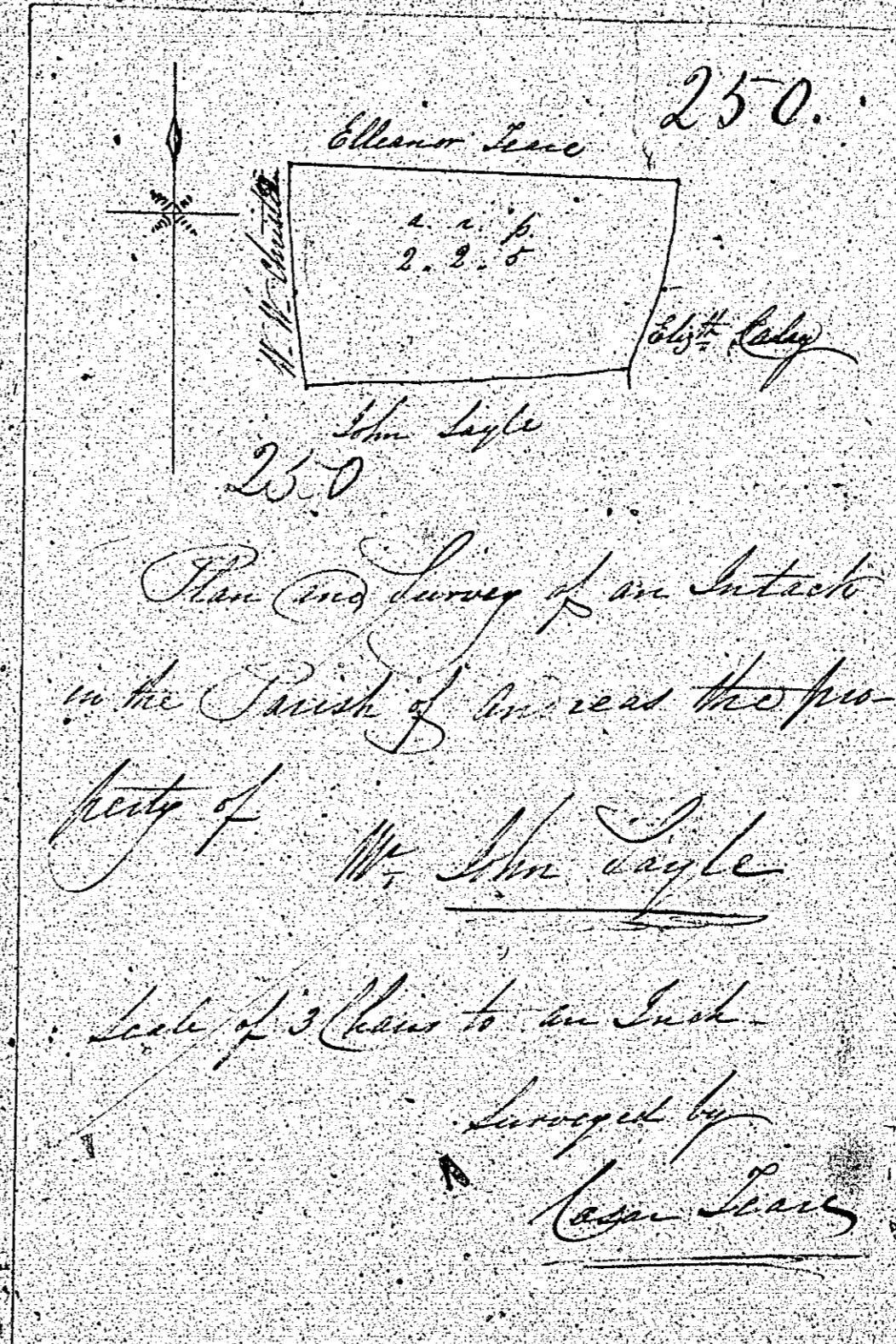


ISLE OF MAN GOVERNMENT: GENERAL REGISTRY

TITHE PLANS: PARISH OF ANDREAS

Original monotone

1:30



Plan and Survey of an Interest
in the Parish of Worcester
belonging to Mr. John Lyle
Scale of 3 Chains to an Inch
Surveyed by
James Lyle

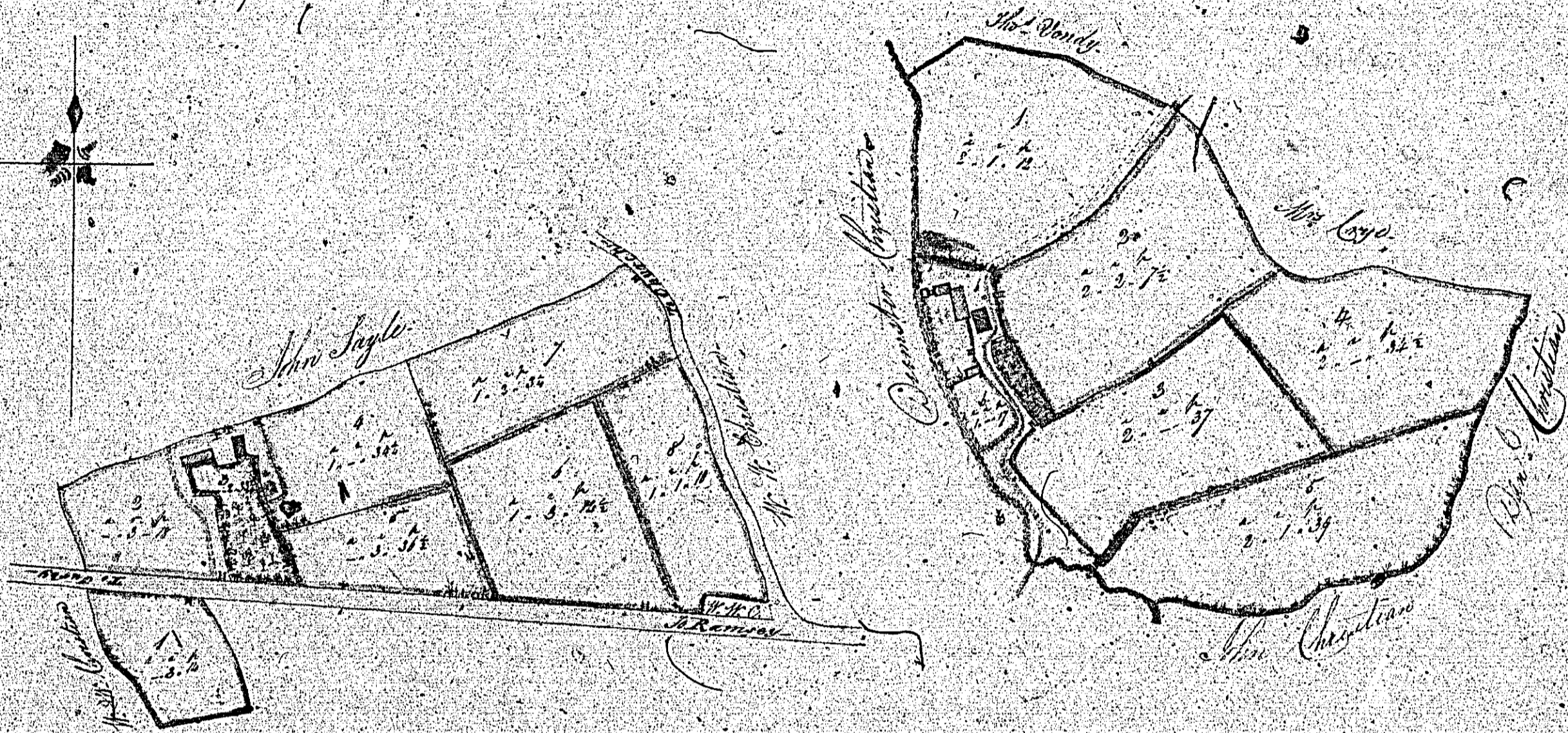
251.

A Plan and Survey of
 A part of Close in the parish of Andreas
 the property of
 Catherine Bayle
 taken June 20. 1840
 by Henry Sturges

Contents
 No. of the Plot 251
 1. 2. 2. 1
 2. 2. 1. 12
 3. 1. 2. 1
 4. 1. 2. 14
 5. 1. 2. 3
 garden plot 1. 21
 All 9. 5. 12

A side of 3 chains to an Inch

252



Content of part of Mr. Saylor's

1	1	1
2	1	1
3	1	1
4	1	1
5	1	1
6	1	1
7	1	1
8	1	1
Roads	0	2
Total sum	8	8

Plan and Survey of part of
 Messrs. Saylor's and part of
 the Decretal land of Ballagocky
 in the Parish of St. Andreas
 the property of
 Mr. Thomas Saylor

252

Scale of 3 Chains to an Inch
 Surveyed by
 Mr. James

Content of part of Ballagocky

1	1	1
2	1	1
3	1	1
4	1	1
5	1	1
6	1	1
7	1	1
8	1	1
9	1	1
10	1	1
11	1	1
12	1	1
13	1	1
14	1	1
15	1	1
16	1	1
17	1	1
18	1	1
19	1	1
20	1	1
21	1	1
22	1	1
23	1	1
24	1	1
25	1	1
26	1	1
27	1	1
28	1	1
29	1	1
30	1	1
31	1	1
32	1	1
33	1	1
34	1	1
35	1	1
36	1	1
37	1	1
38	1	1
39	1	1
40	1	1
41	1	1
42	1	1
43	1	1
44	1	1
45	1	1
46	1	1
47	1	1
48	1	1
49	1	1
50	1	1
51	1	1
52	1	1
53	1	1
54	1	1
55	1	1
56	1	1
57	1	1
58	1	1
59	1	1
60	1	1
61	1	1
62	1	1
63	1	1
64	1	1
65	1	1
66	1	1
67	1	1
68	1	1
69	1	1
70	1	1
71	1	1
72	1	1
73	1	1
74	1	1
75	1	1
76	1	1
77	1	1
78	1	1
79	1	1
80	1	1
81	1	1
82	1	1
83	1	1
84	1	1
85	1	1
86	1	1
87	1	1
88	1	1
89	1	1
90	1	1
91	1	1
92	1	1
93	1	1
94	1	1
95	1	1
96	1	1
97	1	1
98	1	1
99	1	1
100	1	1
Total sum in Acres	23	32 1/2

ISLE OF MAN GOVERNMENT: GENERAL REGISTRY
 TITHE PLANS: PARISH OF ANDREAS
 Original coloured 1:30