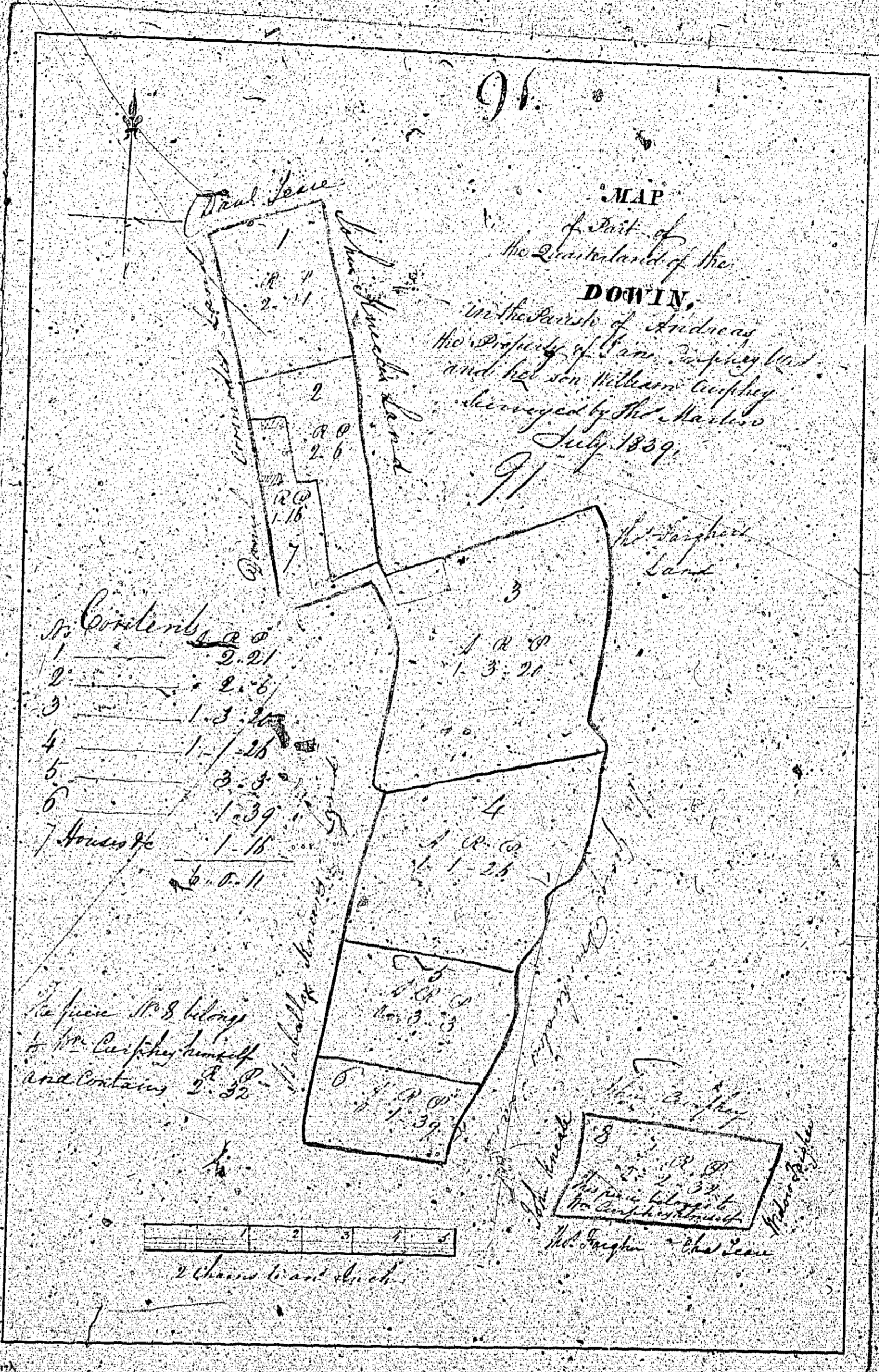
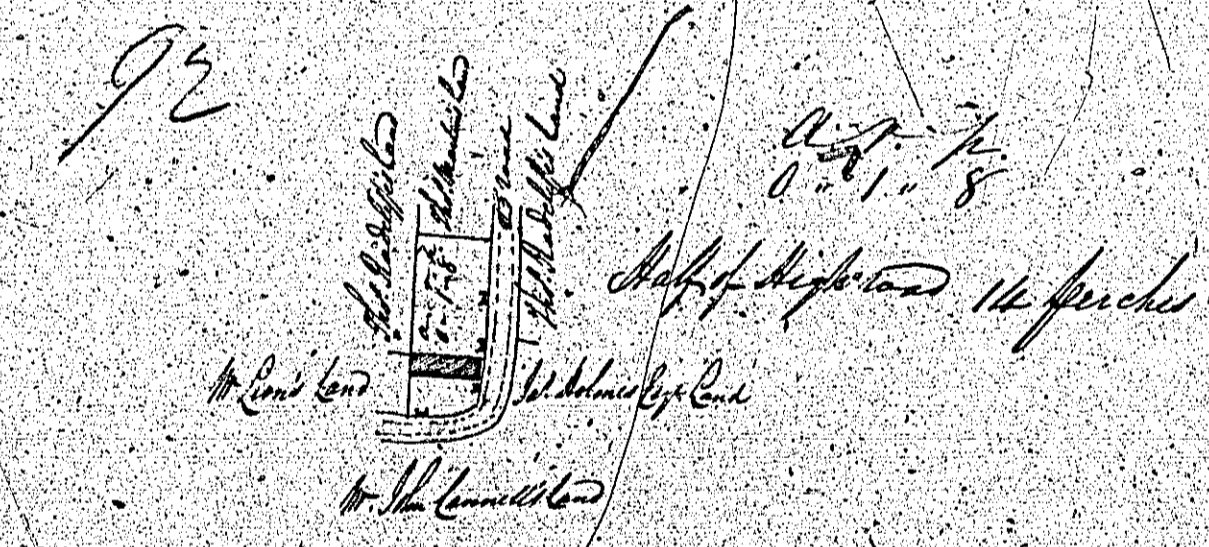


No. 111



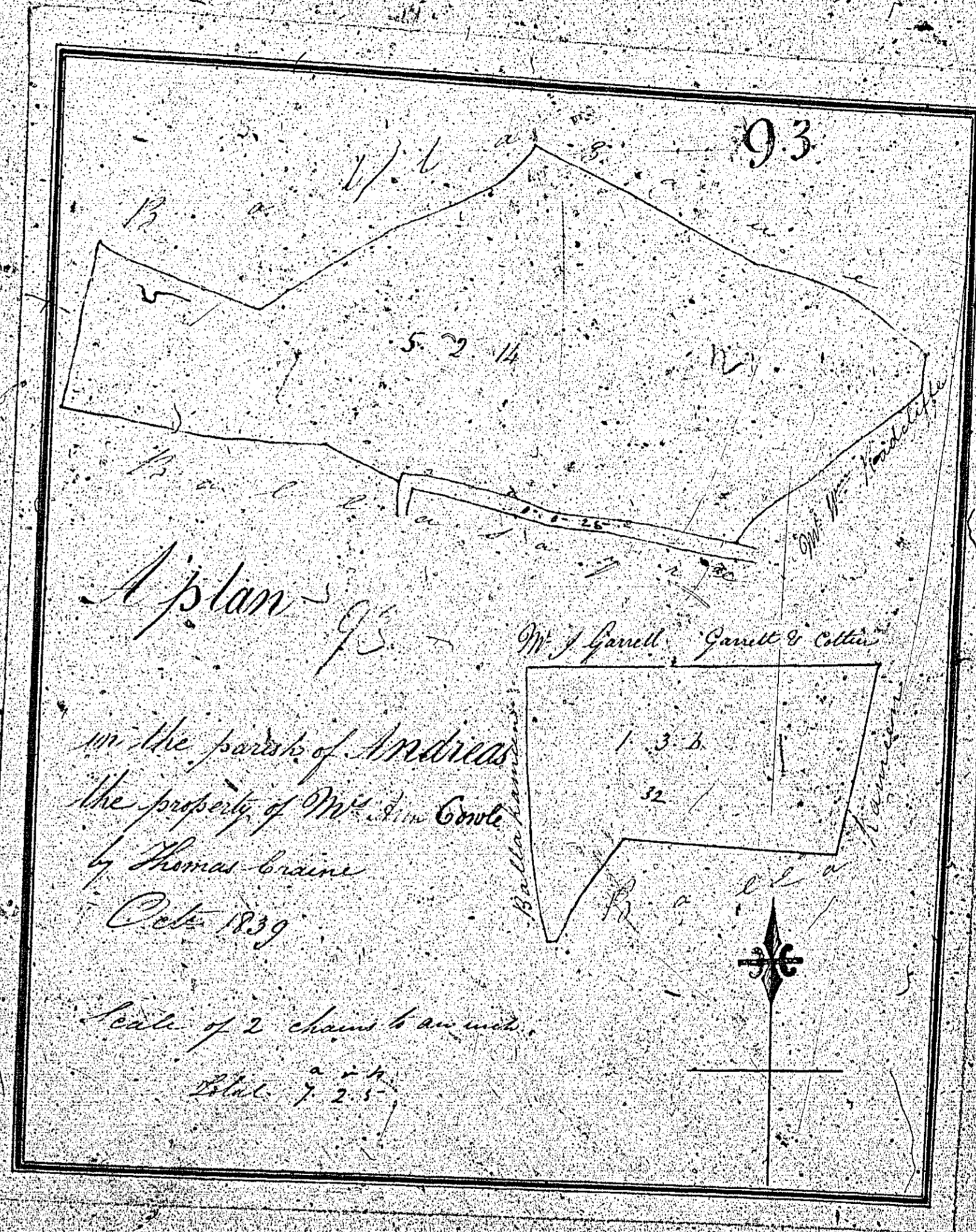


92  
Map and Survey  
of Part of the Quarterland  
of Balla-Raddiffe  
in the Parish of Andreas  
the property of Miss Jane Connell



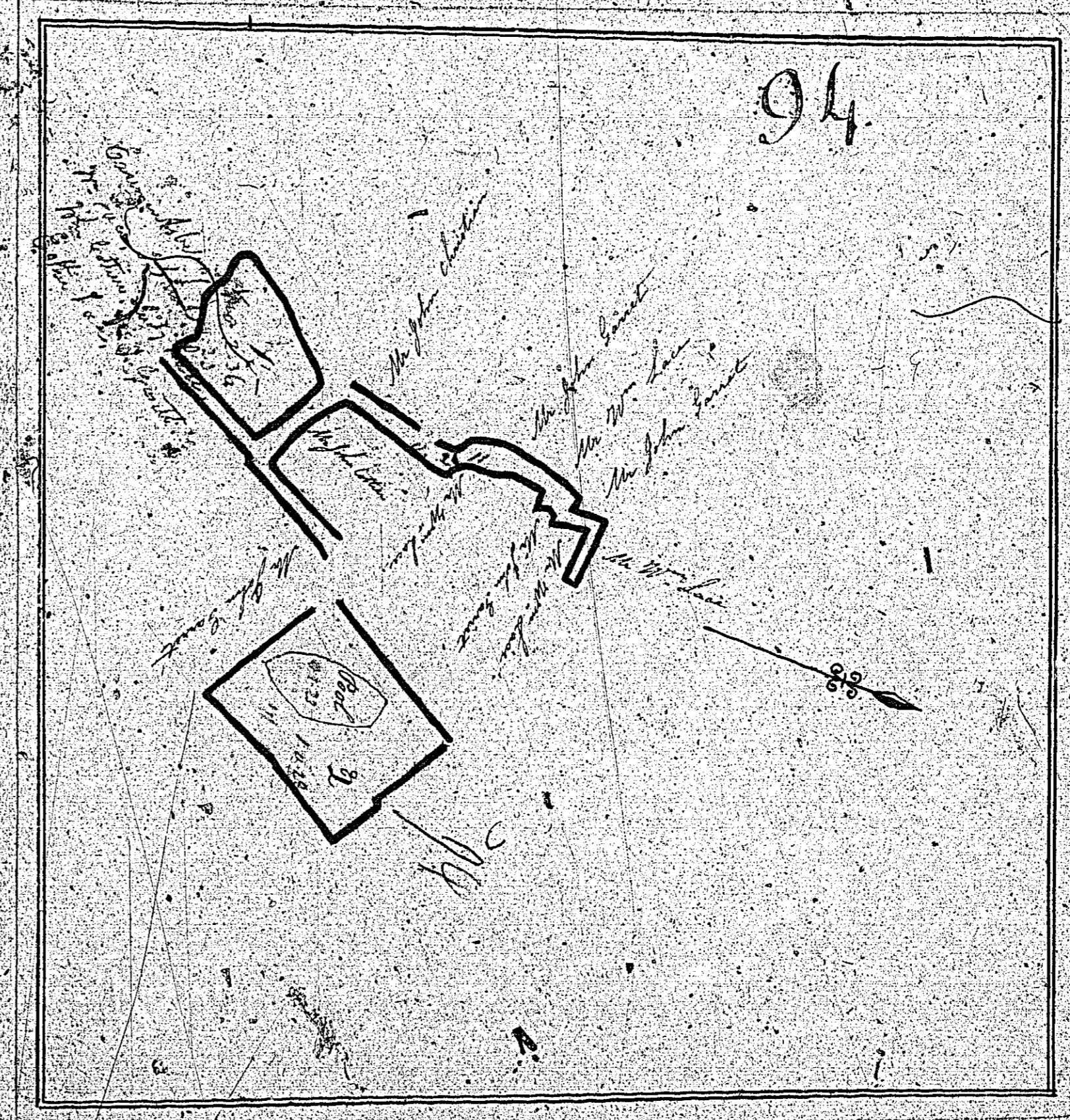
Surveyed by John Connell, schoolmaster  
Dist. Andreas. 15<sup>th</sup> October 1840







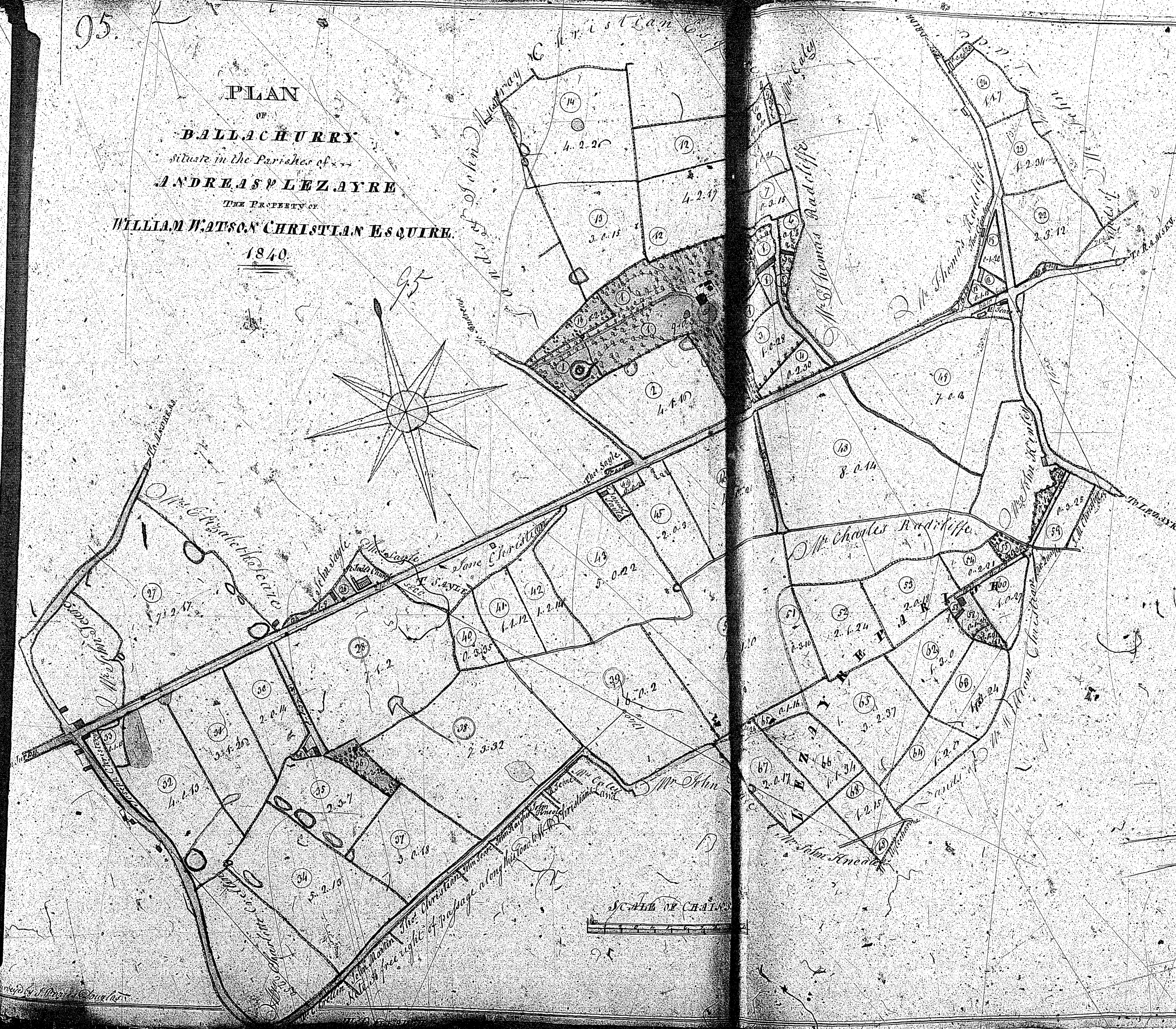
48  
225  
1180  
49



Surface  
& clock  
apart  
Batterey



PLAN  
OF  
**BALLACHURRY**  
situate in the Parishes of  
**ANDREAS & LEZAYRE**  
THE PROPERTY OF  
**WILLIAM WATSON CHRISTIAN ESQUIRE.**  
1840.



REFERENCE		
No.	Description	Acres
1	Manor House, Office, &c.	1 1/2
2	Head Garden, Plantation	1 1/2
3	Black Croft	1 1/2
4	Garden	1 1/2
5	Manor House, Office, &c.	1 1/2
6	Black Croft	1 1/2
7	Garden	1 1/2
8	Manor House, Office, &c.	1 1/2
9	Black Croft	1 1/2
10	Garden	1 1/2
11	Manor House, Office, &c.	1 1/2
12	Black Croft	1 1/2
13	Garden	1 1/2
14	Manor House, Office, &c.	1 1/2
15	Black Croft	1 1/2
16	Garden	1 1/2
17	Manor House, Office, &c.	1 1/2
18	Black Croft	1 1/2
19	Garden	1 1/2
20	Manor House, Office, &c.	1 1/2
21	Black Croft	1 1/2
22	Garden	1 1/2
23	Manor House, Office, &c.	1 1/2
24	Black Croft	1 1/2
25	Garden	1 1/2
26	Manor House, Office, &c.	1 1/2
27	Black Croft	1 1/2
28	Garden	1 1/2
29	Manor House, Office, &c.	1 1/2
30	Black Croft	1 1/2
31	Garden	1 1/2
32	Manor House, Office, &c.	1 1/2
33	Black Croft	1 1/2
34	Garden	1 1/2
35	Manor House, Office, &c.	1 1/2
36	Black Croft	1 1/2
37	Garden	1 1/2
38	Manor House, Office, &c.	1 1/2
39	Black Croft	1 1/2
40	Garden	1 1/2
41	Manor House, Office, &c.	1 1/2
42	Black Croft	1 1/2
43	Garden	1 1/2
44	Manor House, Office, &c.	1 1/2
45	Black Croft	1 1/2
46	Garden	1 1/2
47	Manor House, Office, &c.	1 1/2
48	Black Croft	1 1/2
49	Garden	1 1/2
50	Manor House, Office, &c.	1 1/2
51	Black Croft	1 1/2
52	Garden	1 1/2
53	Manor House, Office, &c.	1 1/2
54	Black Croft	1 1/2
55	Garden	1 1/2
56	Manor House, Office, &c.	1 1/2
57	Black Croft	1 1/2
58	Garden	1 1/2
59	Manor House, Office, &c.	1 1/2
60	Black Croft	1 1/2
61	Garden	1 1/2
62	Manor House, Office, &c.	1 1/2
63	Black Croft	1 1/2
64	Garden	1 1/2
65	Manor House, Office, &c.	1 1/2
66	Black Croft	1 1/2
67	Garden	1 1/2
68	Manor House, Office, &c.	1 1/2
69	Black Croft	1 1/2
70	Garden	1 1/2
71	Manor House, Office, &c.	1 1/2
72	Black Croft	1 1/2
73	Garden	1 1/2
74	Manor House, Office, &c.	1 1/2
75	Black Croft	1 1/2
76	Garden	1 1/2
77	Manor House, Office, &c.	1 1/2
78	Black Croft	1 1/2
79	Garden	1 1/2
80	Manor House, Office, &c.	1 1/2

*Handwritten notes:*  
 Made by Andrew  
 Watson

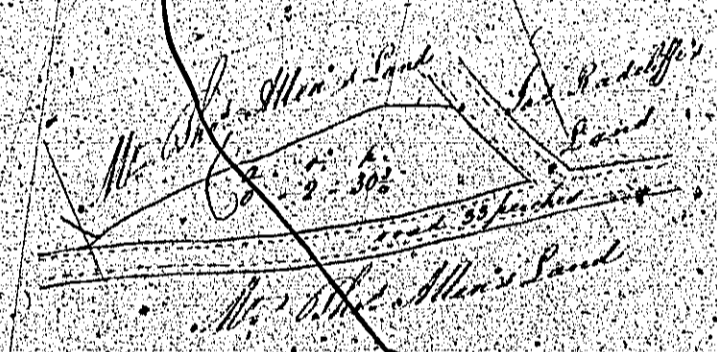
*Handwritten notes:*  
 W. Watson



3	3.88	3	3.88
2	2.12	2	2.12
1	1.66	1	1.66
0	0.00	0	0.00
1	1.92	1	1.92
2	3.84	2	3.84
3	5.76	3	5.76
4	7.68	4	7.68
5	9.60	5	9.60
6	11.52	6	11.52
7	13.44	7	13.44
8	15.36	8	15.36
9	17.28	9	17.28
10	19.20	10	19.20
11	21.12	11	21.12
12	23.04	12	23.04
13	24.96	13	24.96
14	26.88	14	26.88
15	28.80	15	28.80
16	30.72	16	30.72
17	32.64	17	32.64
18	34.56	18	34.56
19	36.48	19	36.48
20	38.40	20	38.40
21	40.32	21	40.32
22	42.24	22	42.24
23	44.16	23	44.16
24	46.08	24	46.08
25	48.00	25	48.00
26	50.00	26	50.00
27	52.00	27	52.00
28	54.00	28	54.00
29	56.00	29	56.00
30	58.00	30	58.00
31	60.00	31	60.00
32	62.00	32	62.00
33	64.00	33	64.00
34	66.00	34	66.00
35	68.00	35	68.00
36	70.00	36	70.00
37	72.00	37	72.00
38	74.00	38	74.00
39	76.00	39	76.00
40	78.00	40	78.00
41	80.00	41	80.00
42	82.00	42	82.00
43	84.00	43	84.00
44	86.00	44	86.00
45	88.00	45	88.00
46	90.00	46	90.00
47	92.00	47	92.00
48	94.00	48	94.00
49	96.00	49	96.00
50	98.00	50	98.00
51	100.00	51	100.00

Surveyed by John Cornwell  
 1840  
 Parish of Andreas

Map and Survey  
 of a small Suback in the  
 Parish of St. Andreas  
 The Property of Mr. John Cornwell



0 5 302  
 John Cornwell

Surveyed by John Cornwell Schiedman  
 St. Andreas 1840

ISLE OF MAN GOVERNMENT: GENERAL REGISTRY  
 TITHE PLANS: PARISH OF ANDREAS

Original monotone

1:30