

NOTES

The plans have been filmed in their bound state

This will have caused some image distortion particularly where large plans go into the binding gutter and/or have been folded.

Many of the larger plans are damaged

Where plans are coloured this has been noted; 'monochrome' indicates a single ink colour which may be black, brown or blue

START OF VOLUME

Volume 1

(plans numbered 1-149)

is missing

ISLE OF MAN GOVERNMENT: GENERAL REGISTRY

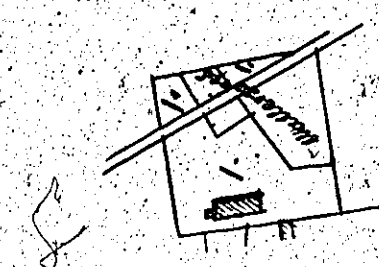
ASYLUM PLANS: PARISH OF RUSHEN

Original monotone

1:23

(130)

*Crugnearn in Rushen
Belonging to Jas Quinte*

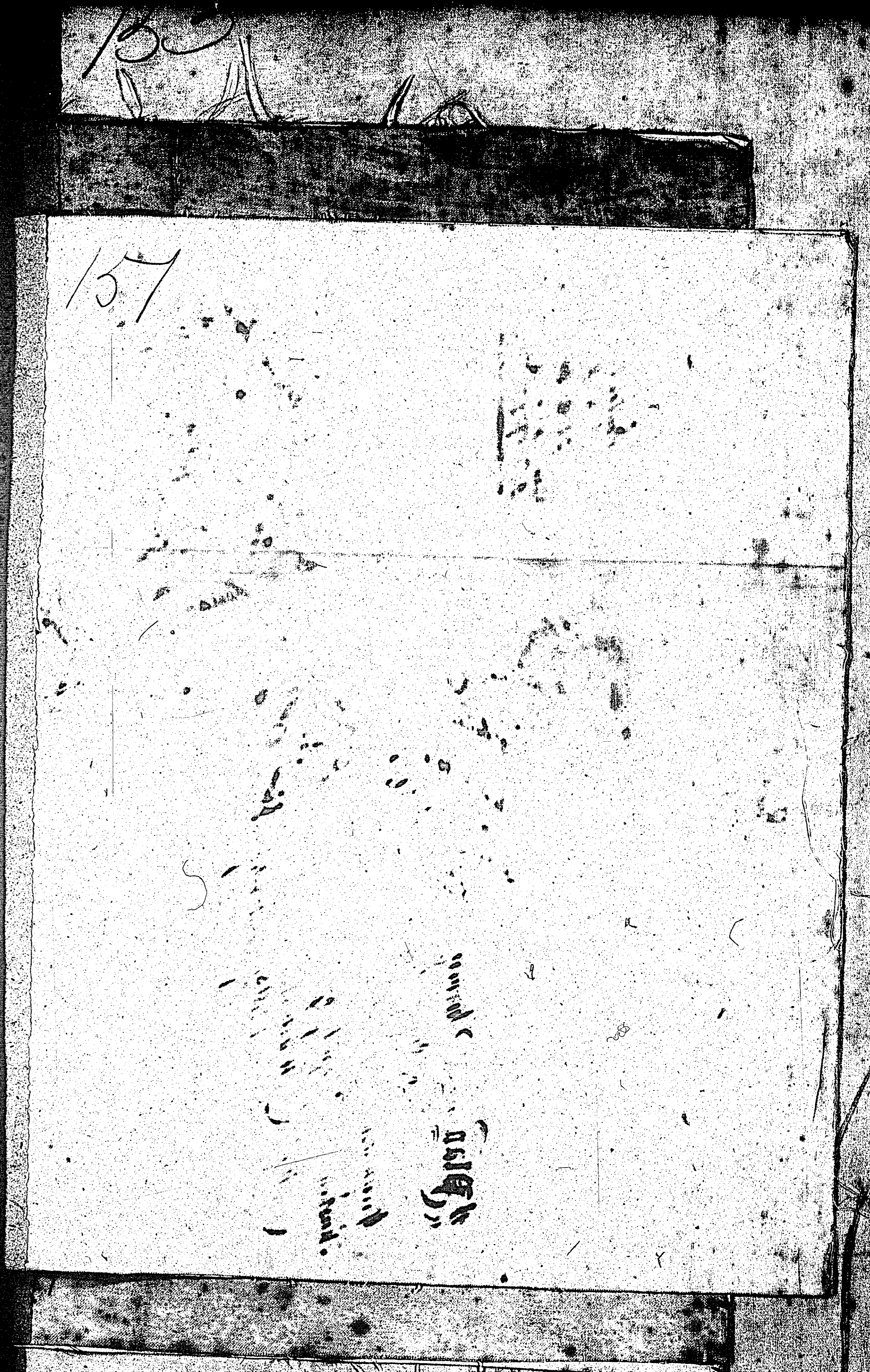


Content of 1.13

Scale 1/3 chains to an inch

*Copy from plan 179 by
J. J. Wood 1883*

The following plan
is numbered 62
but 151 is
pencilled on the back



ISLE OF MAN GOVERNMENT: GENERAL REGISTRY

ASYLUM PLANS: PARISH OF RUSHEN

Original coloured (decorative)

1:23

