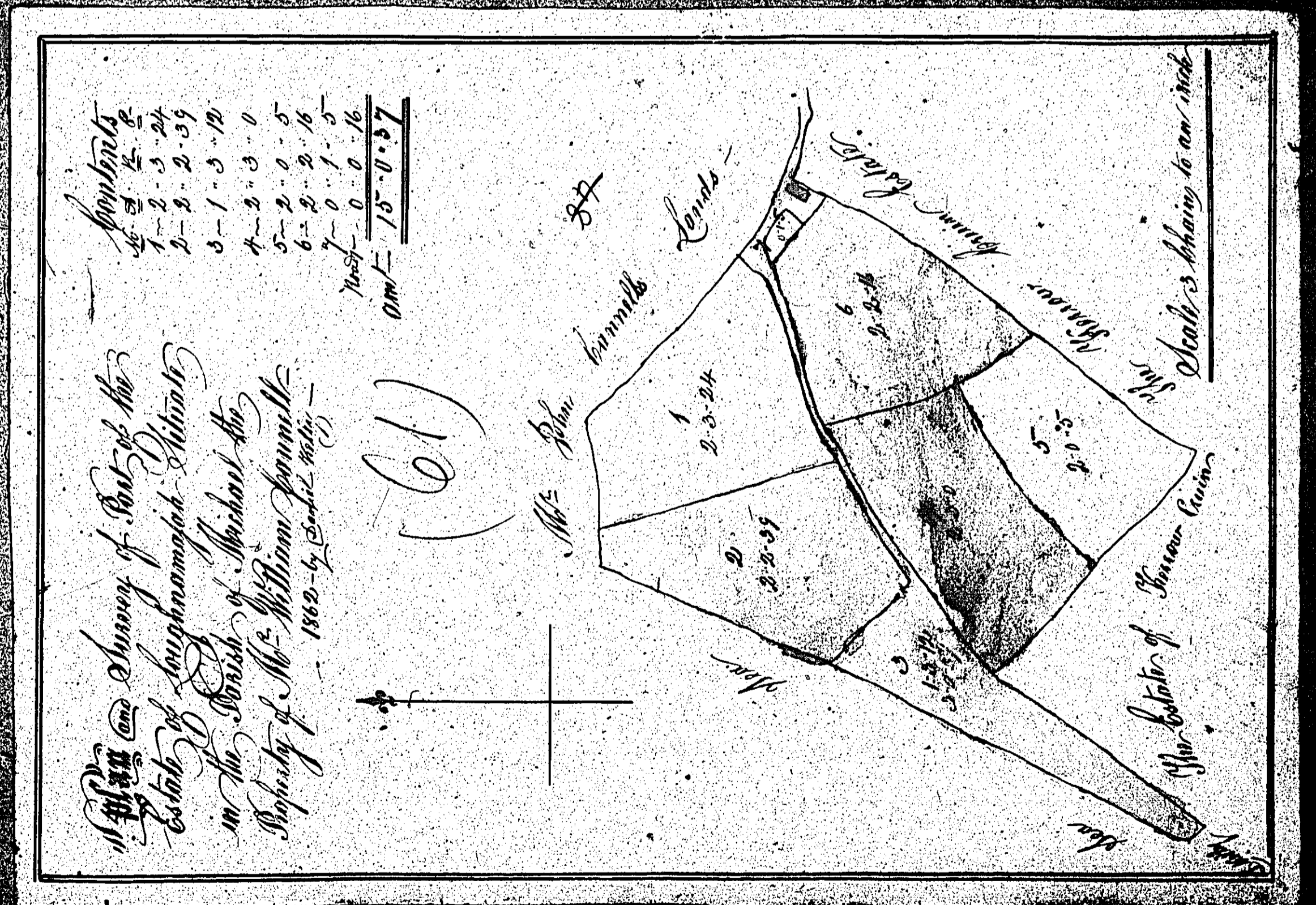
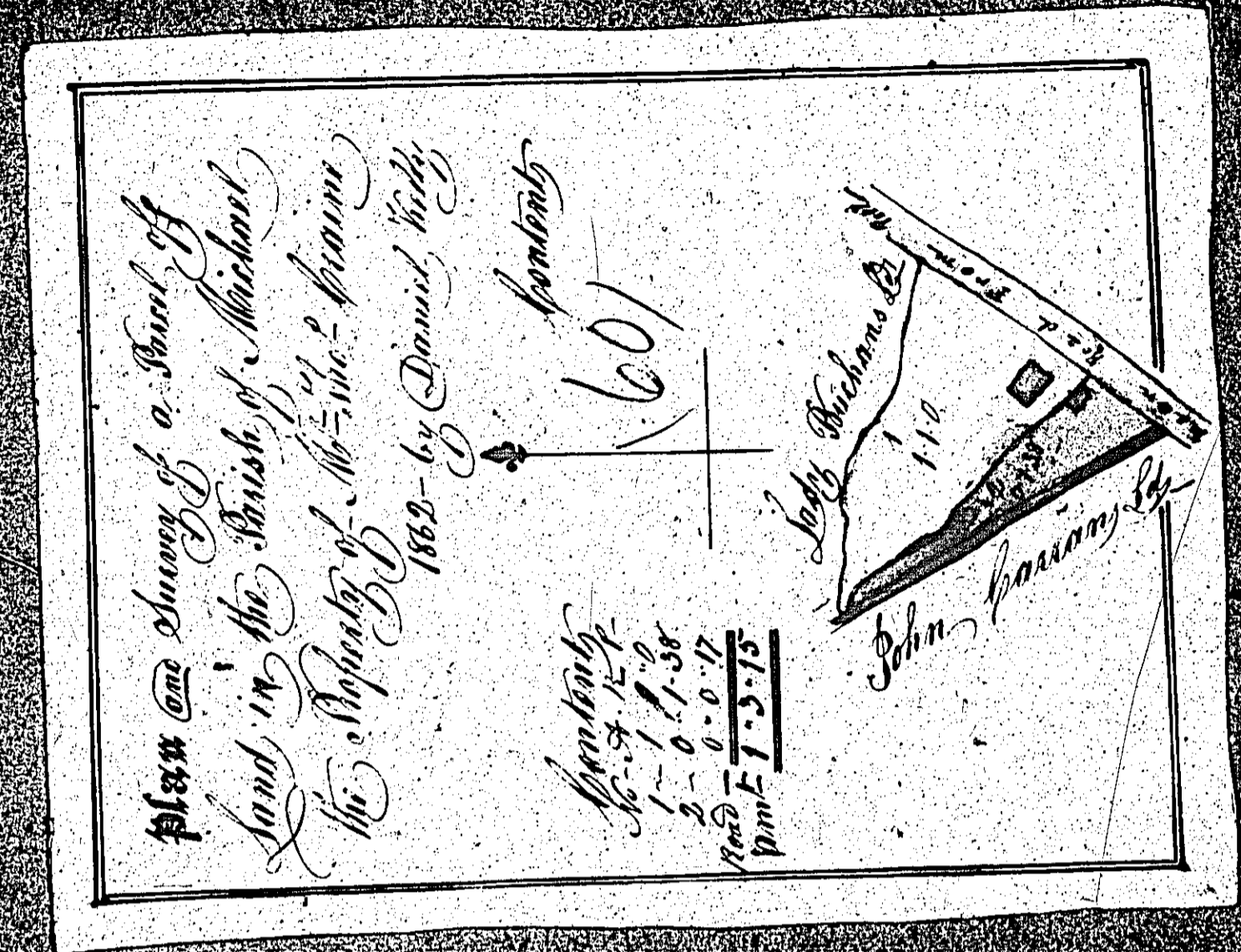


ISLE OF MAN GOVERNMENT: GENERAL REGISTRY

ASYLUM PLANS: PARISH OF MICHAEL

Originals coloured

1:23

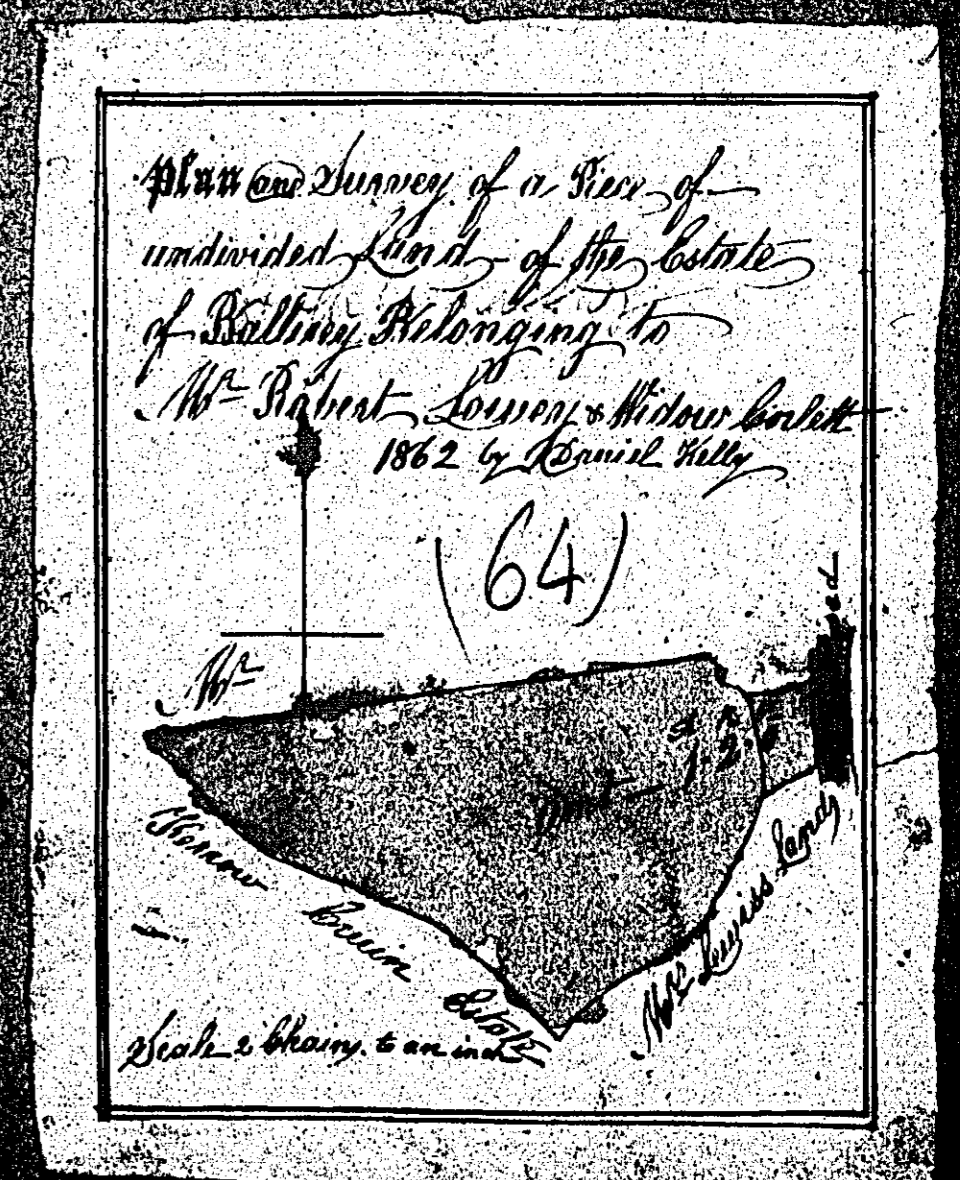
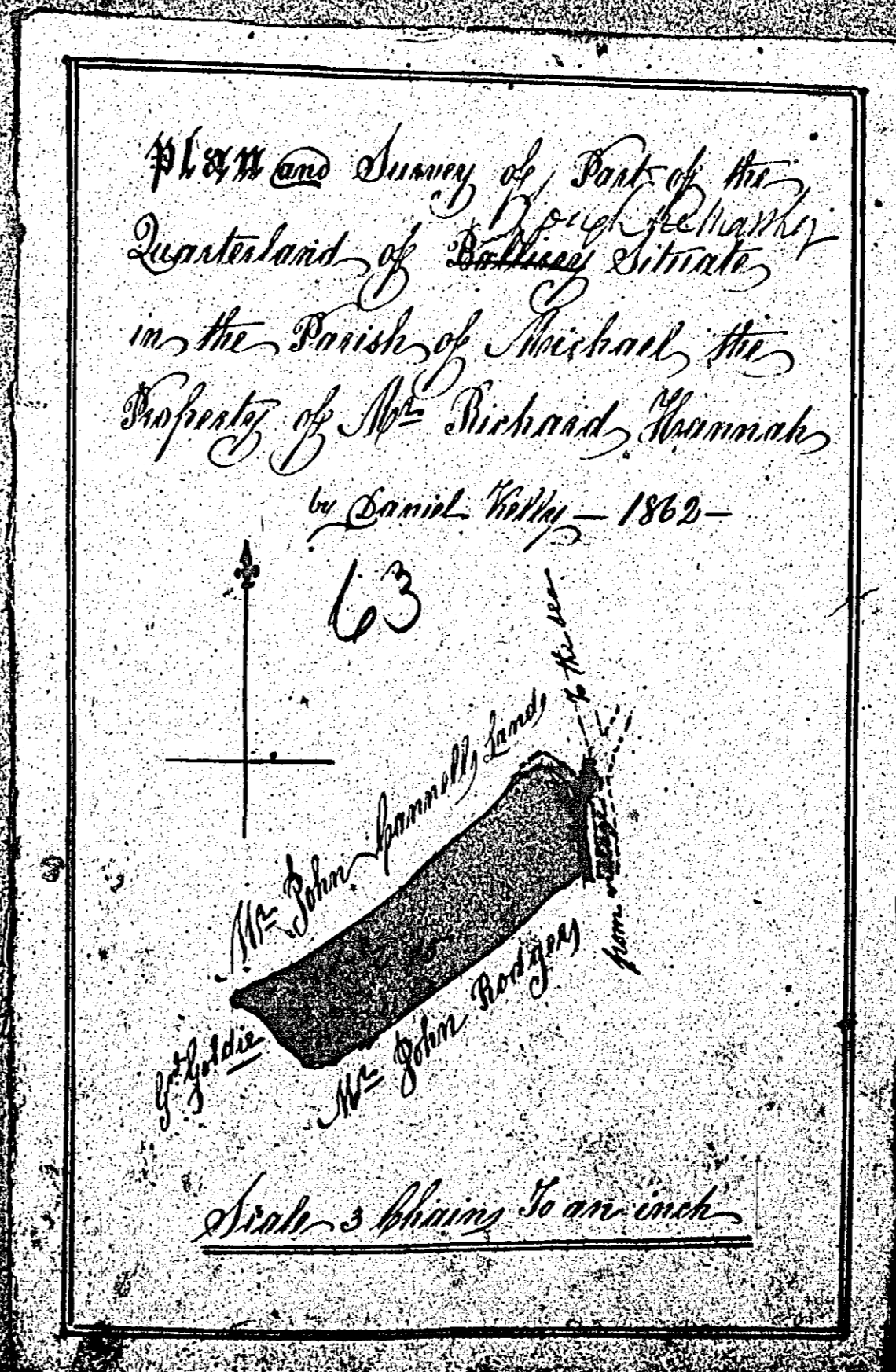
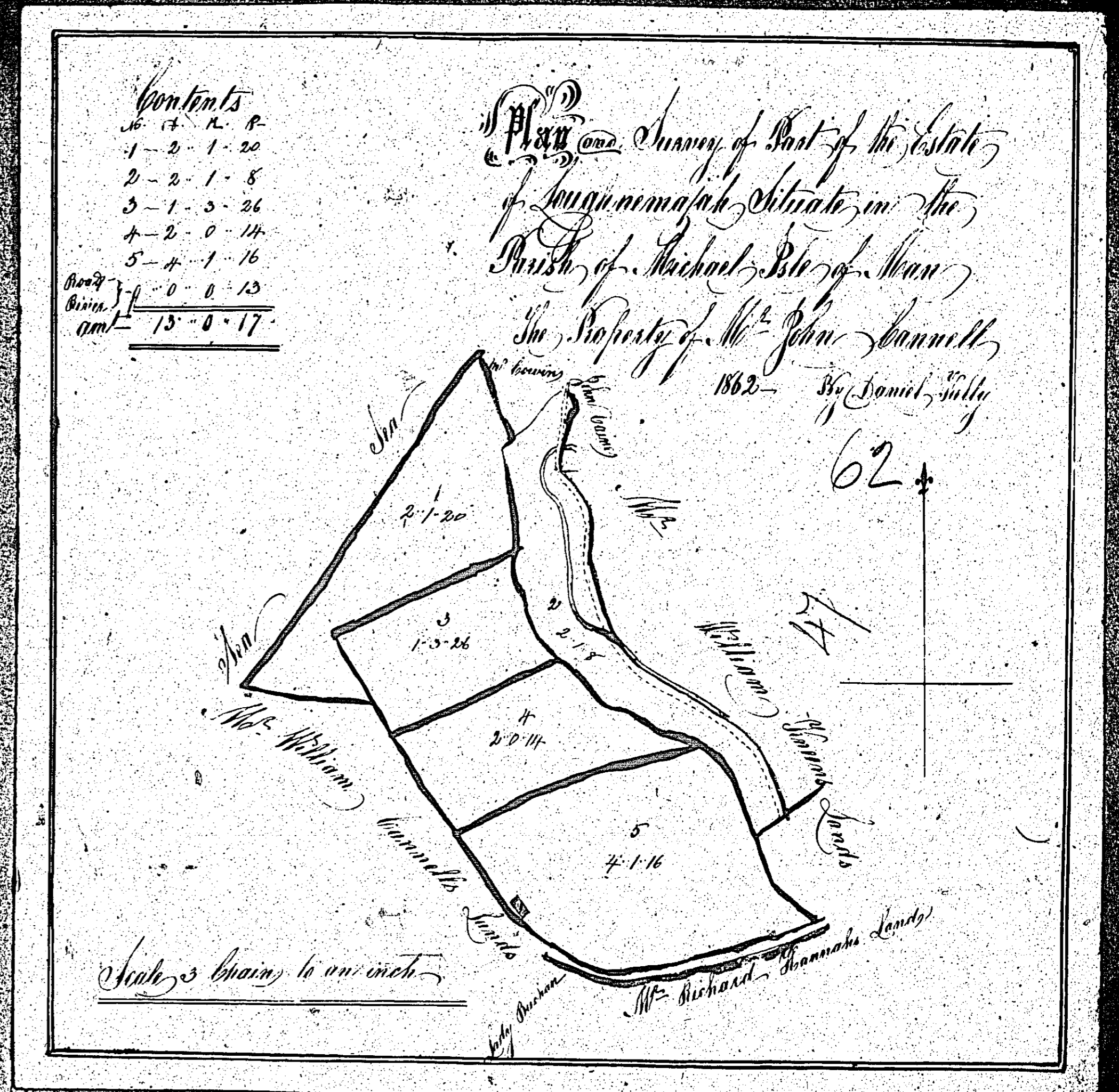


ISLE OF MAN GOVERNMENT: GENERAL REGISTRY

ASYLUM PLANS: PARISH OF MICHAEL

Originals coloured

1:23

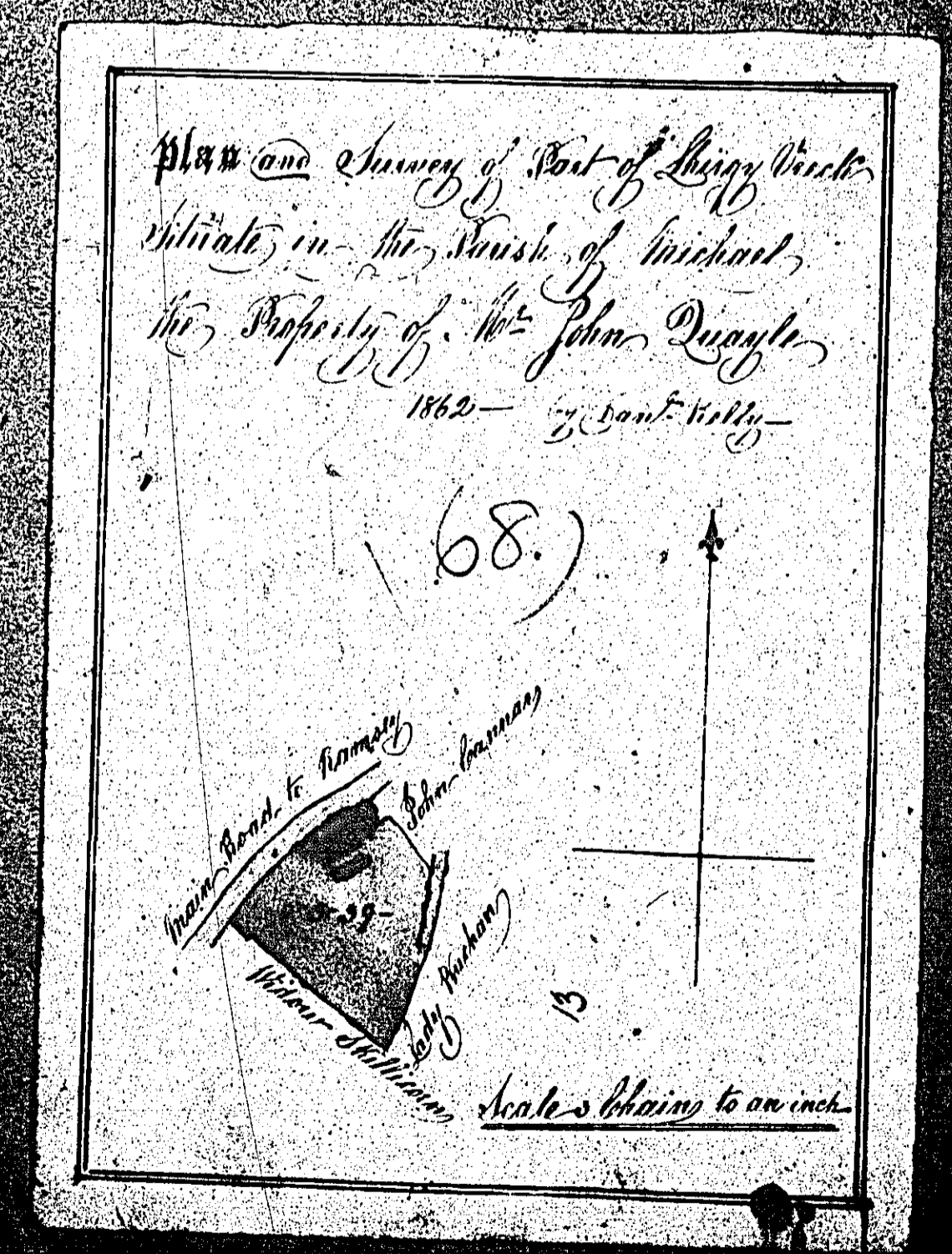
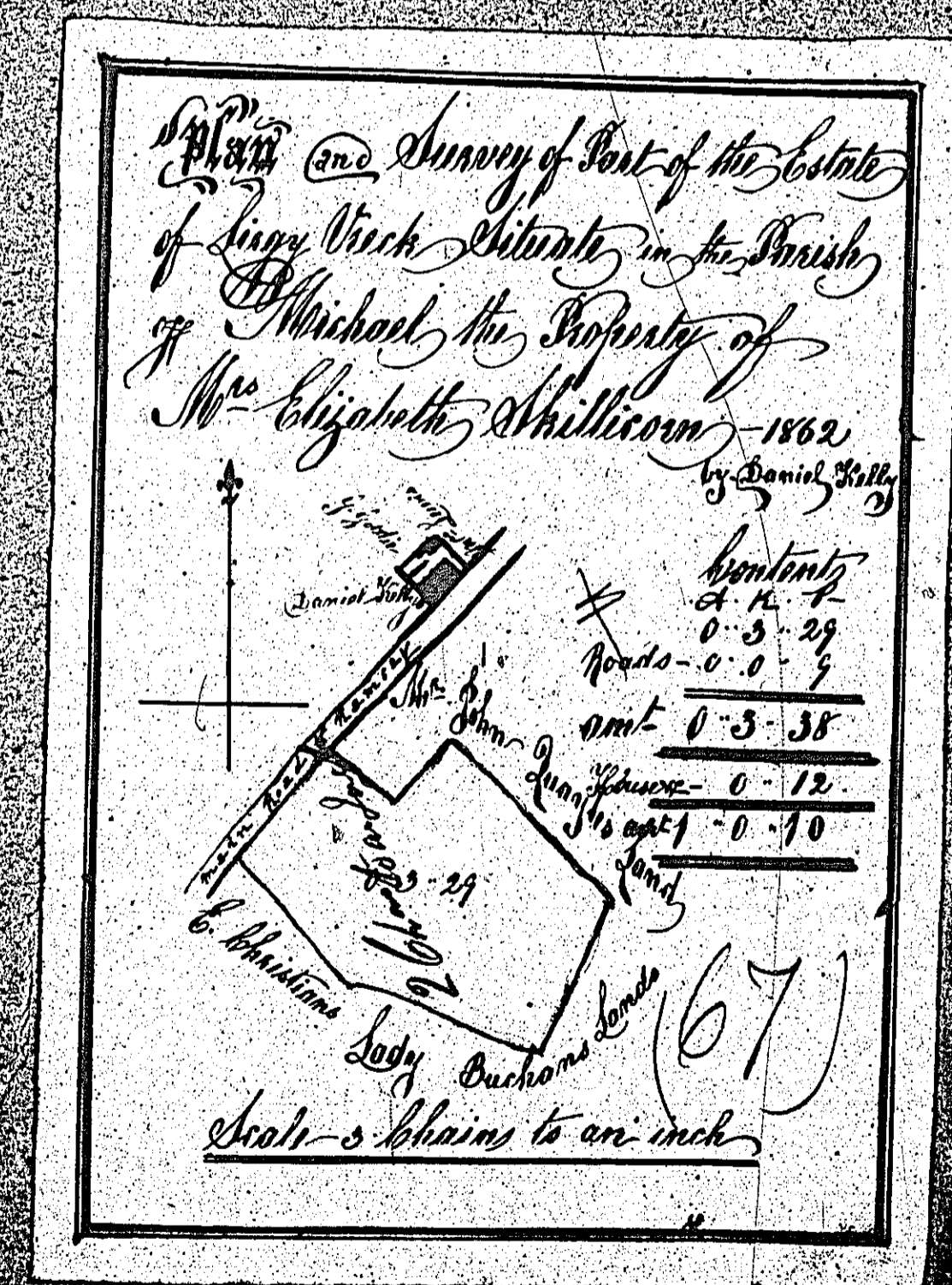
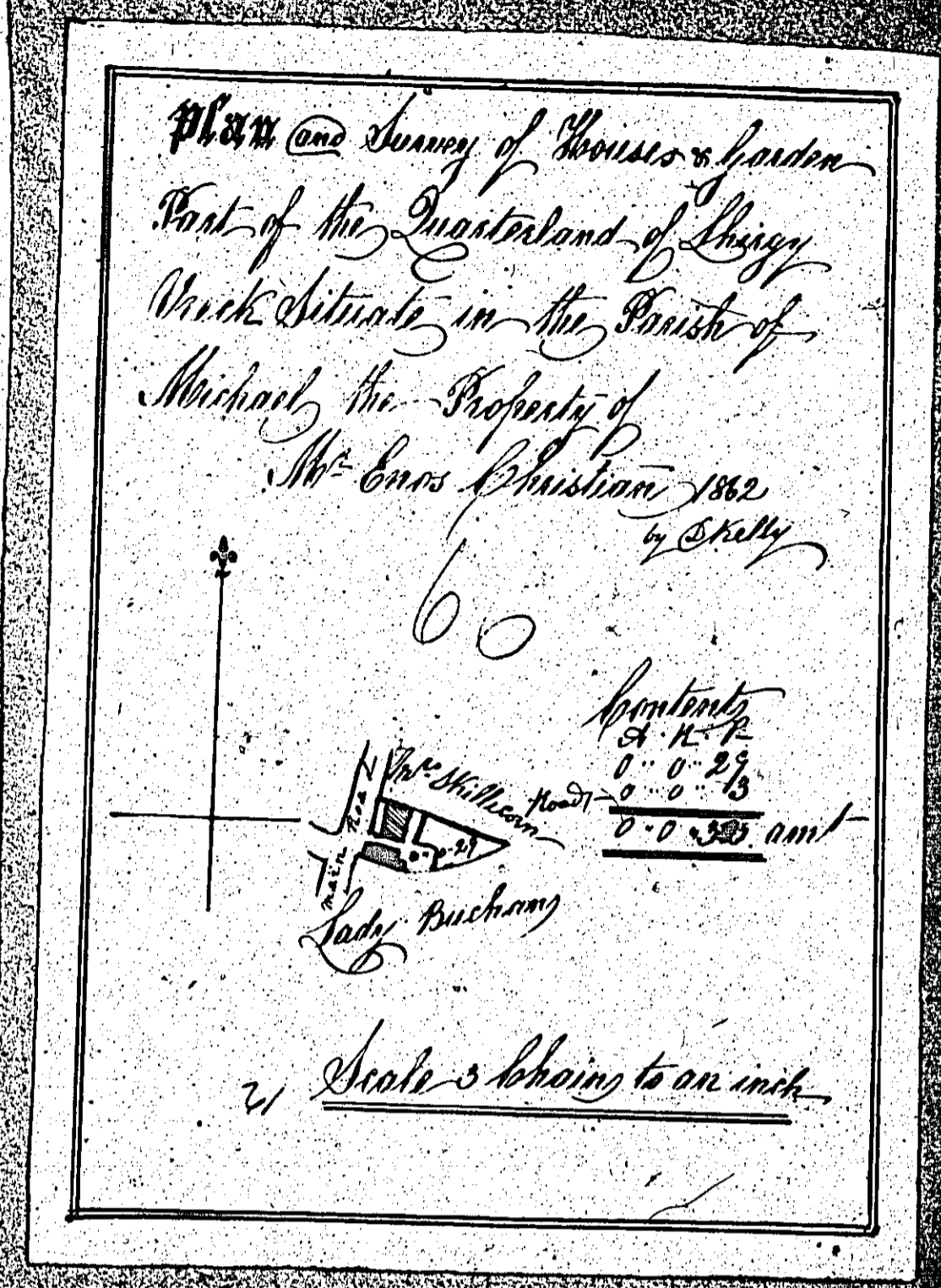
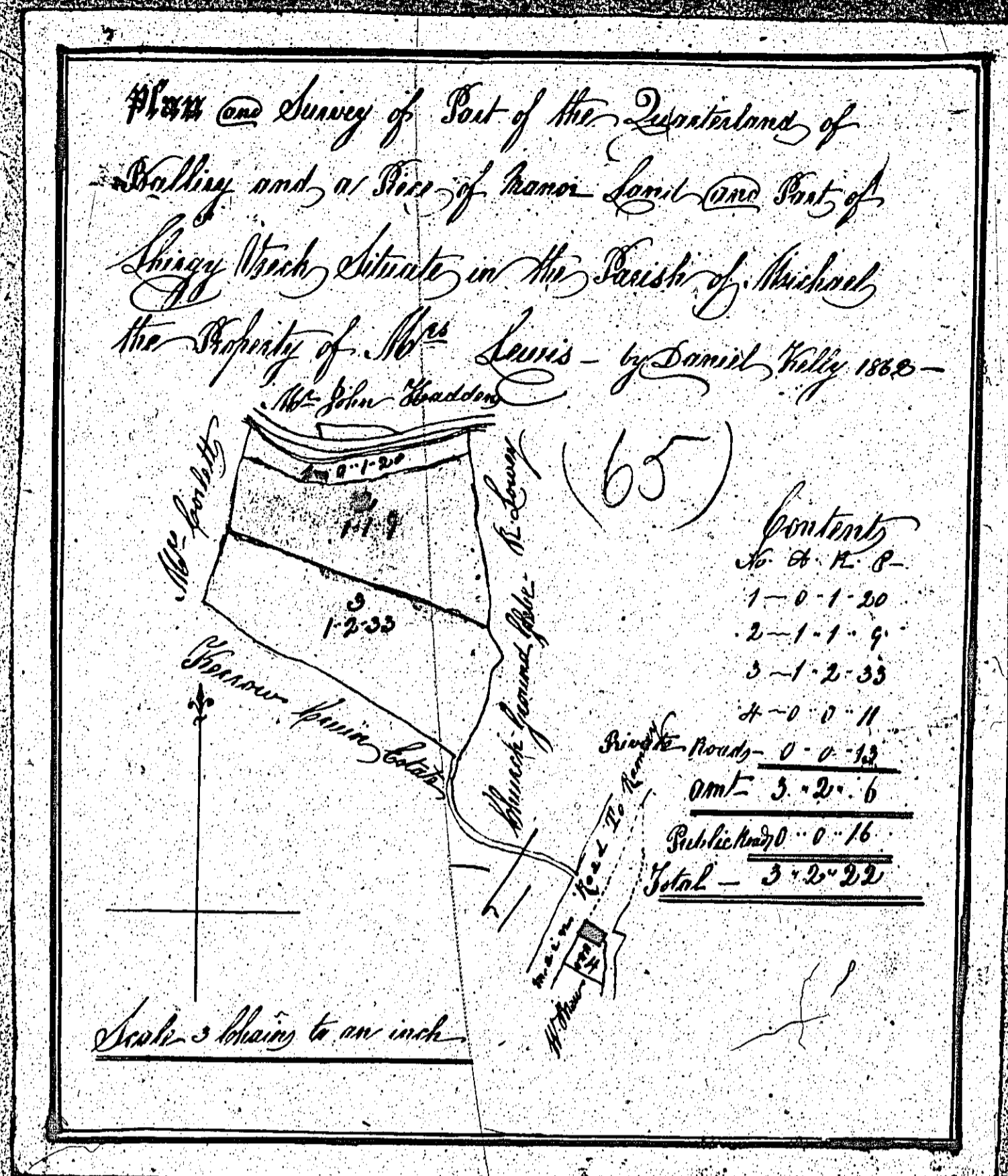


ISLE OF MAN GOVERNMENT: GENERAL REGISTRY

ASYLUM PLANS: PARISH OF MICHAEL

1:23

- 65 Original coloured
- 66 Original coloured (decorative)
- 67 Original coloured
- 68 Original coloured



The following two

plans are both

numbered

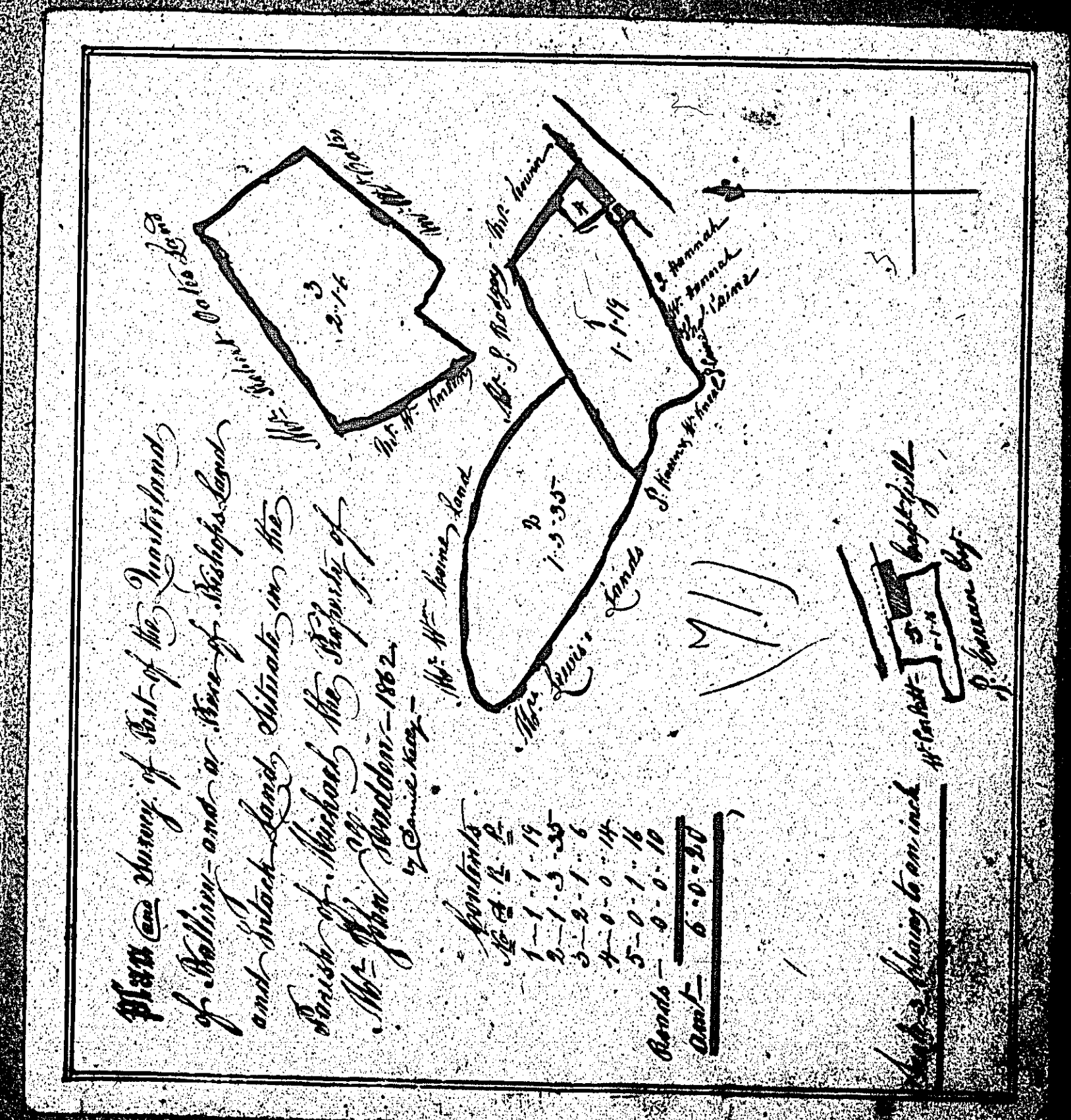
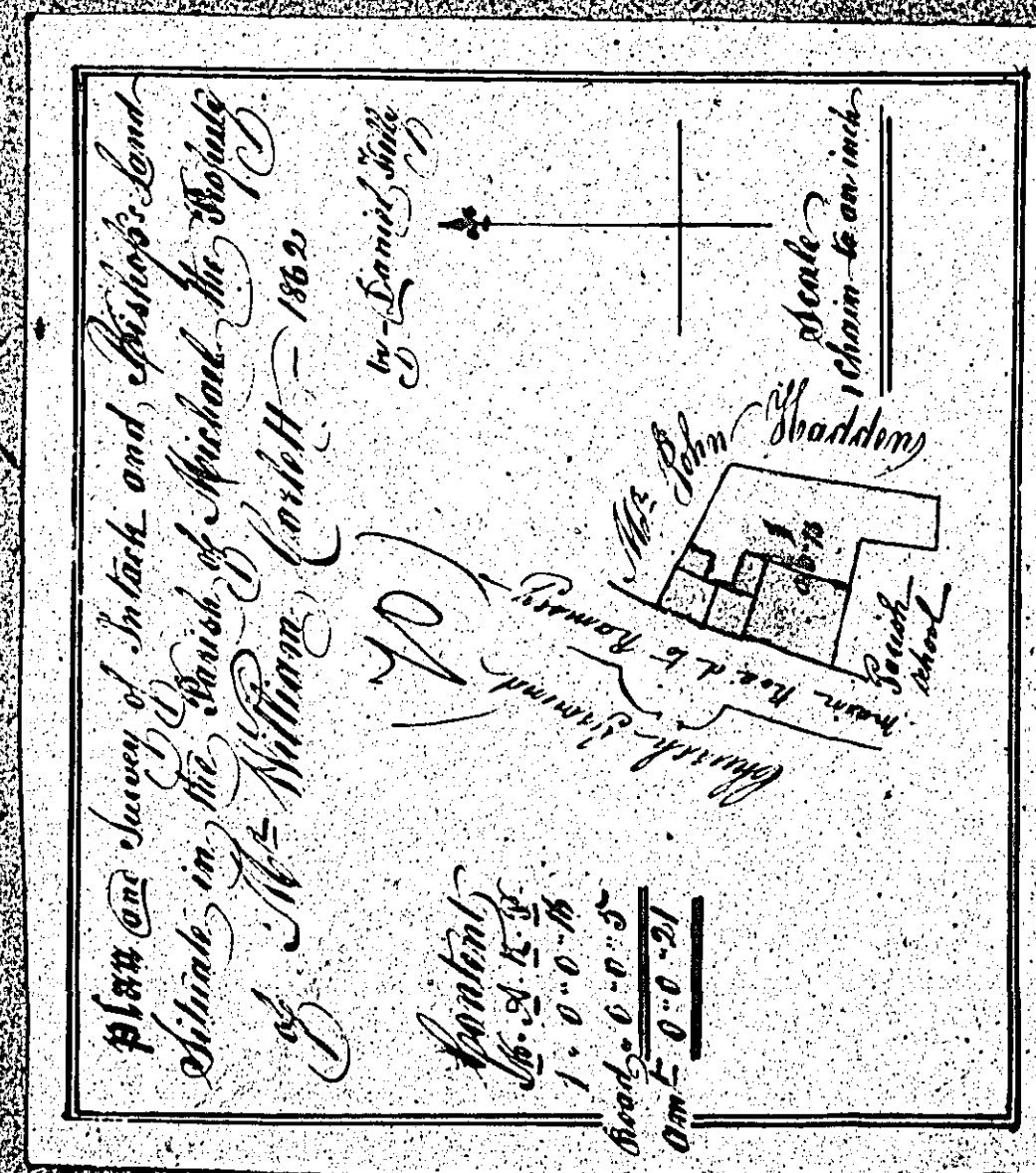
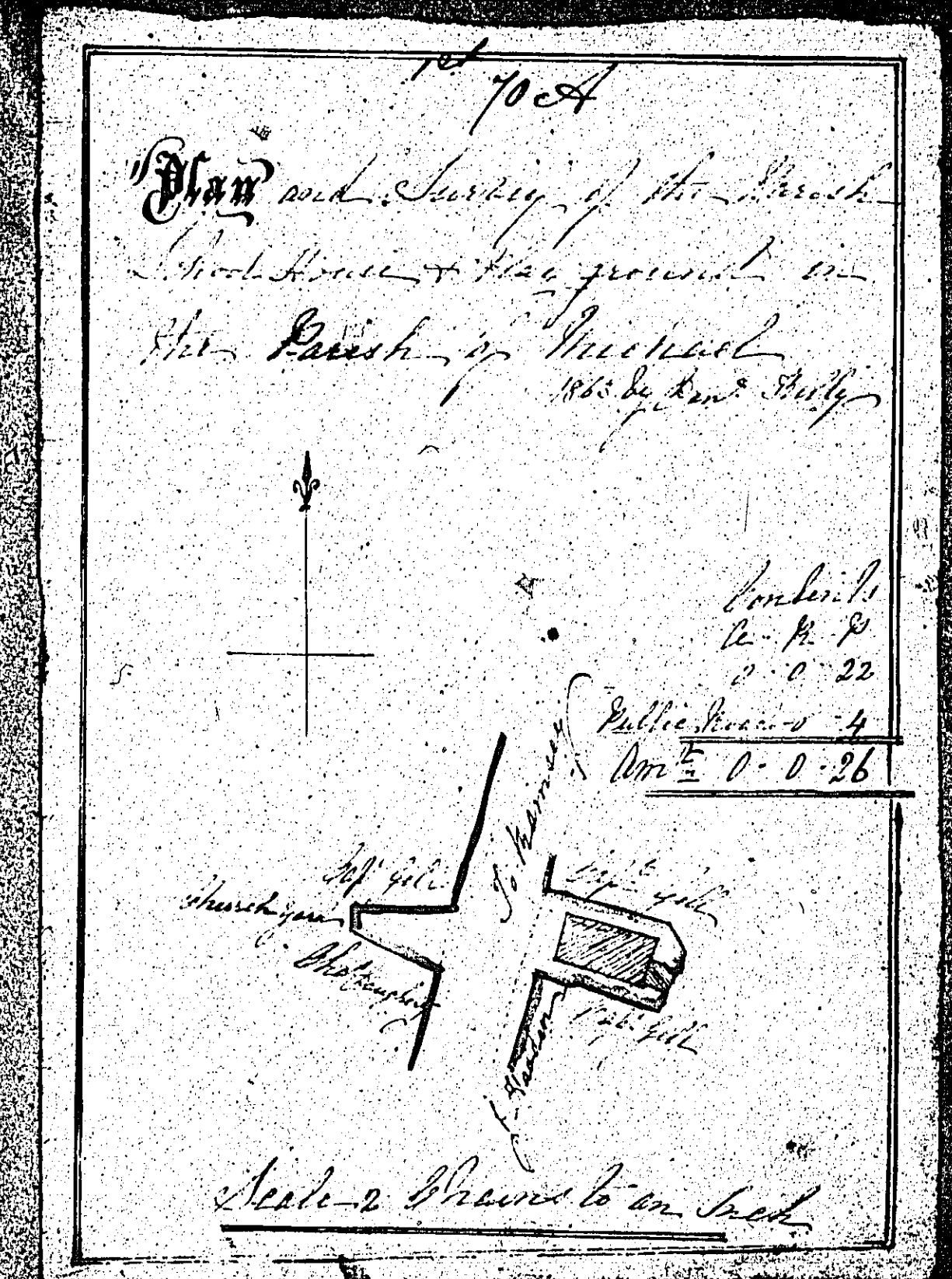
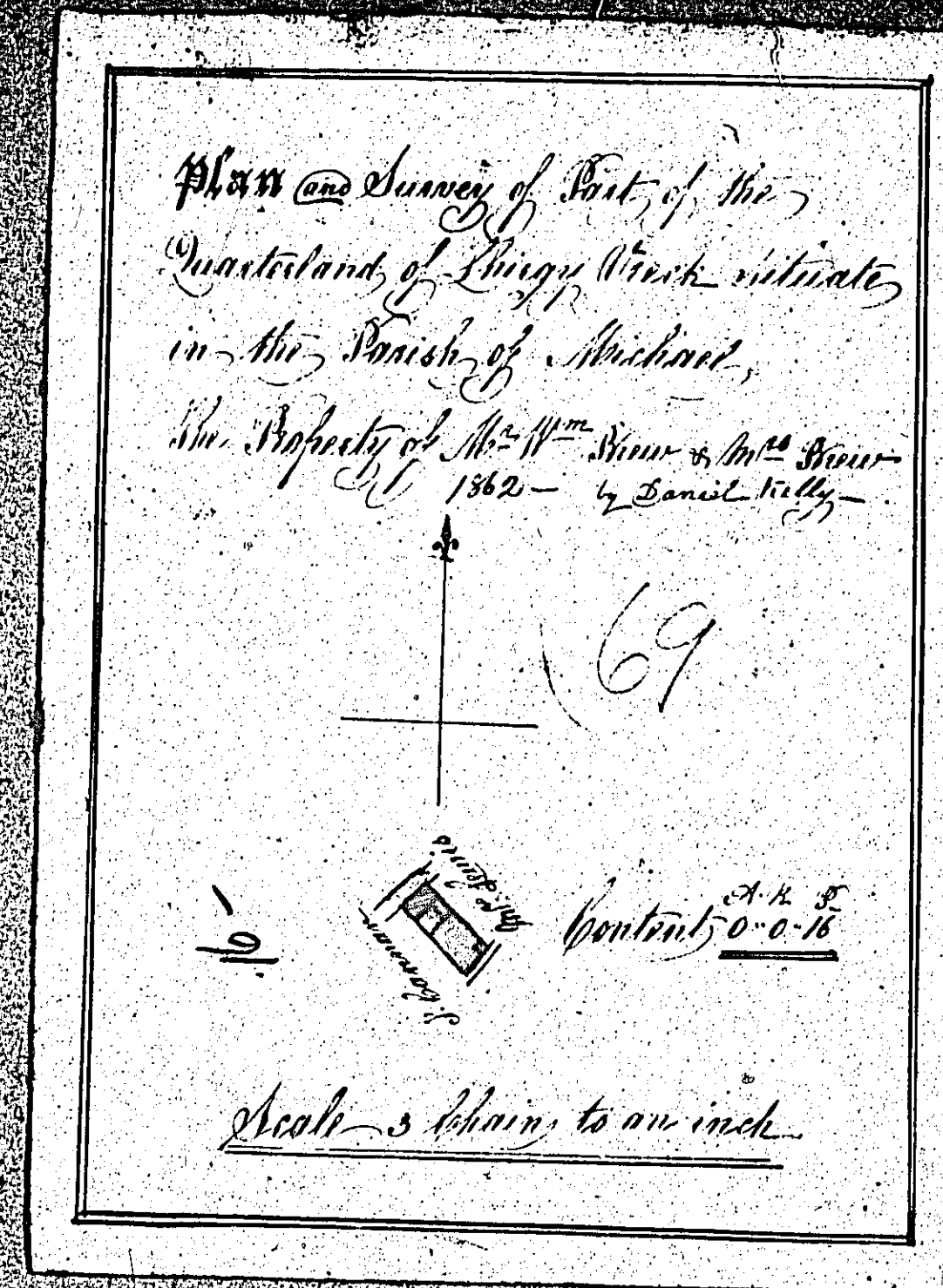
70

ISLE OF MAN GOVERNMENT: GENERAL REGISTRY

ASYLUM PLANS: PARISH OF MICHAEL

1:23

- 69 Original coloured (decorative)
- 70 Original coloured (decorative), faint
- [70] Original coloured
- 71 Original coloured (decorative)

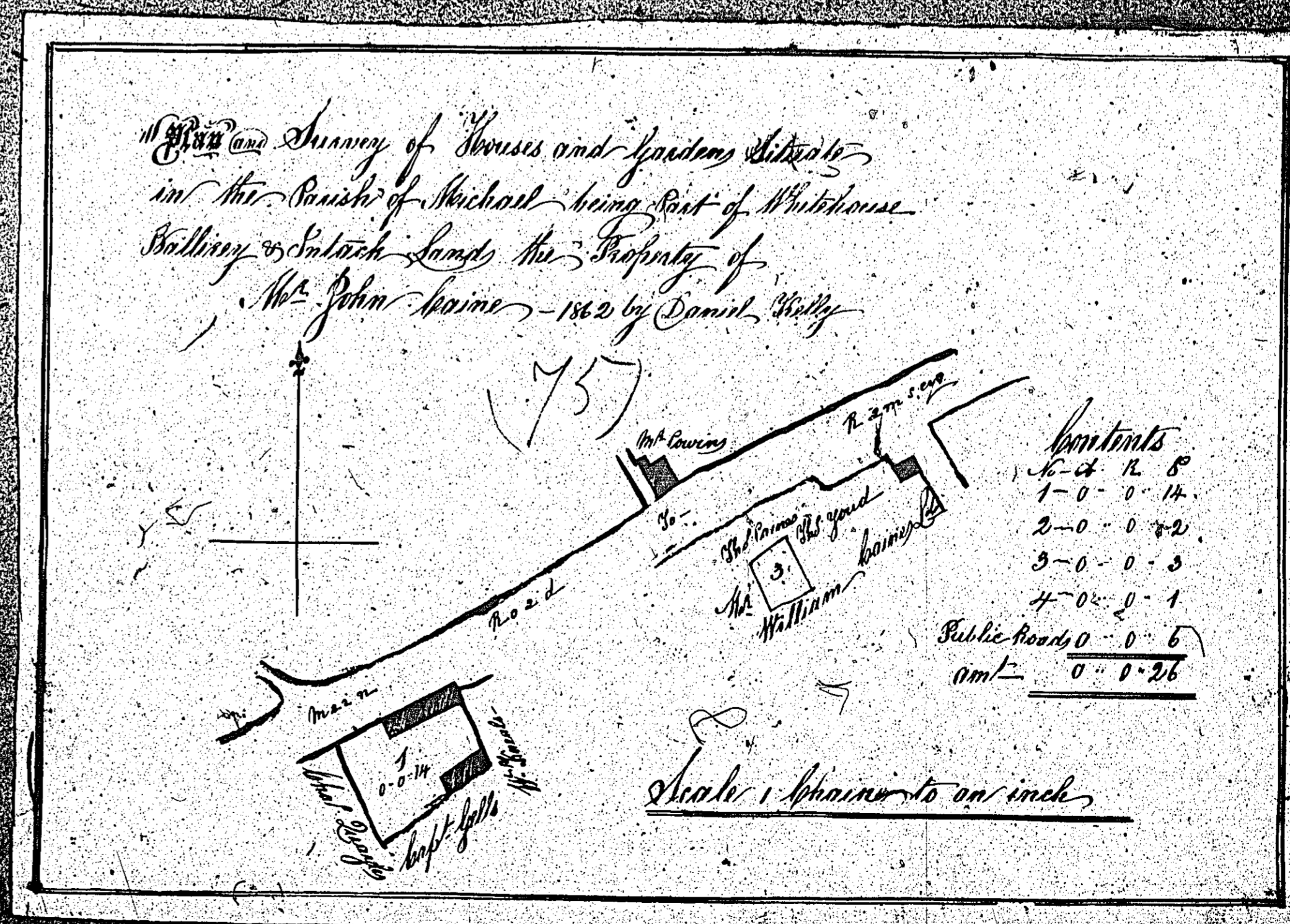
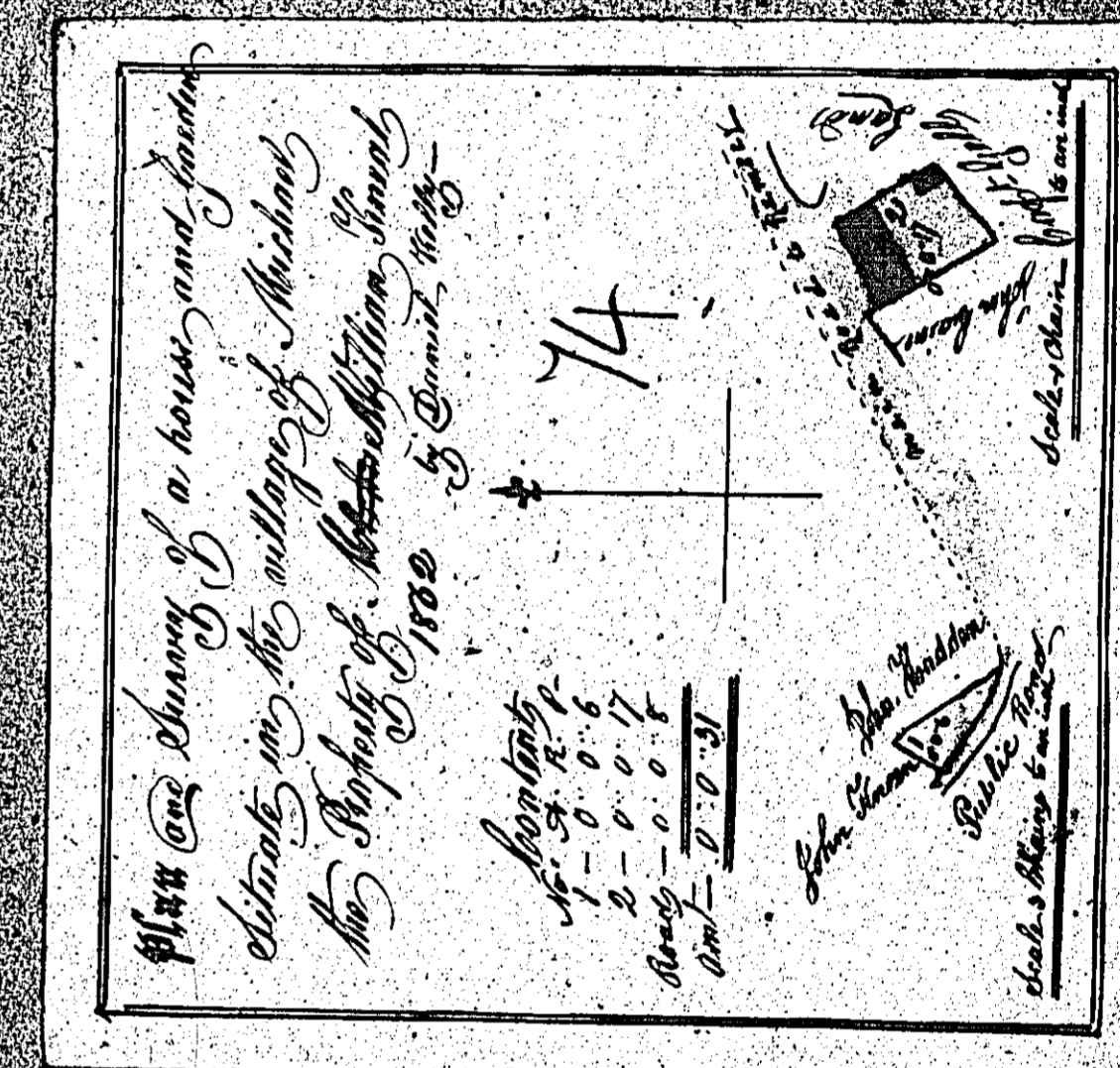
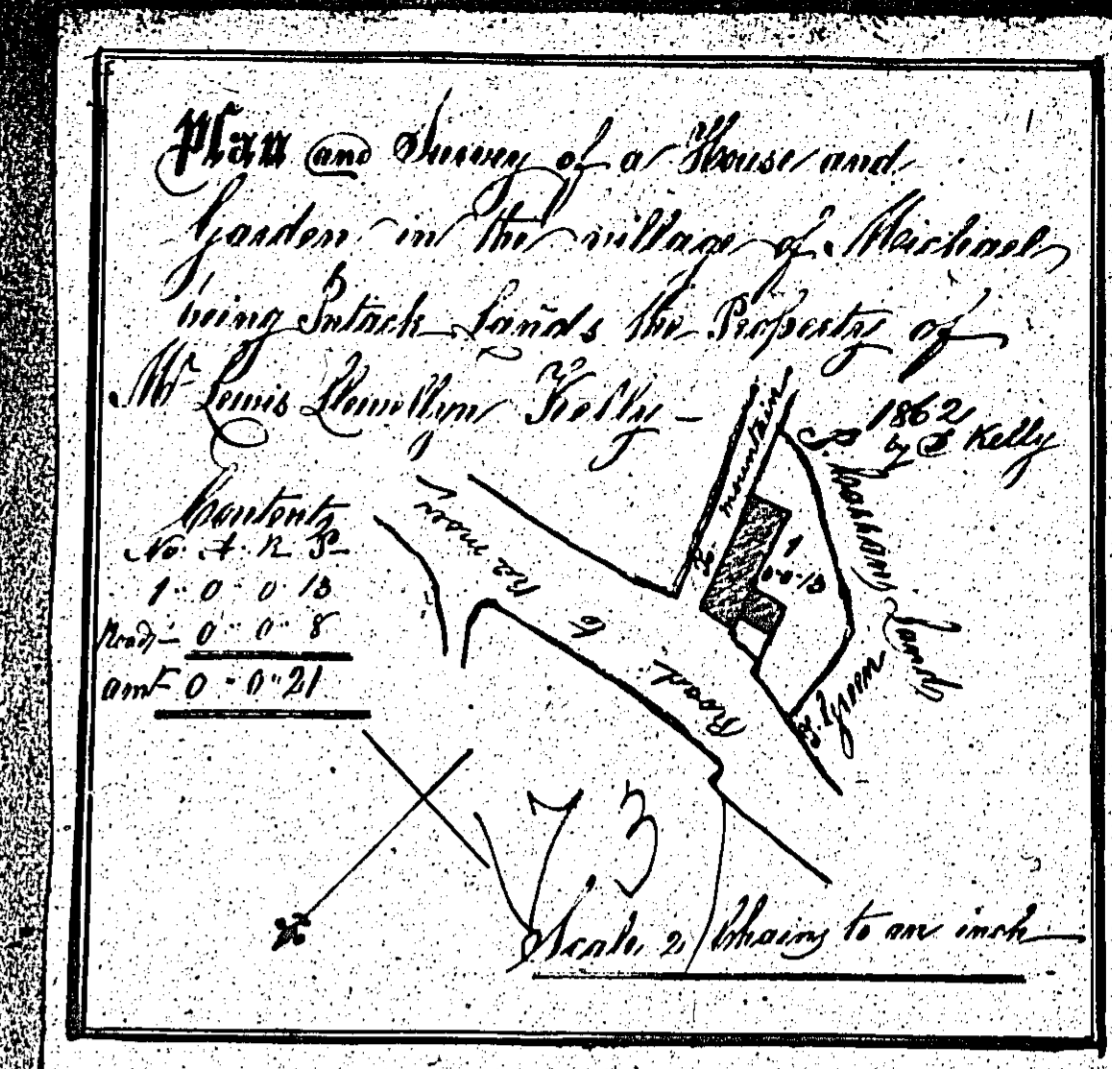
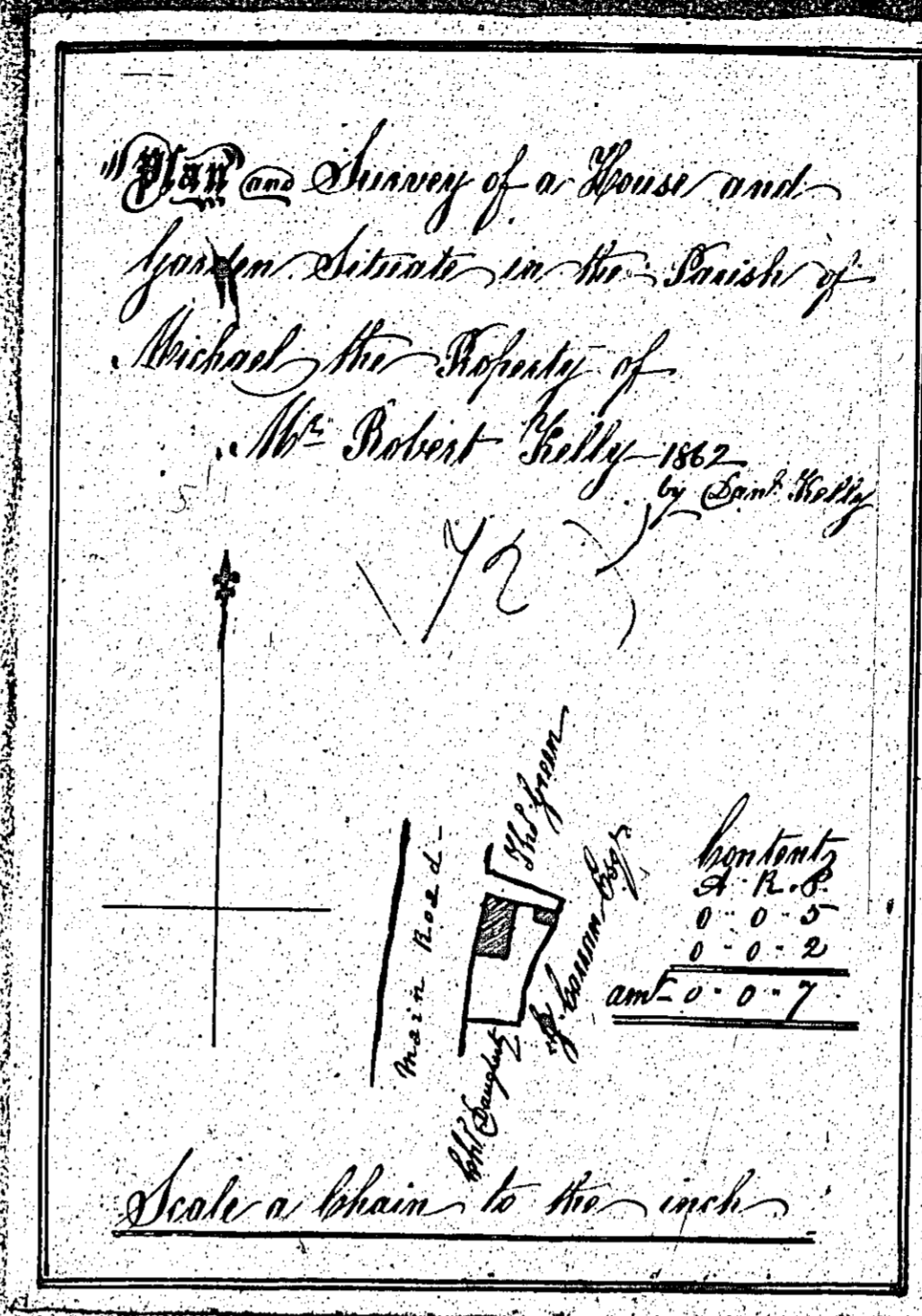


ISLE OF MAN GOVERNMENT: GENERAL REGISTRY

ASYLUM PLANS: PARISH OF MICHAEL

1:23

- 72 Original coloured (decorative)
- 73 Original coloured (decorative)
- 74 Original coloured
- 75 Original coloured (decorative)



ISLE OF MAN GOVERNMENT: GENERAL REGISTRY

ASYLUM PLANS: PARISH OF MICHAEL

Original coloured

1:23

