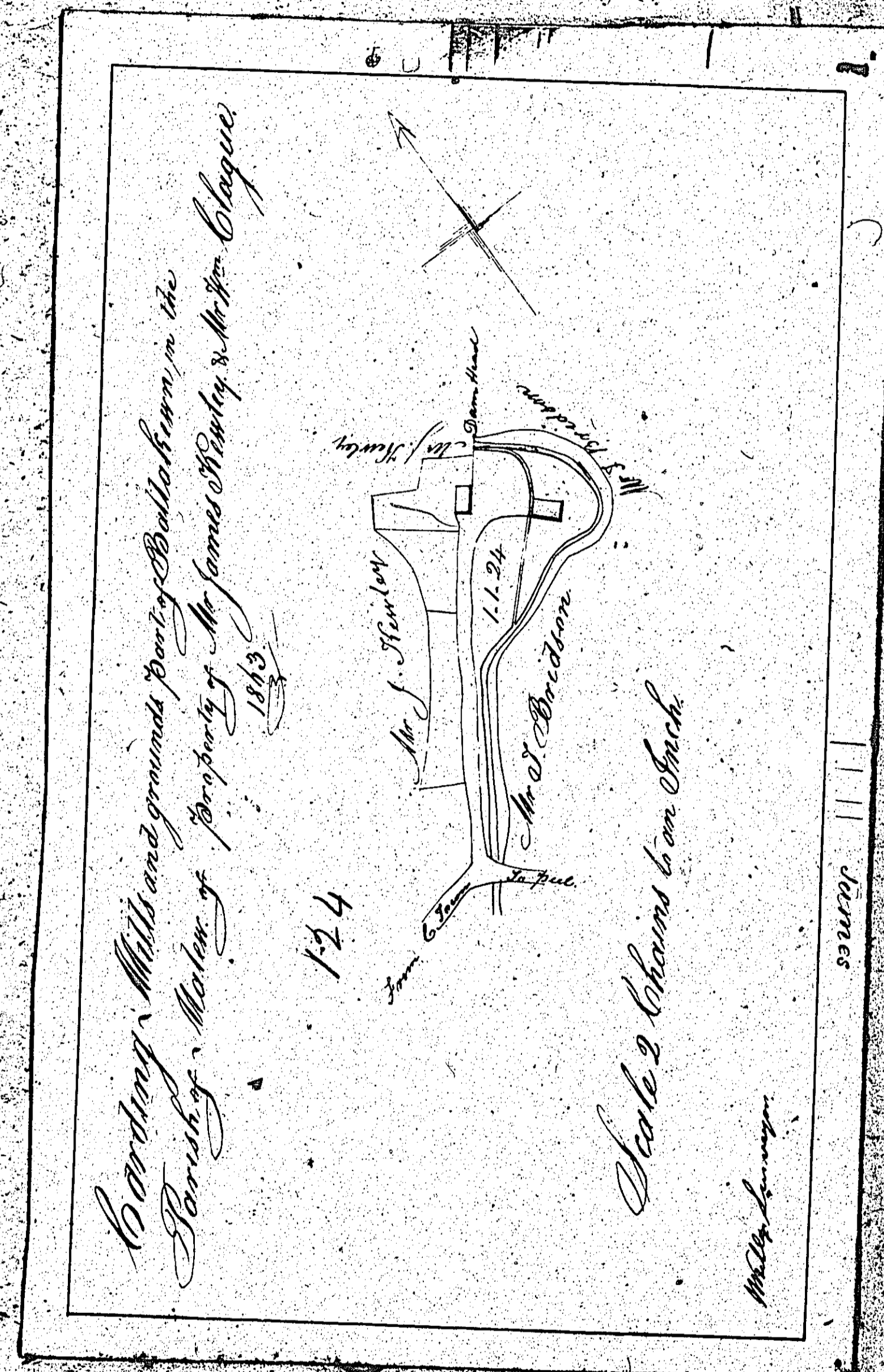


ISLE OF MAN GOVERNMENT: GENERAL REGISTRY

ASYLUM PLANS: PARISH OF MALEW

Original coloured

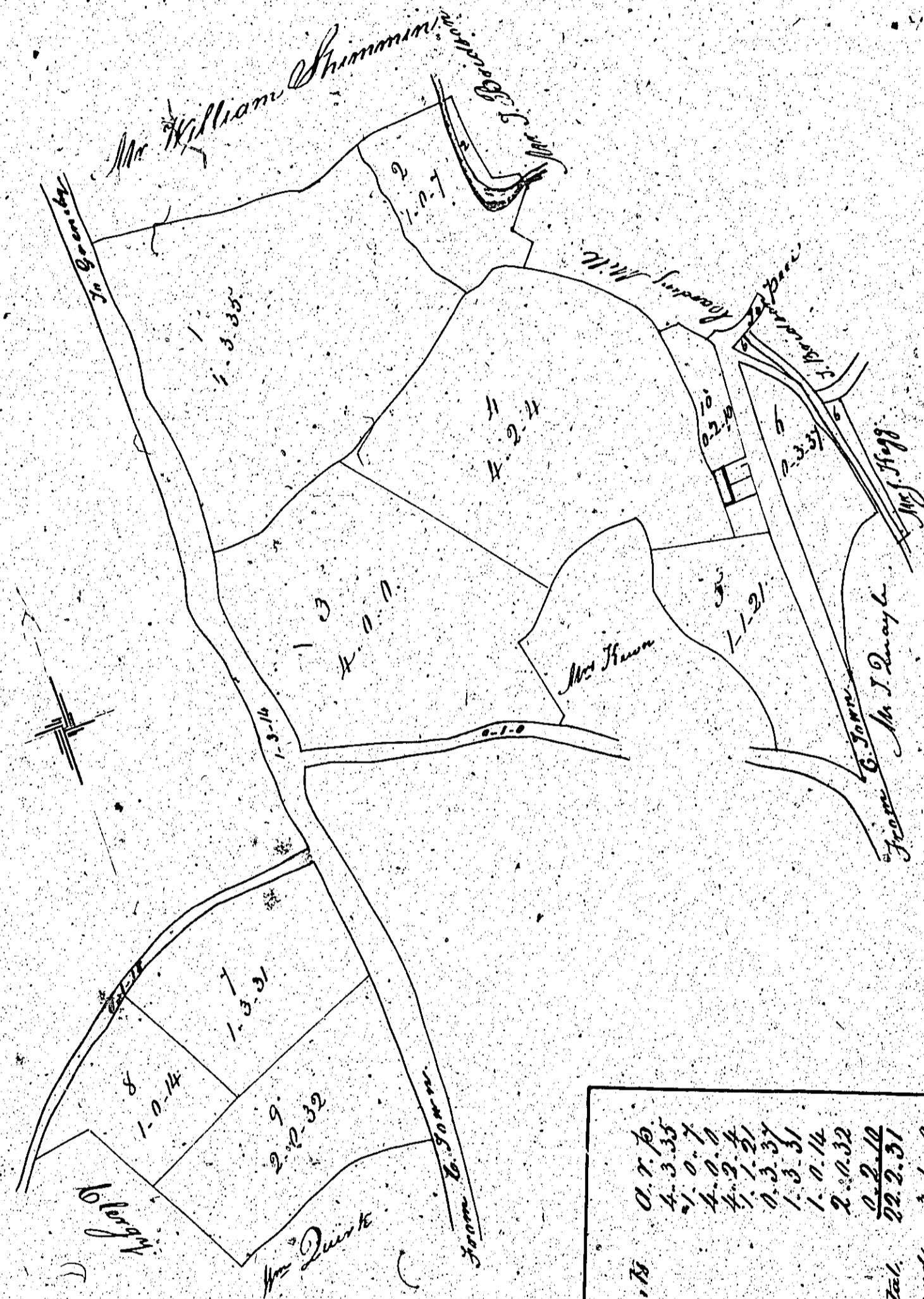
1:23



ISLE OF MAN GOVERNMENT: GENERAL REGISTRY
 ASYLUM PLANS: PARISH OF MALEW
 Original coloured, marked

1:23

Plan of Balla Kreen in the Parish of Malew the Property of Mr James Houston, 1843



1245

1	1.0.14	2	1.0.14
2	1.0.14	3	1.0.14
3	1.0.14	4	1.0.14
4	1.0.14	5	1.0.14
5	1.0.14	6	1.0.14
6	1.0.14	7	1.0.14
7	1.0.14	8	1.0.14
8	1.0.14	9	1.0.14
9	1.0.14	10	1.0.14
Total		10.0.14	
Public Road		3.1.0	

Scale 3 chains to an Inch

W. J. Quay

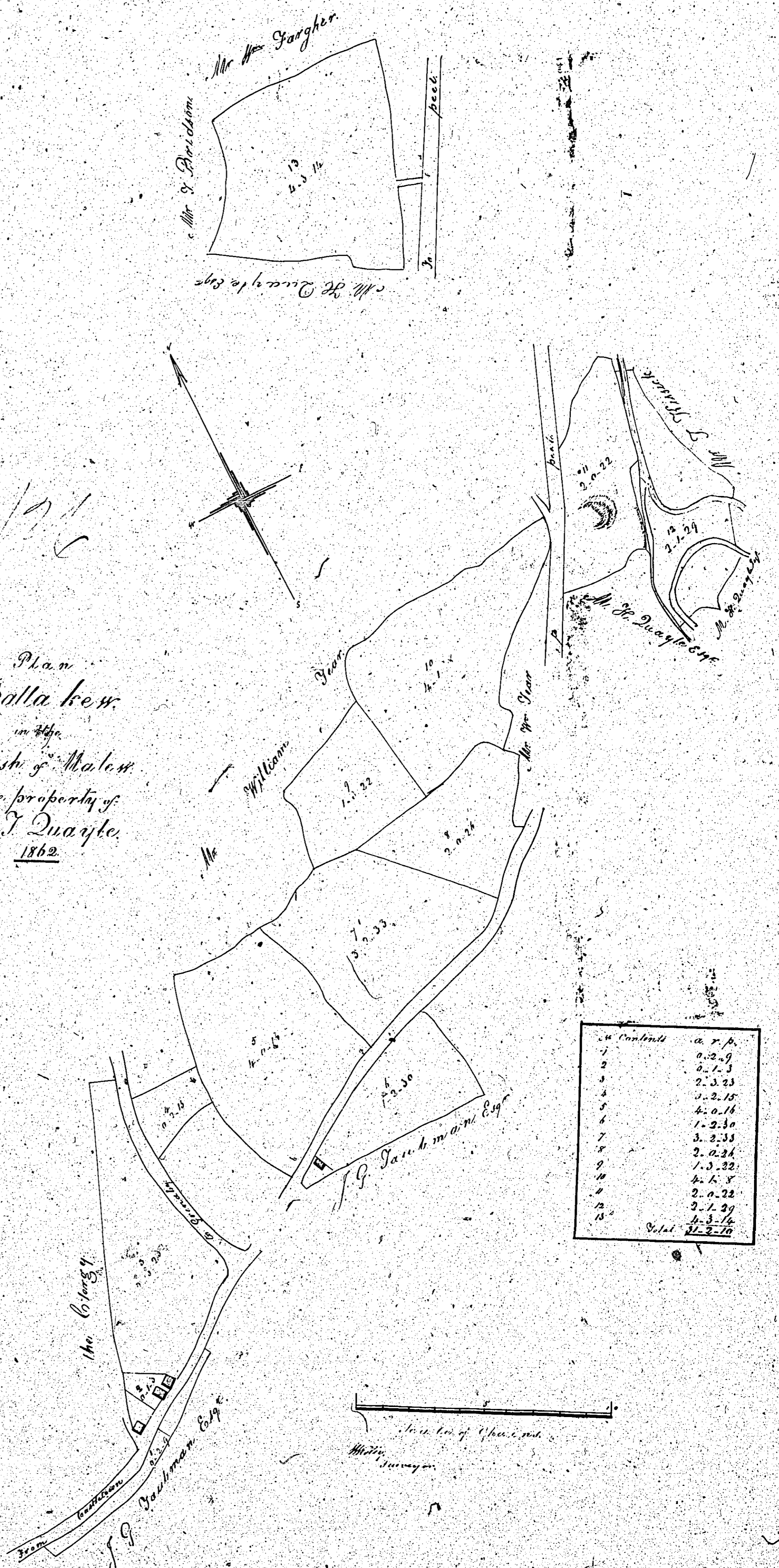
ISLE OF MAN GOVERNMENT: GENERAL REGISTRY

ASYLUM PLANS: PARISH OF MALEW

Original coloured, marked

1:23

Plan
of Ballakew
in the
parish of Malew
the property of
Mr J Quayle
1862



As to the description of the land

END OF VOLUME

NOTES

The plans have been filmed in their bound state

This will have caused some image distortion particularly where large plans go into the binding gutter and/or have been folded

Many of the larger plans are damaged

Where plans are coloured this has been noted; 'monochrome' indicates a single ink colour which may be black, brown or blue

START OF VOLUME