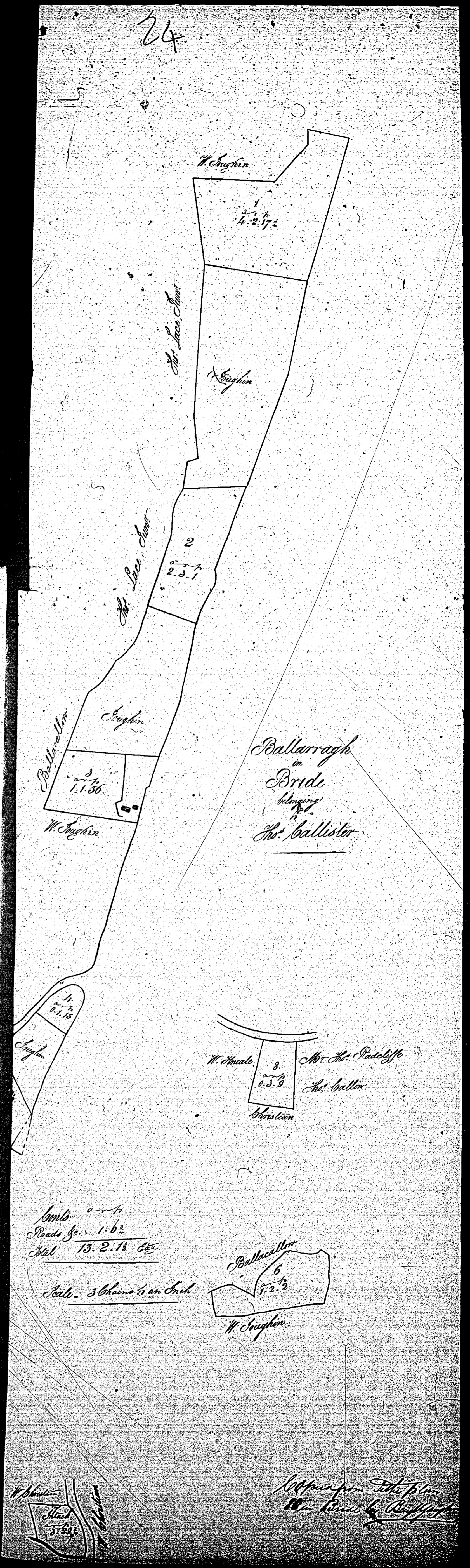


ISLE OF MAN GOVERNMENT: GENERAL REGISTRY  
ASYLUM PLANS: PARISH OF BRIDE

Original monotone

1:23



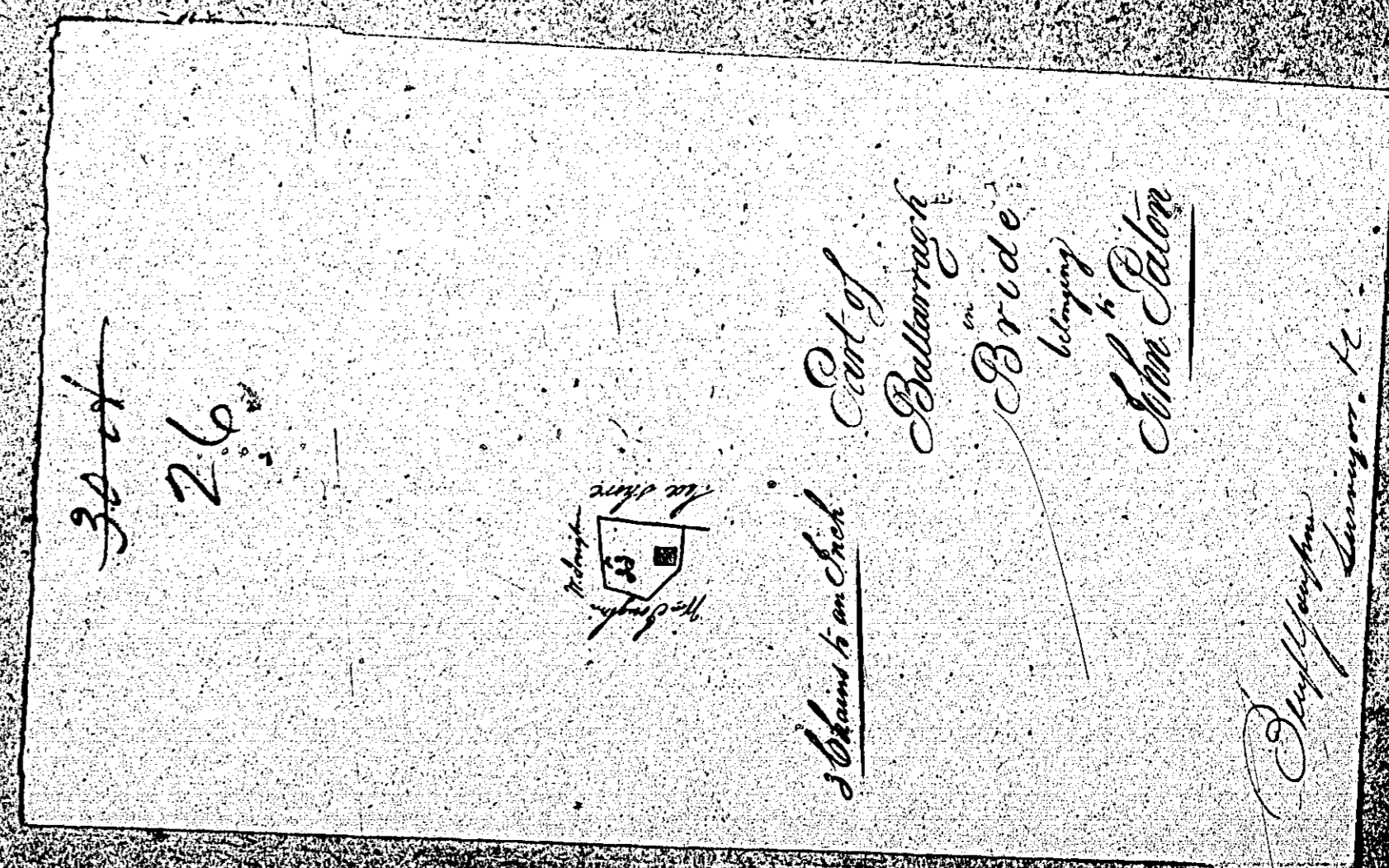
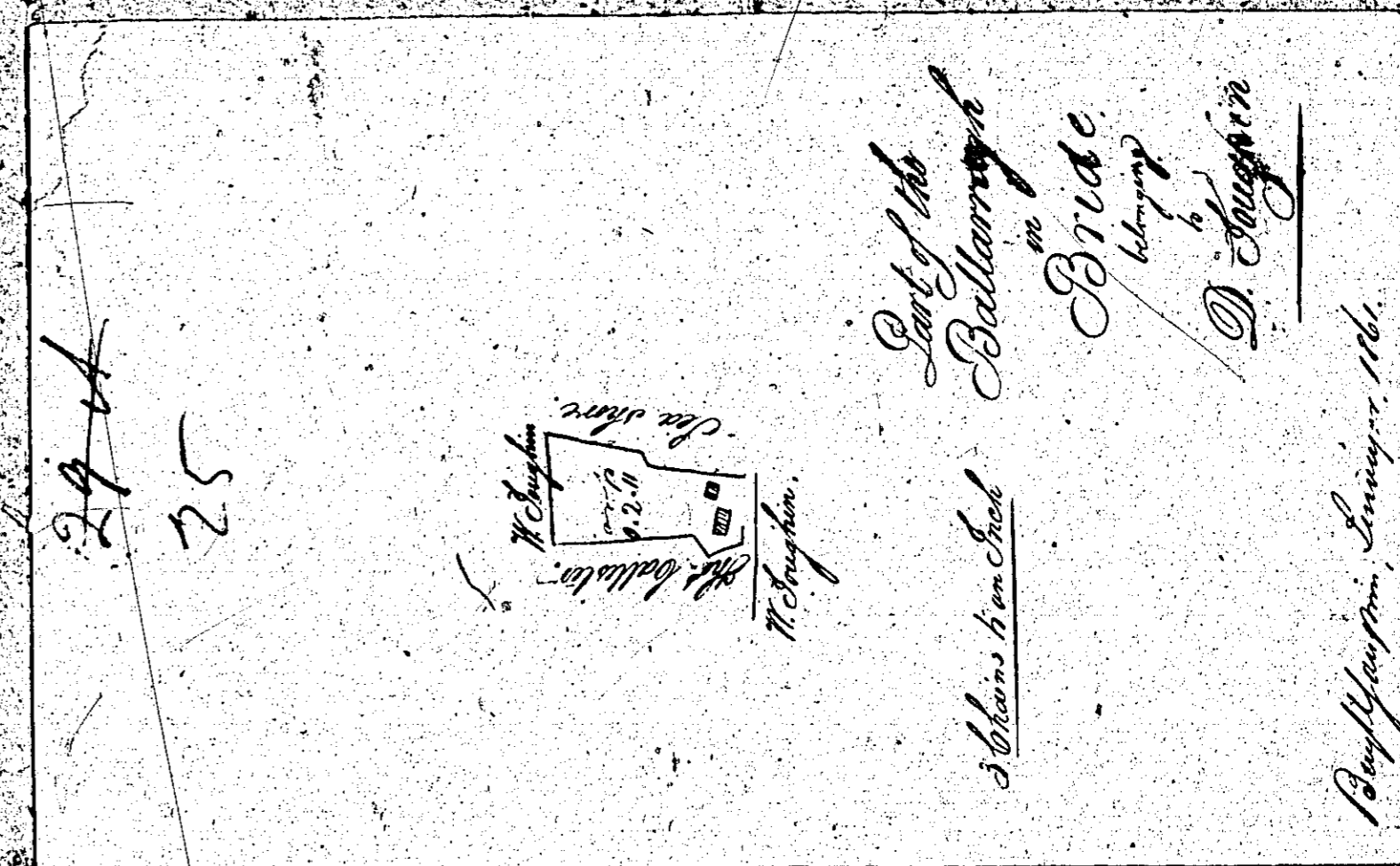
ISLE OF MAN GOVERNMENT: GENERAL REGISTRY

ASYLUM PLANS: PARISH OF BRIDE

Originals monotone

1:23

24

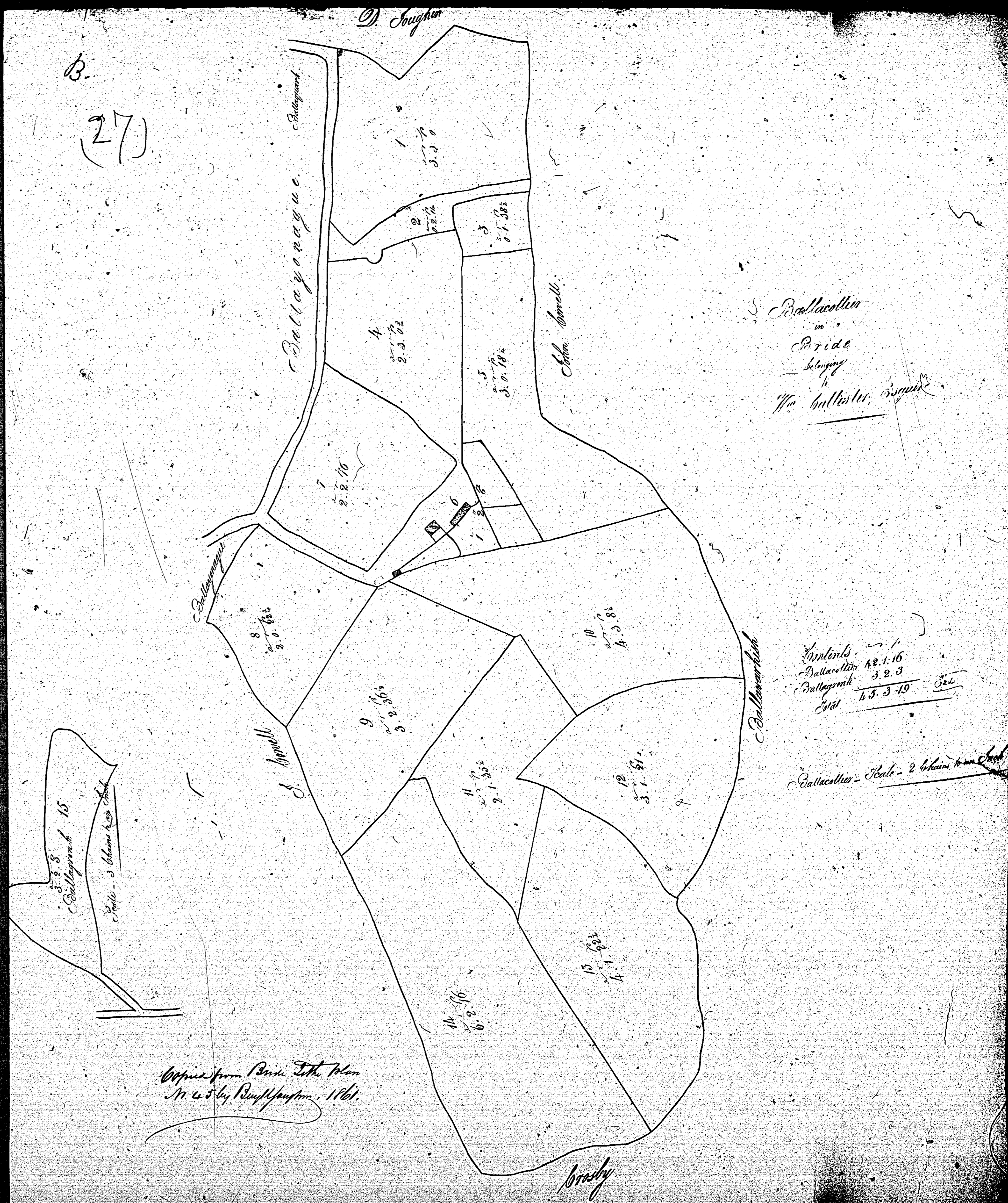


ISLE OF MAN GOVERNMENT: GENERAL REGISTRY

ASYLUM PLANS: PARISH OF BRIDE

Original monotone

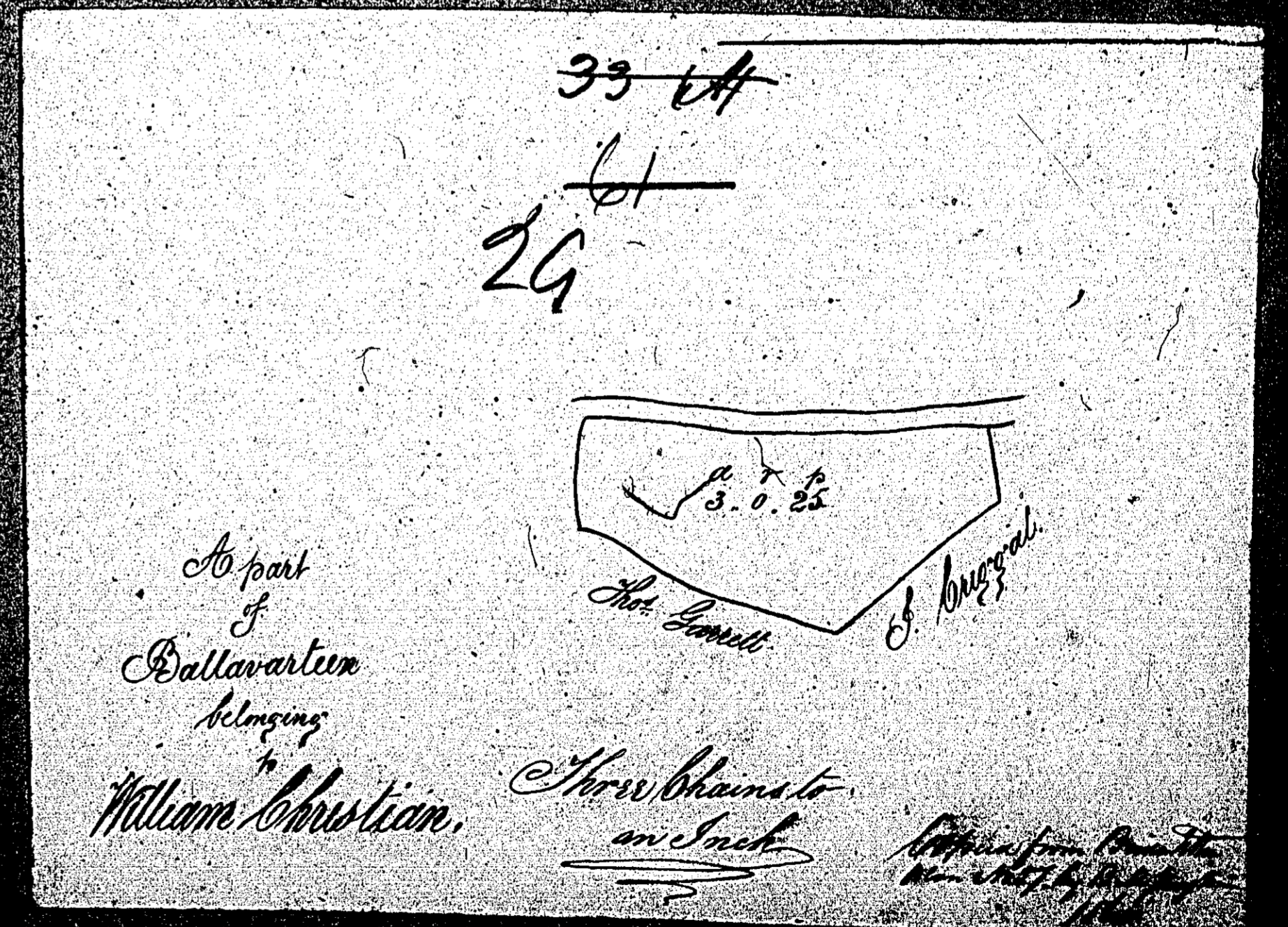
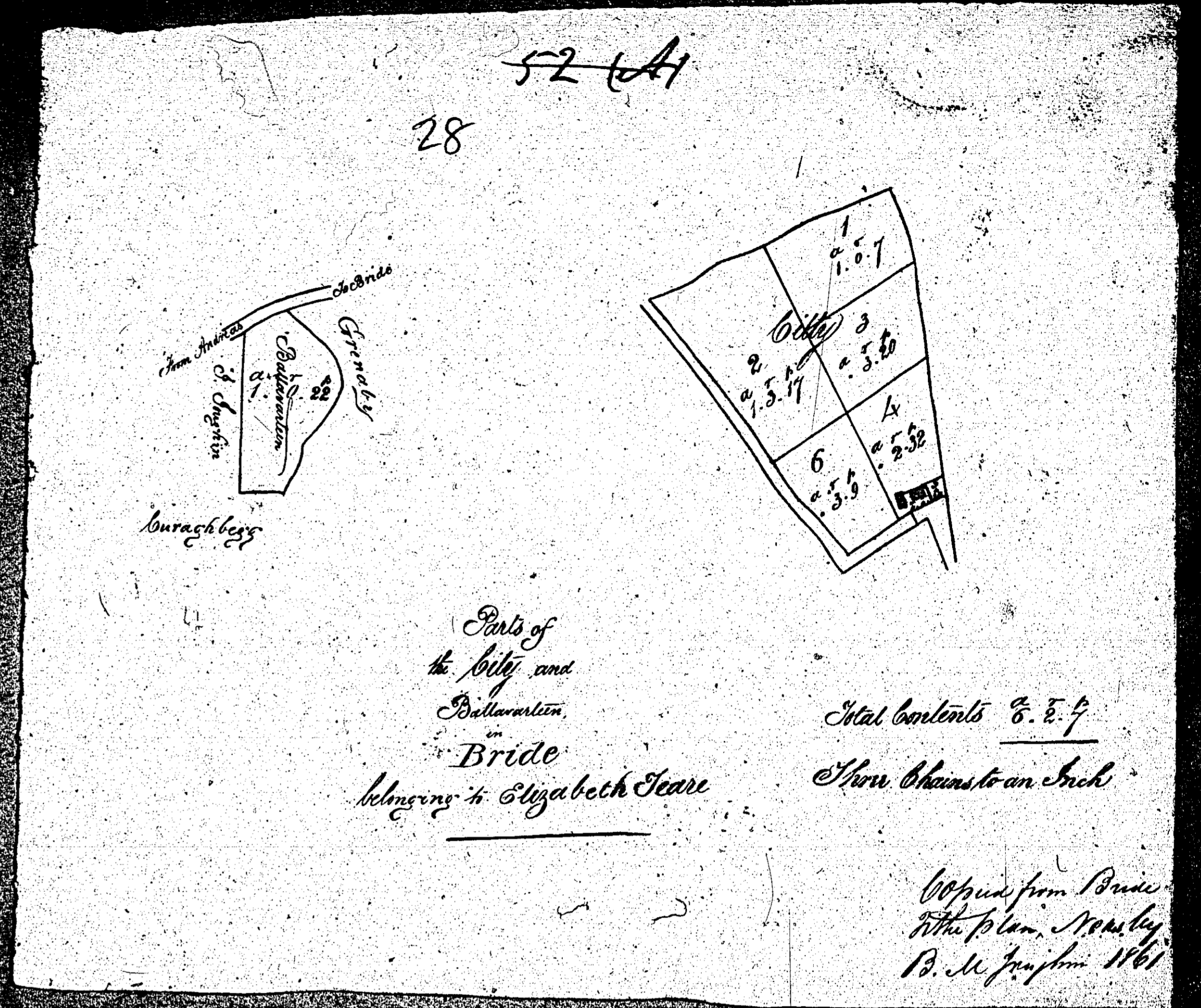
1:23



ISLE OF MAN GOVERNMENT: GENERAL REGISTRY  
 ASYLUM PLANS: PARISH OF BRIDE

Originals monotone

1:23

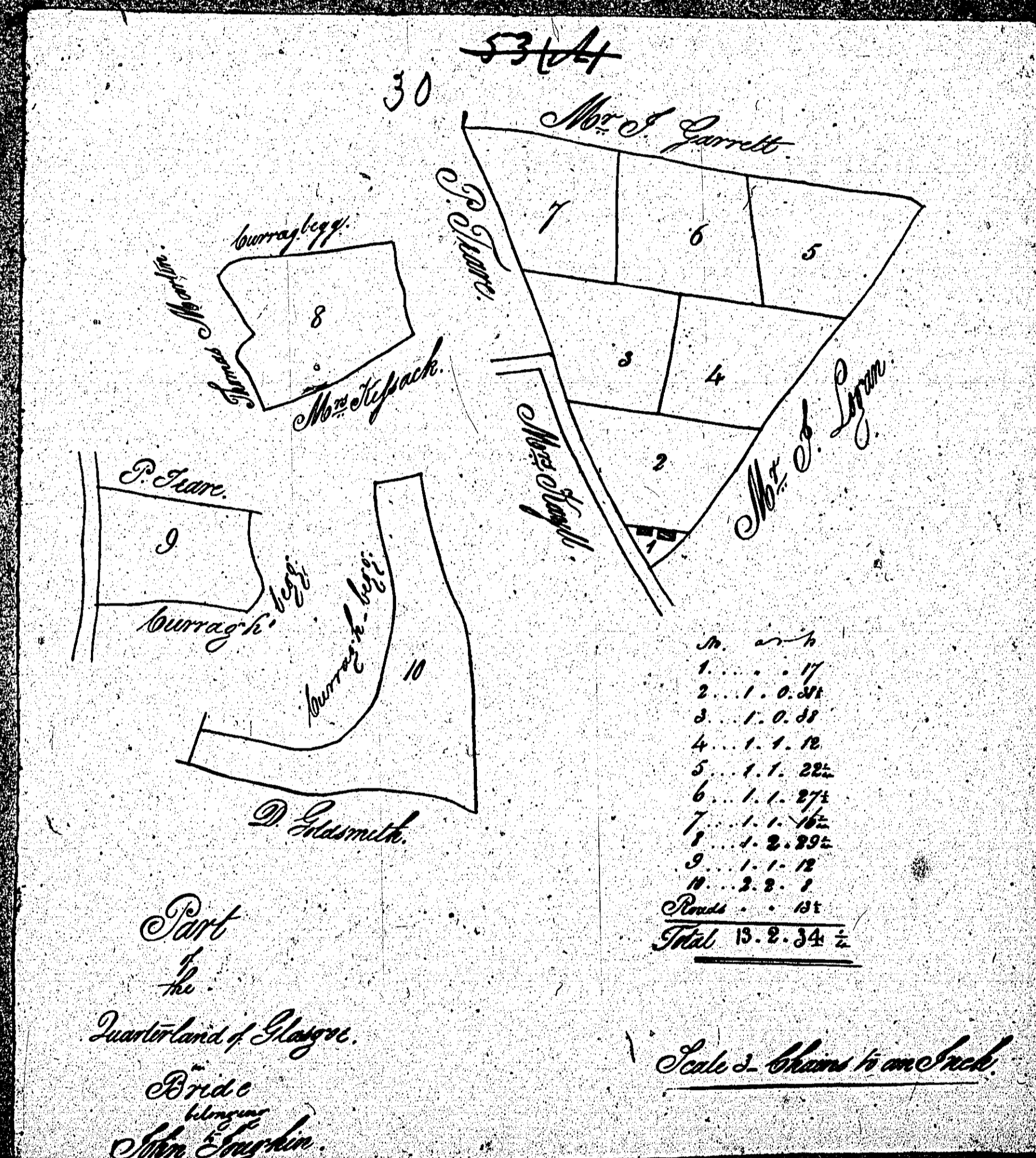


ISLE OF MAN GOVERNMENT: GENERAL REGISTRY

ASYLUM PLANS: PARISH OF BRIDE

Original monotone

1:23



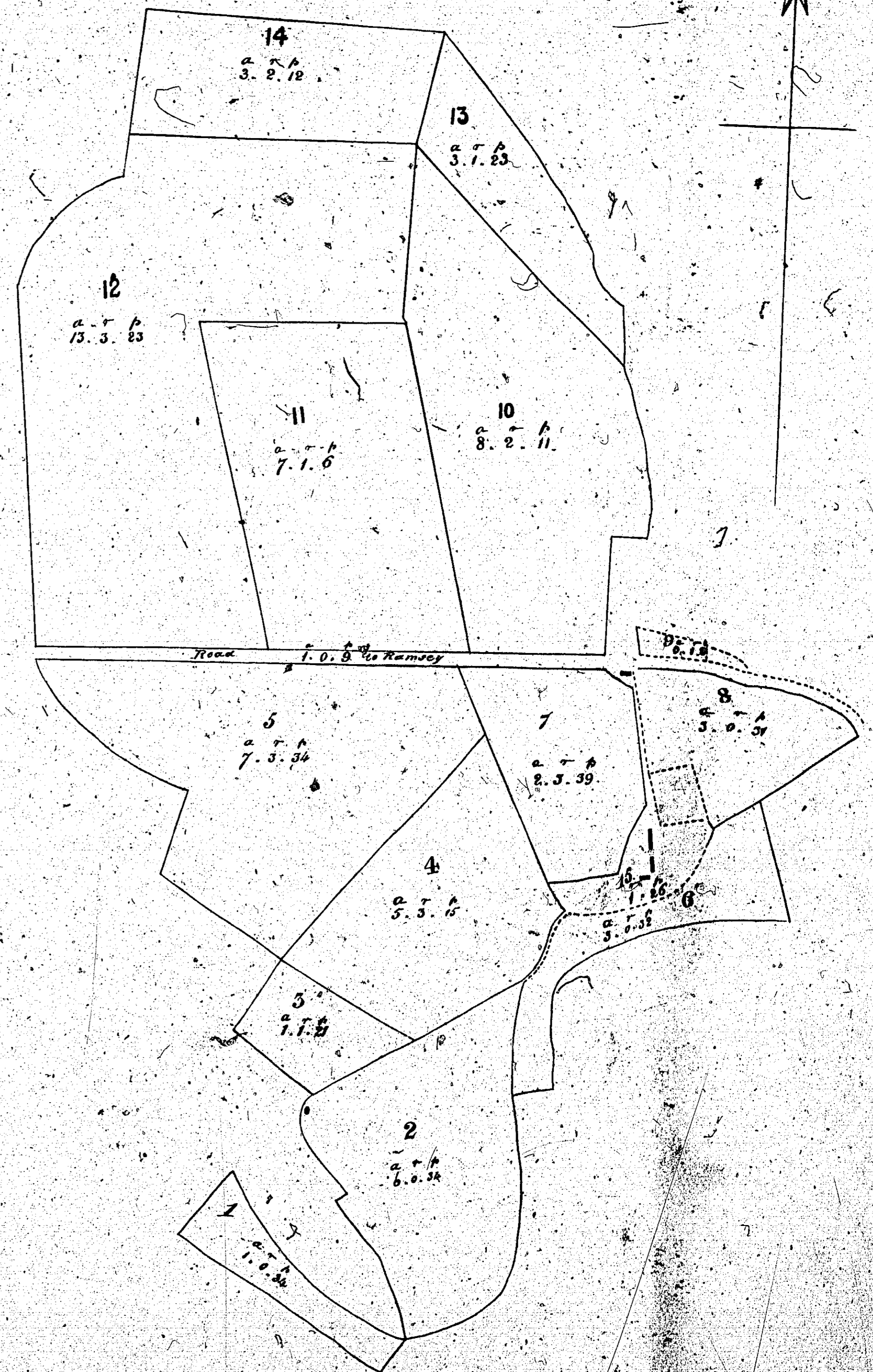
ISLE OF MAN GOVERNMENT: GENERAL REGISTRY

ASYLUM PLANS: PARISH OF BRIDE

Original monotone

1:23

*a 31*



*burial ground  
in  
Bride  
belonging  
to  
Dun. Goltsmith Esq.*

*Notes from Census, 1841  
No. 122, by R. M. Johnson, 1861.*

**CONTENTS**  
A. B.  
7. 0. 8

*John Johnson Esq.*