



**Isle of Man  
Government**

*Reillys Ellan Vannin*



# St Thomas' C E Primary School Options Presentation

Department of Education and Children  
15 July 2015

# Background – St Thomas' Existing

- ❑ Significant capacity, suitability and condition issues ... and no disabled access
- ❑ Inadequate teaching spaces – 2 in building (1 small) and 2 in remote double mobile
- ❑ Inadequate storage, practical and resource areas
- ❑ Inadequate staff room and admin accommodation
- ❑ Inadequate multi use hall space
- ❑ Poor internal and external sporting / recreational areas – playground on retail unit roof

# Ballacloan Site



# Ballacloan Site



# Ballacloan Site



# Ballacloan Site

## Sufficiency

- School hall – used for assembly, sport, dining, is of inadequate size
- Staff/administration accommodation – inadequate
- School site – inadequate/prevents further expansion and development
- No staff car parking

# Ballacloan Site

## Suitability

- Access to all class-bases is directly from the hall, disrupting use of this space
- Only the reception class has direct access to external covered play/teaching area as required
- The toilet/cloaks are remote from the teaching areas hindering supervision
- The staffroom/toilets are inadequate and there is no specific area for PPA

# Ballacloan Site

## Suitability continued

- The kitchen is cramped, poorly equipped and in the wrong location to serve the hall
- The playground is of insufficient size for the school roll/capacity
- There is no grass pitch/soft play area on site



# Ballacloan Site

## Condition

- Opened in 1908 – extended in 1965
- Difficult to maintain without significant investment – water ingress, damp, poor air tightness/insulation, high energy running cost

## Disabled Access (DDA)

- DDA audit identified need for disabled toilet and change facilities for children and staff
- Also ramping and parking provision
- All DDA works held pending development

# Fairfield Site



# Fairfield Site



# Fairfield Site



# Fairfield Site

## Sufficiency

- School hall – used for assembly, sport, dining, is of inadequate size
- School site – inadequate/prevents further expansion and development
- Staff car parking has eaten into hard play space

# Fairfield Site

## Suitability

- ❑ Classrooms are small, with net floor areas ranging between 48 and 55m<sup>2</sup> – these are barely adequate for smaller class sizes up to 25, and are too small for larger groups
- ❑ Classrooms are spread across the school in four separate areas, separated by stairs, leading to management difficulties
- ❑ Natural light and ventilation within classrooms generally is not good, with overheating in summer
- ❑ Access/proximity of classrooms to toilets is poor – the classrooms at first floor level have to pass through the adjacent hall area to access the toilets, and through a classroom (FF6) to the main stairs to the ground floor.

# Fairfield Site

## **Suitability** continued:

- ❑ Classrooms at ground floor level have no separate activity areas
- ❑ Ancillary areas for ICT, group teaching, etc. have been provided, but are generally of poor quality being internal spaces created from corridors etc.
- ❑ The hall is inadequate for teaching the sports curriculum and its shared use for assembly and dining restricts usage
- ❑ Staff toilet and PPA facilities are inadequate

# Fairfield Site

## **Suitability** continued:

- ❑ The playground is sloping and of insufficient size for school roll/capacity, necessitating split play times
- ❑ There is no grass pitch/soft play area on the site



# Fairfield Site

## Condition

- Opened in 1874
- Difficult to maintain without significant investment – water ingress, damp, poor air tightness/insulation, high energy running cost

## Disabled Access (DDA)

- DDA audit confirmed 'only a very limited part of this school is accessible'
- Lift required to 3 levels of school – difficult to achieve due to split stairway/change in levels; accommodation would be lost to incorporate
- All DDA works held pending development

# Henry Bloom Noble School Site



# Henry Bloom Noble School Site

---

- ❑ New two form entry
  - ❑ 14 class bases – nominal 420 mainstream capacity based on 30/class
  - ❑ Incorporation of Special Education Needs (SEN) unit
  - ❑ Accessible facilities for Youth and Community
  - ❑ Development on part of Old Noble's Hospital site, cleared in 2010/11 – includes conversion of retained ward block
-

# Henry Bloom Noble School - Visualisation



# Henry Bloom Noble School Ground Floor

---

- ❑ Reception class area (2 class bases) with dedicated activity area, cloaks, toilets and direct access to dedicated external play and teaching area
  - ❑ Key Stage 1 class area (4 class bases including stores) with shared activity area, cloaks, toilets and resource store, with direct access from class bases to play and teaching area, with canopies
  - ❑ SEN unit comprising two teaching areas, activity area, quiet area, sensory room, disabled change/toilet area, office, stores and dedicated entrance/access to garden area
-

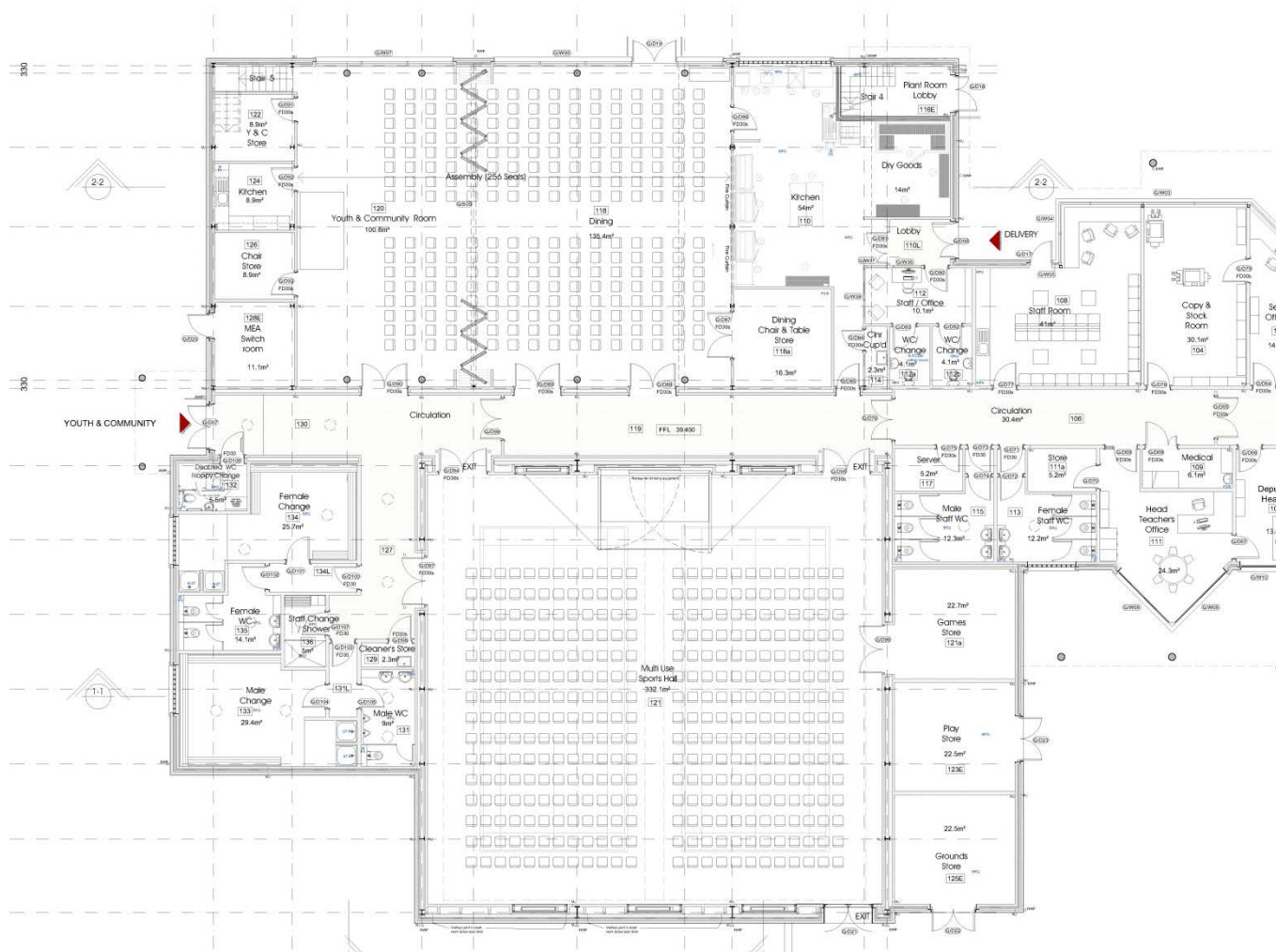
# Henry Bloom Noble School Ground Floor



# Henry Bloom Noble School Ground Floor

- ❑ Library/learning resources area, including store
- ❑ School core facilities comprising entrance/lobby, head teacher's office, deputy head teacher's office, reception/administration office, reprographics room, staff room, staff toilets, medical room
- ❑ Sports hall (2 court size) changing rooms, internal and external sports stores and ground store
- ❑ Assembly hall with sub-division to create separate dining area adjacent kitchen servery and youth/community area
- ❑ Kitchen – re-heat facilities, chilled / dry goods storage, staff welfare area, and dedicated entrance for staff/deliveries

# Henry Bloom Noble School Ground Floor





# Henry Bloom Noble School First Floor

---

- ❑ Key Stage 2 class area (8 class bases including stores) with shared activity areas, central cloaks area, toilets, resources store and lift/stair access from ground floor
  
- ❑ Plant room

# Henry Bloom Noble School First Floor



# Henry Bloom Noble School

## External Works – Rear Play Areas

---

- ❑ Terraced play area solution to circa 9.3m fall from Eastern corner of the site
  - ❑ Key Stage 1 playground with access from Key Stage 1 class bases
  - ❑ Three distinct terraced play areas with ramp access
  - ❑ Key Stage 2 playground
  - ❑ Artificial pitch area
  - ❑ Grass pitch area
  - ❑ Landscaping generally
-

# Henry Bloom Noble School External Works – Rear Play Areas



# Henry Bloom Noble Site – Progress Photo



# St Thomas's at Henry Bloom Noble Campus

---

- ❑ Conversion and extension of former part retained Post Graduate Medical Centre building
  - ❑ Does not form part of Henry Bloom Noble School under construction – currently being used as site office
  - ❑ Potential for separate 4 class (100-120 capacity) St Thomas' School on the site, with own separate identity
  - ❑ Proposed sharing of core Henry Bloom Noble School facilities – halls for sport, assembly, dining, performance and the excellent external play areas
-

# St Thomas's at Henry Bloom Noble Campus

## Initial feasibility scheme

### ❑ Ground floor

Reception area

Head's office

Admin

Learning Resources / IT

Reception class

Key Stage 1 Class

Activity area

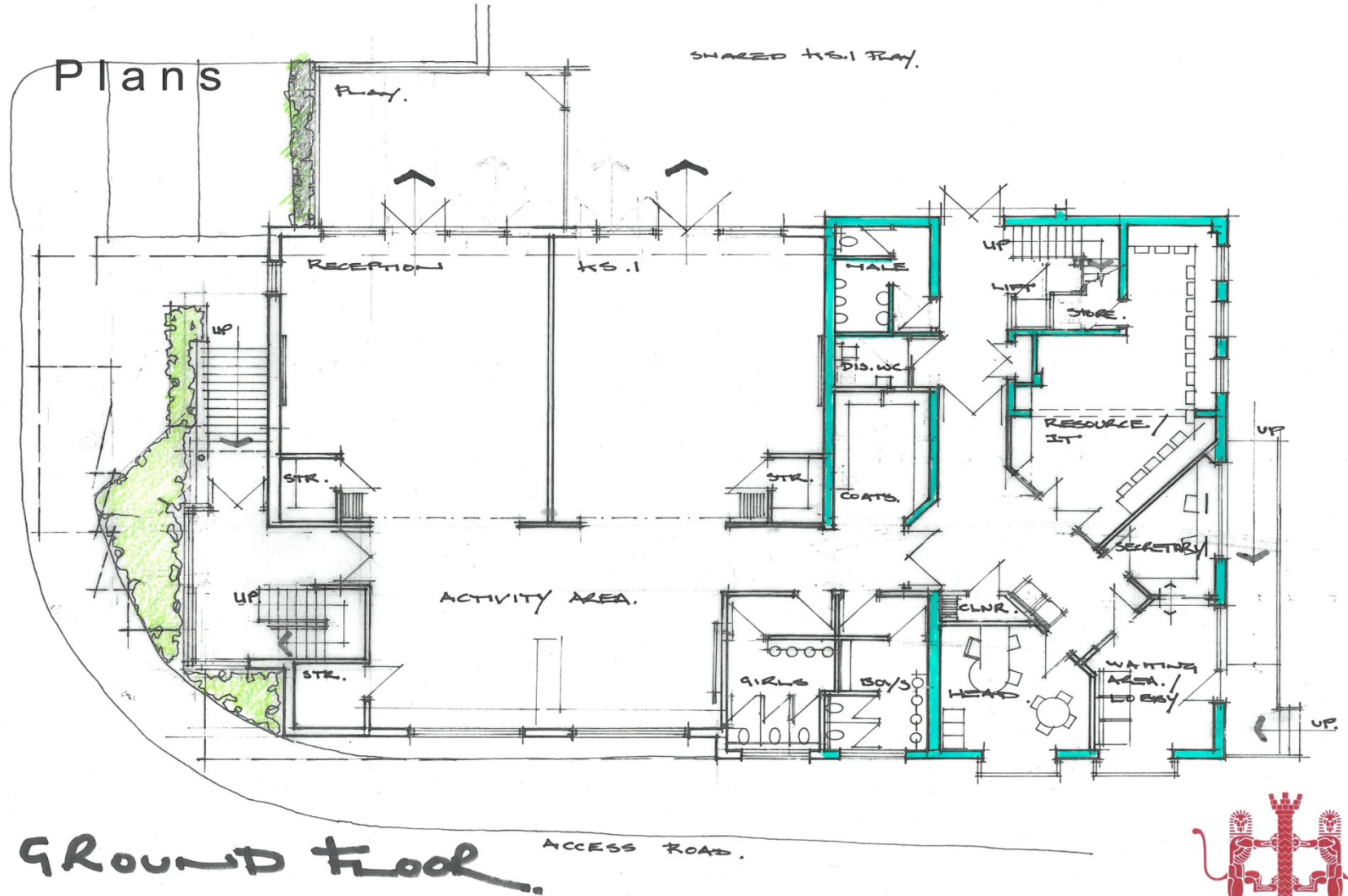
### ❑ First floor

Staff room

2 Key Stage 2 classrooms

Activity area

# St Thomas's at Henry Bloom Noble Campus



## GROUND FLOOR.

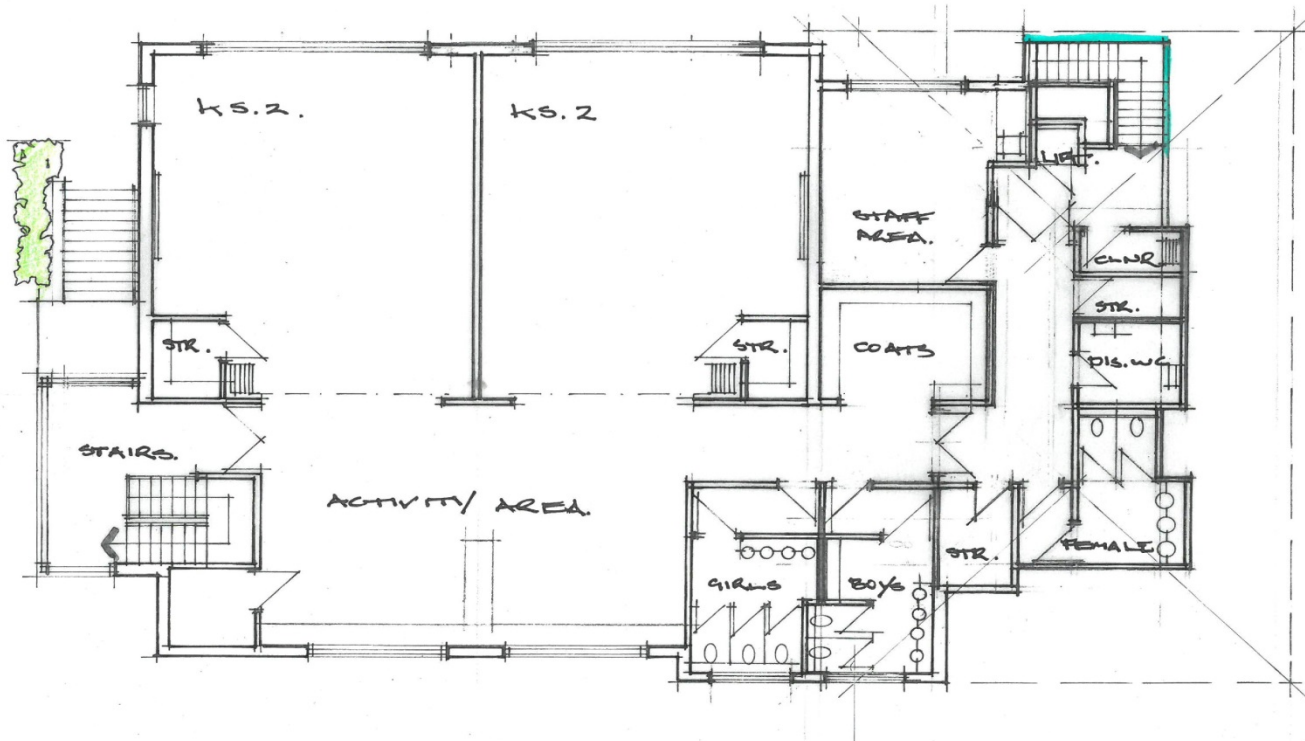
SC1290. SH.  
APPROX. SCALE 1:100 @ A3.





# St Thomas's at Henry Bloom Noble Campus

## Plans



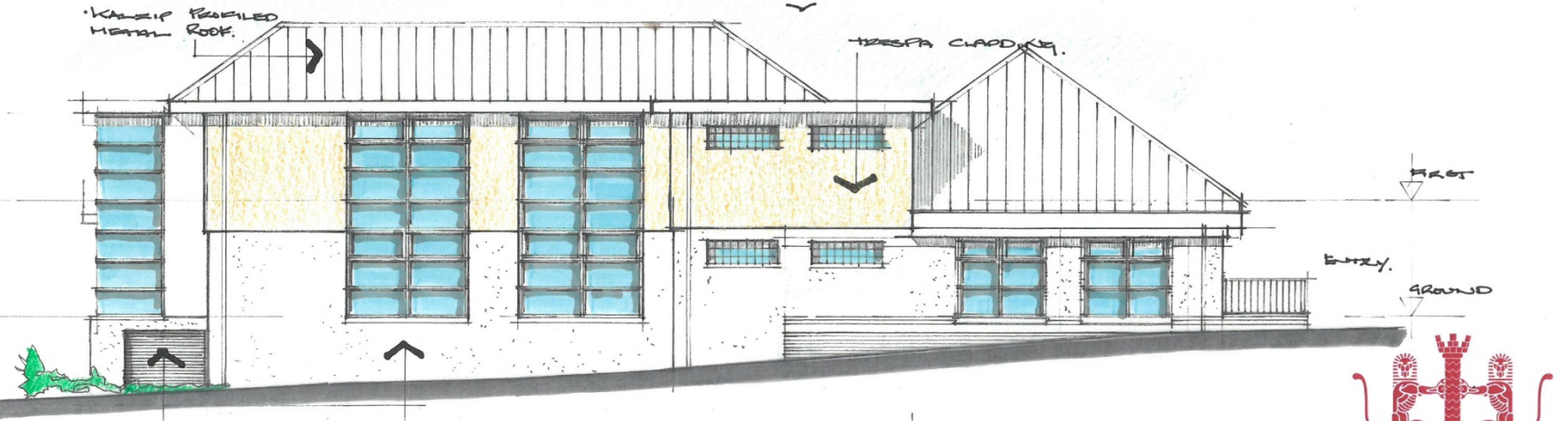
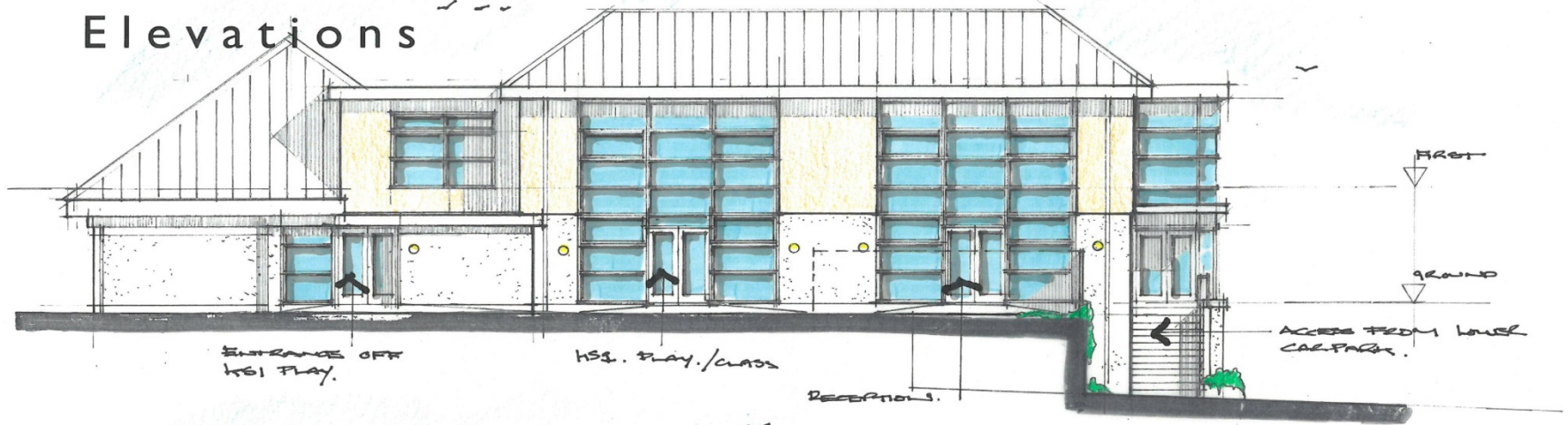
**FIRST FLOOR.**

SC1890. dk.  
APPROX. SCALE 1:100 @ A3.



# St Thomas's at Henry Bloom Noble Campus

## Elevations



SC1590 SK.  
APPROX. SCALE 1:100 @ A3.

