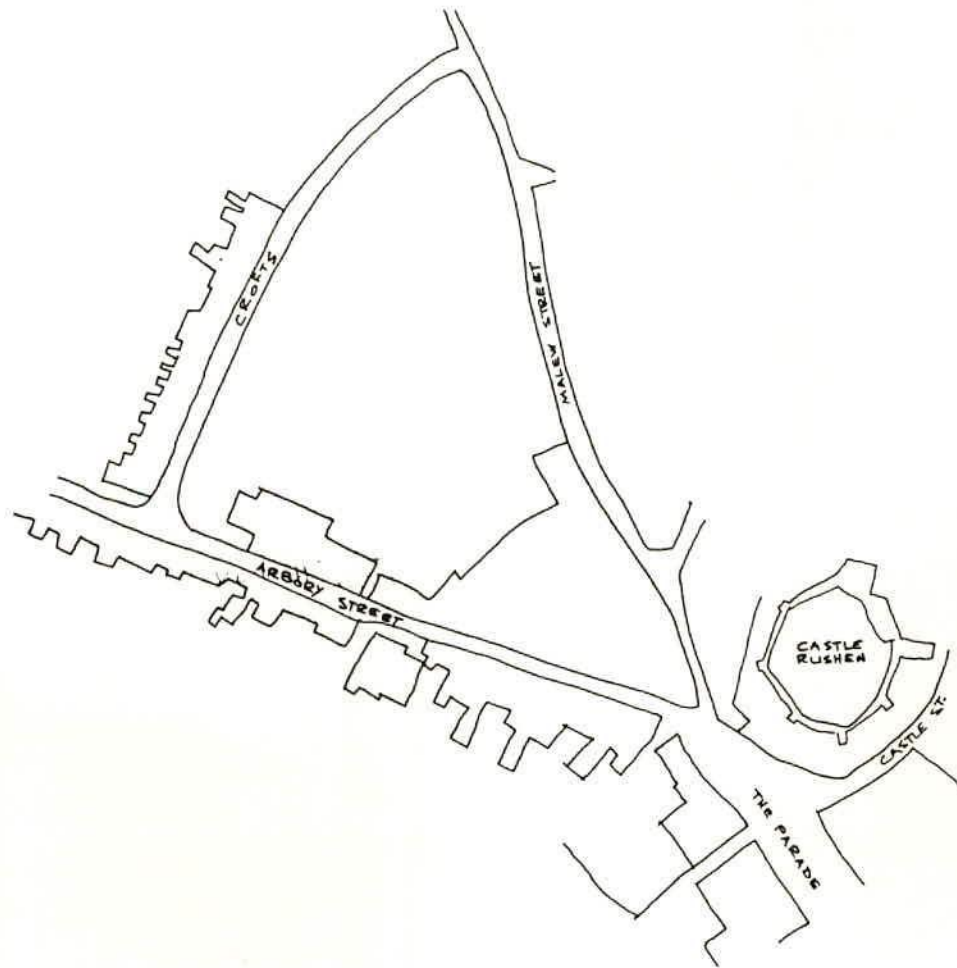
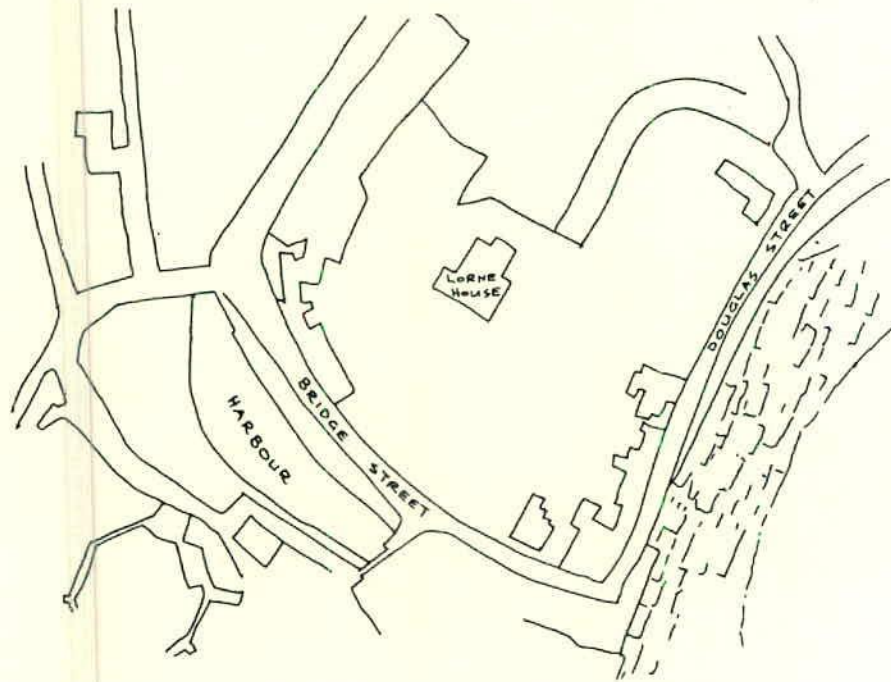


GREEN PENETRATION TO THE CENTRE could well be of interest to the town when seen in conjunction to walking. Presumably there are many wanderers who spend their days walking through the countryside and who would appreciate a green footway right into the heart of the town. Such a path could be found between Arbory and Malew Streets.



D2

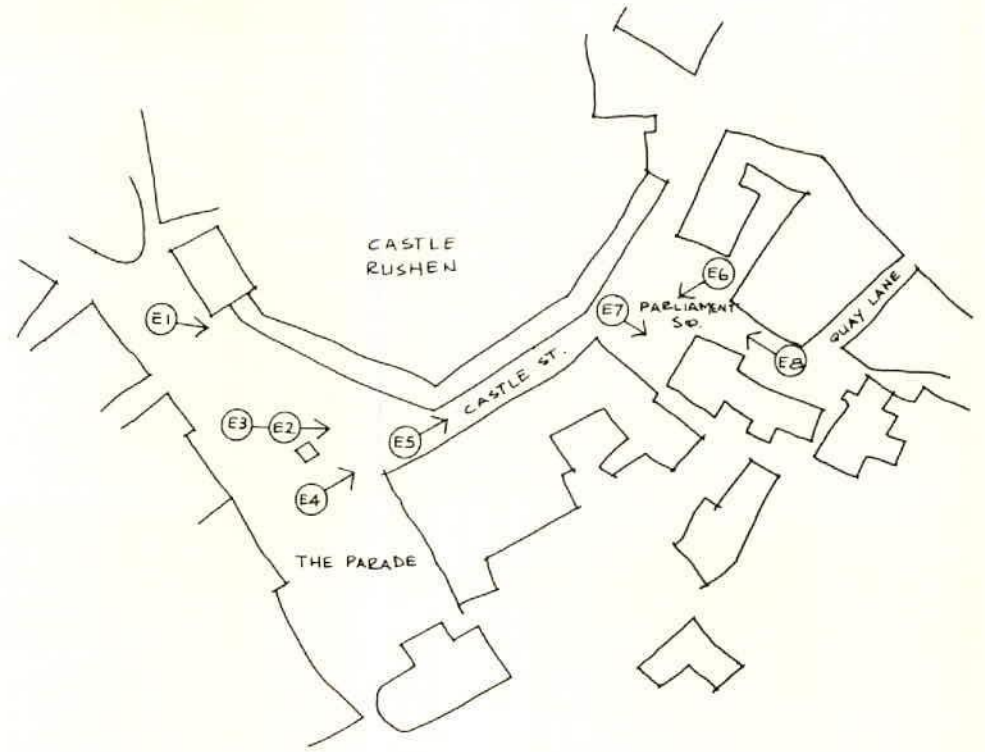
TO THE EAST OF THE HARBOUR there is a part of Castletown which requires no comment at this stage since it is already perfectly charming. The tall building has lost many slates and this should be put right before rot sets in.



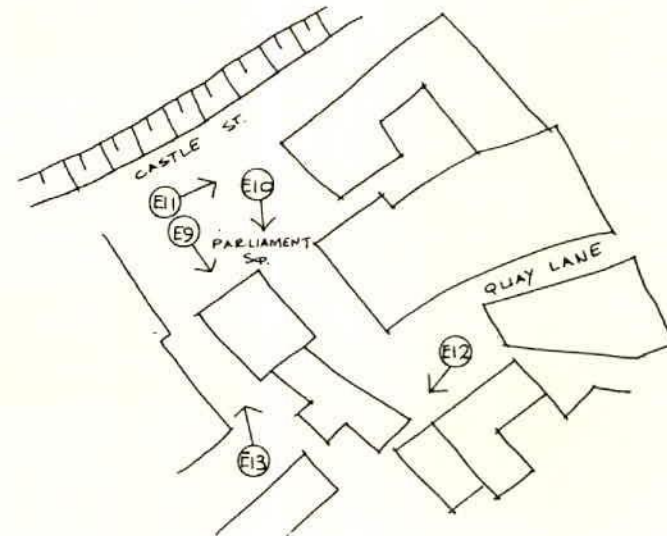
D3



THE PARADE OR TOWN SQUARE IS URBANE, two streets pour into it and the church windows let through the sea light beyond. Release to eternity. A glimpse of red and white pill-box lighthouse far out on the pier. The square is composed of town houses, shops, banks and hotels. The column confirms the stability of the square which is being questioned by the undertow of the Castle which does not belong to the square, it does not form a SIDE to the square but sucks the eye outwards. It is also questioned by the brooding presence of the ocean. A delicate balance which should never be resolved for this is its appeal.



E1



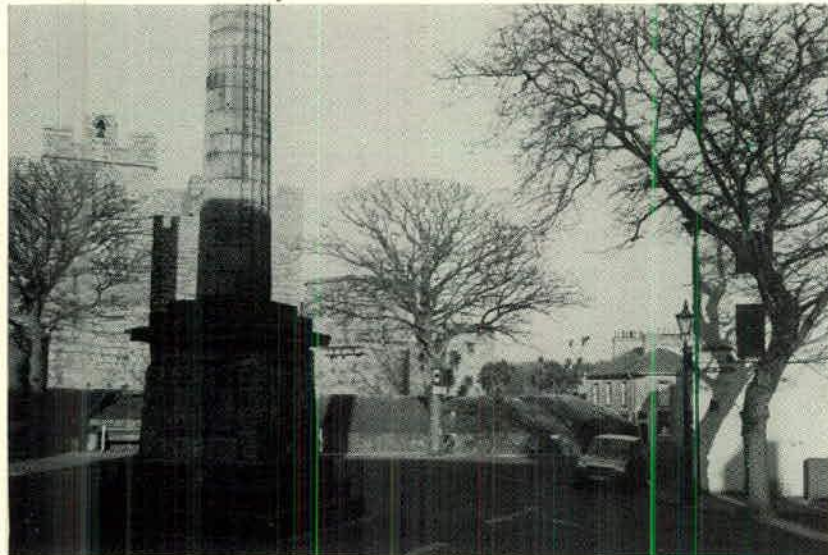




E2



E3



E4



E5





E6



E7

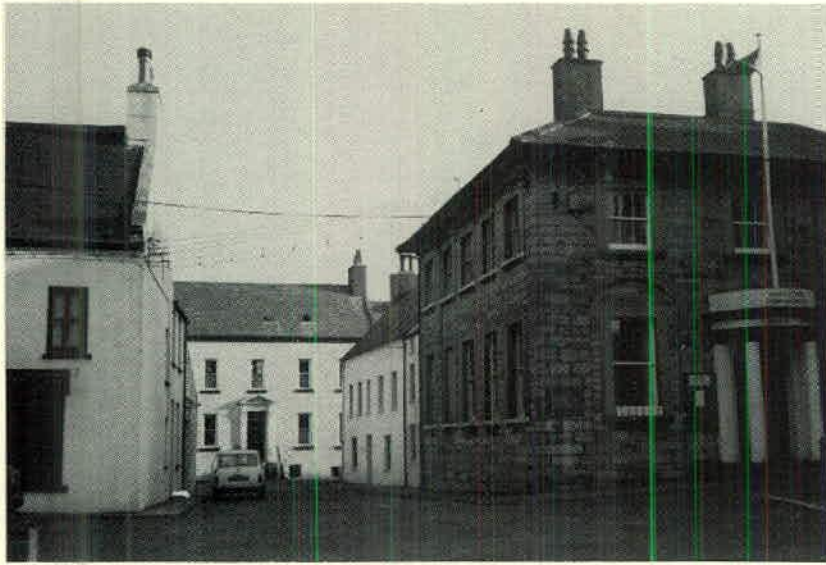


E8

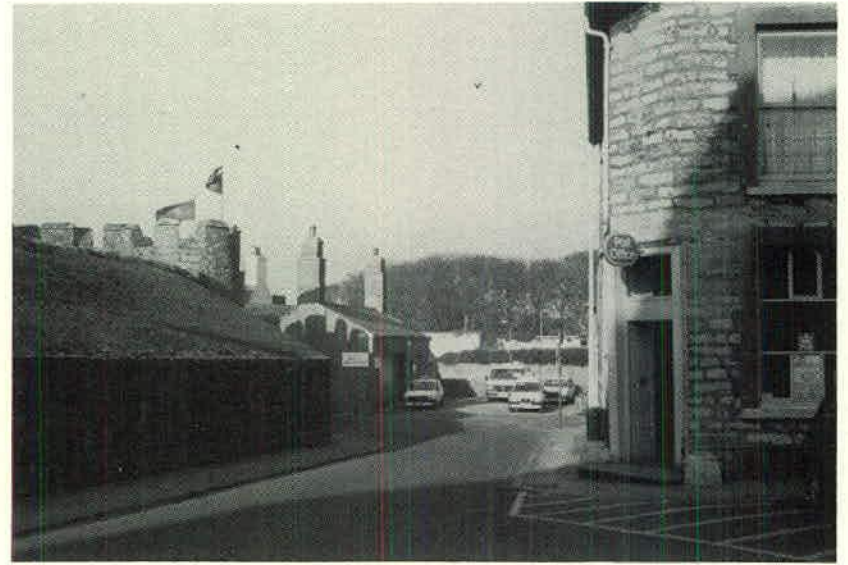


E9





E10



E11

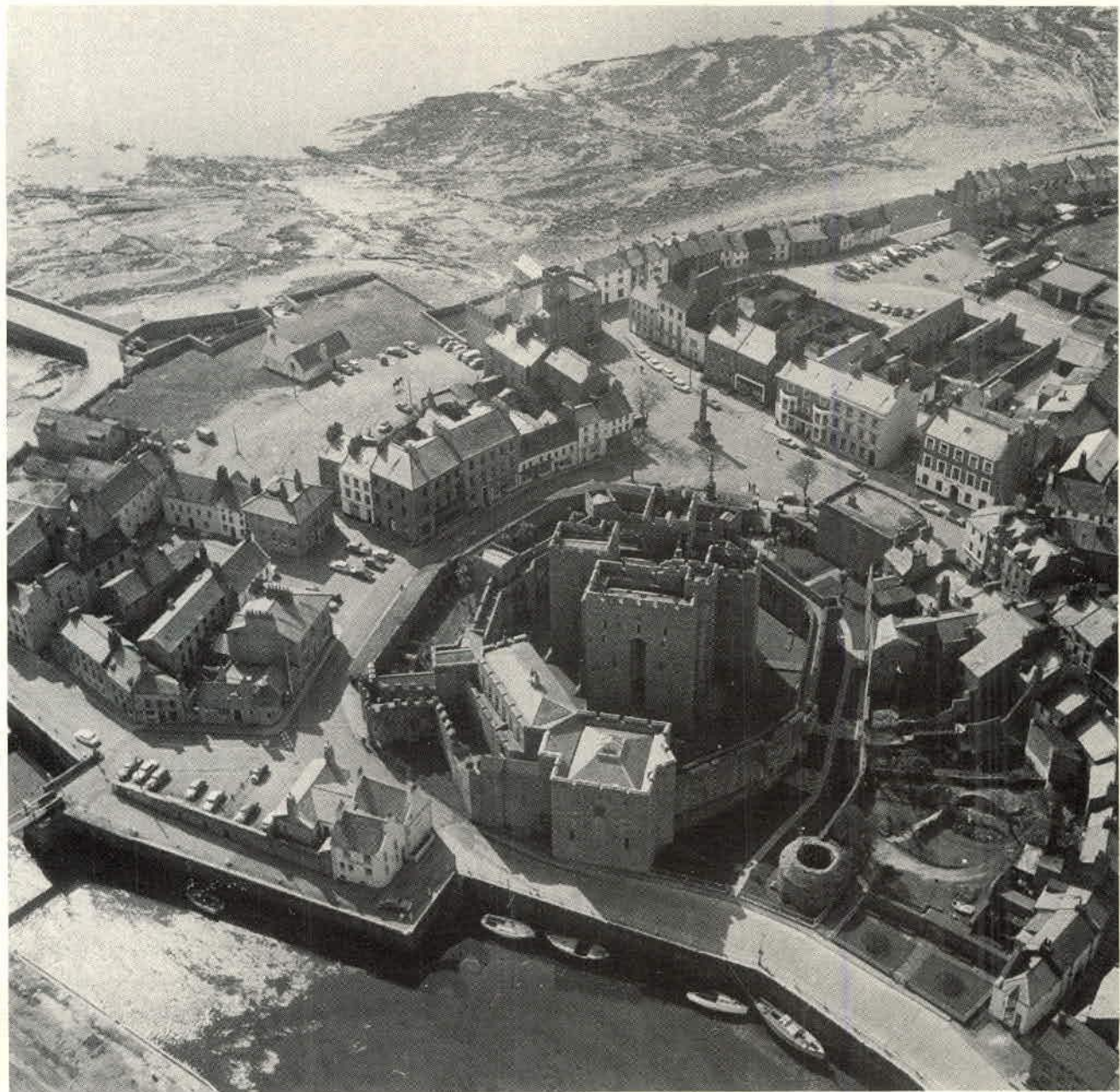


E12



E13





*Castle Rushen*



RUSHEN CASTLE ITSELF IS QUITE SMALL but it squats behind its curtain wall and grassy moat, which itself is hidden behind the glacis, rather cold and withdrawn. On the side of the quay the Castle makes contact directly with the road and from this aspect the grassy moat can be seen winding mysteriously out of sight. The road, Castle Hill, passes through the narrows between Castle and Castle Arms Hotel, and climbs in a right-handed turn to reveal in sequence: sky to left of Police Station, then the square system, Parliament Square etc., on the left, next a curved terrace of shops leading to the column in the square. On the right of the road is contained by the glacis retaining wall which is more or less horizontal whilst the road rises so that the height of the wall decreases from about ten feet to two by the time the square is reached. The basic relationship between the Castle and the Square is confused by the proliferation of casual monuments, gateways, seat and so on so that the real values are obscured.

TO THE WEST OF THE SQUARE A NEW ROAD, FARRANT'S WAY, runs from Arbory Street to Queen's Street but achieves little. Its danger lies in that it could encourage rash ideas on completing a ring road round the town.

